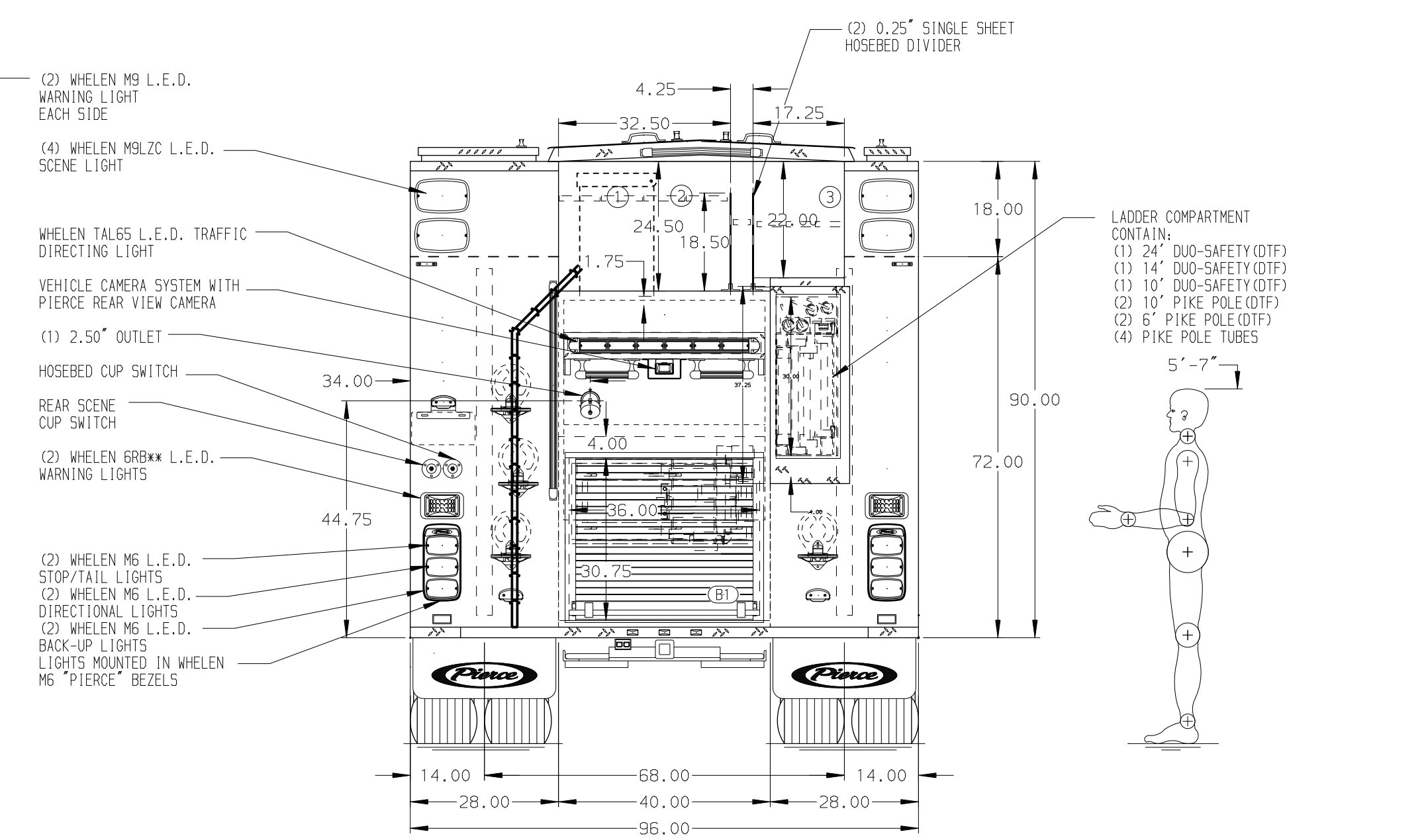
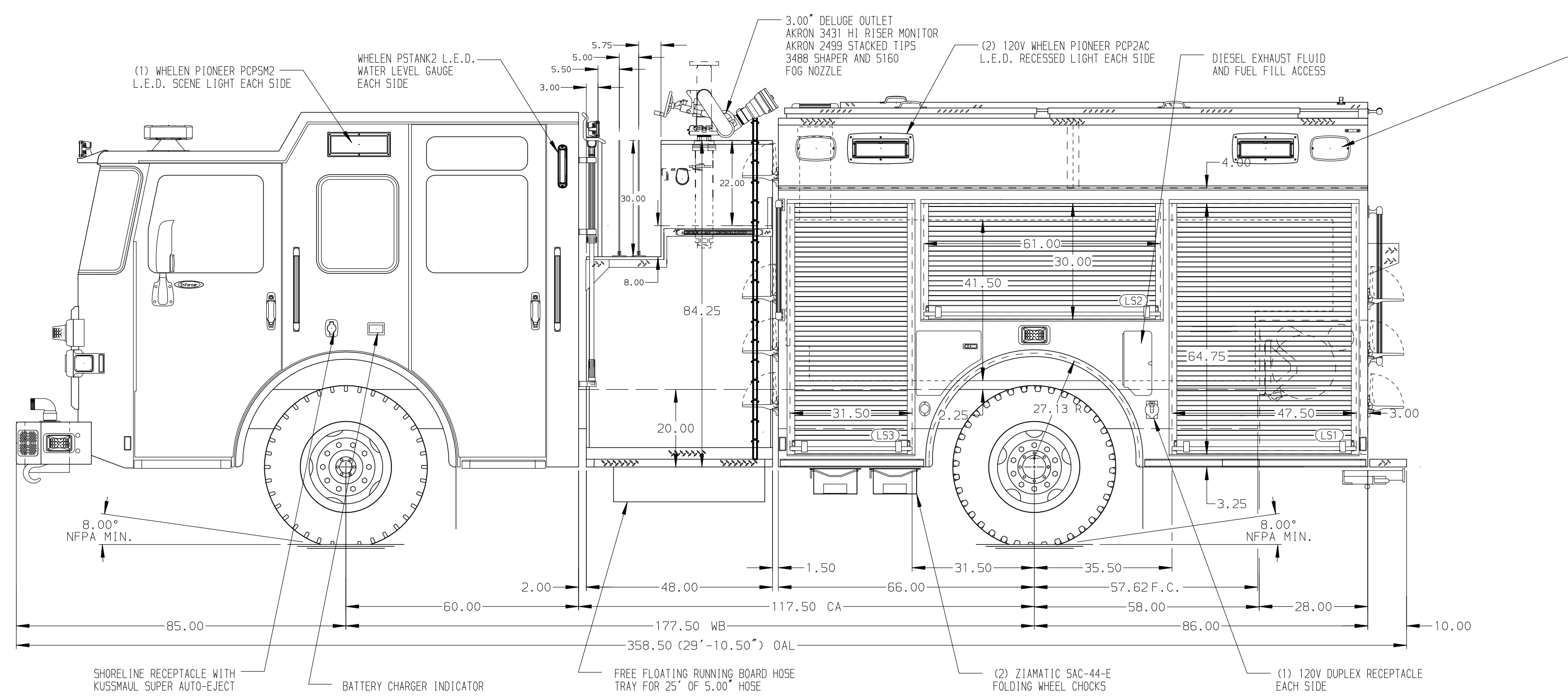


- HOSEBED CAPACITIES
- ① 1000' OF 5.00" SUPPLY HOSE
  - ② 200' OF 1.75" D.J. POLY HOSE
  - ③ 400' OF 3.00" D.J. POLY HOSE



**ALUMINUM BODY**

**NOTE**  
DIMENSIONS SHOWN ARE APPROXIMATE AND ARE SUBJECT TO MINOR DEVIATIONS AS MAY OCCUR OR BE NECESSARY IN CONSTRUCTION. MINOR DETAILS NOT SHOWN.

- 1. ONSPOT AUTOMATIC TIRE CHAINS TO BE PROVIDED AT REAR
- 2. BATTERY CHARGER LOCATED PER ORDER
- 3. DUAL L.E.D. LIGHT STRIPS LOCATED IN HOSE BED
- 4. SEVEN DRIP PAN GUARD FOR ROLL-UP DOOR LOCATED PER ORDER
- 5. FIVE FULL WIDTH/DEPTH ADJUSTABLE SHELF LOCATED PER ORDER
- 6. FOUR ADJUSTABLE SLIDE-OUT TRAY LOCATED PER ORDER
- 7. THREE FLOOR MOUNTED SLIDE-OUT TRAY LOCATED PER ORDER
- 8. SWING-OUT TOOL BOARD WITH PEGBOARD PATTERN LOCATED PER ORDER
- 9. ALUMINUM PEGBOARD ON BACK WALL LOCATED PER ORDER
- 10. CIRCUIT BREAKER PANEL LOCATED PER ORDER
- 11. ONE HANNAH ELECTRIC REWIND CORD REEL MODEL 1616-17-18 LOCATED PER ORDER
- 12. AIR INLET WITH DISCONNECT LOCATED PER ORDER

**CUSTOMER APPROVAL**  
APPROVED BY: \_\_\_\_\_  
DATE: \_\_\_\_\_



JOB NO.	37040
SCALE	1:24
DATE	
DRAWN BY	KE5
CHECKED BY	EGO
SHEET SIZE	SHEET NO.
D	1 OF 1

CHASSIS DATA	TITLE	2000-D-750 GAL POLY, 152" BODY
MAKE	FOR	LDRS. BTWN. TANK & SIDE SHEET, (3) X-LAYS, DELUGE
PIERCE		BRISTOL FIRE DEPARTMENT
MODEL		BRISTOL, TENNESSEE
ENFORCER	DWG NO.	37040AD