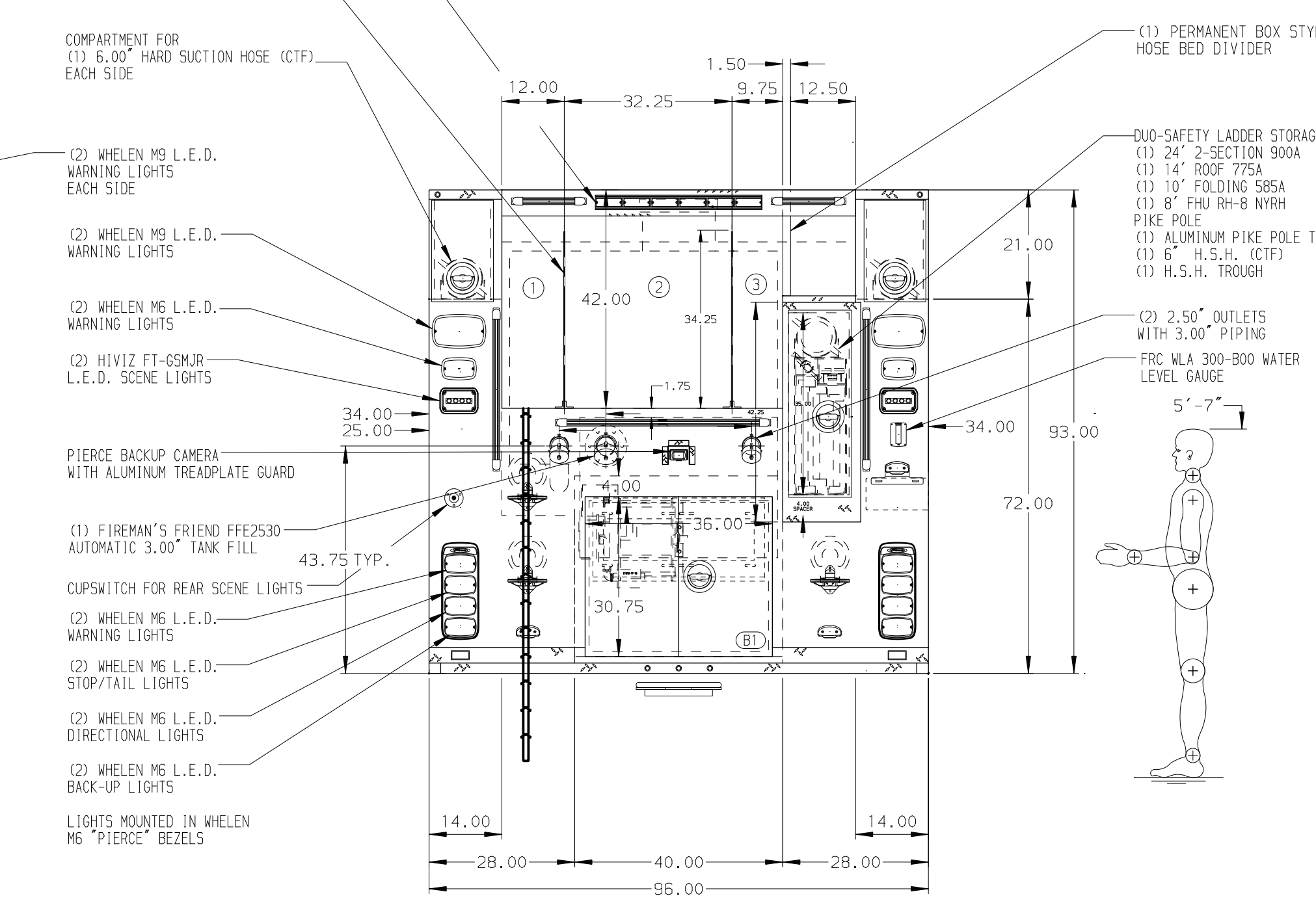
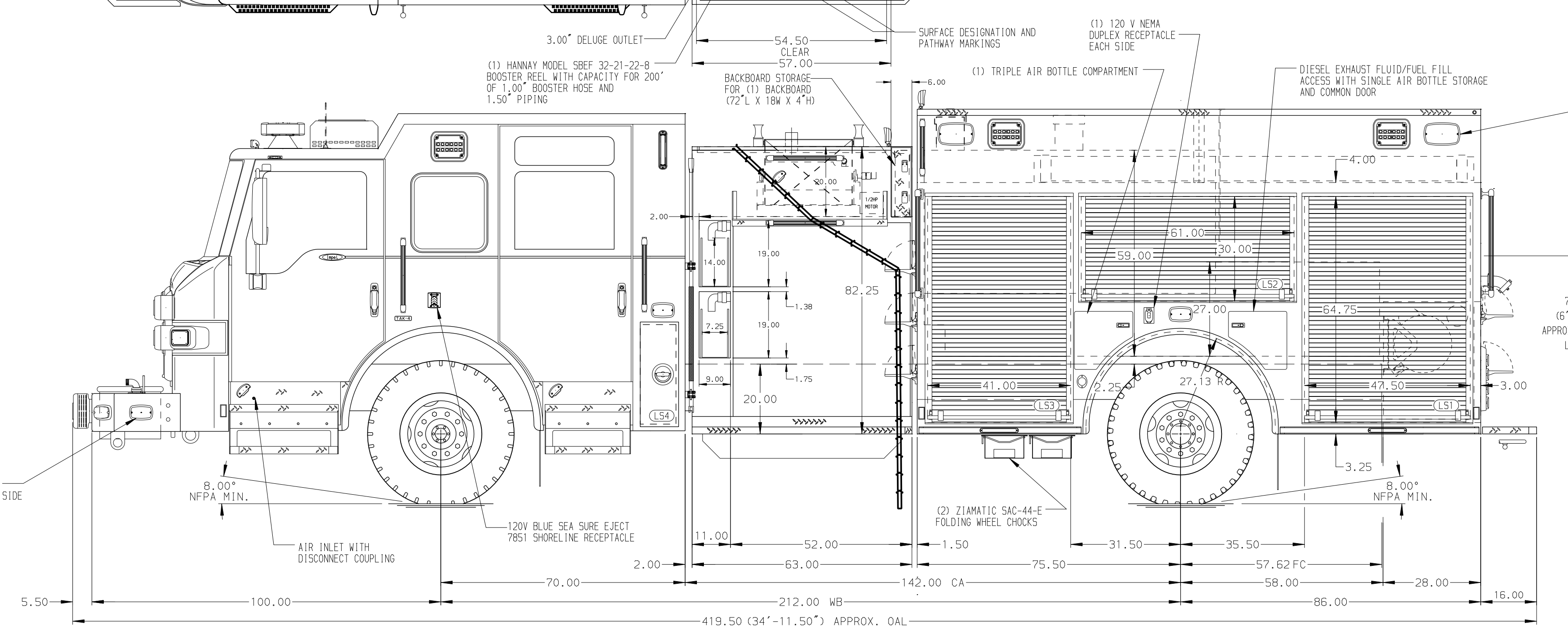


- HOSEBED CAPACITIES**
- ① 500' OF 3.00" D.J. POLY HOSE
 - ② 1000' OF 5.00" D.J. POLY HOSE
 - ③ 300' OF 2.50" D.J. POLY HOSE



ALUMINUM BODY SIDE ROLL AND FRONTAL IMPACT PROTECTION

NOTE
DIMENSIONS SHOWN ARE APPROXIMATE AND ARE SUBJECT TO MINOR DEVIATIONS AS MAY OCCUR OR BE NECESSARY IN CONSTRUCTION. MINOR DETAILS NOT SHOWN.

- 1. AUTOMATIC TIRE CHAINS TO BE PROVIDED AT REAR
- 2. L.E.D. LIGHT STRIP LOCATED ON THE FRONT OF THE HOSEBED
- 3. ONE 120V DUPLEX RECEPTACLE ON TOP OF THE EMS COMPARTMENT

CUSTOMER APPROVAL			
APPROVED BY:			
DATE:			
REV	DATE	BY	CH
			IMPEL FR

Pierce MANUFACTURING INC.		JOB NO.	37074
TITLE	1500-D-1020P, 1000 GAL. WATER W/20 GAL. FOAM CELL 161" PUMPER BODY, FH FDLR, 52" SIDE CONTROL, HUSKY 3	SCALE	1:24
MAKE	PIERCE	DATE	
FOR	WAKE COUNTY FIRE DEPARTMENT RALEIGH, NORTH CAROLINA	DRAWN BY	LST
DWG NO.	37074AD-SH1	CHECKED BY	SMA
		SHEET SIZE	D
		SHEET NO.	1 OF 2