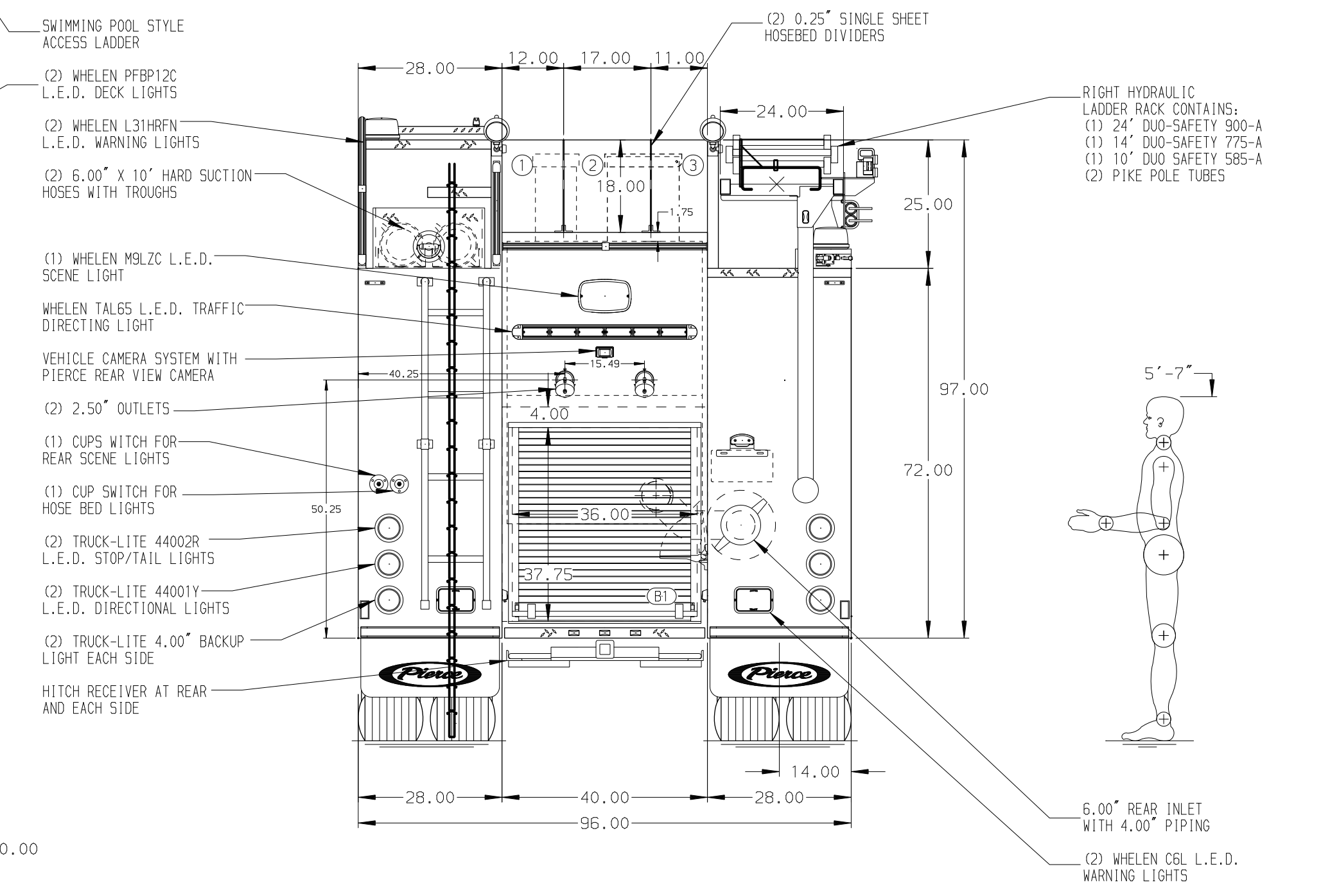
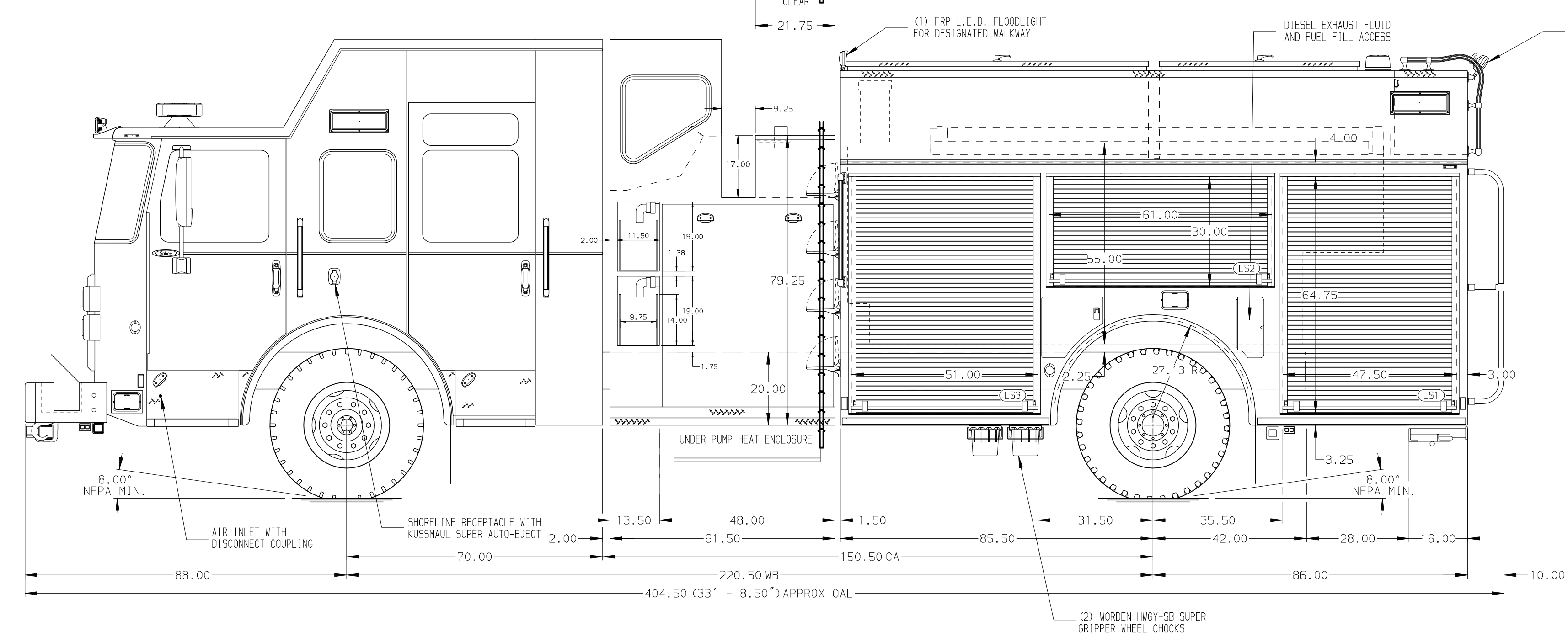


- HOSEBED CAPACITIES
- ① 300' OF 3.00" D.J. POLY HOSE
 - ② 500' OF 5.00" D.J. POLY HOSE
 - ③ 250' OF 2.50" D.J. POLY HOSE



ALUMINUM BODY

SIDE ROLL AND FRONTAL IMPACT PROTECTION

NOTE
DIMENSIONS SHOWN ARE APPROXIMATE AND ARE SUBJECT TO MINOR DEVIATIONS AS MAY OCCUR OR BE NECESSARY IN CONSTRUCTION. MINOR DETAILS NOT SHOWN.

CUSTOMER APPROVAL			
APPROVED BY:			
DATE:			
CHASSIS DATA	TITLE	1500-D-1020P, 1000 WATER, 20 FOAM, 171" PUMPER BODY	
MAKE	FOR	UNITED FIRE & RESCUE BALDWIN, WISCONSIN	
PIERCE	DWG NO.	37098AD	
MODEL	SABER FR		
REV	DATE	BY	CH
14JAN22	JUS	CZA	

Pierce MANUFACTURING INC.		JOB NO.	37098
SCALE	1:24	DATE	
DRAWN BY	JUS	DATE	07JAN22
CHECKED BY	CZA	DATE	07JAN21
SHEET SIZE	D	SHEET NO.	1 OF 1