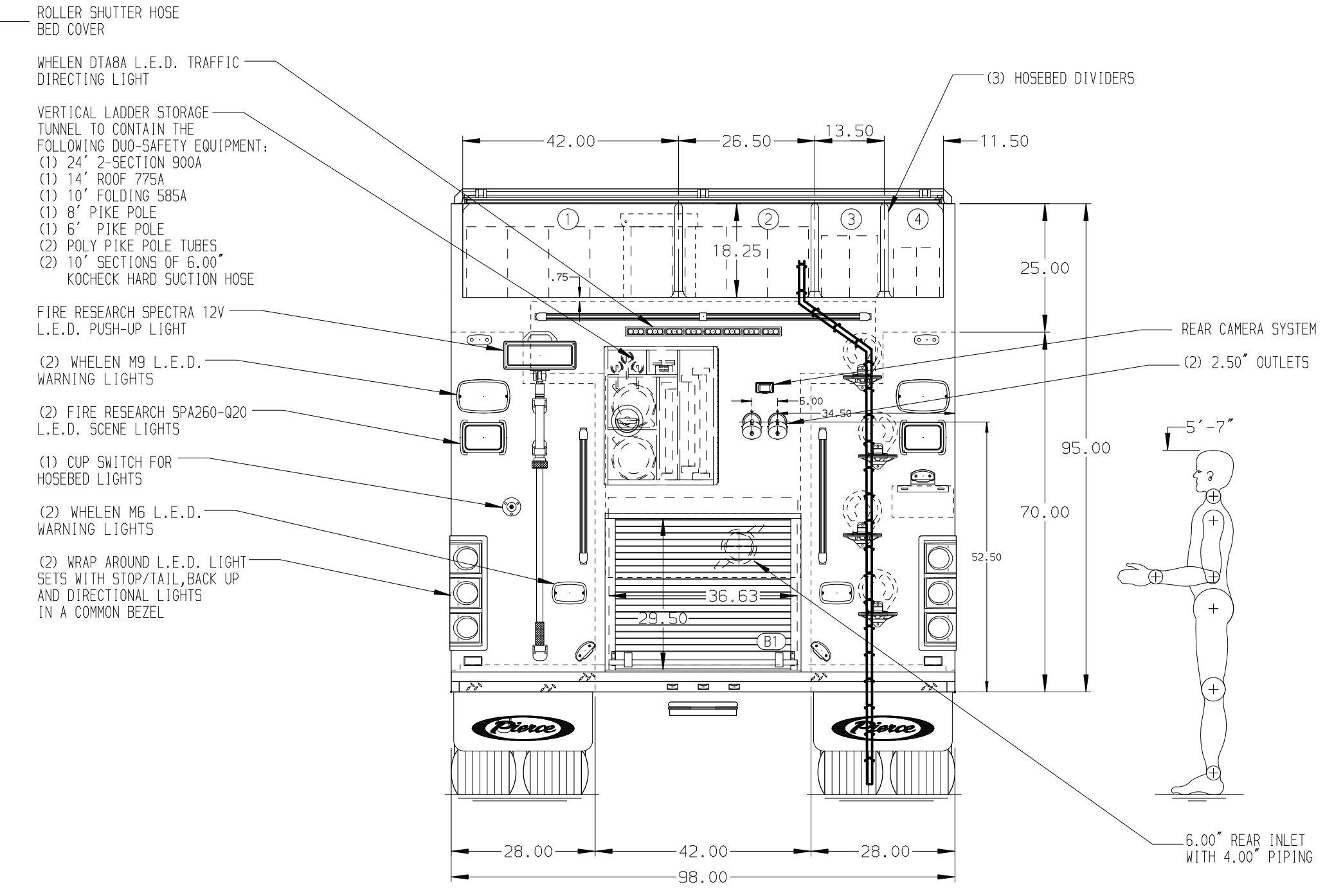
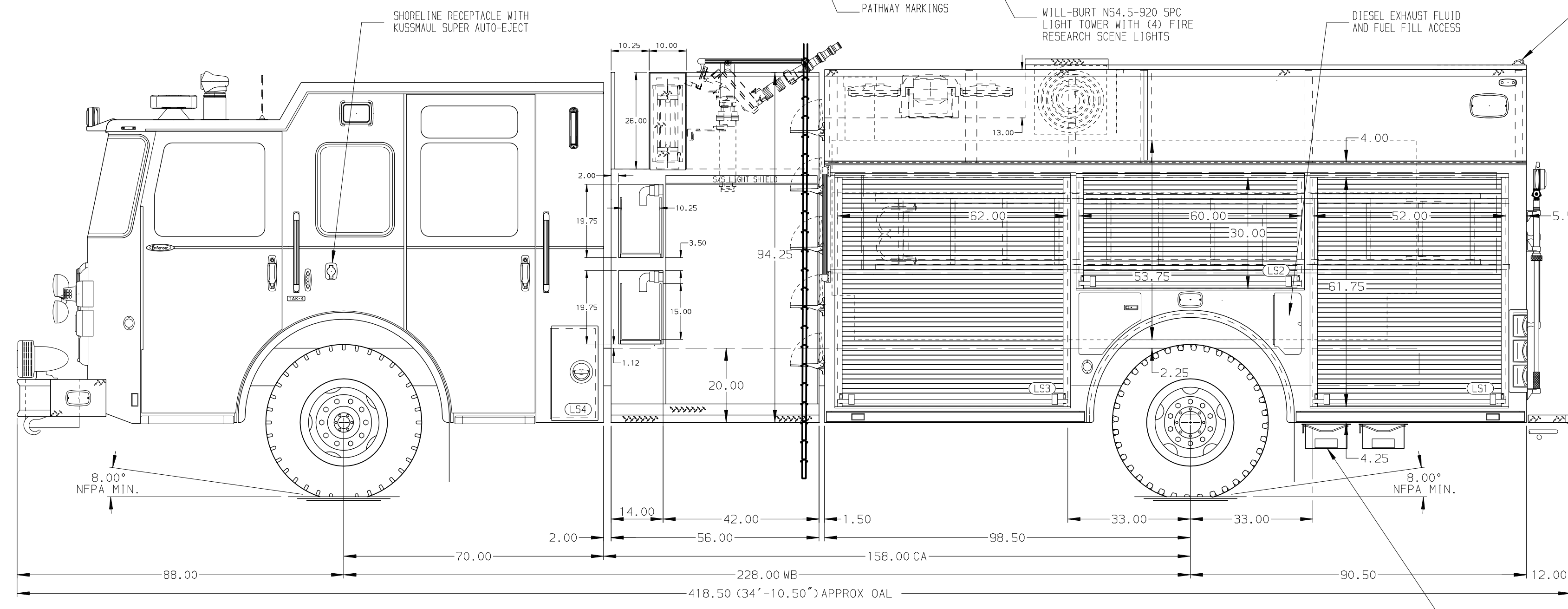


- HOSEBED CAPACITIES**
- ① 1200' OF 5.00\"/>



ALUMINUM BODY

NOTE
DIMENSIONS SHOWN ARE APPROXIMATE AND ARE SUBJECT TO MINOR DEVIATIONS AS MAY OCCUR OR BE NECESSARY IN CONSTRUCTION. MINOR DETAILS NOT SHOWN.

1. ONSPOT AUTOMATIC TIRE CHAINS TO BE PROVIDED AT REAR
2. BATTERY CHARGER LOCATED IN COMPARTMENT PER SHOP ORDER
3. BATTERY CHARGER INDICATOR LOCATED ON DRIVER'S SEAT RISER
4. WHELEN FOOCELZR L.E.D. LIGHT LOCATED AT THE FRONT OF THE HOSE BED
5. THREE FULL WIDTH/DEPTH ADJUSTABLE SHELVES IN COMPARTMENTS PER SHOP ORDER
6. ONE FLOOR MOUNTED SLIDE-OUT TRAY IN COMPARTMENT 2
7. SLIDE-OUT TOOL BOARD WITH PEGBOARD PATTERN IN COMPARTMENT 2
8. ONE SWING-OUT ALUMINUM TOOL BOARD IN COMPARTMENT 2
9. AIR INLET WITH KUSSMAUL AIR-EJECT IN DRIVER SIDE STEP WELL

REV	DATE	BY	CH	ENFORCER

		JOB NO.	37099
		SCALE	DATE
CHASSIS DATA MAKE PIERCE MODEL ENFORCER	TITLE	1500-D-1000 GALLON WATER TANK, 189\"/>	
	FOR	PALMYRA FIRE PROTECTION DISTRICT PALMYRA, MISSOURI	
DWG NO.	37099AD-SH1		SHEET NO.
	D		1 OF 2