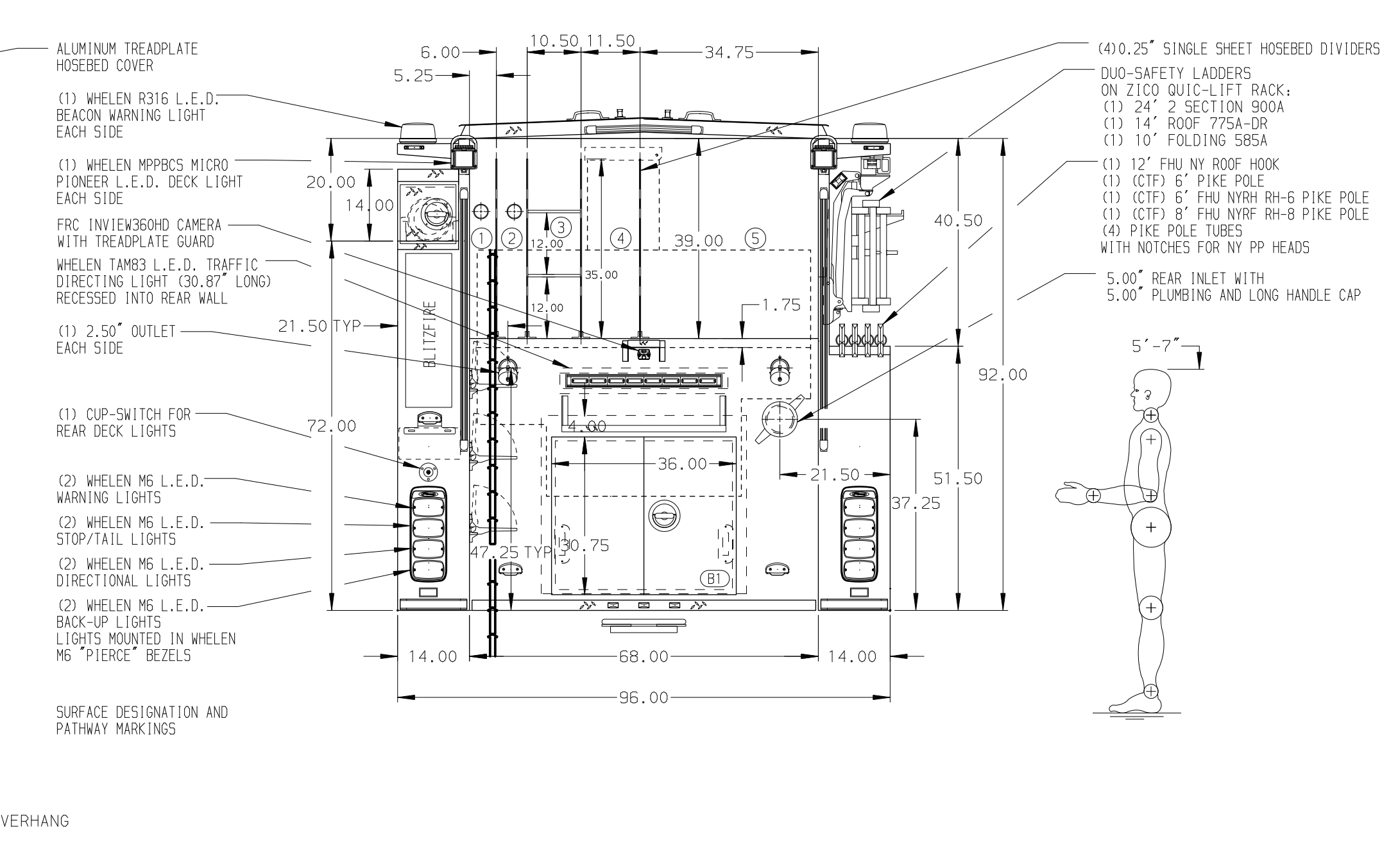
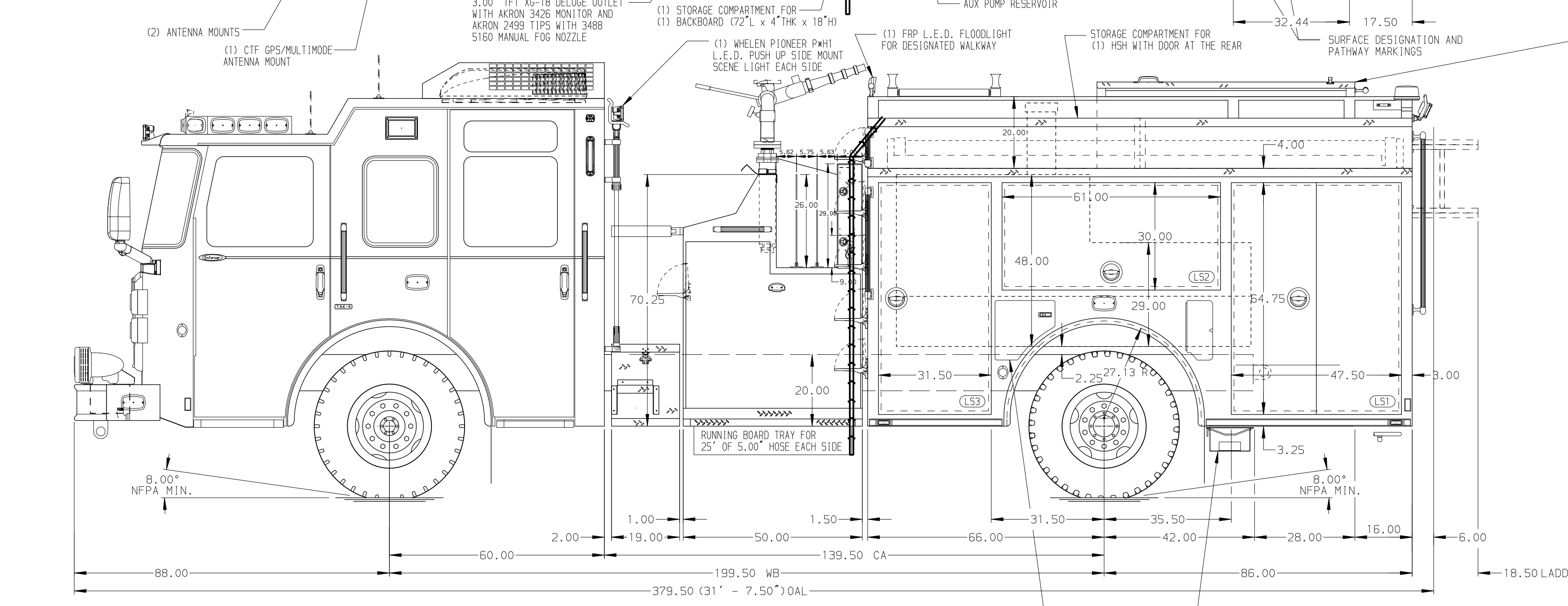


- HOSEBED CAPACITIES**
- ① 200' OF 2.50" HOSE
 - ② 200' OF 2.50" HOSE
 - ③ HIGH RISE STORAGE/PERMANENT TRAY
 - ④ 500' OF 3.00" HOSE
 - ⑤ 1000' OF 5.00" HOSE



ALUMINUM BODY

MAXIMUM O.A.L. 379.50"

MAXIMUM O.A.H. 122.00"

NOTE
DIMENSIONS SHOWN ARE APPROXIMATE AND ARE SUBJECT TO MINOR DEVIATIONS AS MAY OCCUR OR BE NECESSARY IN CONSTRUCTION. MINOR DETAILS NOT SHOWN.

1. INSTA-CHAIN AUTOMATIC TIRE CHAINS
2. AIR INLET WITH DISCONNECT COUPLING LOCATED IN DRIVER'S SIDE STEP WELL
3. BATTERY CHARGER LOCATED BEHIND DRIVER'S SEAT
4. BATTERY CHARGE INDICATOR LOCATED ON DRIVER'S SEAT RISER
5. REVERSE HINGED COMPARTMENT DOOR ON COMPARTMENT L53
6. FIVE FULL WIDTH/DEPTH ADJUSTABLE SHELVES LOCATED PER ORDER
7. ONE ADJUSTABLE SLIDE-OUT TRAY LOCATED PER ORDER
8. ONE FLOOR MOUNTED SLIDE-OUT TRAY LOCATED PER ORDER
9. ONE ALUMINUM SLIDE-OUT TOOLBOARD WITH PEGBOARD LOCATED PER ORDER
10. ONE ALUMINUM SWING-OUT TOOLBOARD WITH PEGBOARD LOCATED PER ORDER
11. ALUMINUM PEGBOARD WITH TRACK ON BACK WALL LOCATED PER ORDER
12. ZICO AIR BOTTLE HOLDER FOR (2) BOTTLES MOUNTED WITH TRACKS LOCATED PER ORDER

CUSTOMER APPROVAL			
APPROVED BY:			
DATE:			
CHASSIS DATA	TITLE	1500-D-750G WATER, 152" PUMPER BODY, (3) CROSSLAYS DELUGE, BOOSTER REEL, LADDERS ON ZICO LADDER RACK	
MAKE	FOR	EDMOND, OK EDMOND, OKLAHOMA	
PIERCE			
MODEL	DWG NO.	37102AD	
ENFORCER			

Pierce MANUFACTURING INC.		JOB NO.	37102
		SCALE	1:24
		DATE	
		DRAWN BY	LME
		CHECKED BY	CZA
		SHEET SIZE	D
		SHEET NO.	1 OF 1