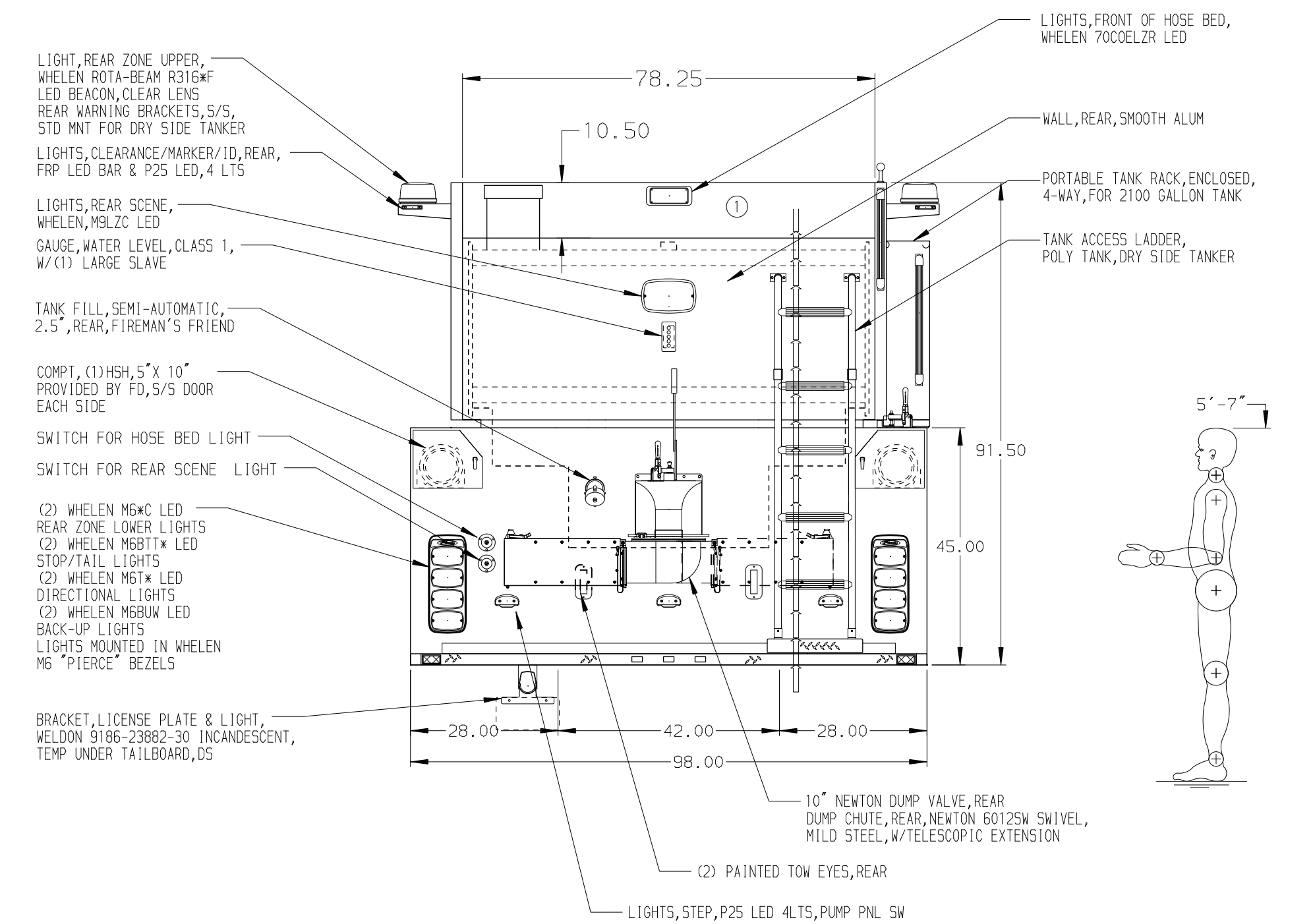


HOSEBED CAPACITIES
 ① 200' OF 2.50" D.J. POLY HOSE



ALUMINUM BODY

NOTE
 DIMENSIONS SHOWN ARE APPROXIMATE AND ARE SUBJECT TO MINOR DEVIATIONS AS MAY OCCUR OR BE NECESSARY IN CONSTRUCTION. MINOR DETAILS NOT SHOWN.

REV	DATE	BY	CH	T480
1	14NOV22	RHU	NAS	MAKE
2	10AUG22	JLA	NAS	KW
3	16MAY22	JLA	RWI	MODEL

		JOB NO.	37122
		SCALE	DATE
CHASSIS DATA TITLE FOR DWG NO.	500-D-2000 POLY, 148" DRYSIDE BODY W/REAR DUMPS	DRAWN BY	JLA
	34" SIDE CONTROL, (1) 1.5" CROSSLAY	CHECKED BY	RWI
	BEMIDJI FIRE DEPARTMENT	SHEET SIZE	D
	BEMIDJI MINNESOTA	SHEET NO.	1 OF 1
		37122AD	