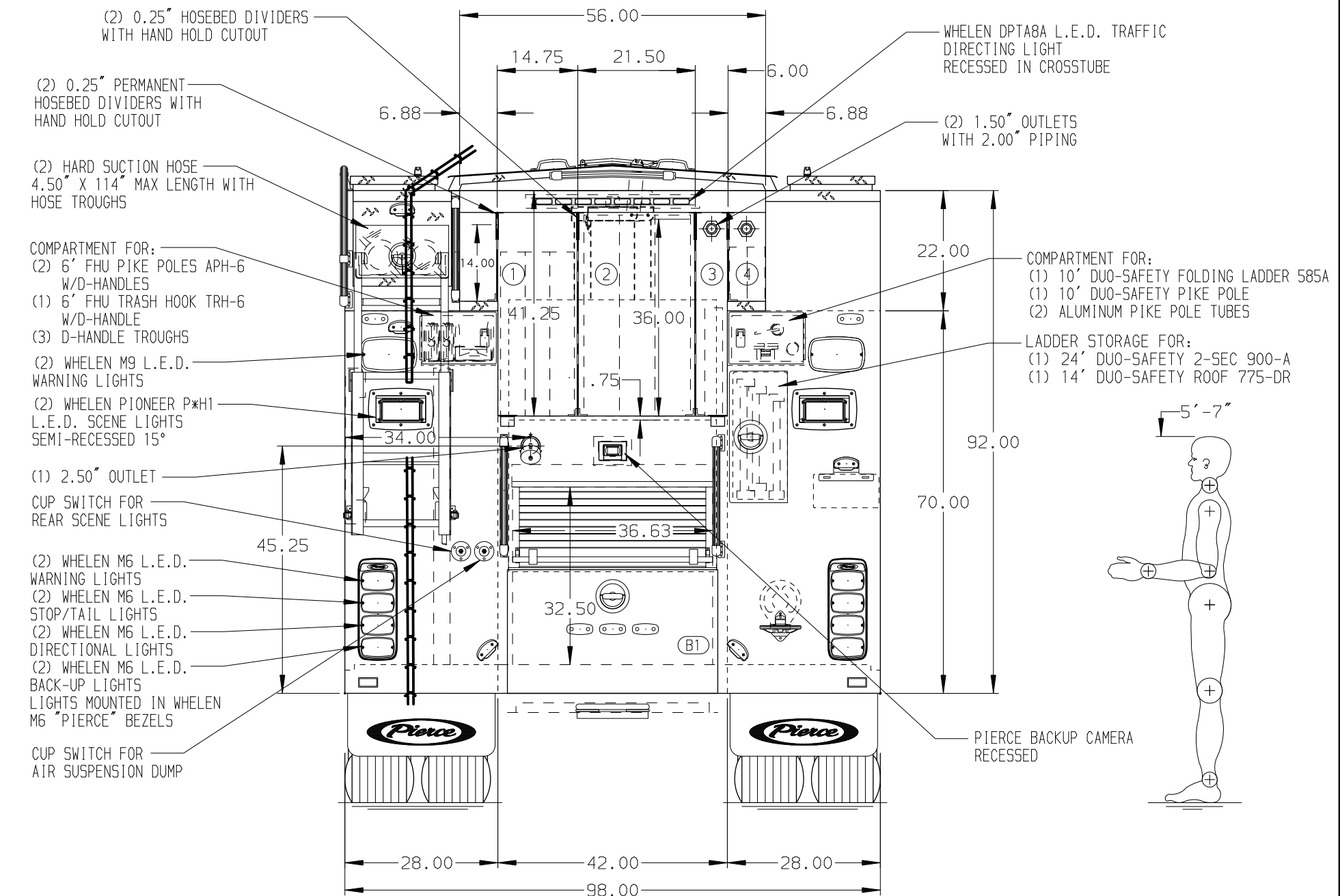


- HOSEBED CAPACITIES**
- ① - 800' OF 2.50" DJP HOSE
 - ② - 1000' OF 4.00" DJP HOSE
 - ③ - 200' OF 1.75" DJP HOSE
 - ④ - 200' OF 1.75" DJP HOSE



ALUMINUM BODY

NOTE
DIMENSIONS SHOWN ARE APPROXIMATE AND ARE SUBJECT TO MINOR DEVIATIONS AS MAY OCCUR OR BE NECESSARY IN CONSTRUCTION. MINOR DETAILS NOT SHOWN.

- 1. AIR INLET/OUTLET WITH DISCONNECT FITTING LOCATED AT DRIVER'S SIDE PUMP PANEL
- 2. CAB ROOF DRIP RAILS
- 3. L.E.D. LIGHTS BELOW HOSE BED COVER
- 4. PULL STRAP ON LIFTUP DOORS PER ORDER
- 5. BRUSHED STAINLESS STEEL SOUFFLATE ON BOTTOM OF DOOR FRAME PER ORDER
- 6. BRUSHED STAINLESS STEEL SCUFFPLATE INSIDE BODY COMPARTMENT DOOR PER ORDER
- 7. DUAL L.E.D. LIGHT STRIP IN BODY COMPARTMENTS PER ORDER
- 8. DUAL L.E.D. LIGHT STRIP IN HATCH COMPARTMENTS PER ORDER
- 9. NINE FULL WIDTH/DEPTH ADJUSTABLE SHELVES PER ORDER
- 10. THREE ADJUSTABLE SLIDE-OUT TRAYS PER ORDER
- 11. THREE FLOOR MOUNTED SLIDE-OUT TRAY WITH 2.00" SIDES PER ORDER
- 12. ONE SWING-OUT ALUMINUM TOOLBOARD PER ORDER
- 13. TRANSVERSE PARTITIONS IN REAR COMPARTMENT
- 14. SPECIAL SIZE POLY TRAYS IN LOWER CROSSLAY
- 15. FIVE ALUMINUM TOOLBOARDS BACK WALL MOUNTED PER ORDER
- 16. OIL DRY HOPPER IN HATCH COMPARTMENT RH1
- 17. LITTLE GIANT LADDER MODEL 13 SHOWN IN RS3
- 18. DARLEY 2.5AGH AUXILIARY PUMP
- 19. L.E.D. LIGHTS IN CROSSLAY COMPARTMENT PER ORDER
- 20. INVERTER/BATTERY CHARGER LOCATED ???
- 21. CIRCUIT BREAKER PANEL LOCATED ???
- 22. TWO INTERIOR BODY 15/20A 120V RECEPTABLES PER ORDER
- 23. ONE CAB INTERIOR 15/20A 120V RECEPTABLE PER ORDER

CUSTOMER APPROVAL			
APPROVED BY:			
DATE:			
REV	DATE	BY	CH

		JOB NO.	37157 (01 & 02)
		SCALE	DATE
TITLE	1500-D-520P, 500G WATER W/20G FOAM, 177" BODY, 67LHB LADDERS IN BODY, DELUGE, HUSKY 3, (2) AUX PUMP REELS	DRAWN BY	10MAR22
FOR	PATTERSON FIRE DEPARTMENT PATTERSON, CALIFORNIA	CHECKED BY	10MAR22
DWG NO.	37157AD	SHEET SIZE	SHEET NO.
		D	1 OF 1