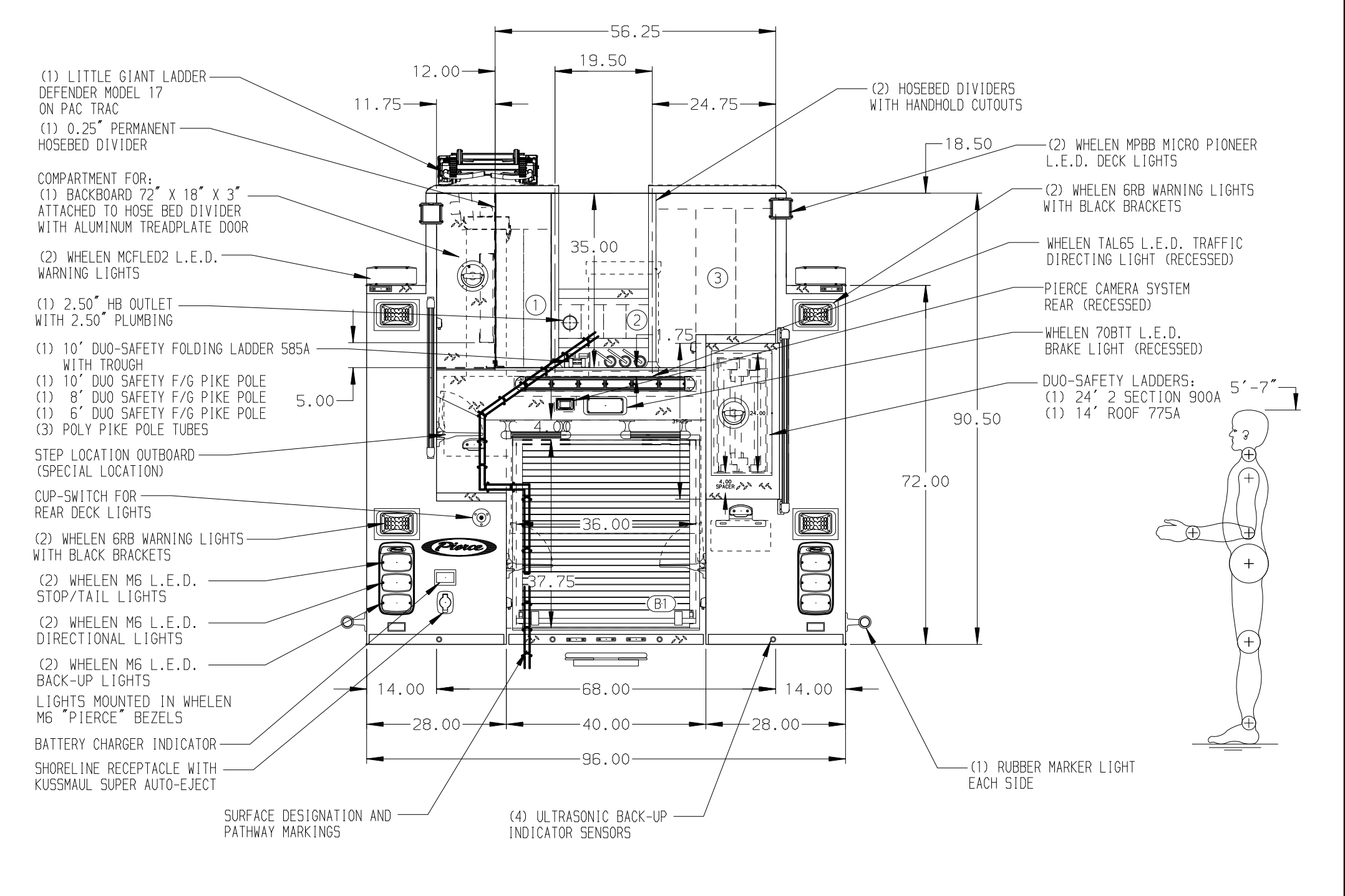


- HOSEBED CAPACITIES
- ① 650' OF 3.00" D.J. POLY HOSE
 - ② 300' OF 2.50" D.J. POLY HOSE
 - ③ 1000' OF 5.00" D.J. POLY HOSE



ALUMINUM BODY

NOTE
 DIMENSIONS SHOWN ARE APPROXIMATE AND ARE SUBJECT TO MINOR DEVIATIONS AS MAY OCCUR OR BE NECESSARY IN CONSTRUCTION. MINOR DETAILS NOT SHOWN.

- 1. PAC TRAC IN CAB PER SHOP ORDER
- 2. BATTERY CHARGER LOCATED BEHIND DRIVER'S SEAT ON TOP OF EMS COMPARTMENT
- 3. DUAL L.E.D. LIGHT STRIPS LOCATED BELOW HOSE BED COVER
- 4. L.E.D. LIGHT STRIP LOCATED BELOW HOSE BED COVER ON WALKWAY
- 5. L.E.D. LIGHT STRIP LOCATED IN CARGO AREA

CUSTOMER APPROVAL			
APPROVED BY:			
DATE:			
REV	DATE	BY	CH

Pierce MANUFACTURING INC.		JOB NO.	37160 01-04
		SCALE	1:24
		DATE	
CHASSIS DATA	TITLE	DRAWN BY	09MAR22
MAKE	FOR	CHECKED BY	10MAR22
PIERCE	TULSA FIRE DEPARTMENT	SHEET SIZE	SHEET NO.
MODEL	TULSA, OKLAHOMA	D	1 OF 2
VELOCITY	DWG NO.	37160AD-SH1	