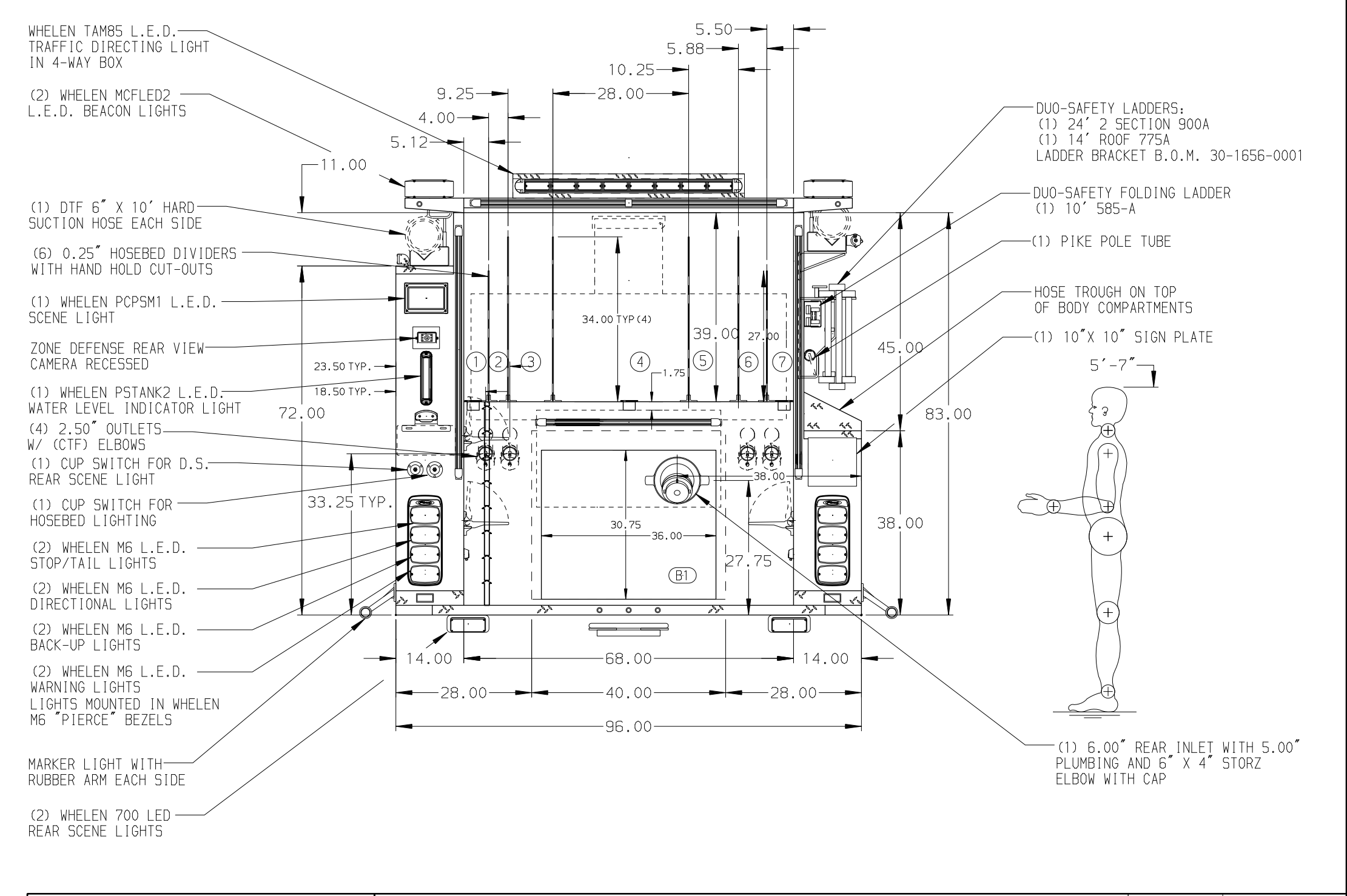
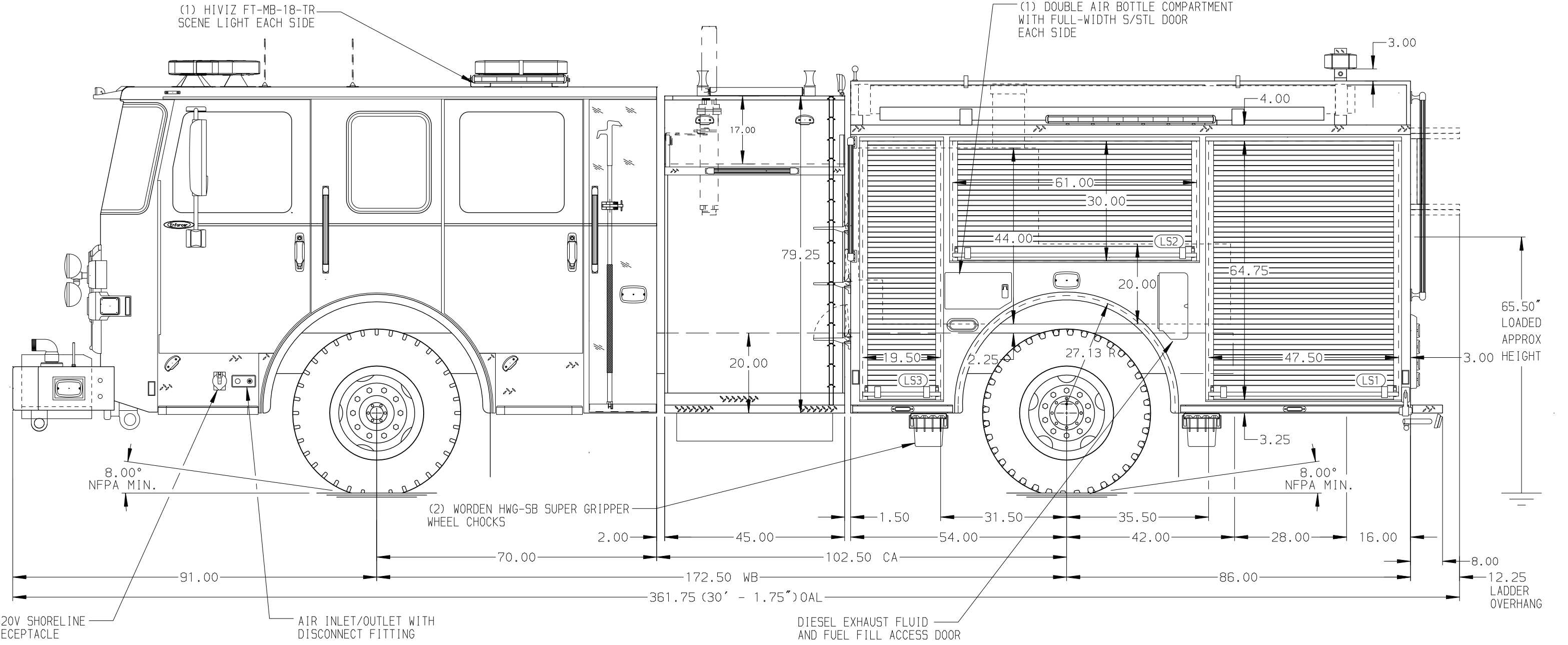


- HOSEBED CAPACITIES
- ① 200' OF 2.50" D.J. POLY HOSE
 - ② 200' OF 1.75" D.J. POLY HOSE
 - ③ 500' OF 2.50" D.J. POLY HOSE
 - ④ 1000' OF 4.00" D.J. POLY HOSE
 - ⑤ 500' OF 2.50" D.J. POLY HOSE
 - ⑥ 200' OF 1.75" D.J. POLY HOSE
 - ⑦ 200' OF 1.75" D.J. POLY HOSE



ALUMINUM BODY

SIDE ROLL & FRONTAL IMPACT PROTECTION

NOTE
DIMENSIONS SHOWN ARE APPROXIMATE AND ARE SUBJECT TO MINOR DEVIATIONS AS MAY OCCUR OR BE NECESSARY IN CONSTRUCTION. MINOR DETAILS NOT SHOWN.

- 1. ONSPOT AUTOMATIC TIRE CHAINS TO BE PROVIDED AT THE REAR
- 2. BATTERY CHARGER ON THE BACK WALL OF RIGHT SIDE EMS COMPARTMENT
- 3. BATTERY CHARGER INDICATOR ON THE DRIVER'S SEAT RISER
- 4. 120V NEMA DUPLEX RECEPTACLE IN THE RIGHT SIDE EMS COMPARTMENT
- 5. ON SCENE SOLUTION L.E.D. STRIP LIGHTS LOCATED AT THE FRONT OF THE HOSEBED

CUSTOMER APPROVAL			
APPROVED BY:			
DATE:			
CHASSIS DATA	TITLE	1500-D-500P 140" FH F&R DS, LOW SIDE PS	
MAKE	FOR	(2) HSH, DELUGE, REAR INLET, LADDERS ON PS SIDE SHEET	
PIERCE		CITY OF RICHMOND, VIRGINIA	
MODEL	DWG NO.	37162AD-SH1	
ENFORCER			

Pierce MANUFACTURING INC.		JOB NO.	37162 (01-02)
SCALE	1:24	DATE	
DRAWN BY	LST	DATE	23FEB22
CHECKED BY	JBL	DATE	25FEB22
SHEET SIZE	D	SHEET NO.	1 OF 2