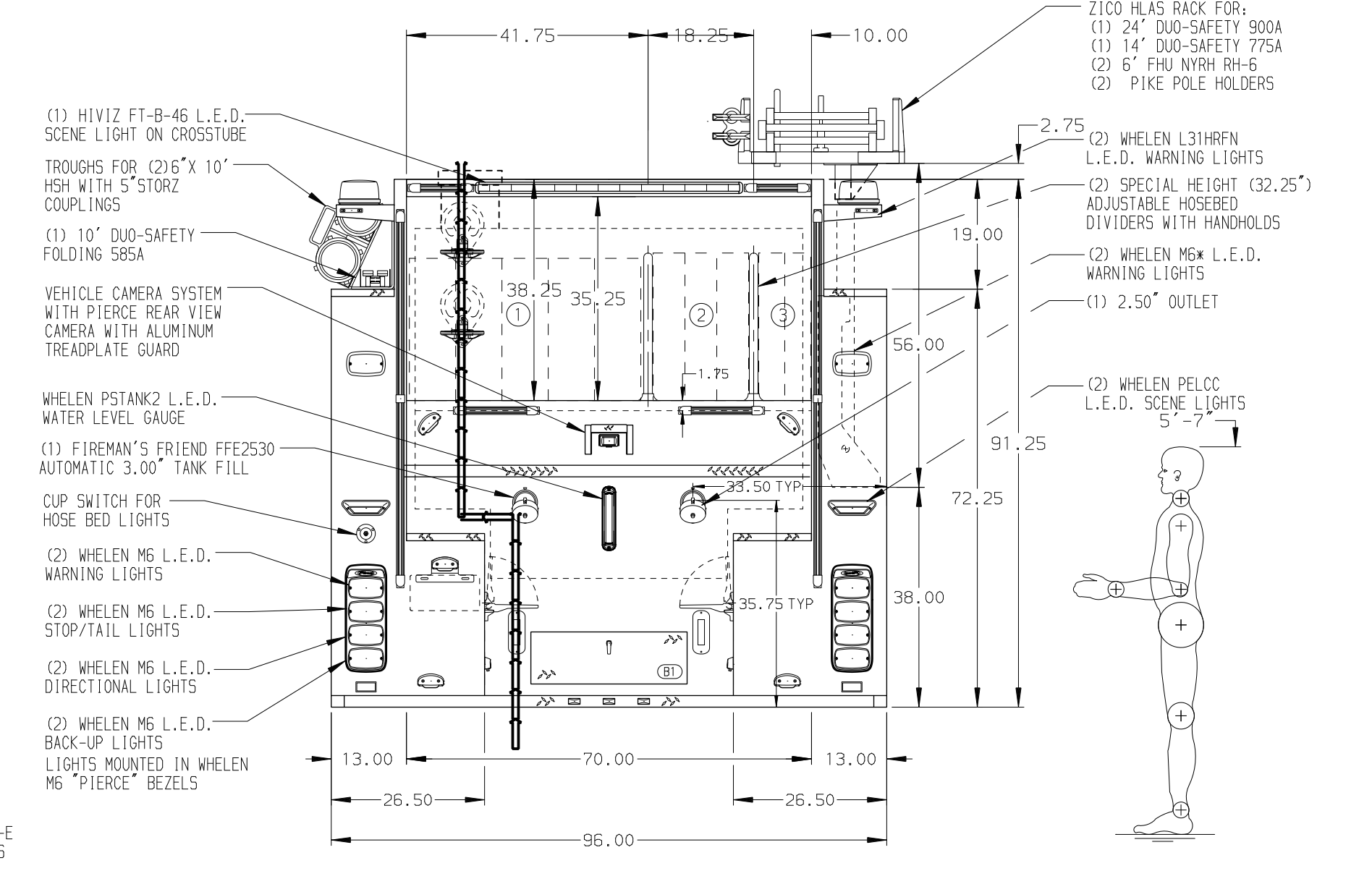
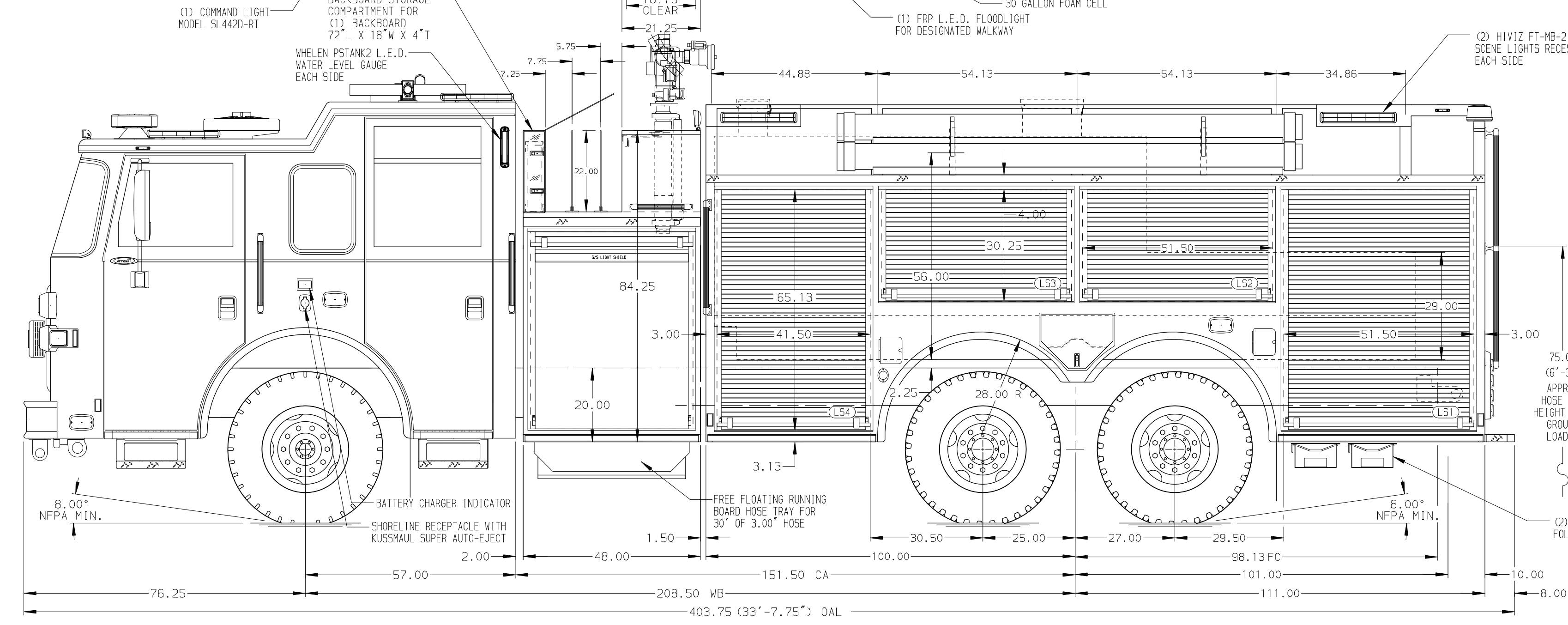


- HOSEBED CAPACITIES
- ① 1000' OF 5.00\"/>



ALUMINUM BODY

MAXIMUM O.A.L. 410.00"

SIDE ROLL AND FRONTAL IMPACT PROTECTION

CUSTOMER APPROVAL

APPROVED BY: _____
DATE: _____

REV	DATE	BY	CH	ARROW	XT



TITLE	1500-D-2030P, 2000G WATER W/30G FOAM, 211" TANKER
MAKE	PIERCE
MODEL	
DWG NO.	37165AD

JOB NO.	37165
SCALE	1:24
DATE	
DRAWN BY	LME
CHECKED BY	NPE
SHEET SIZE	D
SHEET NO.	1 OF 1

NOTE
DIMENSIONS SHOWN ARE APPROXIMATE AND ARE SUBJECT TO MINOR DEVIATIONS AS MAY OCCUR OR BE NECESSARY IN CONSTRUCTION. MINOR DETAILS NOT SHOWN.

1. ONSPOT AUTOMATIC TIRE CHAINS TO BE PROVIDED AT REAR
2. BATTERY CHARGER LOCATED BEHIND DRIVER'S SEAT
3. TEN PULL STRAPS WITH SPECIAL LENGTH ON DOORS LOCATED PER ORDER
4. TEN FULL WIDTH/DEPTH ADJUSTABLE SHELVES LOCATED PER ORDER
5. THREE FLOOR MOUNTED SLIDE-OUT TRAYS LOCATED PER ORDER
6. ONE SWING-OUT TOOL BOARD WITH PEGBOARD PATTERN LOCATED PER ORDER
7. BRUSHED 5/8" ON FLOOR LOCATED PER ORDER
8. AIR INLET WITH DISCONNECT COUPLING LOCATED ON DS STEP WELL