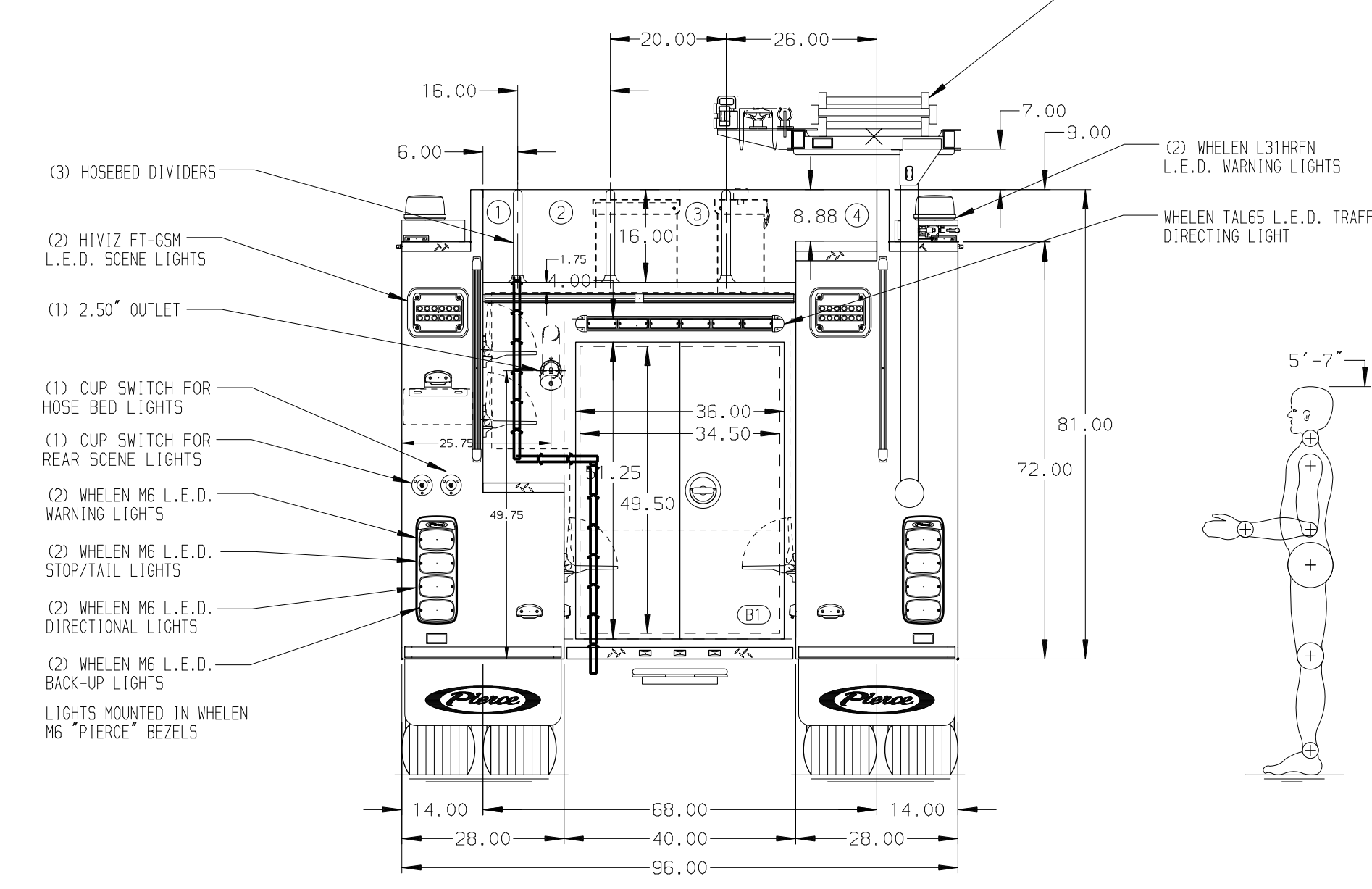


- HOSEBED CAPACITIES**
- 150' OF 2.50\"/>
- DUO-SAFETY LADDERS:**
- 24\"/>



ALUMINUM BODY

- NOTE**
DIMENSIONS SHOWN ARE APPROXIMATE AND ARE SUBJECT TO MINOR DEVIATIONS AS MAY OCCUR OR BE NECESSARY IN CONSTRUCTION. MINOR DETAILS NOT SHOWN.
1. BATTERY CHARGER/COMPRESSOR LOCATED IN COMPARTMENT L53
 2. BATTERY CHARGE INDICATOR LOCATED NEAR DRIVER'S SEAT RISER WITH BRACKET
 3. DUAL L.E.D. LIGHT STRIPS LOCATED IN HOSE BED
 4. EIGHT FULL WIDTH/DEPTH ADJUSTABLE SHELVES LOCATED PER ORDER
 5. ONE ADJUSTABLE SLIDE-OUT TRAY LOCATED PER ORDER
 6. TWO ADJUSTABLE TILTING SLIDE-OUT TRAY LOCATED PER ORDER
 7. THREE FLOOR MOUNTED SLIDE-OUT TRAYS LOCATED PER ORDER
 8. ONE SWING-OUT TOOL BOARD WITH PEGBOARD PATTERN LOCATED PER ORDER
 9. ZICO AIR BOTTLE HOLDER WITH STRAP MOUNTED ON ADJUSTABLE TRACKS LOCATED PER ORDER
 10. AIR INLET WITH DISCONNECT COUPLING LOCATED ON LS PUMP PANEL
 11. 120V SHORELINE STRAIGHT BLADE NEMA RECEPTACLE LOCATED ON LS PUMP PANEL
 12. ONE FIXED SHELF WITH SPECIAL SIDE HEIGHTS AND DROP DOWN DOOR LOCATED PER ORDER
 13. ONE VERTICAL PARTITION LOCATED PER ORDER

CUSTOMER APPROVAL				
APPROVED BY:				
DATE:				
CHASSIS DATA	TITLE	FOR	DWG NO.	
PIERCE	1250-D-750P, 720G WATER W/30G FOAM, 161\"/>			
MODEL	WINSTON-DILLARD FIRE DISTRICT			
REV	DATE	BY	CH	IMPEL FR

		JOB NO.	37242
		SCALE	DATE
DRAWN BY LME		DATE	25MAR22
CHECKED BY CZA		DATE	29MAR22
SHEET SIZE D		SHEET NO.	1 OF 1

37242AD