

RIGHT SIDE COMPARTMENTS CONTAIN THE FOLLOWING:

COMPARTMENT RS1 CONTAINS:

- (1) 4-DRAWER C-TECH CABINET
- (1) STD DEPTH FIXED SHELF
- (1) ELECTRIC CORD REEL WITH 200' OF 10/3 YELLOW CORD
- (1) HYDRAULIC REEL W/100' OF HOSE
- (1) XRT HYDRAULIC DUMP VALVE

COMPARTMENT RS2 CONTAINS:

- (1) STD DEPTH ADJ SHELF

COMPARTMENT RS3 CONTAINS:

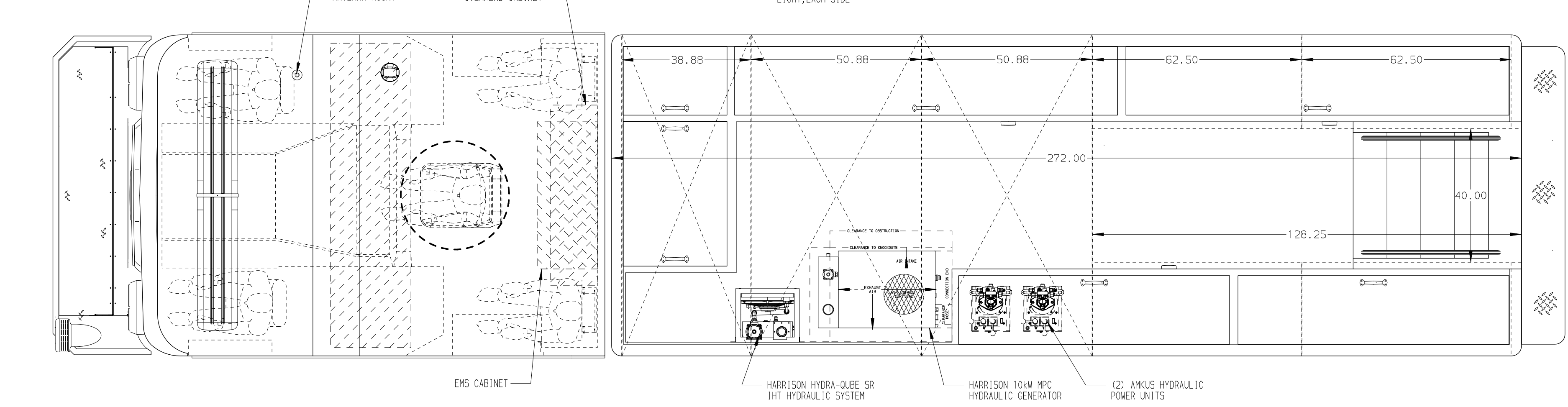
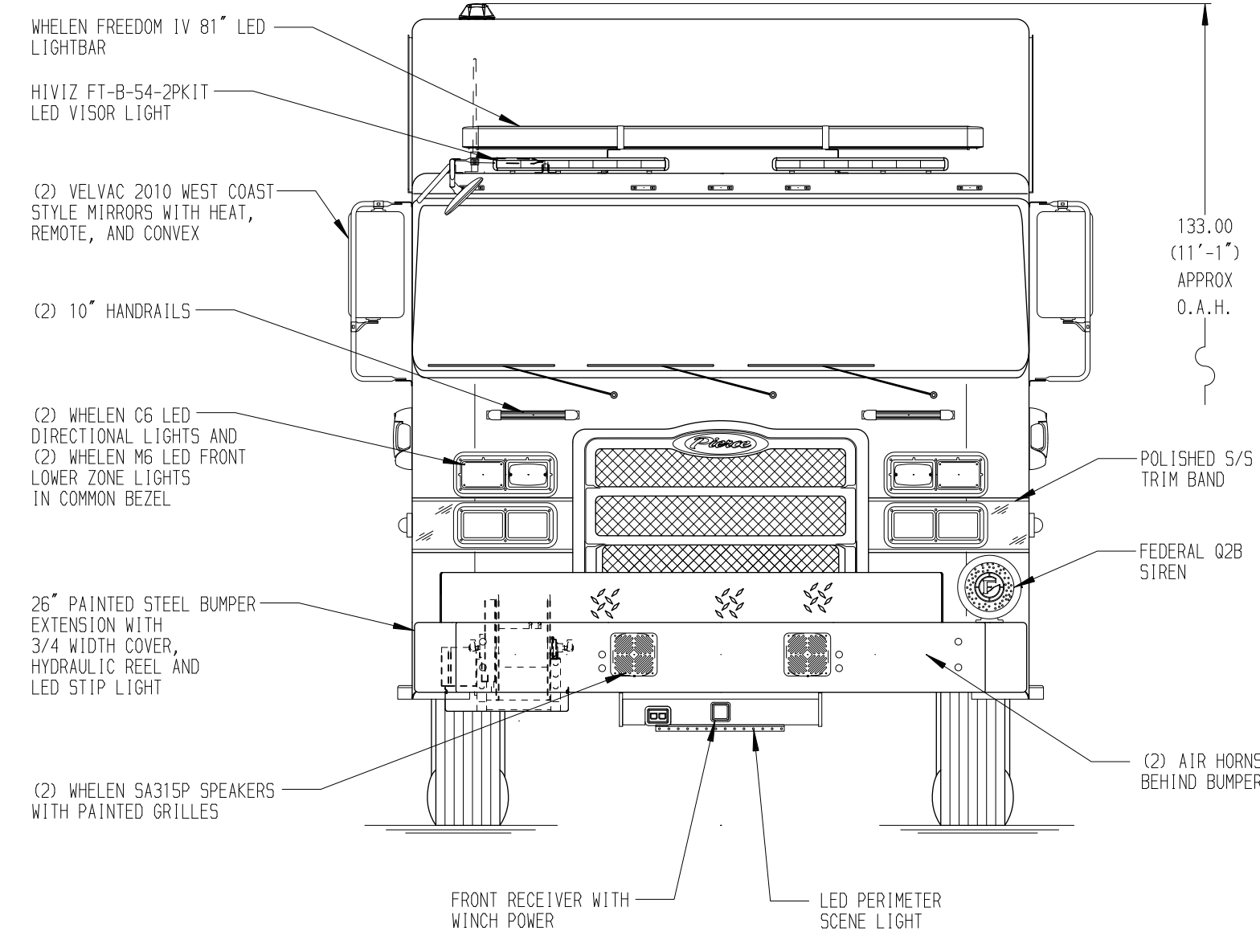
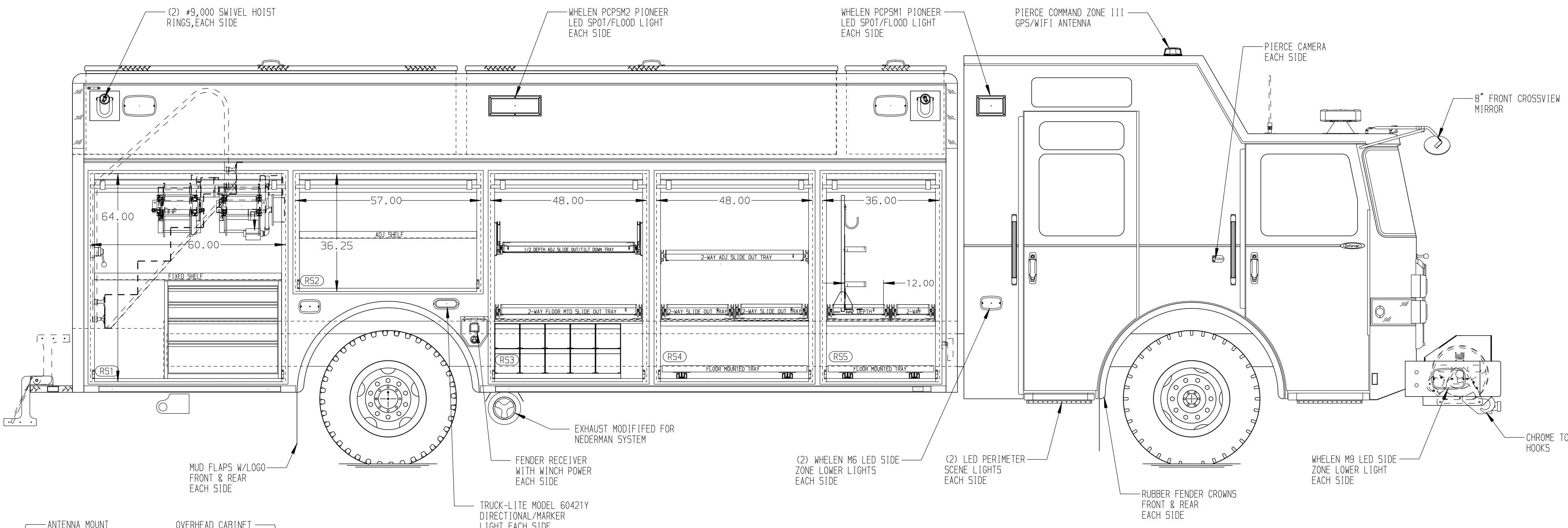
- (1) 1/2 DEPTH ADJ SLIDE OUT/TILT TRAY
- (1) 2-WAY FLOOR MOUNTED SLIDE OUT TRAY
- (1) HORIZONTAL FLOOR EXTENSION
- (1) RACK FOR 10 SCBA BOTTLES

COMPARTMENT RS4 CONTAINS:

- (1) 2-WAY ADJ SLIDE OUT TRAY
- (1) STD DEPTH FLOOR MOUNTED TRAY
- (2) 2-WAY FLOOR MOUNTED SLIDE OUT TRAYS
- (1) HORIZONTAL FLOOR EXTENSION

COMPARTMENT RS5 CONTAINS:

- (1) STD DEPTH FLOOR MOUNTED TRAY
- (1) CAB LIFT CONTROLLER
- (1) HORIZONTAL FLOOR EXTENSION
- (1) 1/2 DEPTH FLOOR MTD SLIDE OUT TRAY WITH TOOLBOARD
- (1) 2-WAY FLOOR MOUNTED SLIDE OUT TRAY
- (2) SCBA BRACKETS
- (4) J-HOOKS WITH TRACKS



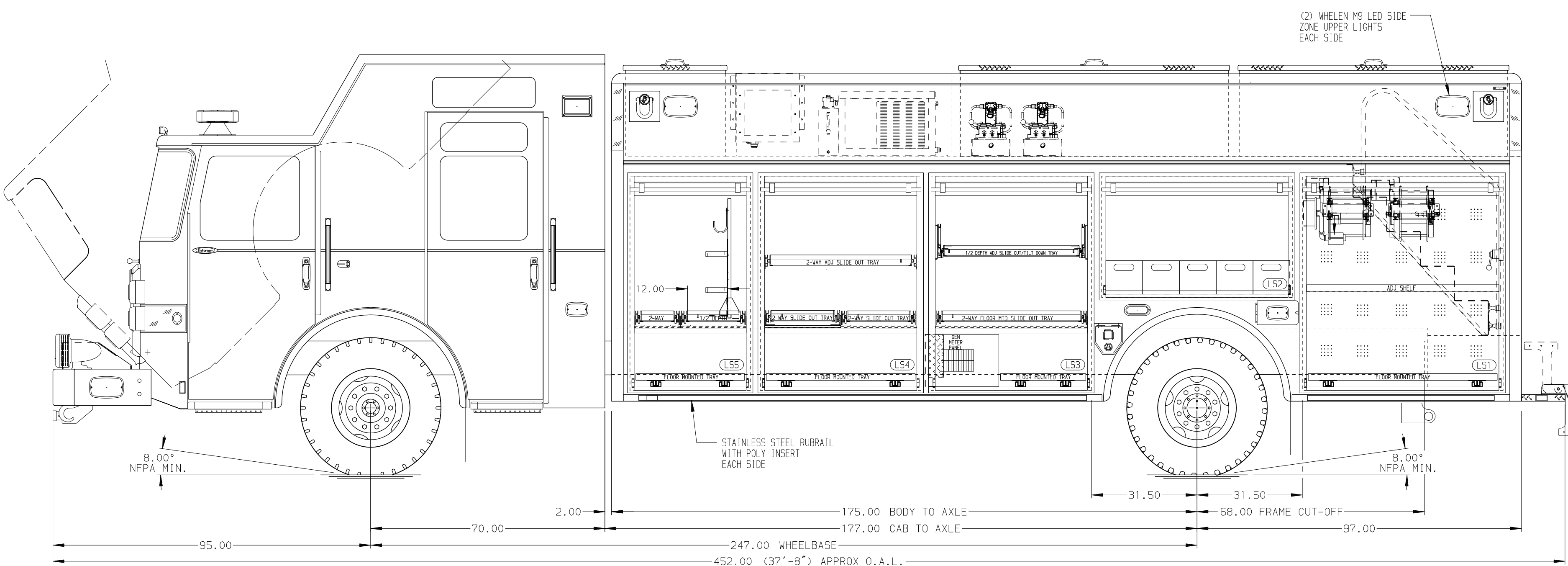
REAR COMPARTMENT CONTAINS THE FOLLOWING:

COMPARTMENT B1 CONTAINS:

-
-

COMPARTMENT B2 CONTAINS:

- (1) 110\"/>



LEFT SIDE COMPARTMENTS CONTAIN THE FOLLOWING:

COMPARTMENT LS1 CONTAINS:

- (1) STD DEPTH ADJ SHELF
- (1) STD DEPTH FLOOR MOUNTED TRAY
- PEGBOARD WITH TRACK ON REAR WALL
- (1) ELECTRIC CORD REEL WITH 200' OF 10/3 YELLOW CORD
- (1) HYDRAULIC REEL W/100' OF HOSE
- (1) XRT HYDRAULIC DUMP VALVE

COMPARTMENT LS2 CONTAINS:

- (5) POLY TOOL BOXES

COMPARTMENT LS3 CONTAINS:

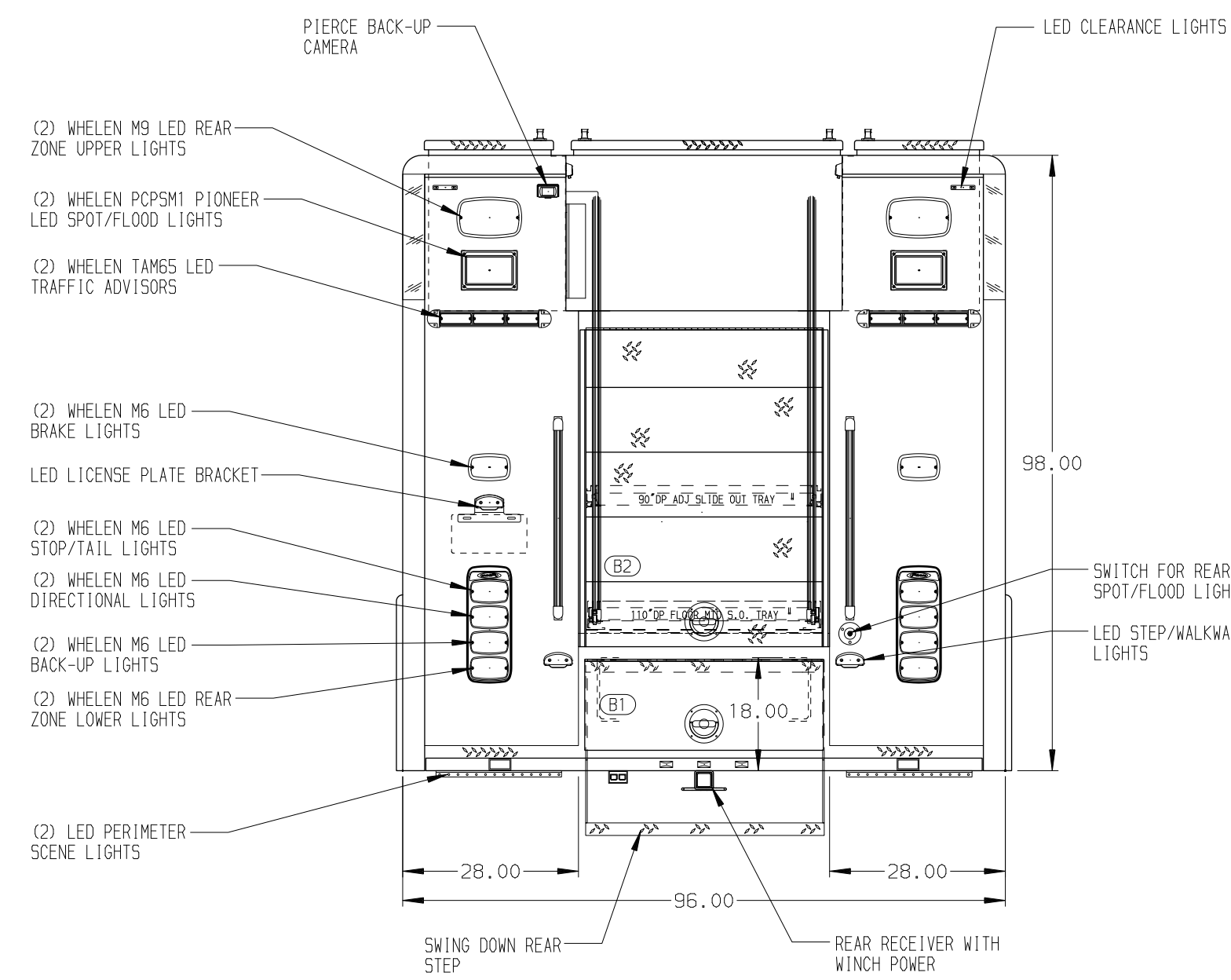
- (1) 1/2 DEPTH ADJ SLIDE OUT/TILT TRAY
- (1) STD DEPTH FLOOR MOUNTED TRAY
- (1) 2-WAY FLOOR MOUNTED SLIDE OUT TRAY
- (1) HORIZONTAL FLOOR EXTENSION
- (1) CIRCUIT BREAKER PANEL
- (1) GENERATOR METER PANEL

COMPARTMENT LS4 CONTAINS:

- (1) 2-WAY ADJ SLIDE OUT TRAY
- (1) STD DEPTH FLOOR MOUNTED TRAY
- (2) 2-WAY FLOOR MOUNTED SLIDE OUT TRAYS
- (1) HORIZONTAL FLOOR EXTENSION

COMPARTMENT LS5 CONTAINS:

- (1) STD DEPTH FLOOR MOUNTED TRAY
- (1) HORIZONTAL FLOOR EXTENSION
- (1) 1/2 DEPTH FLOOR MTD SLIDE OUT TRAY WITH TOOLBOARD
- (1) 2-WAY FLOOR MOUNTED SLIDE OUT TRAY
- (2) SCBA BRACKETS
- (4) J-HOOKS WITH TRACKS
- (1) VANNER BRAVO INVERTER/CHARGER



CUSTOMER APPROVAL

APPROVED BY: _____

DATE: _____



JOB NO. 37244

SCALE 1:24 DATE

DRAWN BY DHE 28MAR22

CHECKED BY CDK 29MAR22

SHEET SIZE D SHEET NO. 1 OF 1

NOTE

DIMENSIONS SHOWN ARE APPROXIMATE AND ARE SUBJECT TO MINOR DEVIATIONS AS MAY OCCUR OR BE NECESSARY IN CONSTRUCTION. MINOR DETAILS NOT SHOWN.

NOTES:

- AIR INLET/OUTLET WITH DISCONNECT FITTING LOCATED IN THE DRIVER'S STEP WELL OF CAB
- RAMSEY #9,000 PORTABLE RECEIVER STYLE WINCH
- POLISHED 5/5 SCUFFPLATES ON CAB AND CREW CAB DOOR JAMBS
- (2) 2-DRAWER CABINETS UNDER THE DESK IN THE CREW CAB
- FLOOR IN CAB AND CREW CAB TO BE ALUMINUM TREADPLATE
- 20A, 120V KUSMAUL SUPER AUTO-EJECT INLET LOCATED IN THE DRIVER'S STEP WELL OF CAB
- 5/5 SCUFFPLATES ON UPPER BODY CORNERS
- SMART TV LOCATED IN THE RIGHT SIDE OF THE CREW CAB
- 5/5 GUARDS ON ALL BODY ROLL-UP DOORS
- PULL STRAPS ON ALL BODY ROLL-UP DOORS
- PIERCE LED STRIP LIGHTS IN ALL BODY AND HATCH COMPARTMENTS
- TURTLE TILE MATTING ON ALL SHELVES AND TRAYS AND IN EACH HATCH COMPARTMENT

CLEAR DOOR WIDTH KEY			
AMOR ROLL UP DOORS:	-2 1/4"		
CURTAIN ROLL UP DOORS:	-2 1/2"		
PIERCE DOUBLE LAP DOORS:	-4 1/4"		
PIERCE LIFT-UP LAP DOORS:	-1 1/2"		
(EX: 60" F-F - 2 1/4" = 57 3/4" CLEAR)			
(F-F) = FRAME TO FRAME			
REV	DATE	BY	CH
			EN7024

TITLE HEAVY DUTY RESCUE NON-WALKIN

FOR CLAYTON COUNTY FIRE DEPARTMENT BID #809

JEFF AMLONG

DWG NO. 37244AD