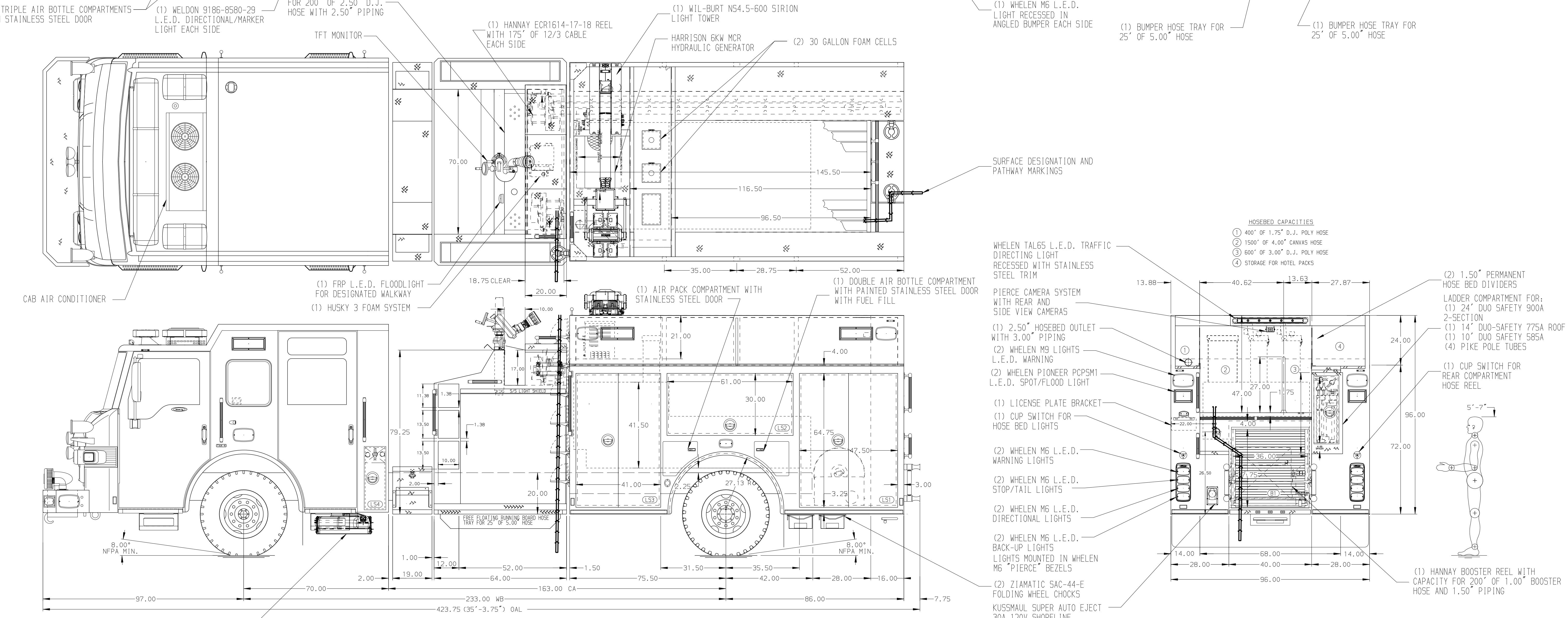


- HOSEBED CAPACITIES
- ① 400' OF 1.75" D.J. POLY HOSE
 - ② 1500' OF 4.00" CANVAS HOSE
 - ③ 600' OF 3.00" D.J. POLY HOSE
 - ④ STORAGE FOR HOTEL PACKS



NOTE
 DIMENSIONS SHOWN ARE APPROXIMATE AND ARE SUBJECT TO MINOR DEVIATIONS AS MAY OCCUR OR BE NECESSARY IN CONSTRUCTION. MINOR DETAILS NOT SHOWN.

CUSTOMER APPROVAL				Pierce MANUFACTURING INC.	JOB NO.	37249	
APPROVED BY:					SCALE	1:24	DATE
DATE:				CHASSIS DATA	TITLE	1500-D-560P, 500 G OF WATER W/ (2) 30 G FOAM CELLS	
			FOR		161" FDLER, LDRS. BESIDE TANK, DELUGE		
			DWG NO.		WEST ALBANY FIRE DISTRICT ALBANY, NEW YORK		
REV	DATE	BY	CH	VELOCITY FR		SHEET NO.	1 OF 1

37249AD