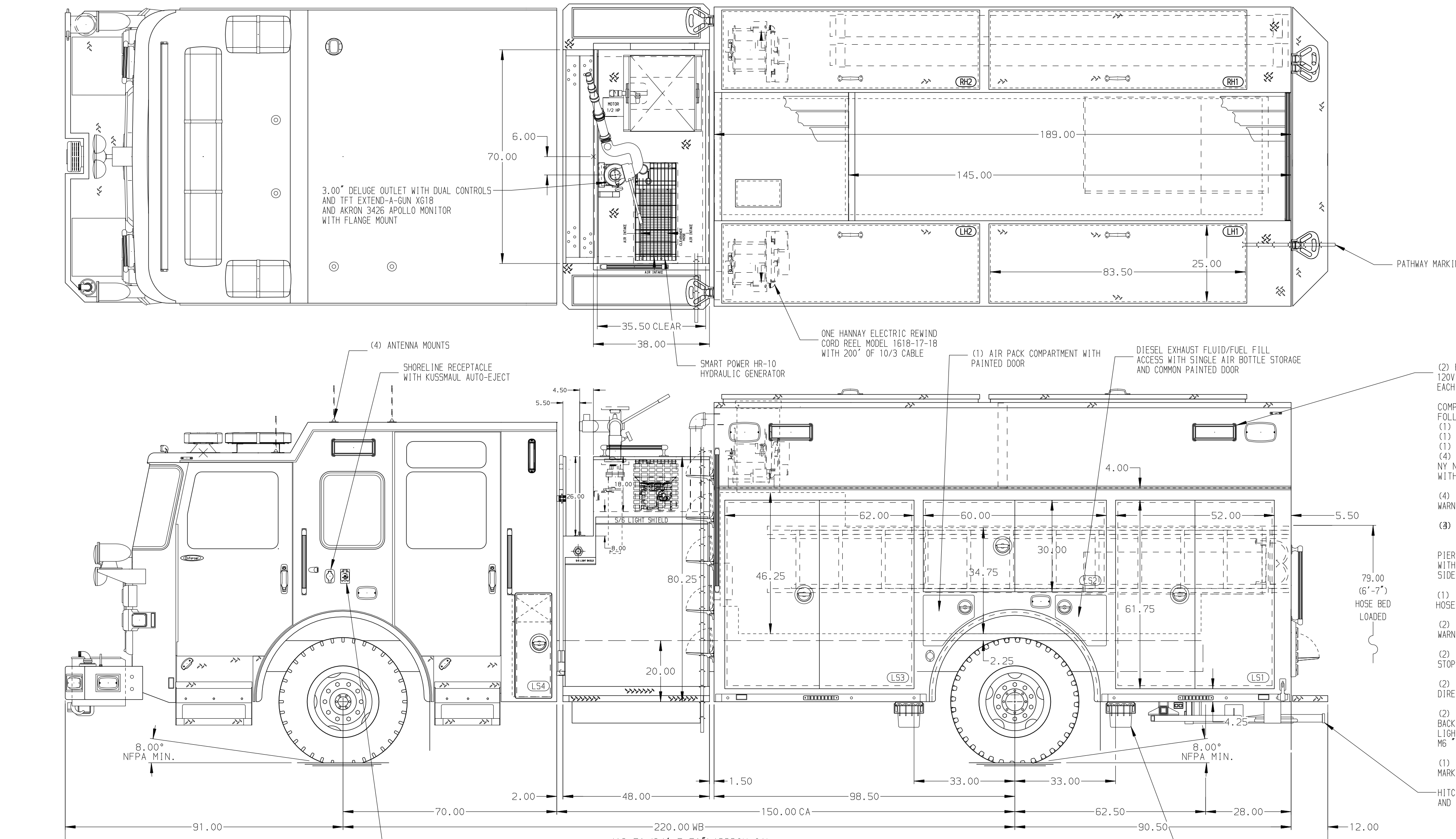
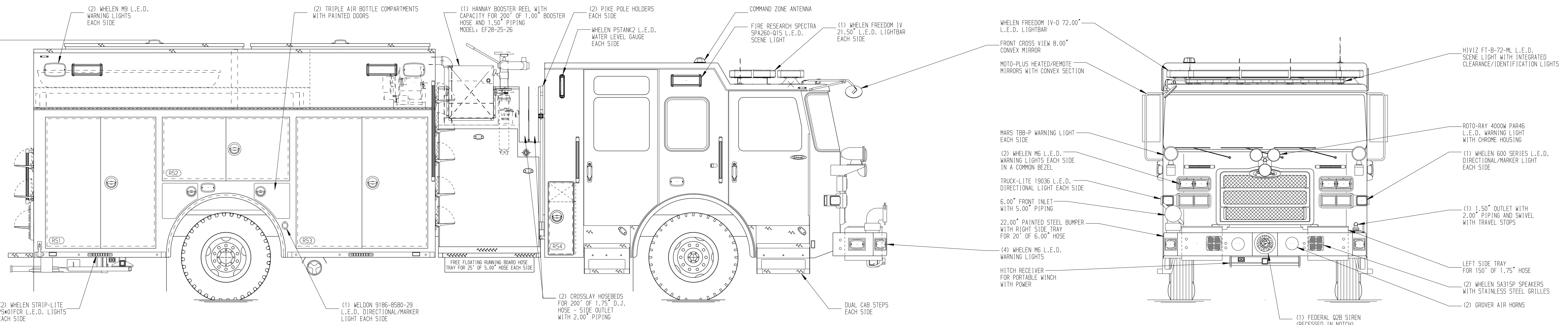
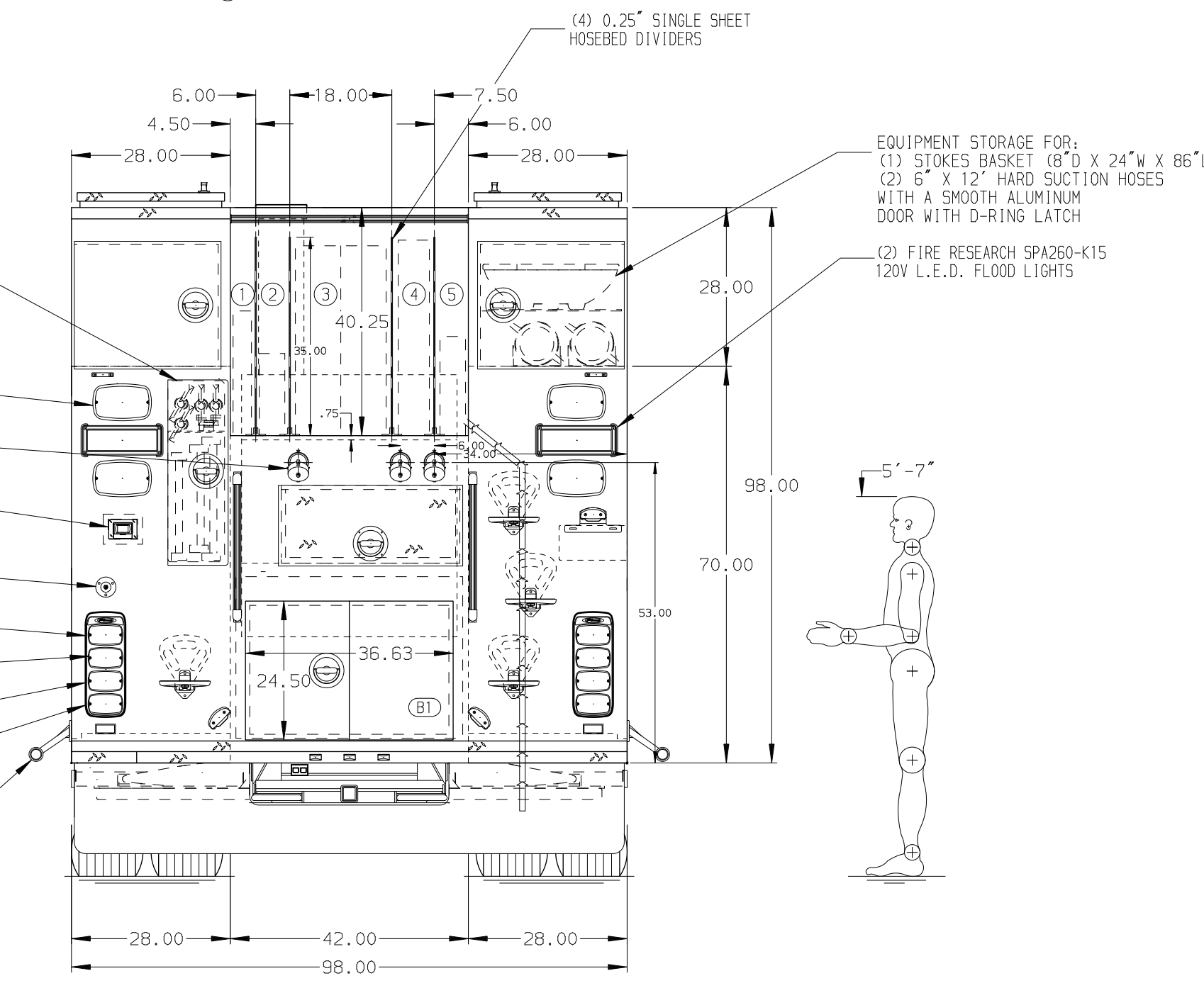


127.00
(10'-7")
APPROX
O.A.H.



- HOSEBED CAPACITIES
- ① 350' OF 1.75" D.J. POLY HOSE
 - ② 200' OF 2.50" D.J. POLY HOSE
 - ③ 1000' OF 5.00" D.J. POLY HOSE
 - ④ 500' OF 3.00" D.J. POLY HOSE
 - ⑤ 250' OF 2.50" D.J. POLY HOSE



ALUMINUM BODY SIDE ROLL AND FRONTAL IMPACT PROTECTION

NOTE
 DIMENSIONS SHOWN ARE APPROXIMATE AND ARE SUBJECT TO MINOR DEVIATIONS AS MAY OCCUR OR BE NECESSARY IN CONSTRUCTION. MINOR DETAILS NOT SHOWN.

- 1. ONSPOT AUTOMATIC TIRE CHAINS TO BE PROVIDED AT REAR
- 2. ONE 10000# WARN ZEON PORTABLE RECEIVER TYPE WINCH
- 3. KUSSMAUL BATTERY CHARGER LOCATED BEHIND DRIVER SEAT
- 4. BATTERY CHARGER LOCATED BEHIND DRIVER SEAT
- 5. BATTERY CHARGER INDICATOR LOCATED ON DRIVER'S SEAT RISER
- 6. BRUSHED STAINLESS STEEL SCUFFPLATE INSIDE EACH BODY COMPARTMENT DOOR
- 7. CIRCUIT BREAKER PANEL IN COMPARTMENT PER SHOP ORDER

CUSTOMER APPROVAL

APPROVED BY: _____
 DATE: _____



JOB NO. 37265

SCALE 1:24 DATE

DRAWN BY JUS 04MAR22

CHECKED BY CDU 04MAR22

SHEET SIZE D SHEET NO. 1 OF 2

CHASSIS DATA	TITLE	1500-D-750 GAL POLY, 189" HDRP BODY
MAKE	FOR	LADDERS THRU TANK, (2) CROSSLAYS, DELUGE
PIERCE		SELLERSVILLE FIRE DEPARTMENT
MODEL		SELLERSVILLE, PENNSYLVANIA
ENFORCER	DWG NO.	37265AD-SH1