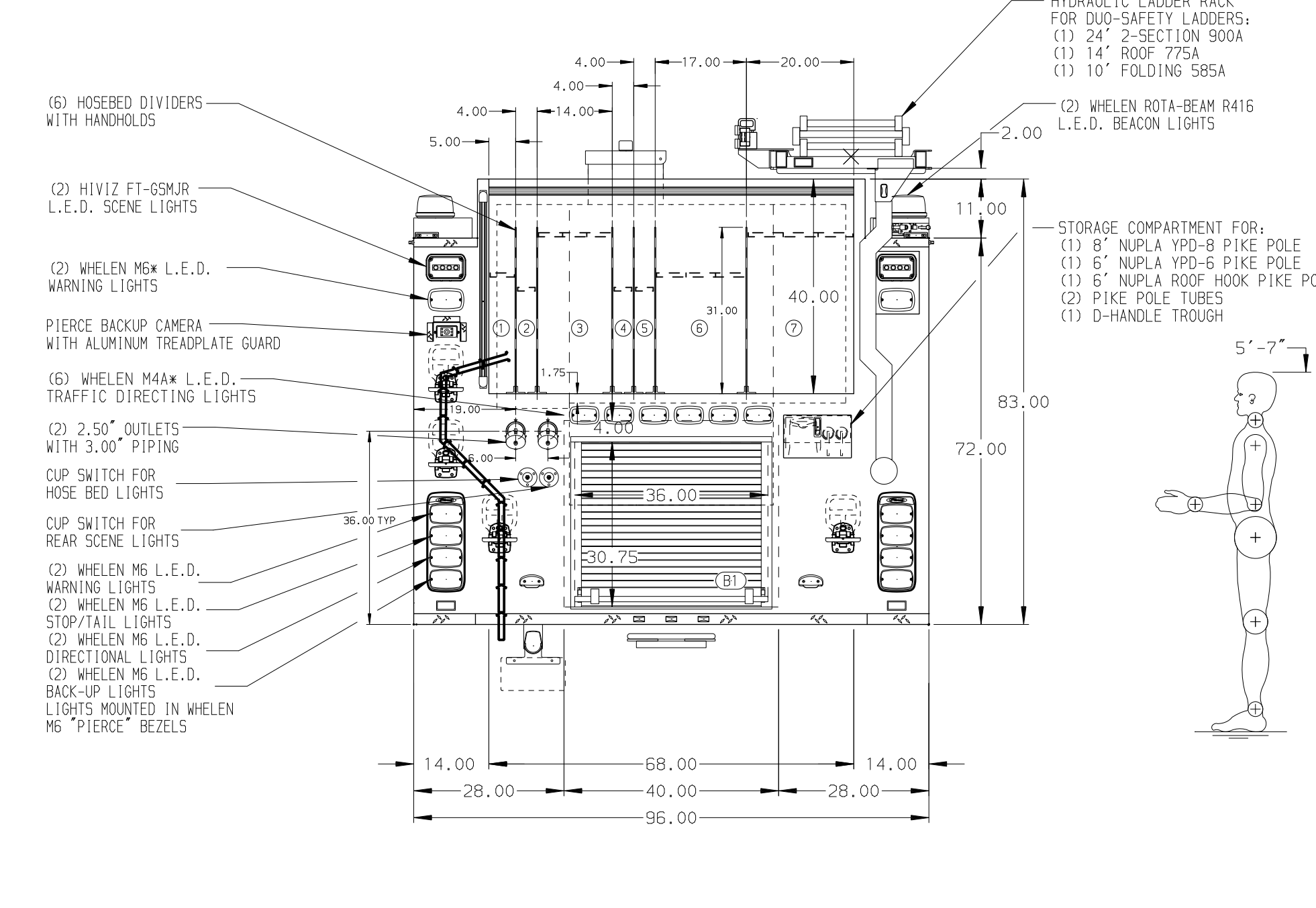
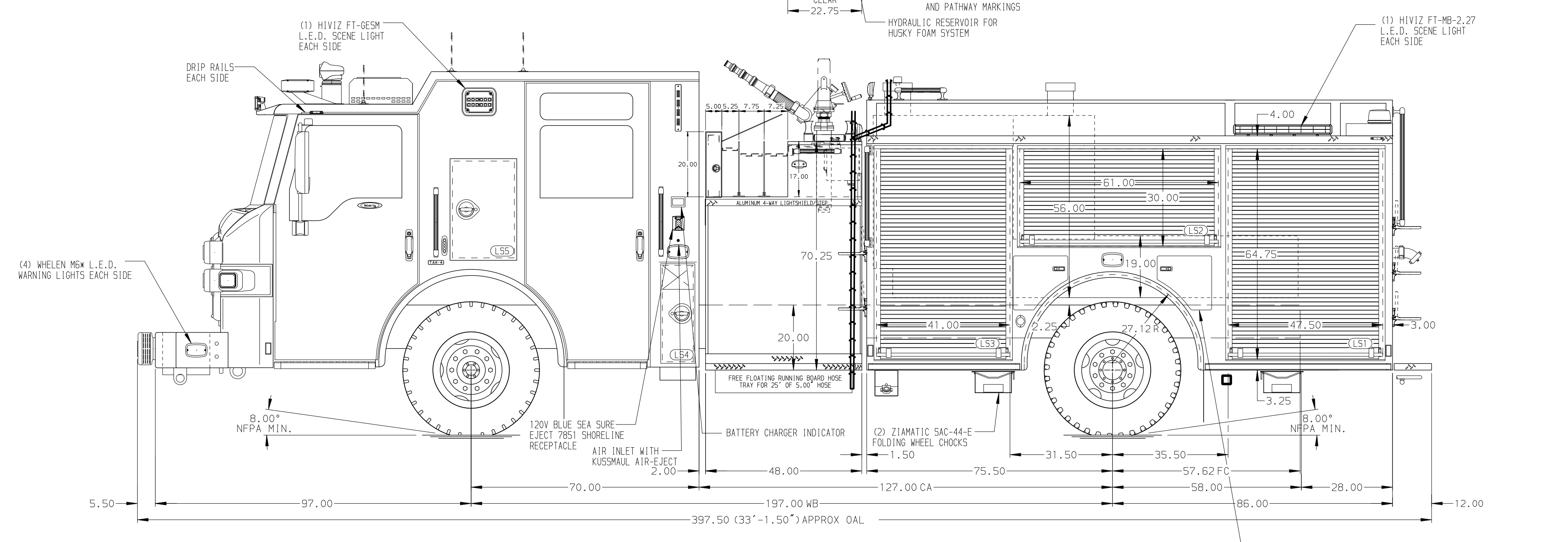


- HOSEBED CAPACITIES**
- ① - 200' OF 2.25" D.J. POLY HOSE (SINGLE STACK)
 - ② - 200' OF 1.75" D.J. POLY HOSE (SINGLE STACK)
 - ③ - 800' OF 2.25" D.J. POLY HOSE (TRIPLE STACK)
 - ④ - 200' OF 1.75" D.J. POLY HOSE (SINGLE STACK)
 - ⑤ - 200' OF 1.75" D.J. POLY HOSE (SINGLE STACK)
 - ⑥ - 600' OF 3.00" D.J. POLY HOSE (TRIPLE STACK)
 - ⑦ - 800' OF 4.00" D.J. POLY HOSE (TRIPLE STACK)



ALUMINUM BODY

SIDE ROLL AND FRONTAL IMPACT PROTECTION

CUSTOMER APPROVAL				
APPROVED BY:		CHASSIS DATA	TITLE	1500-D-780P, 750G WATER W/ 30G FOAM, 161" FDLR BODY
DATE:		MAKE	FOR	RS HYD. LADDER RACK, (2) XLAYS, (1) DEADLAY, DELUGE
		PIERCE		MEDFORD FIRE DEPARTMENT
		MODEL	DWG NO.	37294AD
REV	DATE	BY	CH	VELOCITY FR



JOB NO.	37294
SCALE	1:24
DATE	08APR22
DRAWN BY	LME
CHECKED BY	NPE
SHEET SIZE	D
SHEET NO.	1 OF 1

- NOTE**
DIMENSIONS SHOWN ARE APPROXIMATE AND ARE SUBJECT TO MINOR DEVIATIONS AS MAY OCCUR OR BE NECESSARY IN CONSTRUCTION. MINOR DETAILS NOT SHOWN.
- ONSPOT AUTOMATIC TIRE CHAINS TO BE PROVIDED AT REAR
 - BATTERY CHARGER LOCATED IN CAB BEHIND DRIVER'S SEAT
 - DRIP PAN GUARD FOR ROLL-UP DOOR LOCATED PER SHOP ORDER
 - TEN FULL WIDTH/DEPTH ADJUSTABLE SHELVES LOCATED PER SHOP ORDER
 - TWO ADJUSTABLE FULL WIDTH/DEPTH SHELVES WITH SPECIAL SIDE HEIGHTS LOCATED PER SHOP ORDER
 - FOUR FLOOR MOUNTED SLIDE-OUT TRAY LOCATED PER SHOP ORDER
 - ONE SWING-OUT TOOL BOARD WITH PEGBOARD PATTERN LOCATED PER SHOP ORDER
 - FOUR 120V DUPLEX RECEPTACLES LOCATED PER SHOP ORDER
 - HORIZONTAL EQUIPMENT MOUNTING TRACKS PER SHOP ORDER
 - AIR OUTLET WITH SHUT OFF VALVE LOCATED ON 20S PUMP PANEL
 - ONE CTECH DRAWER ASSEMBLY WITH DIVIDERS LOCATED PER SHOP ORDER