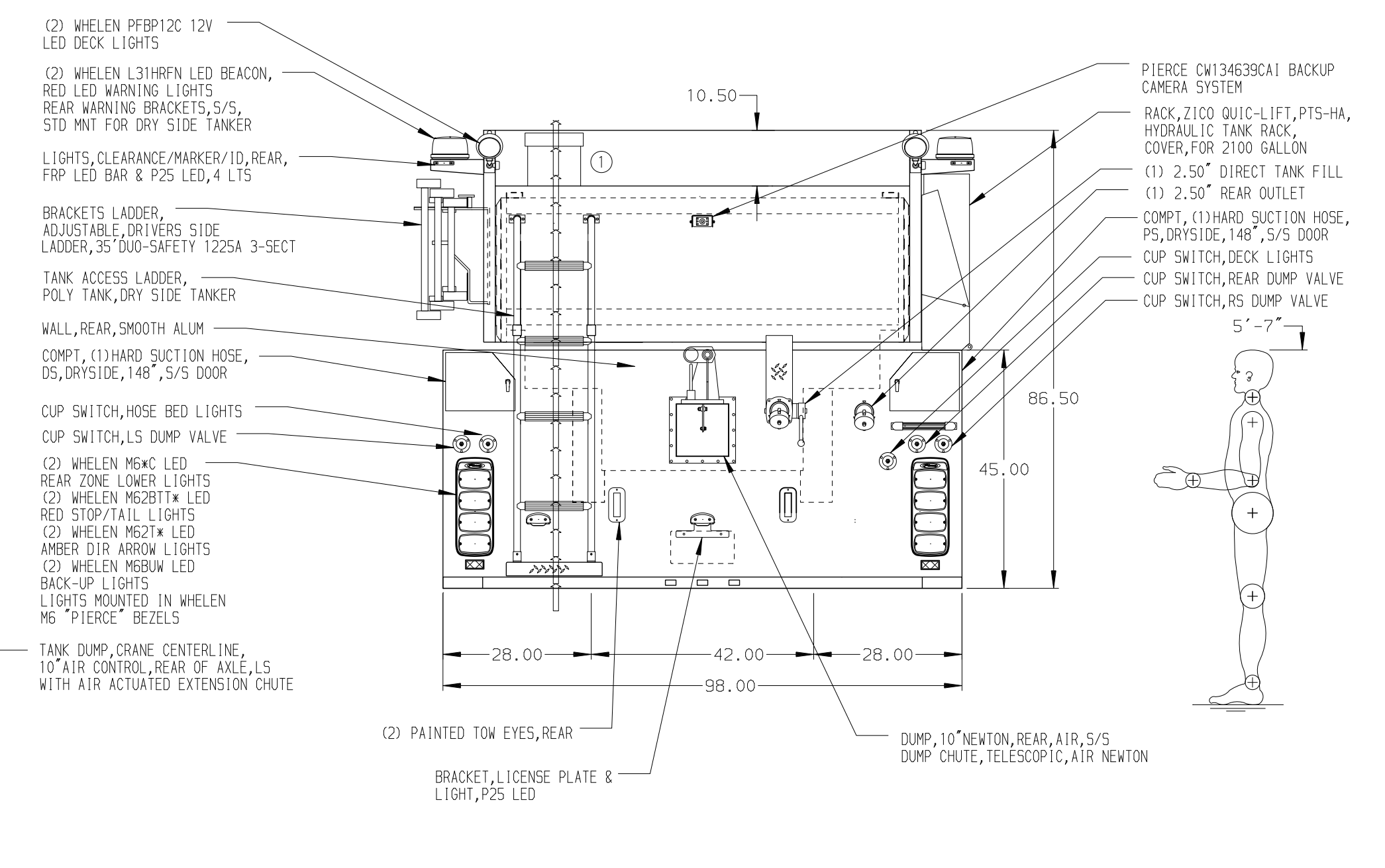
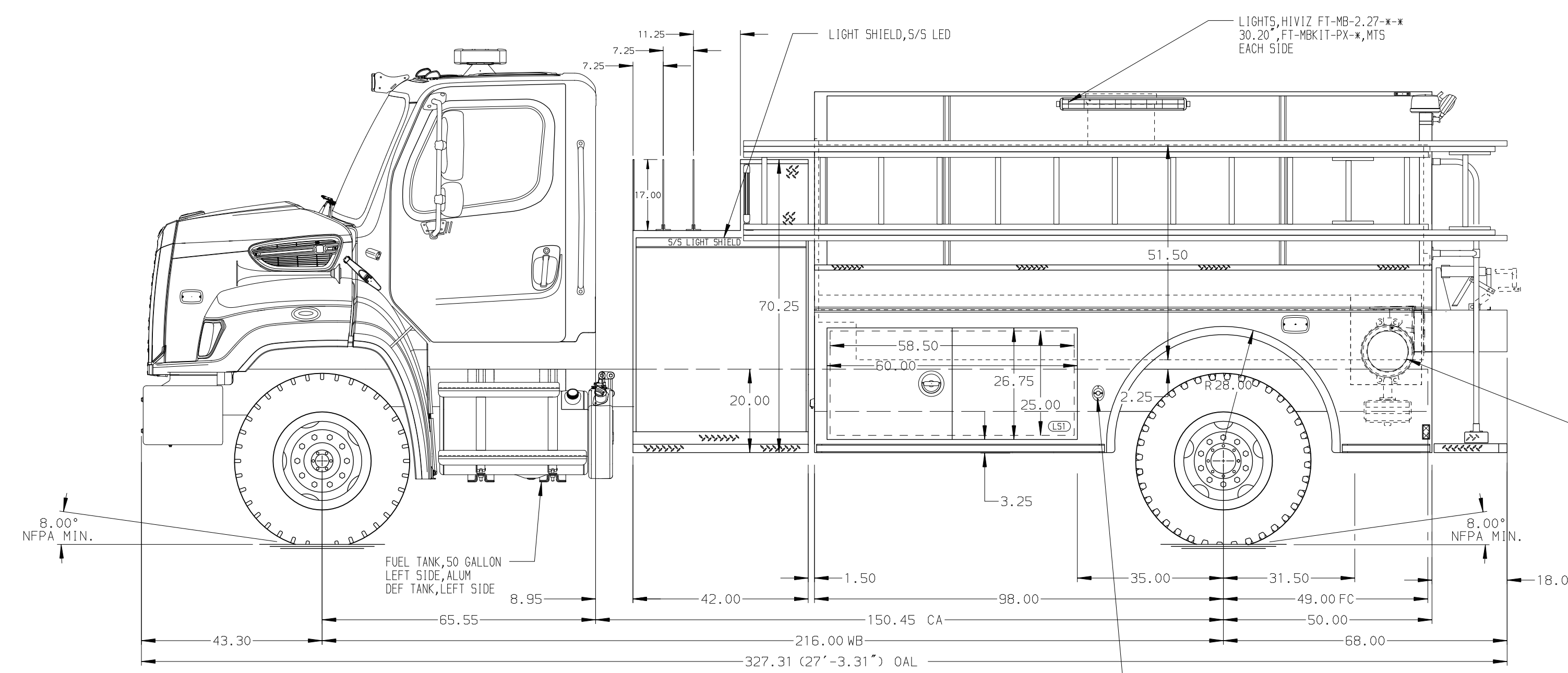


HOSEBED CAPACITIES  
 ① 200' OF 2.50" D.I. POLYESTER HOSE



ALUMINUM BODY

NOTE  
 DIMENSIONS SHOWN ARE APPROXIMATE AND ARE SUBJECT TO MINOR DEVIATIONS AS MAY OCCUR OR BE NECESSARY IN CONSTRUCTION. MINOR DETAILS NOT SHOWN.

REV	DATE	BY	CH	108SD
1	10NOV22	RHU	DDR	MAKE
2	01NOV22	RHU	NAS	FL
3	09SEP22	JLA	NAS	MODEL

		JOB NO.	37324
		SCALE	DATE
MANUFACTURING INC. BRADENTON, FLORIDA		DRAWN BY	JLA
TITLE 1250-D-1800 POLY, 148" DRYSIDE 42" SIDE CONTROL, (2) 1.5" CROSSLAYS, (1) DEADLAY		CHECKED BY	RWI
FOR AMELIA COUNTY FIRE CO.1 AMELIA COURTHOUSE, VIRGINIA		SHEET SIZE	SHEET NO.
DWG NO.		37324AD	
108SD		1 OF 1	