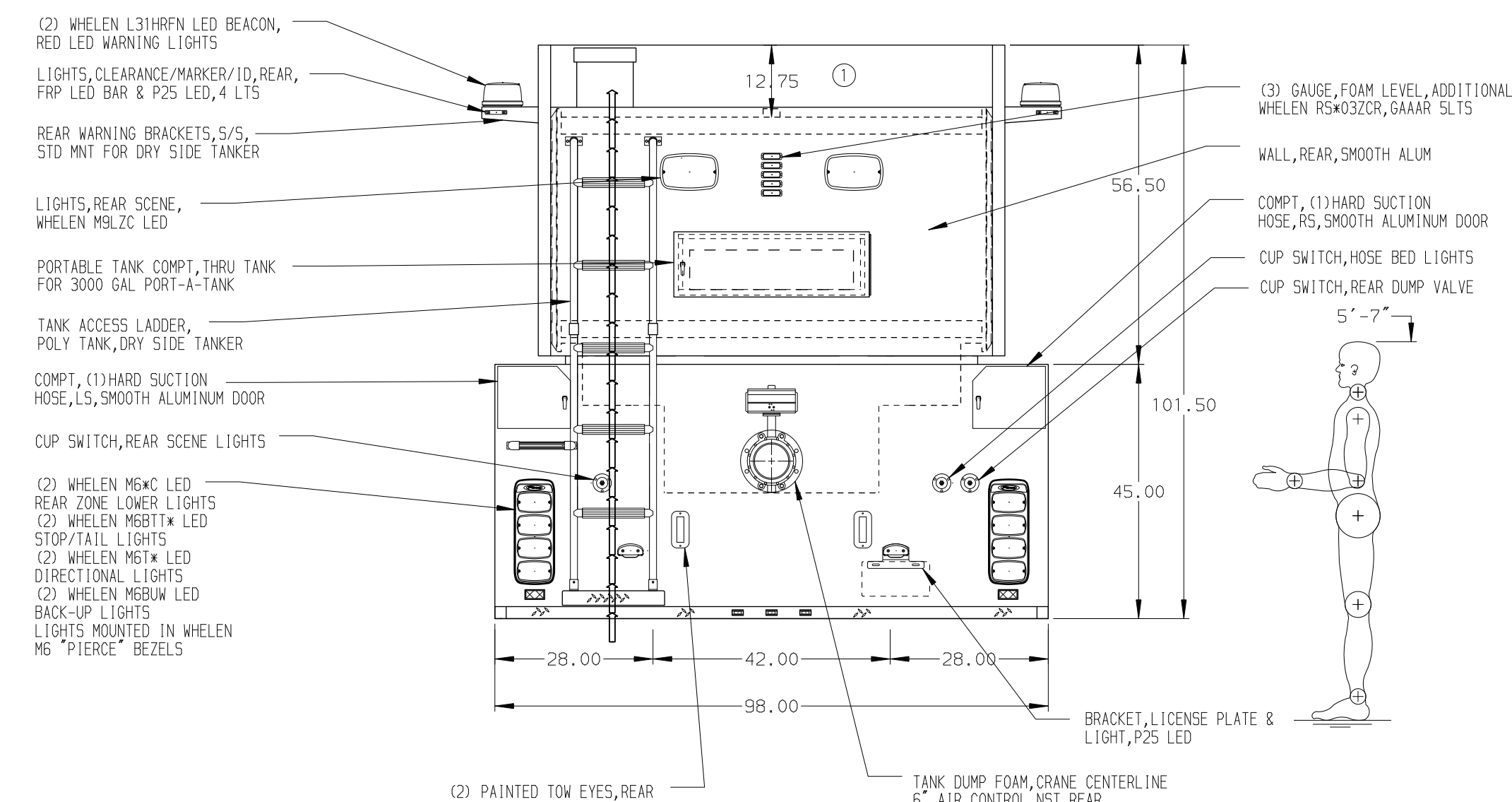
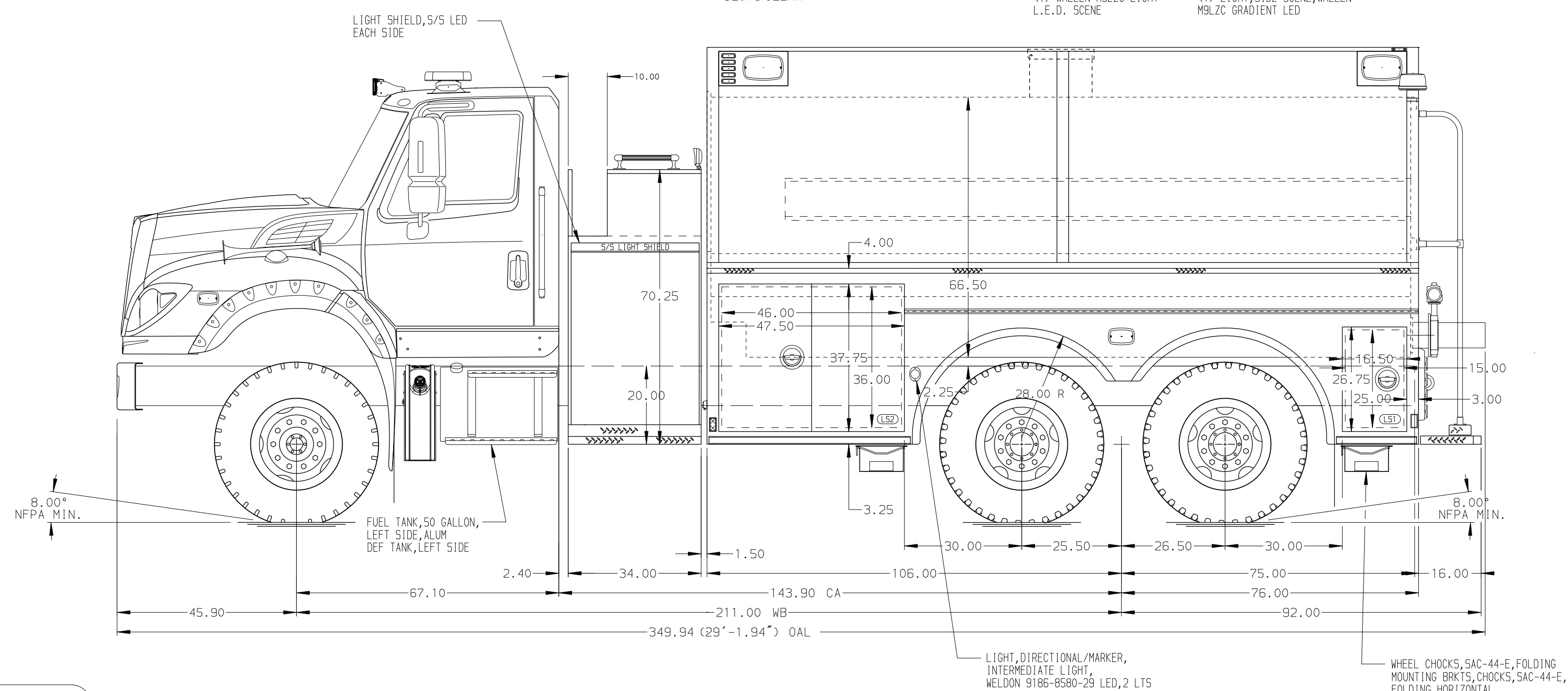


HOSEBED CAPACITIES  
 ① 200' OF 2.50" D.J. POLY HOSE



ALUMINUM BODY

NOTE  
 DIMENSIONS SHOWN ARE APPROXIMATE AND ARE SUBJECT TO MINOR DEVIATIONS AS MAY OCCUR OR BE NECESSARY IN CONSTRUCTION. MINOR DETAILS NOT SHOWN.

REV	DATE	BY	CH

		JOB NO.	37337
		SCALE	DATE
TITLE	300-D-2750P, 182" DRY SIDE TANKER, FOAM ONLY 34" SIDE CONTROL	DRAWN BY	JLA 03JUN22
FOR	BP CHEERY POINT REFINERY BP CHEERY POINT REFINERY, BLAINE, WASHINGTON	CHECKED BY	RWI 07JUN22
DWG NO.	37337AD	SHEET SIZE	SHEET NO.
		D	1 OF 1