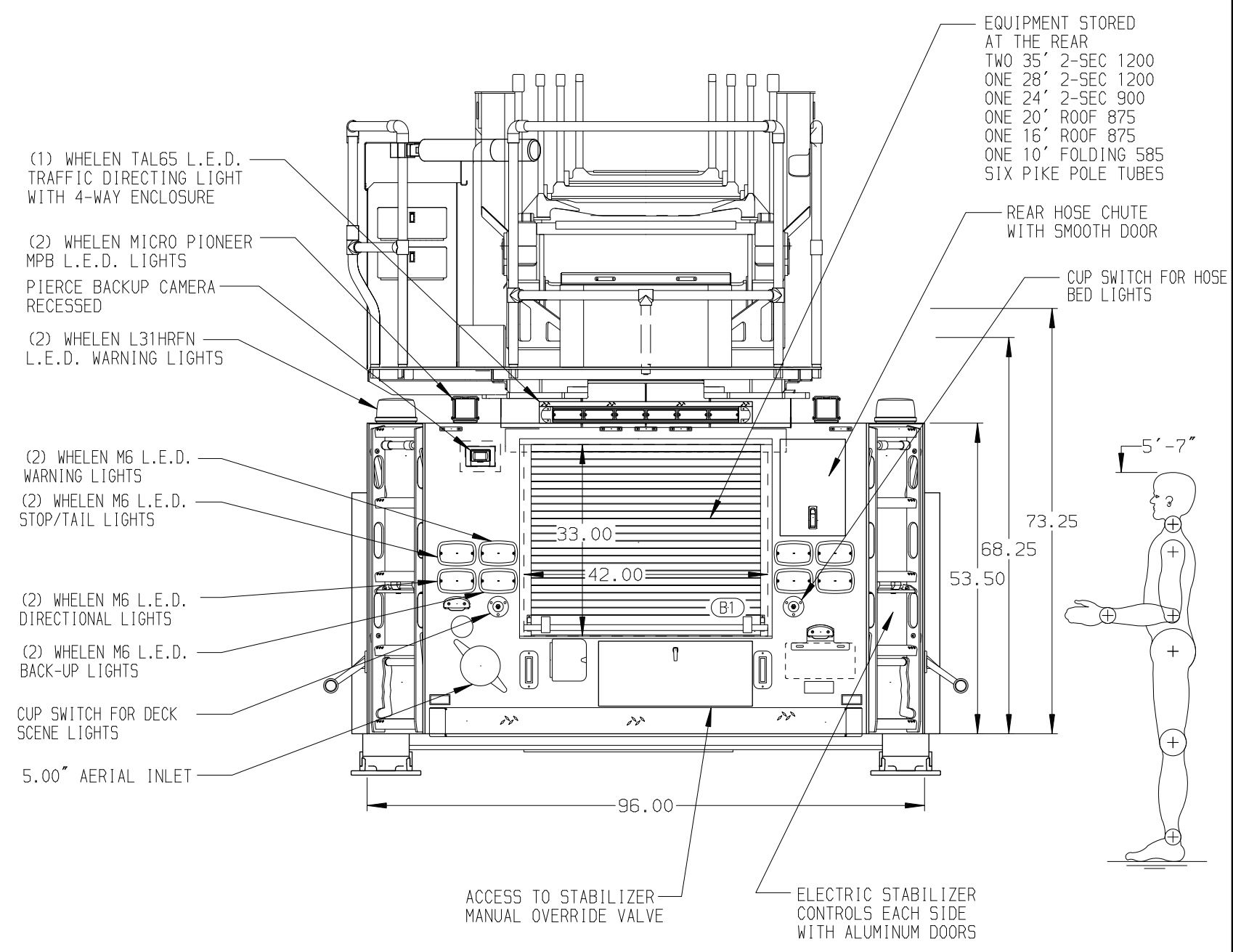
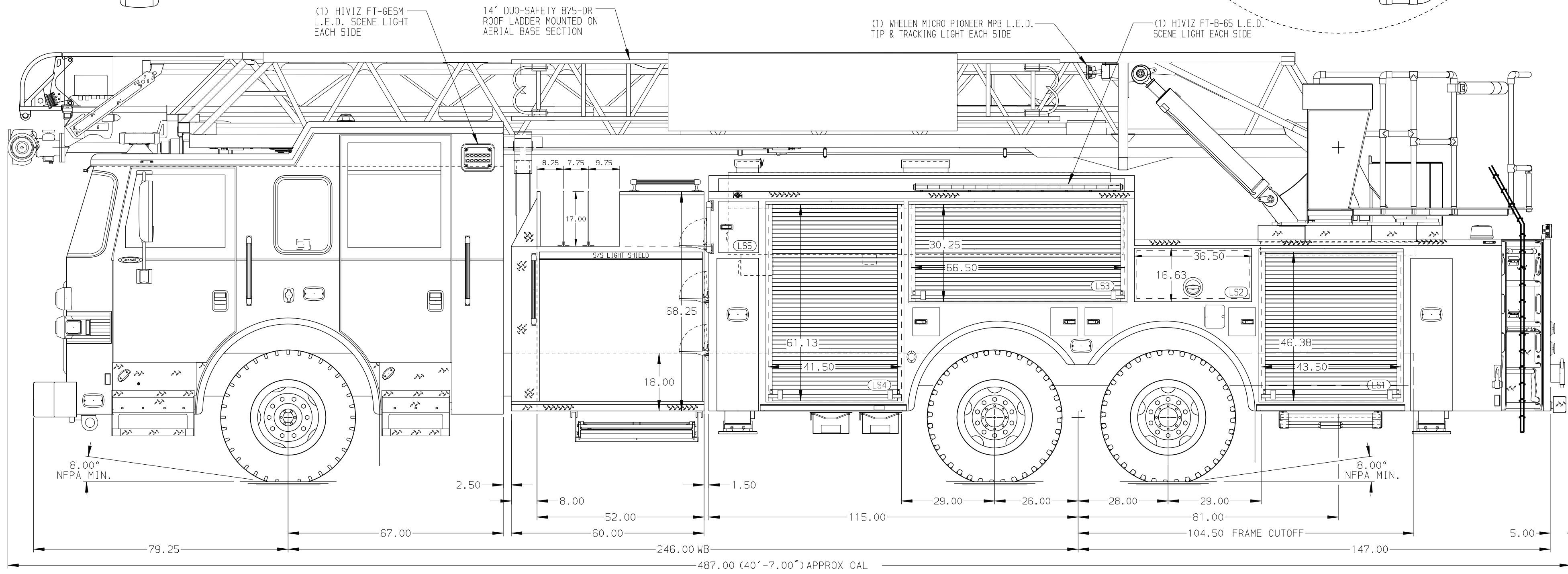


BODY	WATER TANK
107' ASL Tandem Axle Aluminum Body	430 Gallon Notched Poly Water Tank
COMPT, LEFT SIDE FRONT	Foam System
FH/FD RollUp Forward w/o Chute	Plumbing for Future Husky Foam System
COMPT, LEFT SIDE REAR	Foam Cell
FH/FD RollUp and Lift-up Rearward	20 Gallon Foam Cell, Reduced Water
COMPT, RIGHT SIDE FRONT	
Full Height RollUp Forward	
COMPT, RIGHT SIDE REAR	
Full Height RollUp and Lift-up Rearward	



CHASSIS	CAB	AXLE, FRONT, CUSTOM	TRANSMISSION	PUMPHOUSE	CROSSLAYS, 1.50"	SPEEDLAYS	SAFETY	CUSTOMER APPROVAL	Pierce MANUFACTURING INC.		JOB NO.		
Arrow XT Chassis ENGINE 510 HP Paccor MX13 Engine	6710 Deep Notched Arrow XT Cab BUMPER 10" Extended Painted Steel	21,500 Lb Meritor Axle AXLE, REAR 52,000 Lb Meritor Axle	Allison 5th Gen, 4500 EV5 P	52" Control Zone Side Mount PUMP 2000 GPM Waterous CSU	(2) 1.50" Standard Capacity CROSSLAYS, 2.50"	Speedlays Not Required GENERATOR Generator Not Required	Side Roll and Frontal Impact Protection	APPROVED BY: _____ DATE: _____			37375		
NOTE DIMENSIONS SHOWN ARE APPROXIMATE AND ARE SUBJECT TO MINOR DEVIATIONS AS MAY OCCUR OR BE NECESSARY IN CONSTRUCTION. MINOR DETAILS NOT SHOWN.													
1. SHORELINE RECEPTACLE WITH KUSSMAUL SUPER AUTO-EJECT LOCATED ON DRIVER SIDE OF THE CAB 2. AIR INLET WITH DISCONNECT COUPLING IN THE DRIVER SIDE STEPWELL 3. DEF TANK MOUNTED UNDER CAB ON THE DRIVER'S SIDE 4. BATTERY CHARGER LOCATED IN CAB PER SHOP ORDER 5. BATTERY CHARGER INDICATOR BEHIND DRIVER'S SEAT DISPLAYED THROUGH WINDOW 6. L.E.D. LIGHT STRIPS LOCATED IN THE HOSE BED PER SHOP ORDER 7. STABILIZER COMPARTMENTS MODIFIED FOR 16" SPREAD, 18" GROUND PENETRATION 8. DRIP PAN GUARDS OVER ROLL DOORS PER SHOP ORDER 9. FIVE ADJUSTABLE SHELVES IN COMPARTMENTS PER SHOP ORDER			10. FOUR FLOOR MOUNTED SLIDE-OUT TRAYS IN COMPARTMENTS PER SHOP ORDER 11. ONE SWING-OUT TOOLBOARD IN COMPARTMENT PER SHOP ORDER 12. 14.00" AERIAL LIMITED RETRACTION 13. DC POWER TO AERIAL TIP 14. 1.00" LOWERED AERIAL PEDESTAL 15. LIFTING EYE ROPE RESCUE ATTACHMENT AT AERIAL TIP 16. 1500 GPM HIGH FLOW WATERWAY			CHASSIS DATA MAKE PIERCE MODEL ARROW XT					TITLE 107' ASCENDANT AERIAL LADDER AND BODY ASSEMBLY FOR PIERCE FIELD UNIT APPLETON, WISCONSIN DWG NO. 37375AD		DRAWN BY TKA 23SEP21 CHECKED BY ZCH 27SEP21 SHEET SIZE D SHEET NO. 1 OF 1