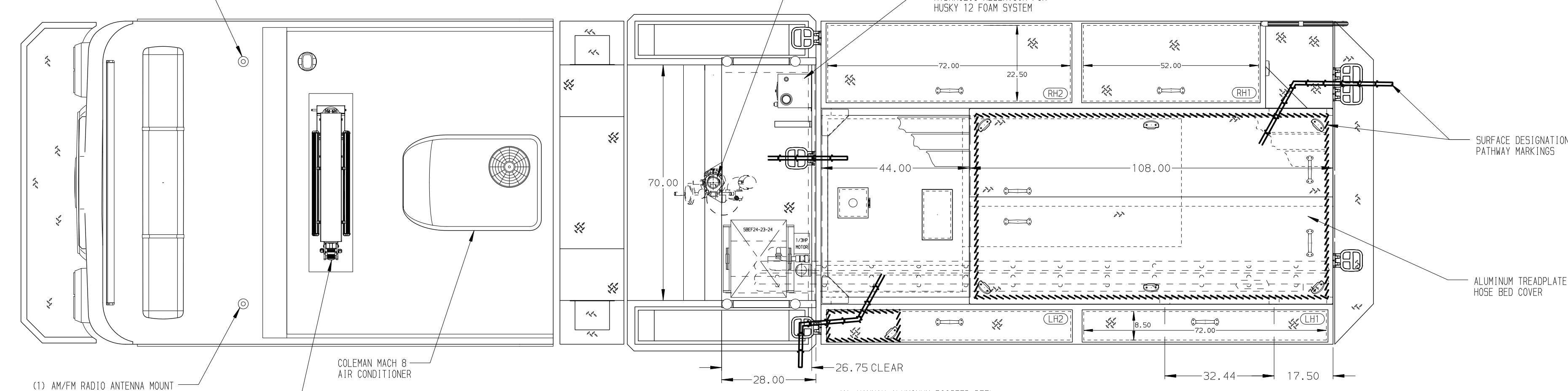
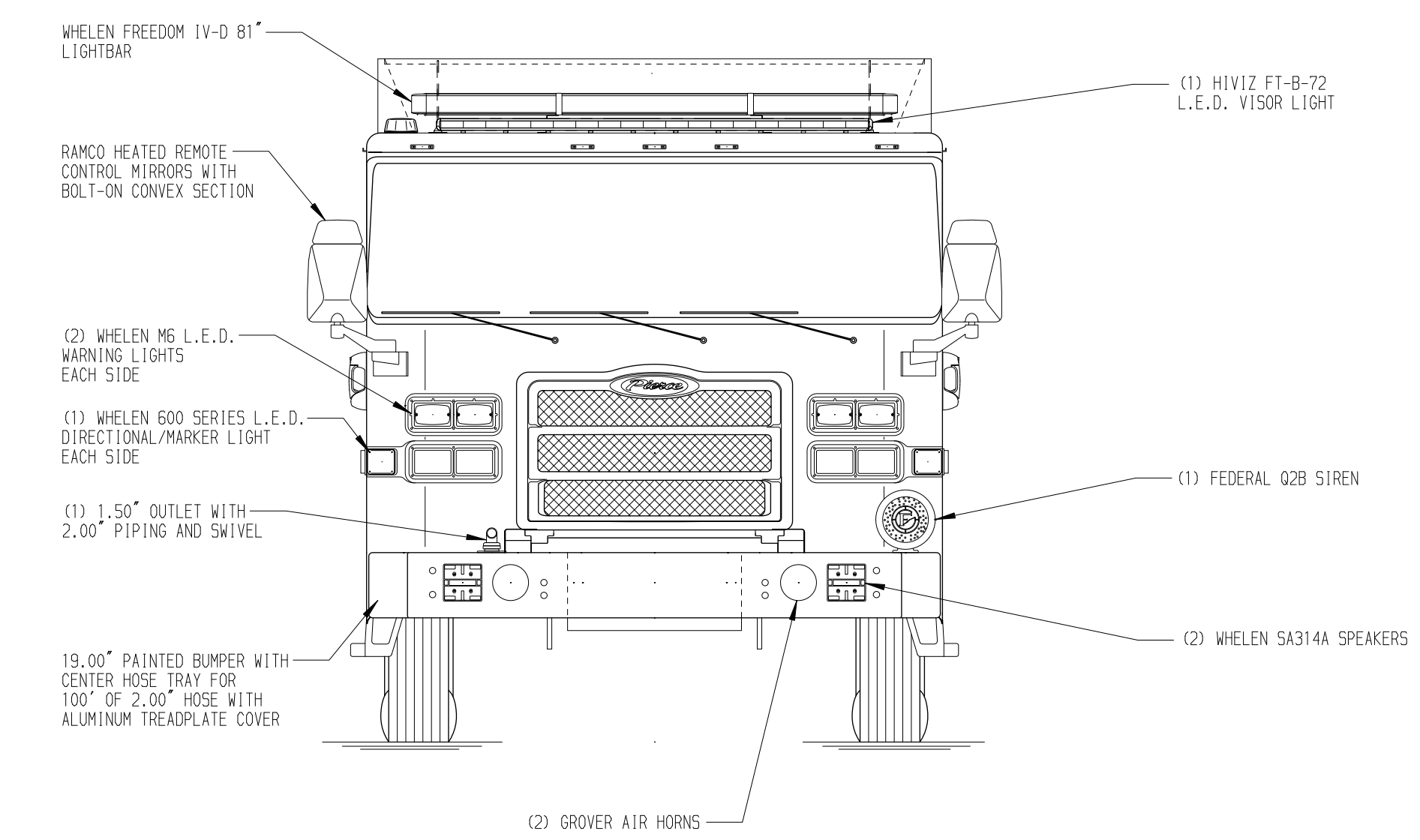
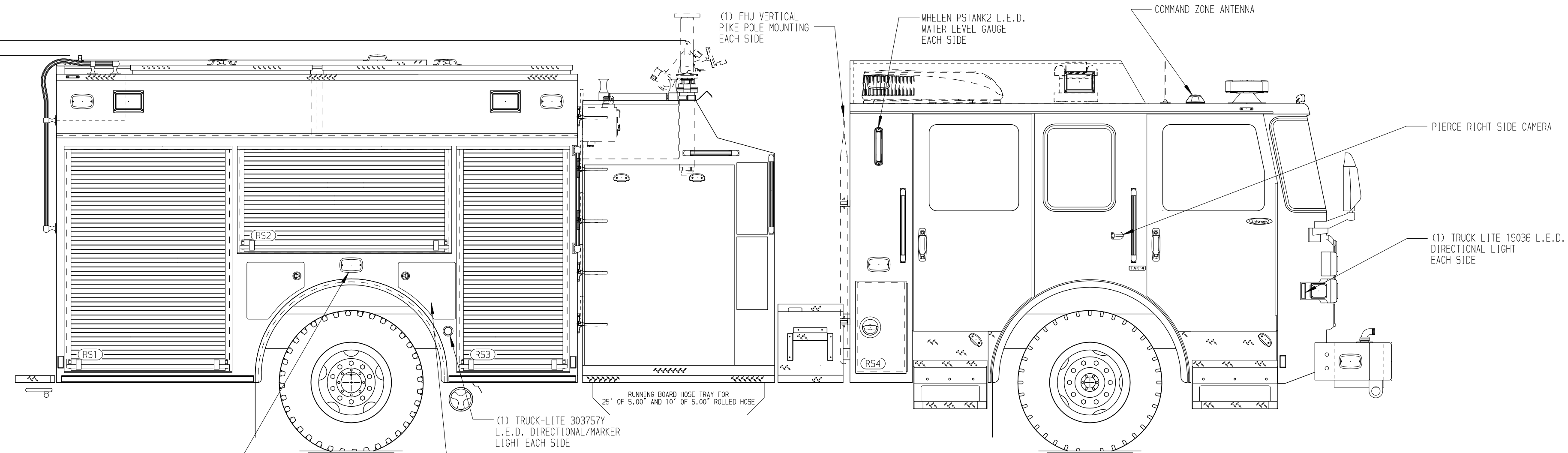
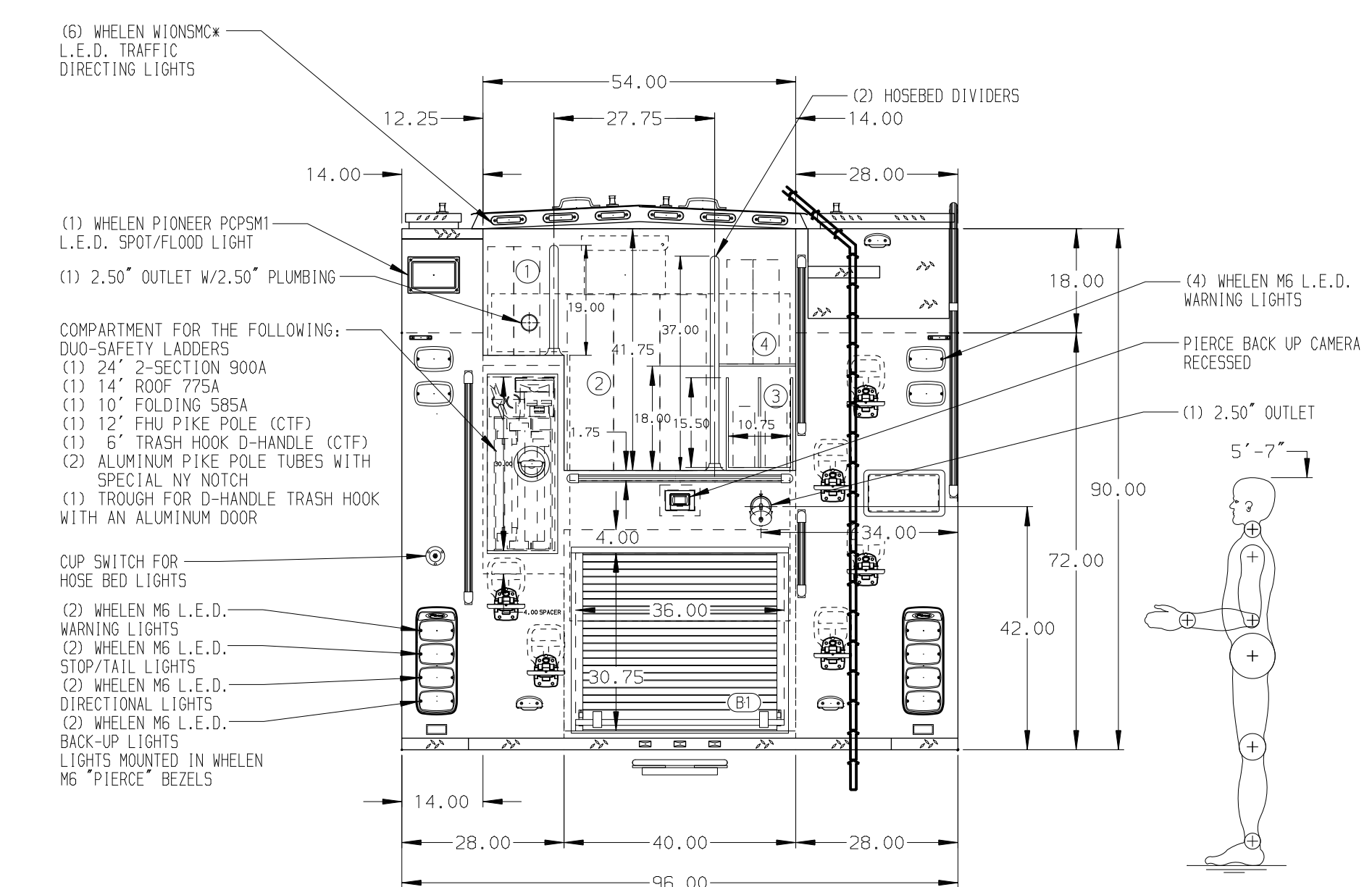
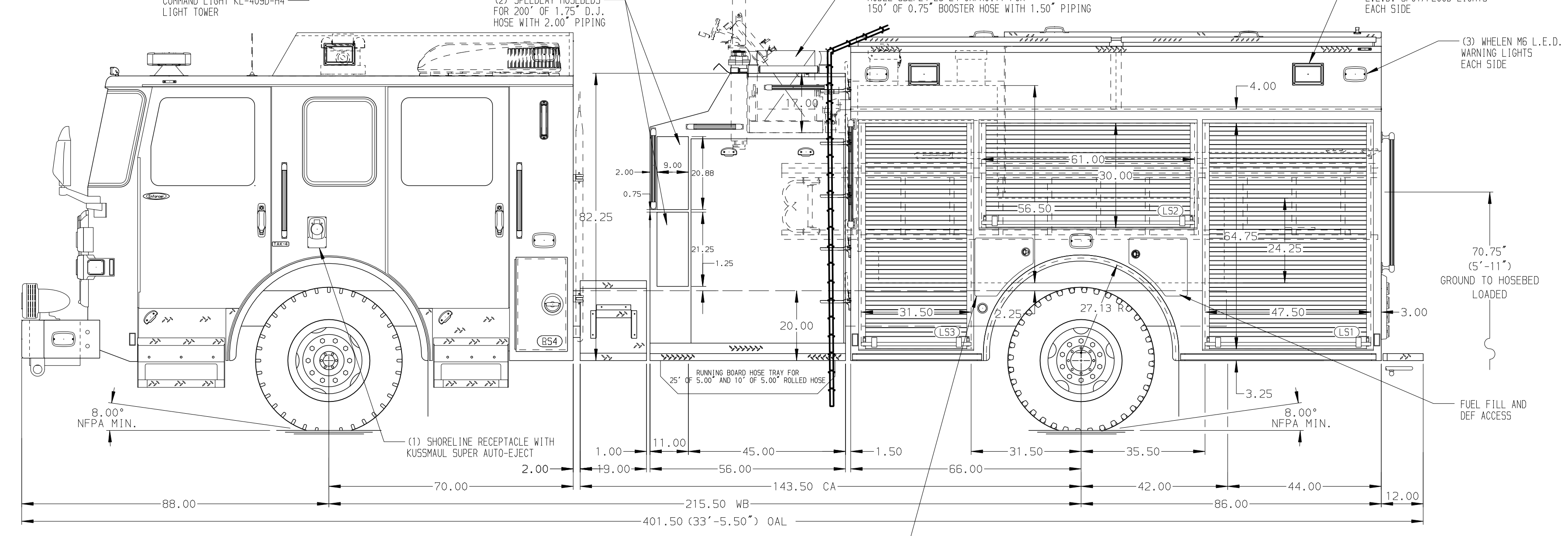


122.50
(10'-2")
APPROX
O.A.H.

121.00
(10'-1")
APPROX
O.A.H.



- HOSEBED CAPACITIES
- ① 400' OF 2.50" DUP HOSE
 - ② 1000' OF 5.00" LGH HOSE
 - ③ (2) 100' OF 2.00" HOSE PACKS IN A POLY TRAY
 - ④ 375' OF 2.50" DUP HOSE



ALUMINUM BODY

NOTE
DIMENSIONS SHOWN ARE APPROXIMATE AND ARE SUBJECT TO MINOR DEVIATIONS AS MAY OCCUR OR BE NECESSARY IN CONSTRUCTION.
MINOR DETAILS NOT SHOWN.

1. WHEEL CHOCKS AND MOUNTING BRACKETS PROVIDED BY CUSTOMER
2. AIR INLET/OUTLET MILTON D FEMALE FITTING AT DRIVER'S SIDE PUMP PANEL
3. REMOTE AIR TANK DRAIN LOCATED UNDER L53
4. BATTERY CHARGER LOCATED BEHIND DRIVER'S SEAT
5. BATTERY CHARGER INDICATOR LOCATED ON DRIVER'S SEAT RISER
6. DUAL L.E.D. LIGHT STRIPS LOCATED BELOW HOSE BED COVER
7. DRIP PAN GUARD FOR ROLL-UP DOOR LOCATED ON ALL COMPARTMENTS WITH ROLL UP DOORS
8. DUAL L.E.D. LIGHT STRIPS ON EACH SIDE OF ALL COMPARTMENTS WITH ROLL UP DOORS
9. L.E.D. LIGHT STRIPS IN HATCH COMPARTMENTS
10. ONE FULL WIDTH/DEPTH ADJUSTABLE SHELF IN COMPARTMENTS LS2, LS3, AND RS1; THREE IN LS1
11. ONE SLIDE-OUT ADJUSTABLE TRAY IN COMPARTMENT L53
12. CABLE RELEASE LATCH WITH SINGLE HAND OPERATION FOR TRAY IN COMPARTMENTS RS1 AND RS2
13. ONE TILLY SLIDE-OUT ADJUSTABLE TRAY IN COMPARTMENTS RS1 AND RS2
14. ONE FLOOR MOUNTED SLIDE-OUT FULL WIDTH/FULL DEPTH TRAY IN COMPARTMENTS LS1, LS3, AND RS1
15. ONE FLOOR MOUNTED SLIDE-OUT TRAY IN COMPARTMENT B1
16. TWO SLIDE-OUT ALUMINUM TOOL BOARDS IN COMPARTMENT RS3
17. ONE VERTICAL DIVIDER IN COMPARTMENT LH2
18. PARTITION BETWEEN COMPARTMENTS LS1/B1 AND RS1/B1
19. ONE 120V DUPLEX RECEPTACLE LOCATED IN LS1, RS1, AND CARGO AREA ABOVE PUMP, TWO IN CAB

		JOB NO.	37385
		SCALE	DATE
TITLE 1500-D-525P, 500G WATER W/25G FOAM CELL 152" BODY, (2) SPEEDLAYS, DELUGE, HUSKY 12		DRAWN BY	14SEP21
		CHECKED BY	14SEP21
FOR DENTON FIRE DEPARTMENT DENTON, TEXAS		SHEET SIZE	SHEET NO.
		DWG NO.	1 OF 1

REV	DATE	BY	CH	ENFORCER
08DEC21	MMF	CHR	MAKE	
10NOV21	MMF	COS	PIERCE	
03NOV21	COL	CHR	MODEL	

37385AD