

**PUMPER
BODY**

Long Aluminum 2nd Gen Pumper

CHASSIS

Velocity Chassis (Big Block)

**CHASSIS
AXLE, FRONT, CUSTOM**
24,000 Lb TAK-4 Axle

AXLE, REAR
31,000 Lb Meritor Axle

ENGINE
565 HP Cummins X15 Engine

TRANSMISSION
Allison 5th Gen, 4000 EVS P

BUMPER
13" Extended Stainless Steel

CAB
7010 Velocity FR Cab

**BODY
WATER TANK**

725 Gallon New York Style Water Tank
COMPT, PUMPER, REAR
30.75" FF RollUp Rear Compt

COMPT, PUMPER, LEFT SIDE
161" RollUp Full Height Front & Rear FDLR

COMPT, PUMPER, RIGHT SIDE
161" RollUp Full Height Front & Rear FDLR

**FIRE SUPPRESSION
PUMPHOUSE**

52" Control Zone Side Mount

PUMP

1500 GPM Waterous CSU

CROSSLAYS, 1.50"
(2) 1.50" Standard Capacity

CROSSLAYS, 2.50"
2.50" Crosslay Not Required

SPEEDLAYS
Speedlays Not Required

GENERATOR
Generator Not Required

Foam System
Husky 12 Single Agent Foam System

Foam Cell
25 Gallon Foam Cell, Reduced Water

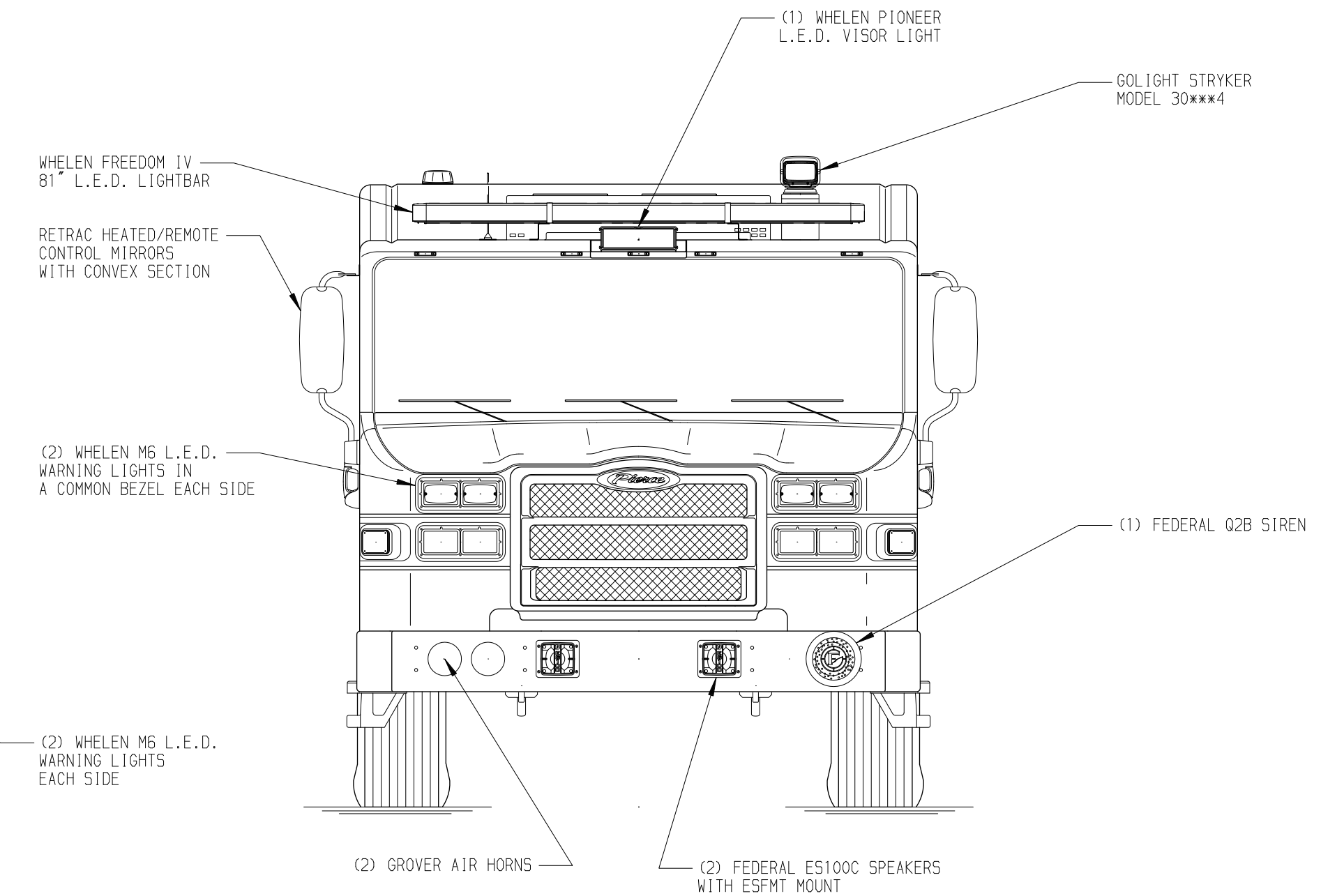
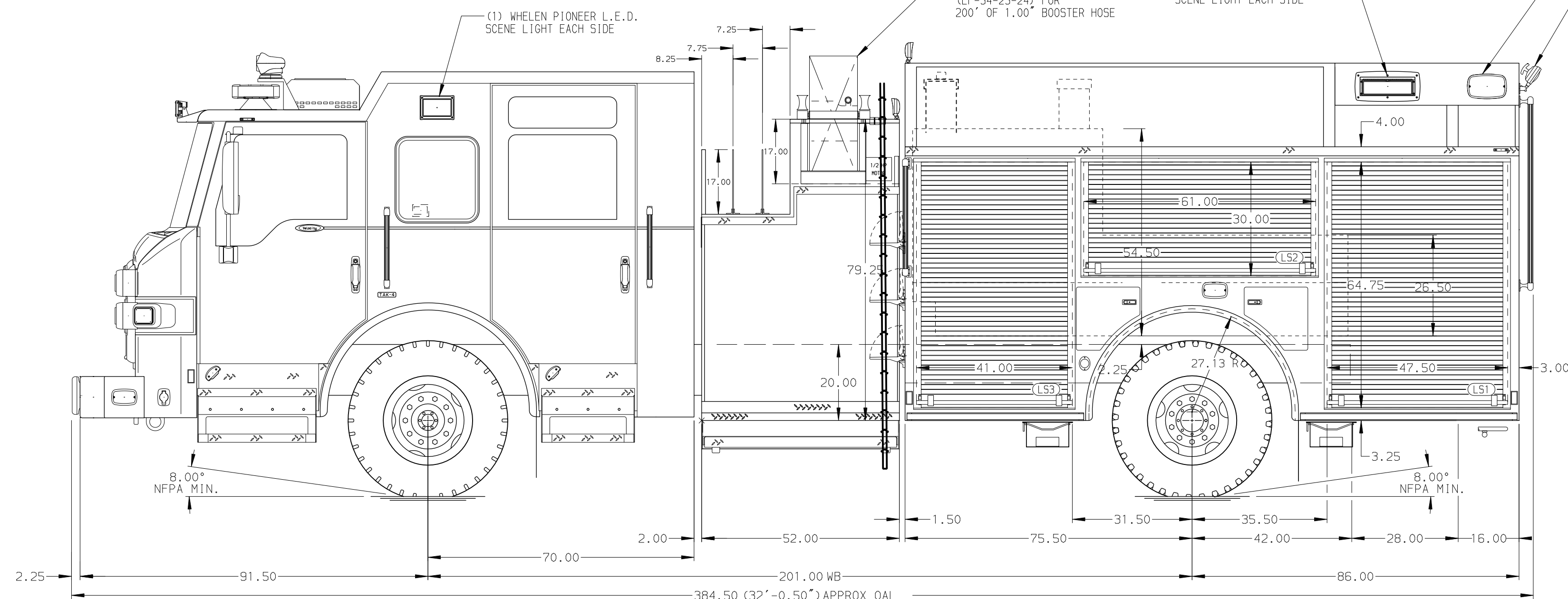
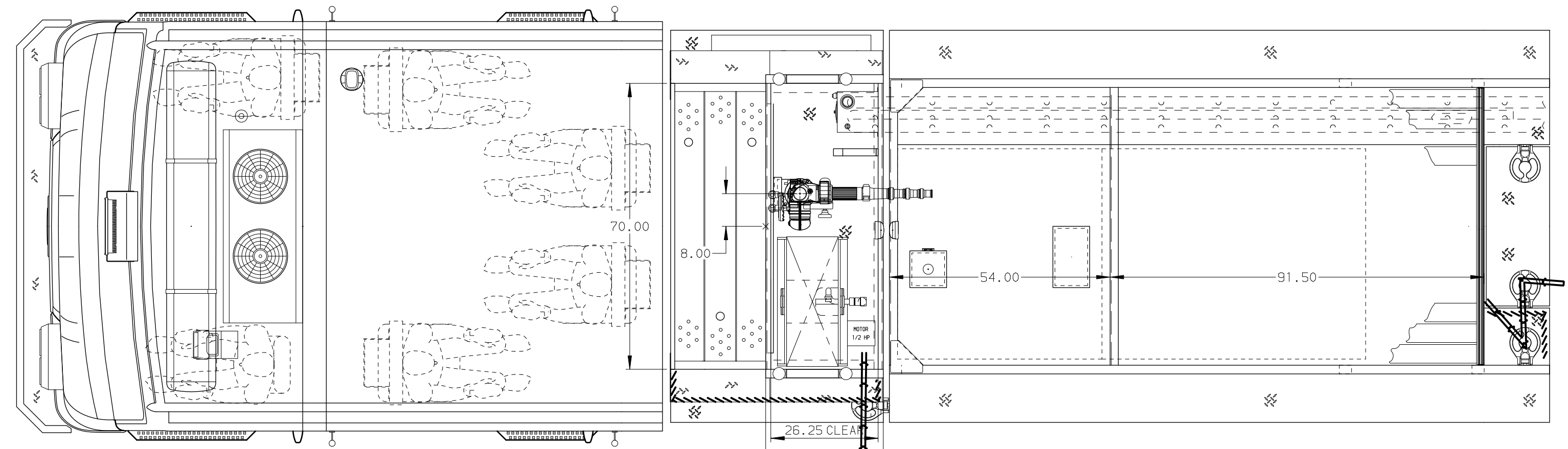
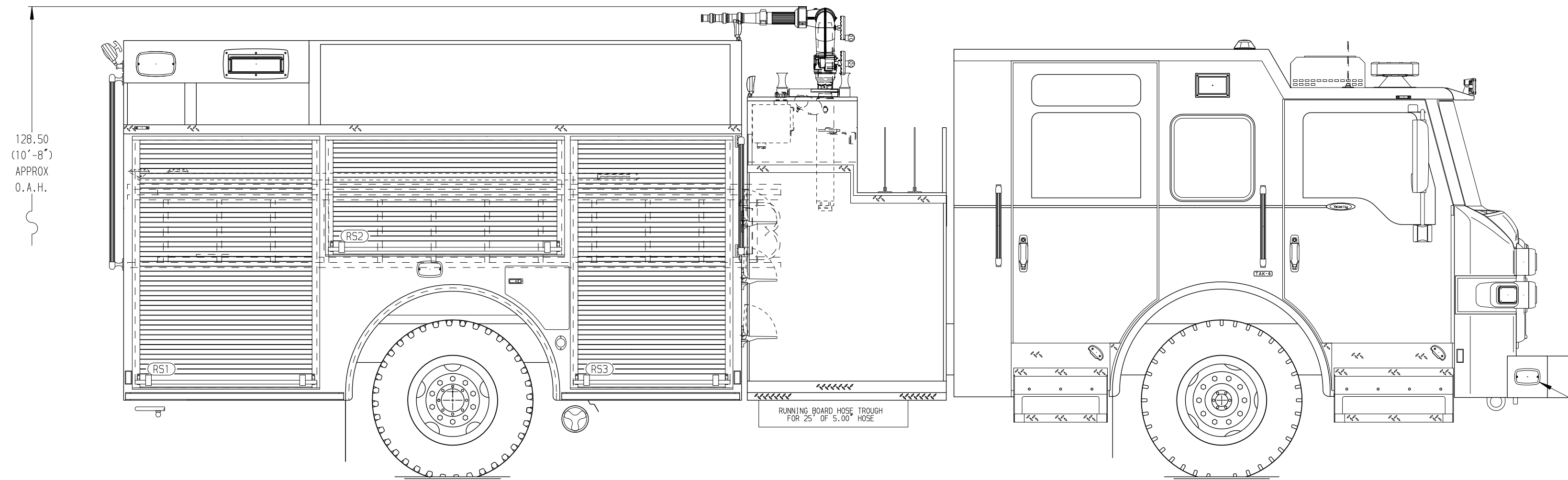
Side Roll and Frontal Impact Protection

NOTE

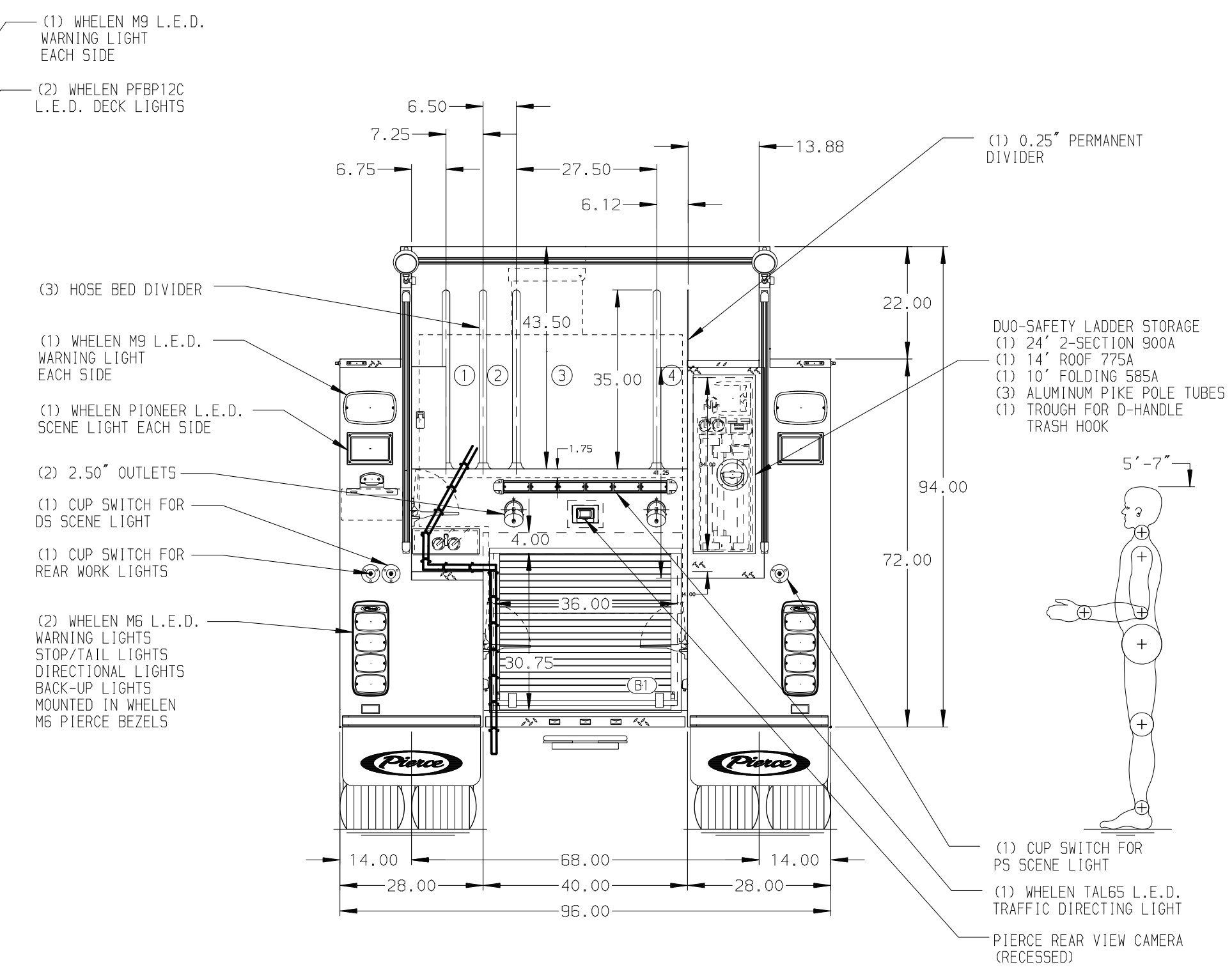
DIMENSIONS SHOWN ARE APPROXIMATE AND ARE SUBJECT TO MINOR DEVIATIONS AS MAY OCCUR OR BE NECESSARY IN CONSTRUCTION. MINOR DETAILS NOT SHOWN.

- SHORELINE RECEPTACLE WITH KUSSMAUL SUPER AUTO-EJECT LOCATED ON DRIVER SIDE OF THE CAB
- AIR INLET WITH DISCONNECT COUPLING IN THE DRIVER SIDE STEPWELL
- AIR OUTLET WITH SHUT OFF VALVE LOCATED DRIVERS SIDE PUMP PANEL
- BATTERY CHARGER LOCATED IN COMPARTMENT PER SHIP ORDER
- BATTERY CHARGE INDICATOR LOCATED DRIVERS SIDE THROUGH WINDOW

128.50
(10'-8")
APPROX
O.A.H.



HOSEBED CAPACITY	
BED 1	300' OF 2.50 D.J. POLY HOSE
BED 2	300' OF 2.50 D.J. POLY HOSE
BED 3	700' OF 5.00" D.J. POLY HOSE
BED 4	200' OF 2.50" D.J. POLY HOSE



		JOB NO.	37397 01-04
		SCALE	DATE
TITLE	Pierce Pumper Approval Drawing	DRAWN BY	MMF
FOR	Las Vegas Fire and Rescue	CHECKED BY	COL
MODEL	PIERCE	SHEET SIZE	SHEET NO.
VELOCITY	FR	D	1 OF 2
DWG NO.	37397AD-SH1		