

PUMPER BODY

Long Aluminum 2nd Gen Pumper

CHASSIS

Sober FR Chassis

CHASSIS AXLE, FRONT, CUSTOM
20,000 Lb Dana Axle

AXLE, REAR
27,000 Lb Meritor Axle

ENGINE
450 HP Cummins L9 Engine

TRANSMISSION
Allison 5th Gen, 3000 EVS P

BUMPER
19" Extended Stainless Steel

CAB

7010 Sober FR Cab

BODY WATER TANK

980 Gallon Poly Water Tank

COMPT, PUMPER, REAR
44.50" FF RollUp Rear Compt

COMPT, PUMPER, LEFT SIDE
161" RollUp Full Height Front & Rear FDLR

COMPT, PUMPER, RIGHT SIDE
161" RollUp Full Height Front & Rear FDLR

FIRE SUPPRESSION PUMPHOUSE

52" Control Zone Side Mount

PUMP

1500 GPM Waterous CSU

CROSSLAYS, 1.50"
(2) 1.50" Standard Capacity

CROSSLAYS, 2.50"
(1) 2.50" Standard Capacity

SPEEDLAYS

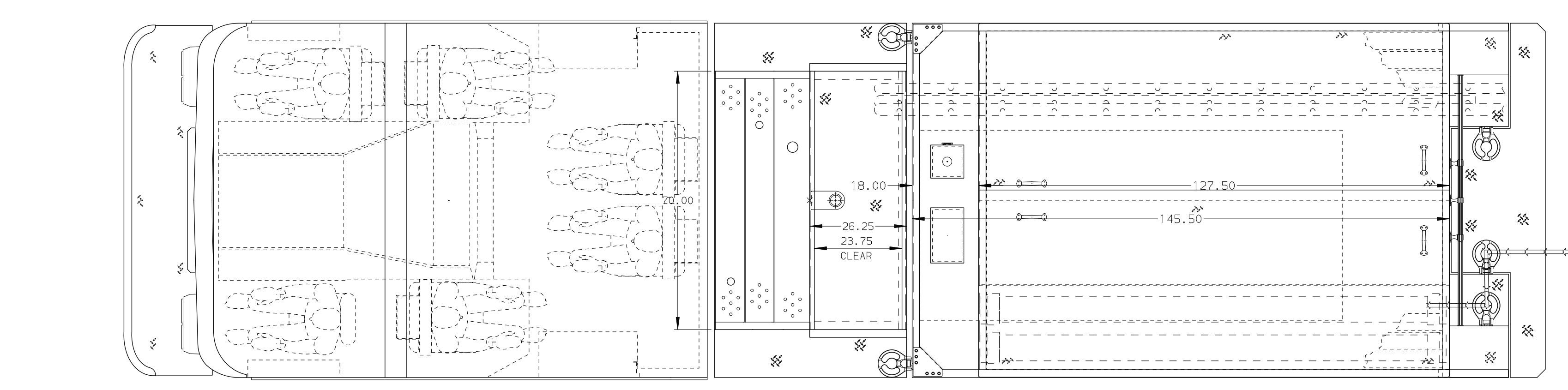
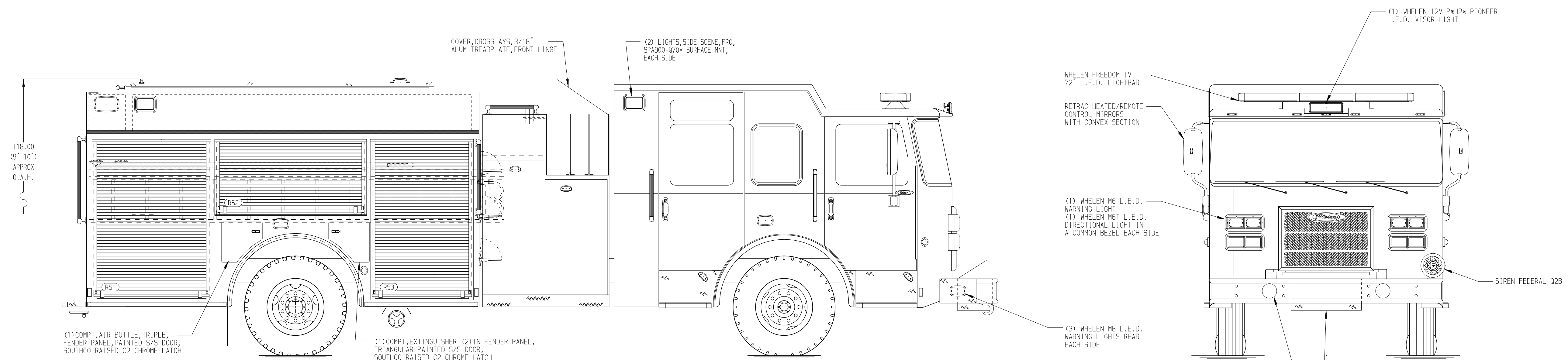
Speedlays Not Required

GENERATOR

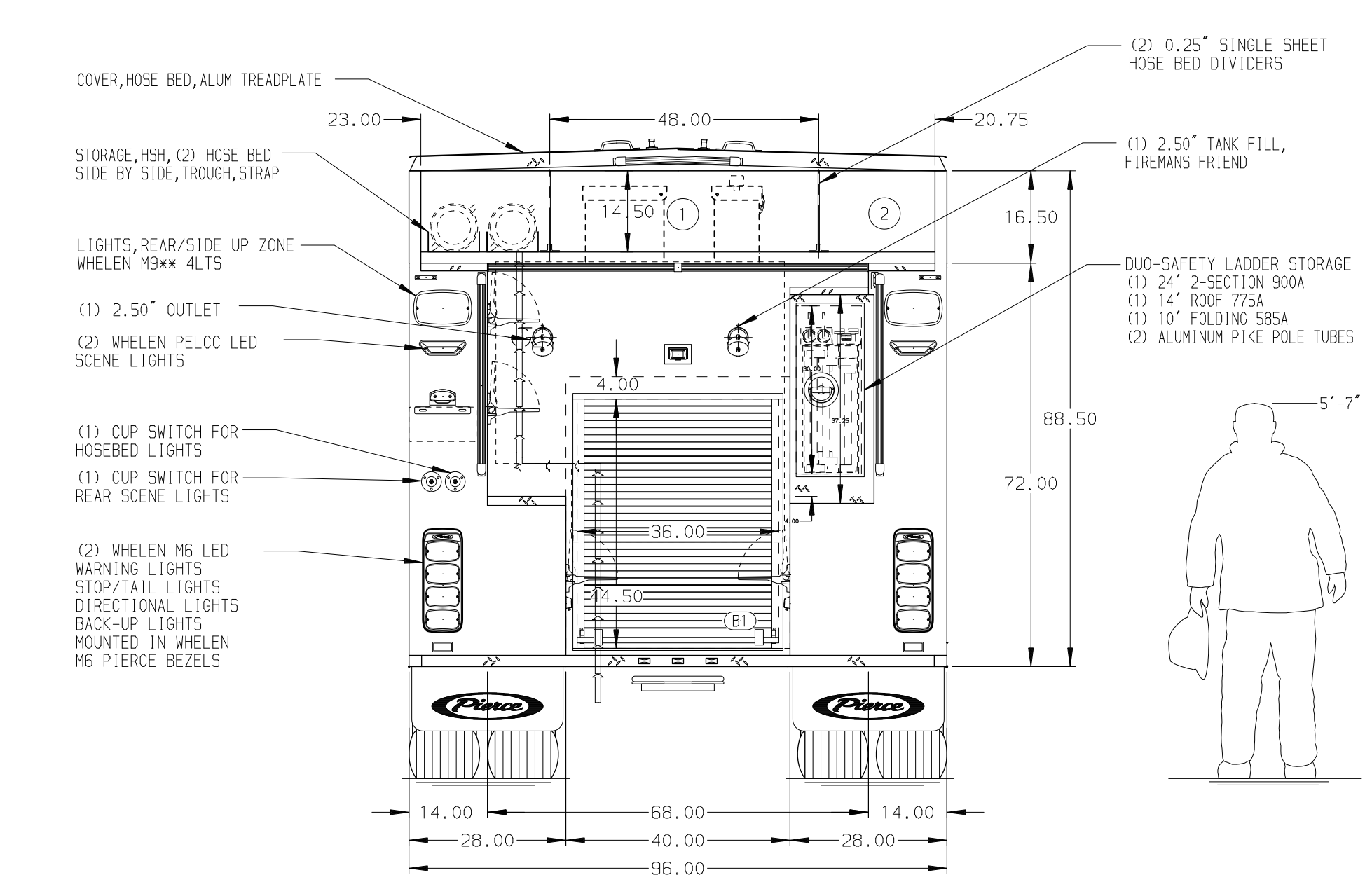
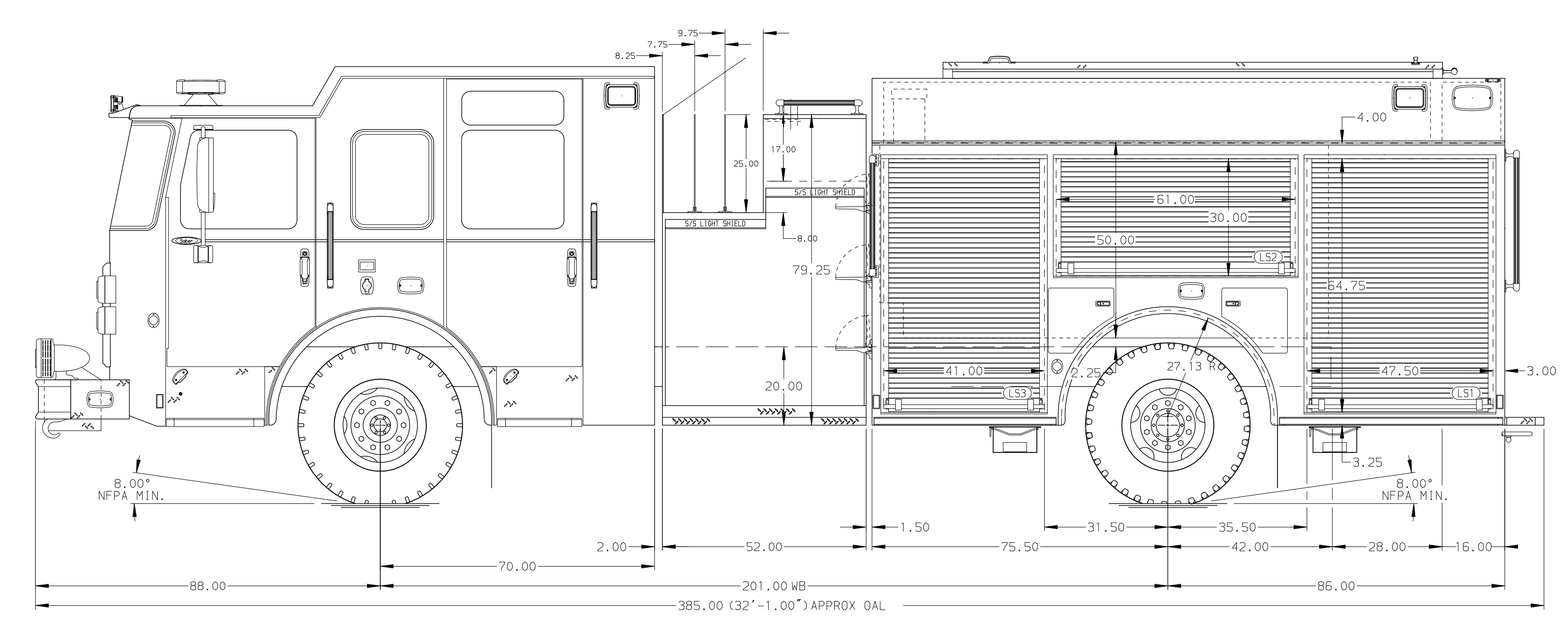
Generator Not Required

Foam System
FoamPro 1600, (Single Agent)

Foam Cell
20 Gallon Foam Cell, Reduced Water



HOSEBED CAPACITY	
BED 1	1000' OF 5.00" D.J. POLY HOSE
BED 2	600' OF 2.50" D.J. POLY HOSE



NOTE
DIMENSIONS SHOWN ARE APPROXIMATE AND ARE SUBJECT TO MINOR DEVIATIONS AS MAY OCCUR OR BE NECESSARY IN CONSTRUCTION. MINOR DETAILS NOT SHOWN.

- ONE 1.50 OUTLET WITH 2.00 PIPING AND SHIVEL LOCATED IN CENTER BUMPER TRAY
- SHORELINE RECEPTACLE WITH KUSSMAUL SUPER AUTO-EJECT LOCATED ON DRIVER SIDE OF THE CAB
- AIR INLET WITH DISCONNECT COUPLING IN THE DRIVER SIDE STEPWELL
- BATTERY CHARGER LOCATED IN COMPARTMENT PER SHOP ORDER
- BATTERY CHARGE INDICATOR LOCATED ON THE DRIVER SIDE SEAT RISER
- ADJUSTABLE SHELVES IN COMPARTMENTS PER SHOP ORDER
- ONE FLOOR MOUNTED SLIDE-OUT TRAY IN COMPARTMENT PER SHOP ORDER
- MOUNTING PROVISIONS FOR FRONT INLET
- MOUNTING PROVISIONS FOR WILL BURT NIGH SCAN POWERLITE NS 3.0 10" ON CAB

REV	DATE	BY	CH	MODEL
17JAN22	JLA	CAG		PIERCE
				SABER FR

		JOB NO.	37430
		SCALE	DATE
TITLE	Pierce Pumper Approval Drawing		
FOR	BAY COUNTY BOARD OF COUNTY COMMISSIONERS SOUTHPORT, FLORIDA		
DWG NO.	37430AD		
	CHECKED BY	CGA	03NOV21
	DRAWN BY	JLA	03NOV21
	SHEET SIZE	D	SHEET NO. 1 OF 1