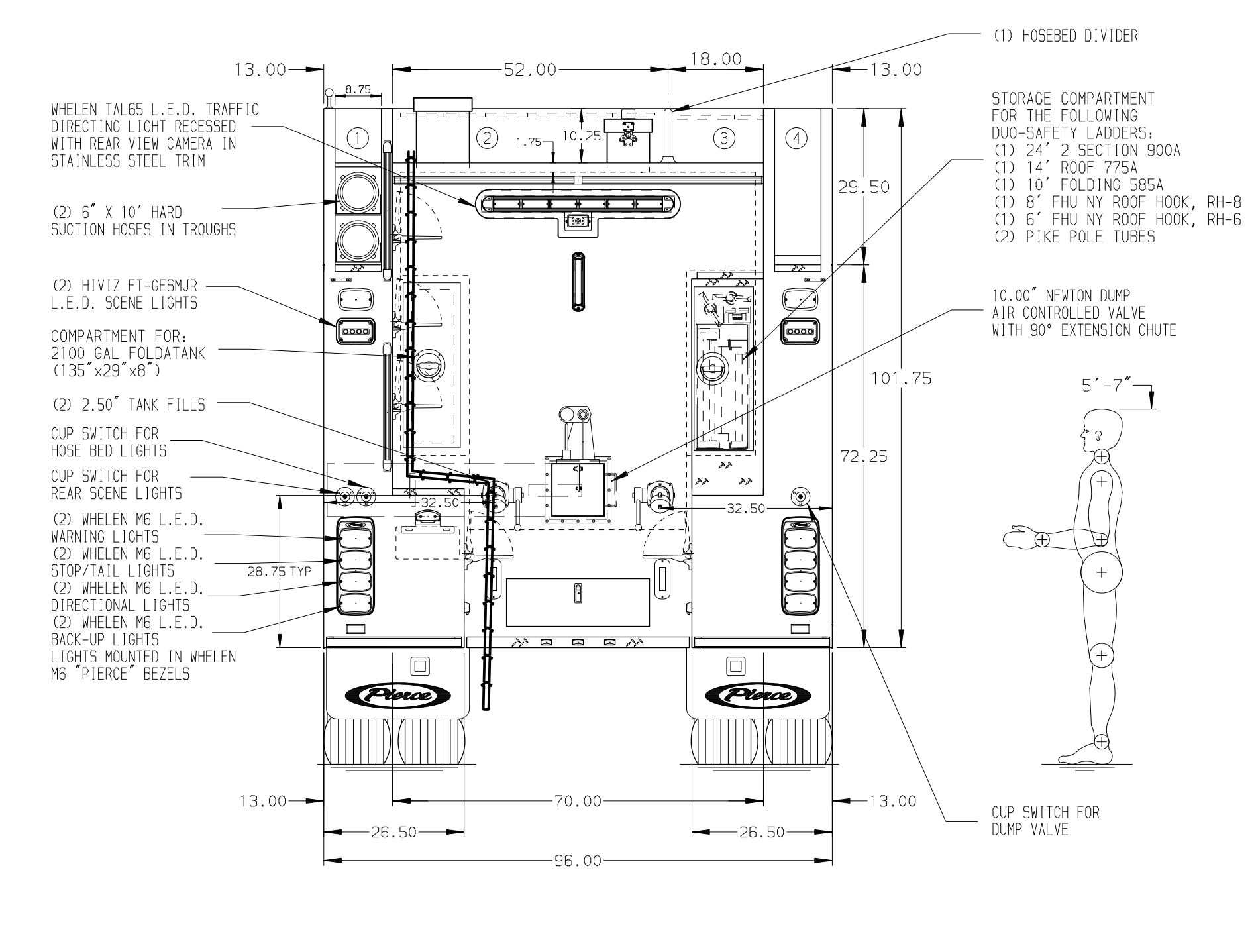
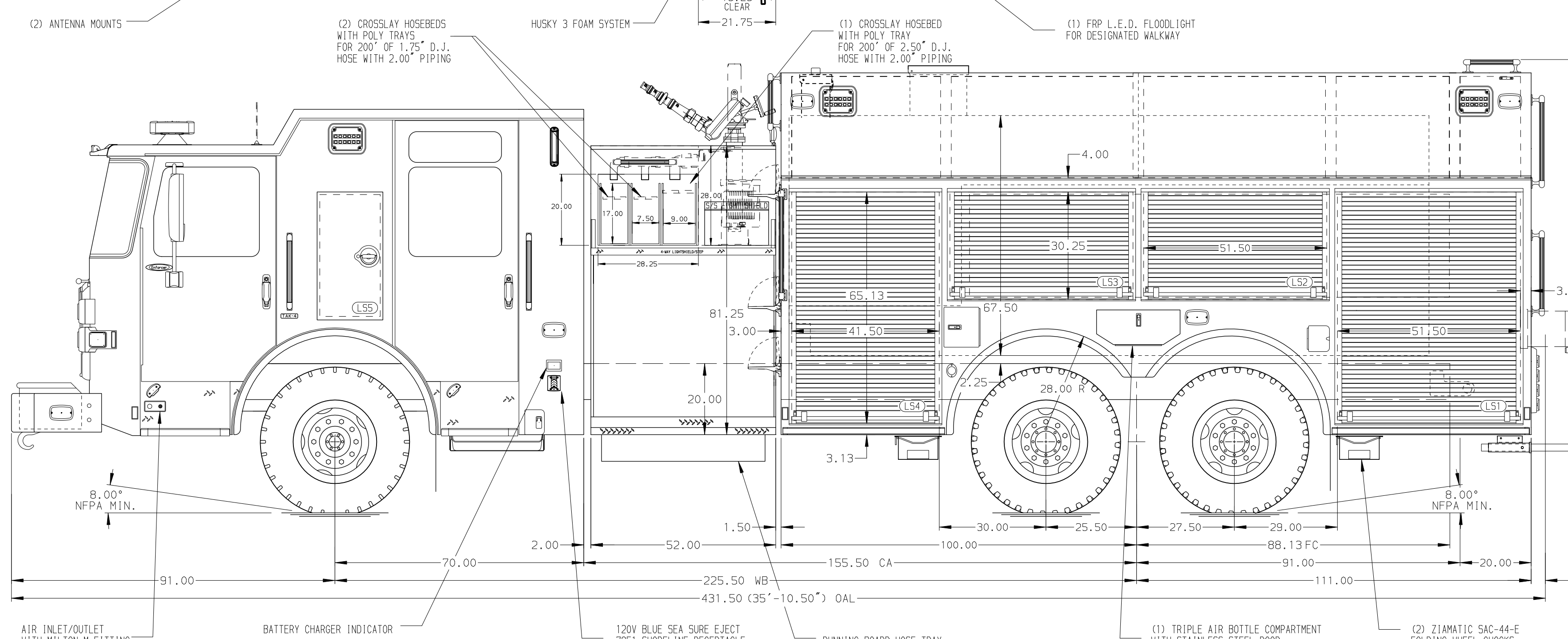


- HOSEBED CAPACITIES
- ① - OPEN
 - ② - 1000' OF 5.00\"/>



ALUMINUM BODY

SIDE ROLL AND FRONTAL IMPACT PROTECTION

NOTE
DIMENSIONS SHOWN ARE APPROXIMATE AND ARE SUBJECT TO MINOR DEVIATIONS AS MAY OCCUR OR BE NECESSARY IN CONSTRUCTION. MINOR DETAILS NOT SHOWN.

1. PACCAR DEF TANK MOUNTED UNDER CAB ON THE DRIVER'S SIDE
2. BATTERY CHARGER LOCATED PER SHOP ORDER
3. FIVE FULL WIDTH/DEPTH ADJUSTABLE SHELVES LOCATED PER SHOP ORDER
4. FOUR FLOOR MOUNTED SLIDE-OUT TRAYS LOCATED PER SHOP ORDER
5. TWO SWING-OUT TOOL BOARDS WITH PEGBOARD PATTERN LOCATED PER SHOP ORDER
6. HERCULES 200 CFM COMPRESSED AIR FOAM SYSTEM

REV	DATE	BY	CH	ENFORCER
200CT22	JJB	CHR		
02SEP22	JJB	WKL		
23JUN22	JJB	WKL		

		JOB NO.	37473
		SCALE	DATE
TITLE 2000-D-2330P, 2300G WATER, 30G FOAM, 211\"/>	FOR WILSON COUNTY ESD 2 FLORESVILLE, TEXAS	DRAWN BY	JJB
		CHECKED BY	WKL
		SHEET SIZE	SHEET NO.
DWG NO.	37473AD	D	1 OF 1