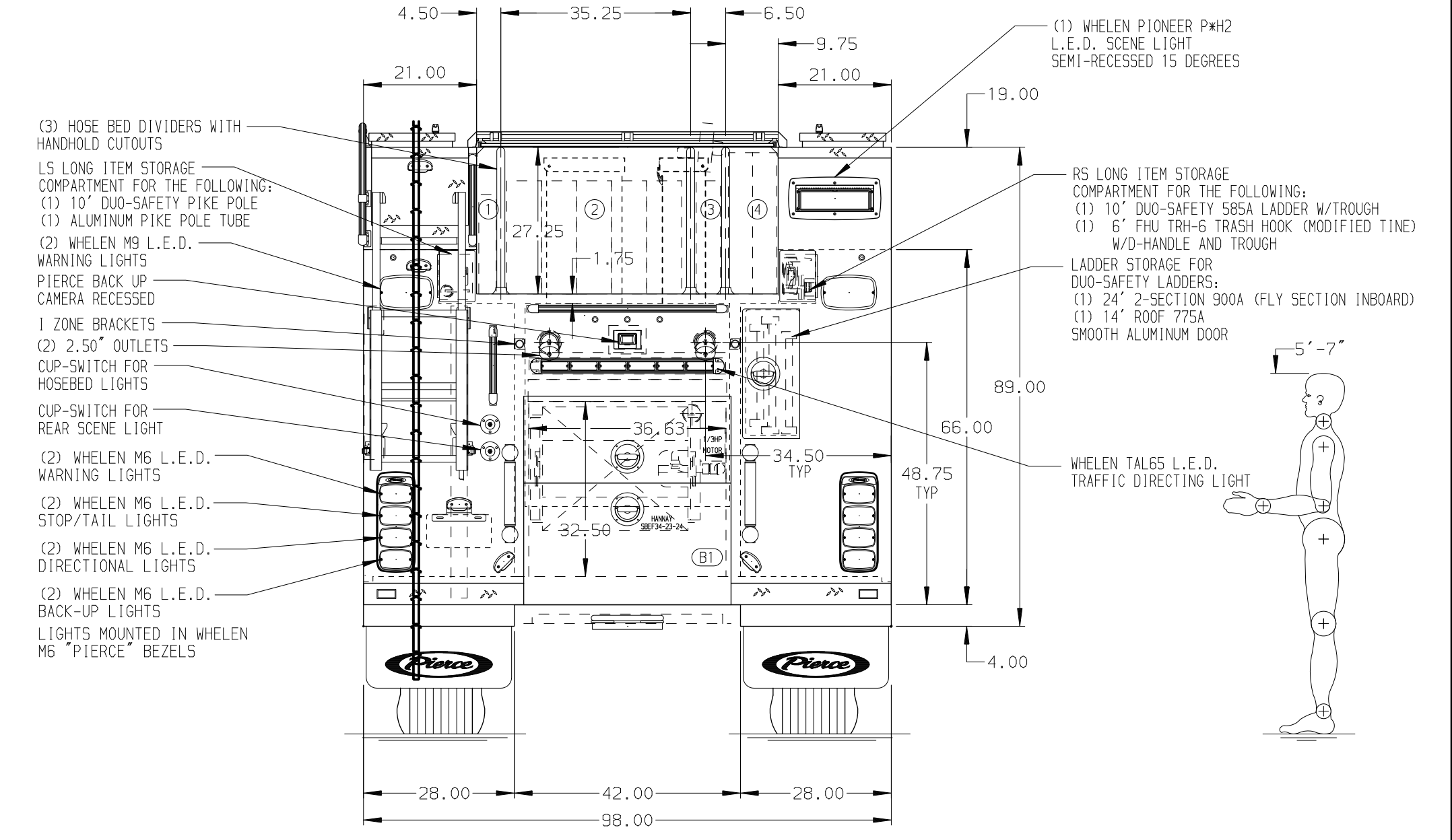
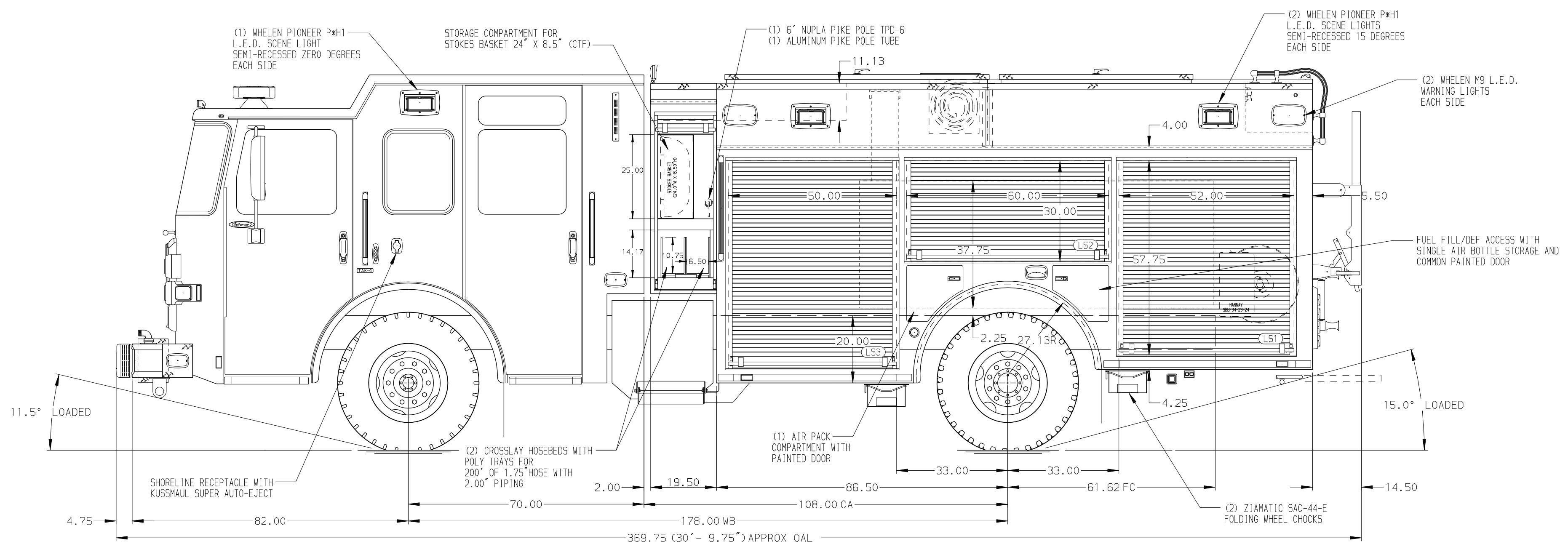


HOSEBED CAPACITIES

| | |
|---|-----------------------|
| ① | - 200' OF 1.75" HOSE |
| ② | - 1000' OF 4.00" HOSE |
| ③ | - 200' OF 2.50" HOSE |
| ④ | - 500' OF 2.50" HOSE |



ALUMINUM BODY

SIDE ROLL AND FRONTAL IMPACT PROTECTION

NOTE
DIMENSIONS SHOWN ARE APPROXIMATE AND ARE SUBJECT TO MINOR DEVIATIONS AS MAY OCCUR OR BE NECESSARY IN CONSTRUCTION.
MINOR DETAILS NOT SHOWN.

- AIR INLET/OUTLET WITH DISCONNECT FITTING LOCATED AT PUMP PANEL.
- BATTERY CHARGER LOCATED PER ORDER.
- BATTERY CHARGE INDICATOR LOCATED ON DRIVER'S SEAT RISER
- JUMPER STUDS AT DRIVER'S SIDE CAB STEP
- DUAL L.E.D. LIGHT STRIPS LOCATED IN HOSE BED
- EIGHT ELASTIC PULL STRAP FOR DOOR ON COMPARTMENTS LOCATED PER ORDER
- DUAL L.E.D. LIGHT STRIPS LOCATED IN COMPARTMENT DOORS LOCATED PER ORDER
- L.E.D. LIGHT STRIPS LOCATED IN HATCH COMPARTMENTS PER ORDER
- TEN ADJUSTABLE FULL WIDTH/DEPTH SHELVES LOCATED PER ORDER
- ONE ADJUSTABLE SLIDE-OUT TRAY LOCATED PER ORDER
- TWO FLOOR MOUNTED SLIDE-OUT TRAYS LOCATED PER ORDER
- ONE ALUMINUM TOOLBOARD LOCATED PER SHOP ORDER
- ONE ALUMINUM SWING-OUT TOOLBOARD LOCATED PER SHOP ORDER
- ONE VERTICAL BOLT-IN PARTITION BETWEEN COMPARTMENTS L51/B1 & RS1/B1
- ONE VERTICAL PARTITION (SPECIAL HEIGHT) LOCATED PER SHOP ORDER
- FOAMPRO 2001 FOAM SYSTEM
- ONE HANWAY ALUMINUM BOOSTER REEL WITH CAPACITY FOR 150' OF 1.00" HOSE LOCATED IN B1 (SBEF34-23-24)
- KUSSMAUL INVERTER LOCATED PER ORDER
- CIRCUIT BREAKER PANEL LOCATED PER ORDER
- THREE 20A/120V RECEPTACLES LOCATED PER ORDER

| CUSTOMER APPROVAL | | | |
|-------------------|---------------------------------------------------|------------------------------------|---------|
| APPROVED BY: | | | |
| DATE: | | | |
| CHASSIS DATA | TITLE | FOR | DWG NO. |
| MAKE | 1500-D-530P, 500G WATER W/30G FOAM, 177" PUC T3 | MONTECITO FIRE PROTECTION DISTRICT | 37512AD |
| PIERCE | (2) CROSSLAYS, LADDERS THRU BODY, ROLLER HB COVER | SANTA BARBARA, CALIFORNIA | |
| MODEL | | | |
| ENFORCER | | | |
| REV | DATE | BY | CH |

Pierce MANUFACTURING INC.

JOB NO. 37512

SCALE 1:24 DATE

DRAWN BY SAM 19MAY22

CHECKED BY NPE 02JUN22

SHEET SIZE D SHEET NO. 1 OF 1