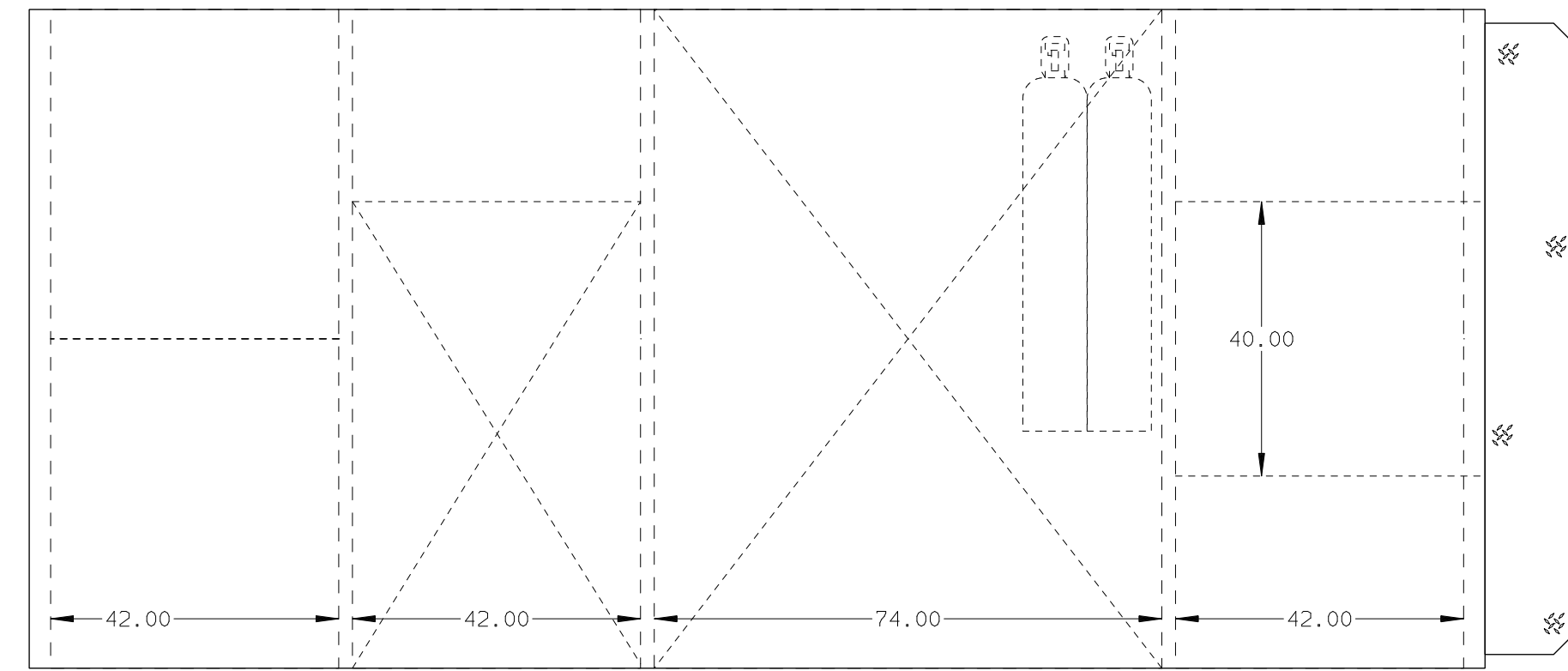
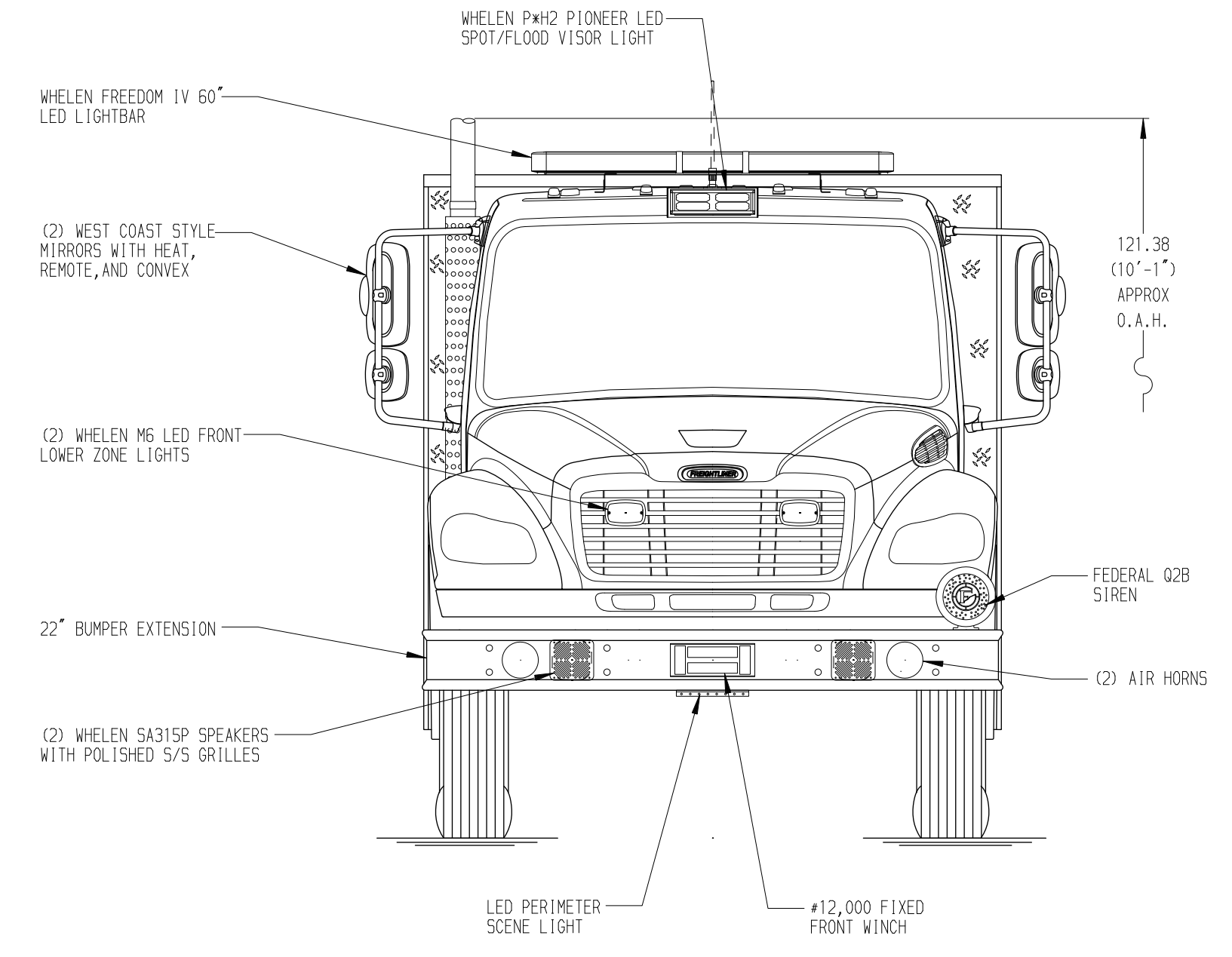
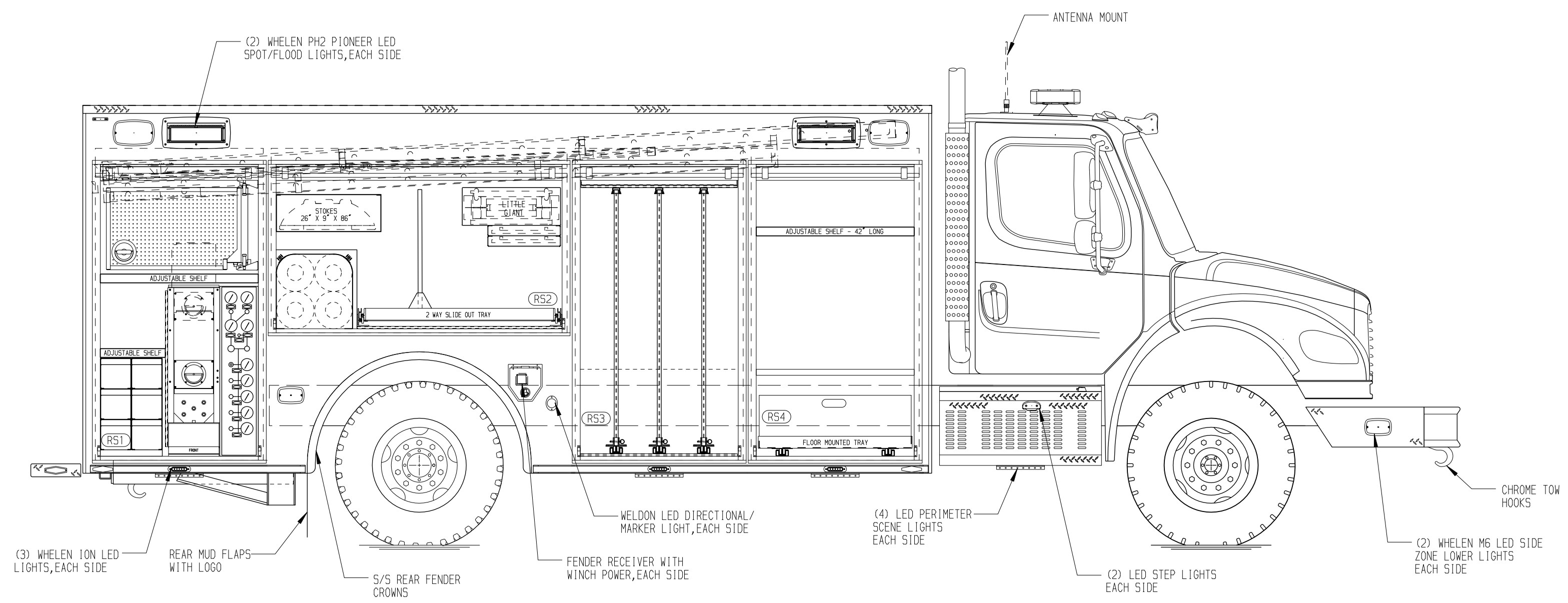
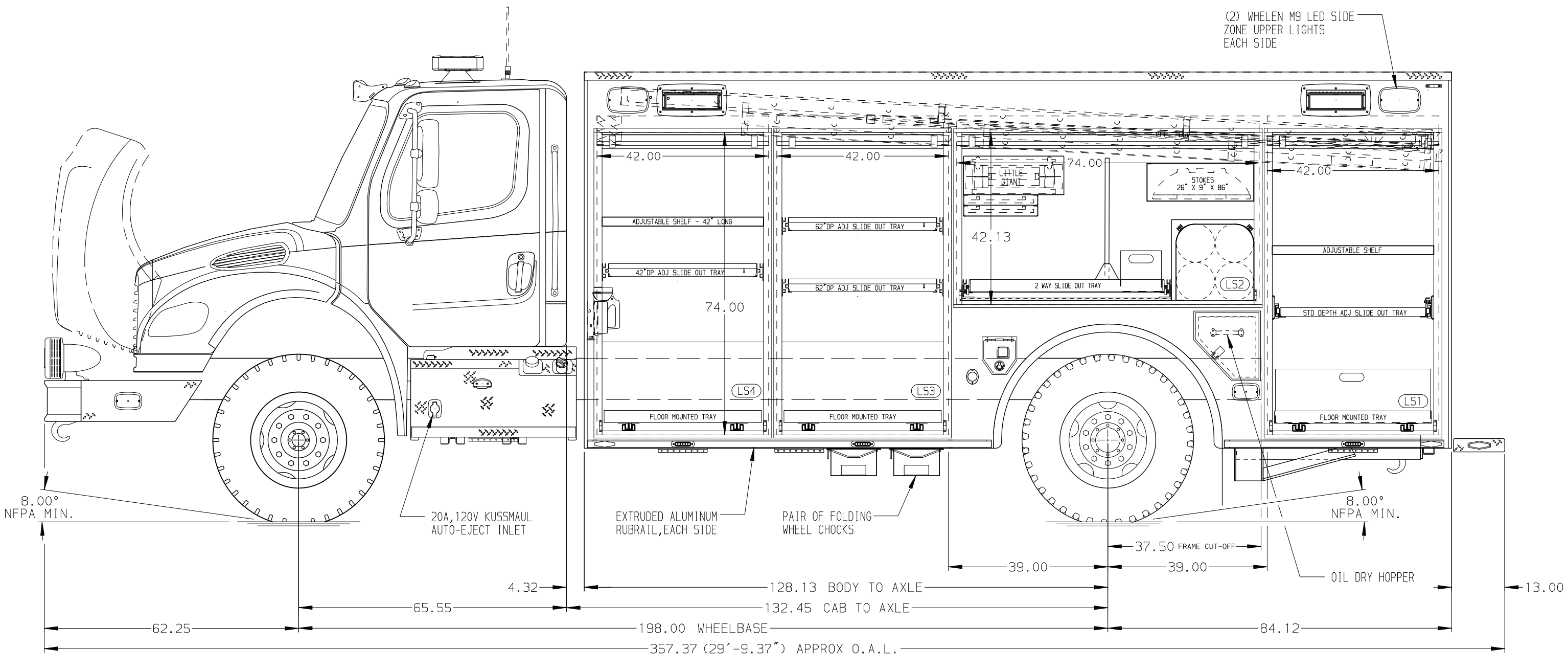


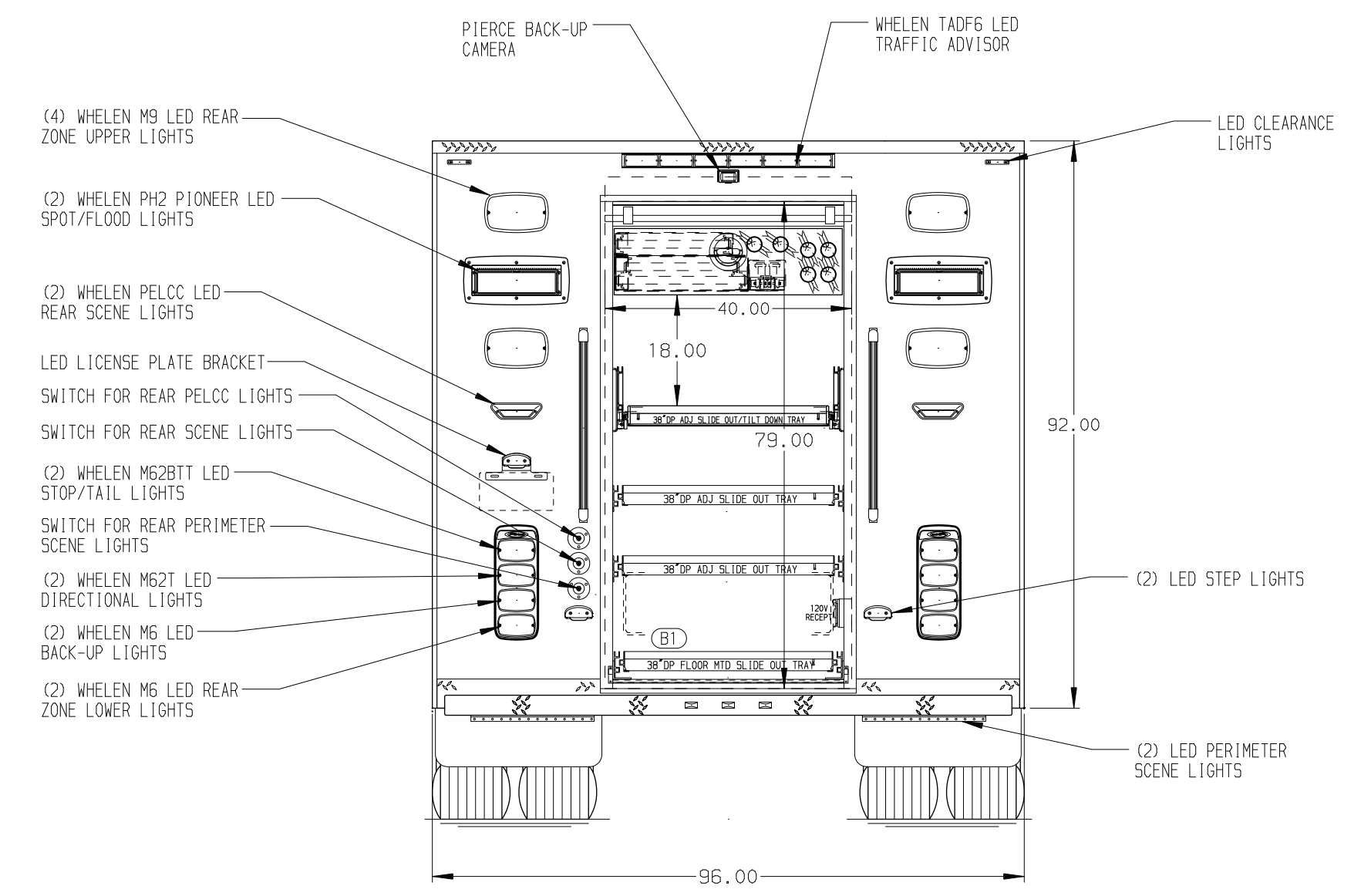
- RIGHT SIDE COMPARTMENTS CONTAIN THE FOLLOWING:**
- COMPARTMENT RS1 CONTAINS:**
- (1) RACK FOR 6 SCBA BOTTLES
 - (2) STD DEPTH ADJ SHELVES
 - (1) SWING OUT TOOLBOARD
 - (1) CASCADE SYSTEM CONTROL PANEL
 - (1) "SPACE SAVER" 2-BOTTLE FILL ENCLOSURE
- COMPARTMENT RS2 CONTAINS:**
- (1) RACK FOR 2 BACKBOARDS
 - (1) STOKES BASKET RACK
 - (1) 2-WAY FLOOR MTD SLIDE OUT TRAY WITH TOOLBOARD
 - (4) 6000 UN AIR STORAGE BOTTLES WITH COVER
 - (1) RACK FOR LITTLE GIANT LADDER
- COMPARTMENT RS3 CONTAINS:**
- (1) REAR WALL COMPARTMENT DIVIDER
 - (3) STD DEPTH ADJ SLIDE OUT TOOLBOARDS
- COMPARTMENT RS4 CONTAINS:**
- (1) POLY TOOL BOX
 - (1) REAR WALL COMPARTMENT DIVIDER
 - (1) HORIZONTAL FLOOR EXTENSION
 - (1) 1/2 DEPTH ADJ SHELF
 - (1) FLOOR MOUNTED TRAY



- REAR COMPARTMENT CONTAINS THE FOLLOWING:**
- COMPARTMENT B1 CONTAINS:**
- (1) 38" DP ADJ SLIDE OUT/TILT TRAY
 - (2) 38" DP ADJ SLIDE OUT TRAYS
 - (1) 38" DP FLOOR MOUNTED SLIDE OUT TRAY
 - (1) RACK FOR THE FOLLOWING:
 - (1) 24" 2-SECTION LADDER
 - (1) 16" ROOF LADDER
 - (1) 10" FOLDING LADDER
 - (6) PIKE POLES
 - (1) 15/20A, 120V DUPLEX RECEPTACLE



- LEFT SIDE COMPARTMENTS CONTAIN THE FOLLOWING:**
- COMPARTMENT LS1 CONTAINS:**
- (1) POLY TOOL BOX
 - (1) STD DEPTH ADJ SHELF
 - (1) STD DEPTH ADJ SLIDE OUT TRAY
 - (1) FLOOR MOUNTED TRAY
- COMPARTMENT LS2 CONTAINS:**
- (1) POLY TOOL BOX
 - (1) RACK FOR 2 BACKBOARDS
 - (1) STOKES BASKET RACK
 - (1) 2-WAY FLOOR MTD SLIDE OUT TRAY WITH TOOLBOARD
 - (4) 6000 UN AIR STORAGE BOTTLES WITH COVER
 - (1) RACK FOR LITTLE GIANT LADDER
- COMPARTMENT LS3 CONTAINS:**
- (2) 62" DP ADJ SLIDE OUT TRAYS
 - (1) FLOOR MOUNTED TRAY
- COMPARTMENT LS4 CONTAINS:**
- (2) STREAMLIGHT FIRE VULCAN HAND LIGHTS
 - (1) KUSSMAUL PUMP PLUS 1200 CHARGER
 - (1) REAR WALL COMPARTMENT DIVIDER
 - (1) 1/2 DEPTH ADJ SHELF
 - (1) 1/2 DEPTH ADJ SLIDE OUT TRAY
 - (1) FLOOR MOUNTED TRAY



NOTE
DIMENSIONS SHOWN ARE APPROXIMATE AND ARE SUBJECT TO MINOR DEVIATIONS AS MAY OCCUR OR BE NECESSARY IN CONSTRUCTION. MINOR DETAILS NOT SHOWN.

- NOTES:**
1. WARN #9,000 PORTABLE RECEIVER STYLE WINCH
 2. BATTERY CHARGE INDICATOR LOCATED ON DRIVER'S SEAT RISER
 3. PULL STRAPS ON ALL BODY ROLL-UP DOORS
 4. ANDOR LED LIGHTS IN ALL BODY COMPARTMENTS
 5. ALUMINUM TREADPLATE ON FRONT OF BODY

CLEAR DOOR WIDTH KEY		CHASSIS DATA	
ANDOR ROLL UP DOORS:	-2 1/4"	DATE	29NOV22
CORTITE ROLL UP DOORS:	-2 1/2"	BY	DHE CDK
PIERCE DOUBLE LAP DOORS:	-4 1/4"	DATE	26AUG22
PIERCE LIFT-UP LAP DOORS:	-1 1/2"	BY	DHE CDK
(EX: 60" F-F - 2 1/4" = 57 3/4" CLEAR) (F-F) = FRAME TO FRAME		DATE	01AUG22
		BY	DHE CDK
		CH	M2-106

		JOB NO.	37539
		SCALE	DATE
TITLE	ENCORE RESCUE VEHICLE	DRAWN BY	DHE
FOR	LAKE CITY FIRE DEPARTMENT	CHECKED BY	CDK
DWG NO.	BID #693	SHEET SIZE	SHEET NO.
			1 OF 1

37539AD