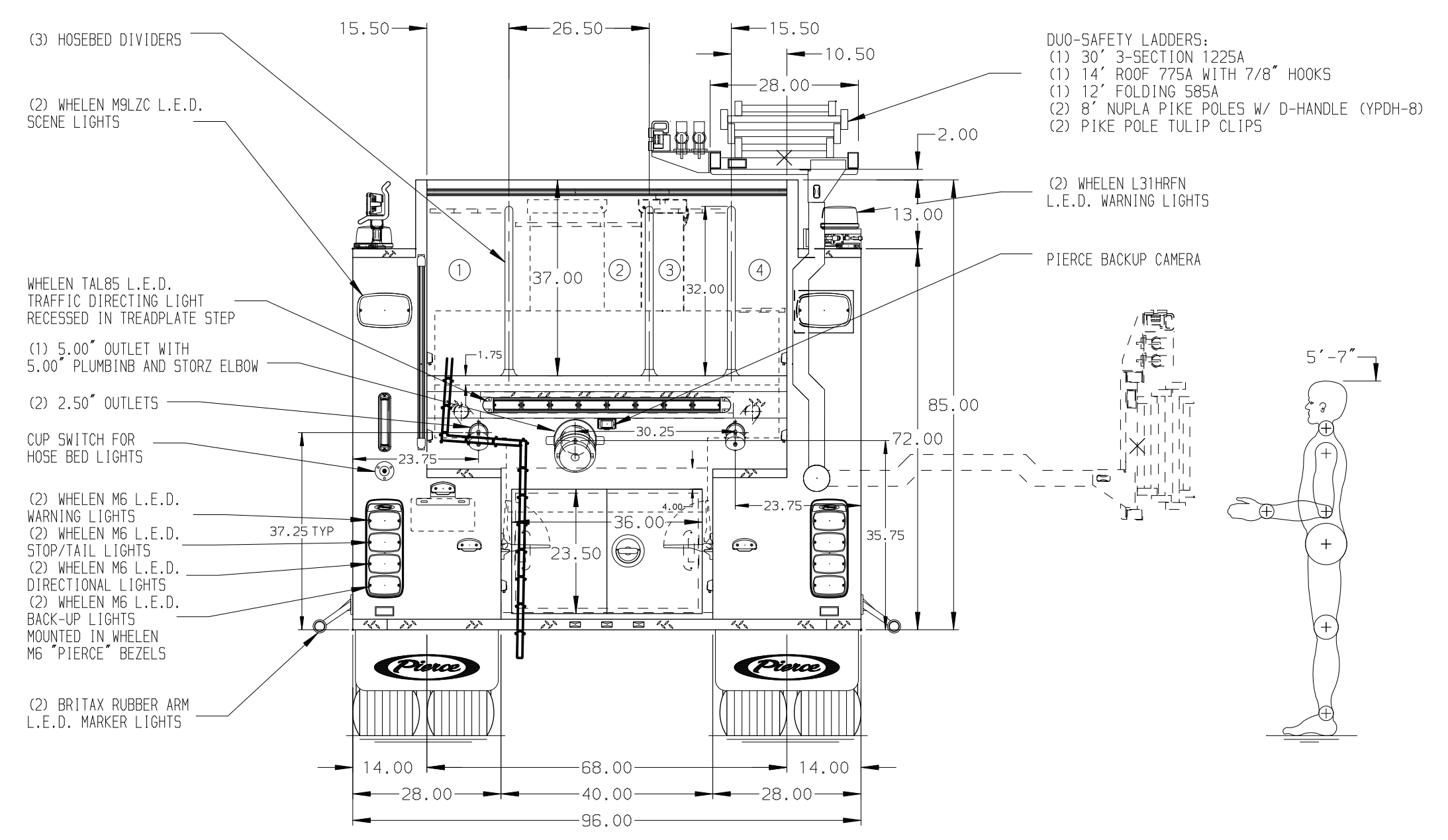
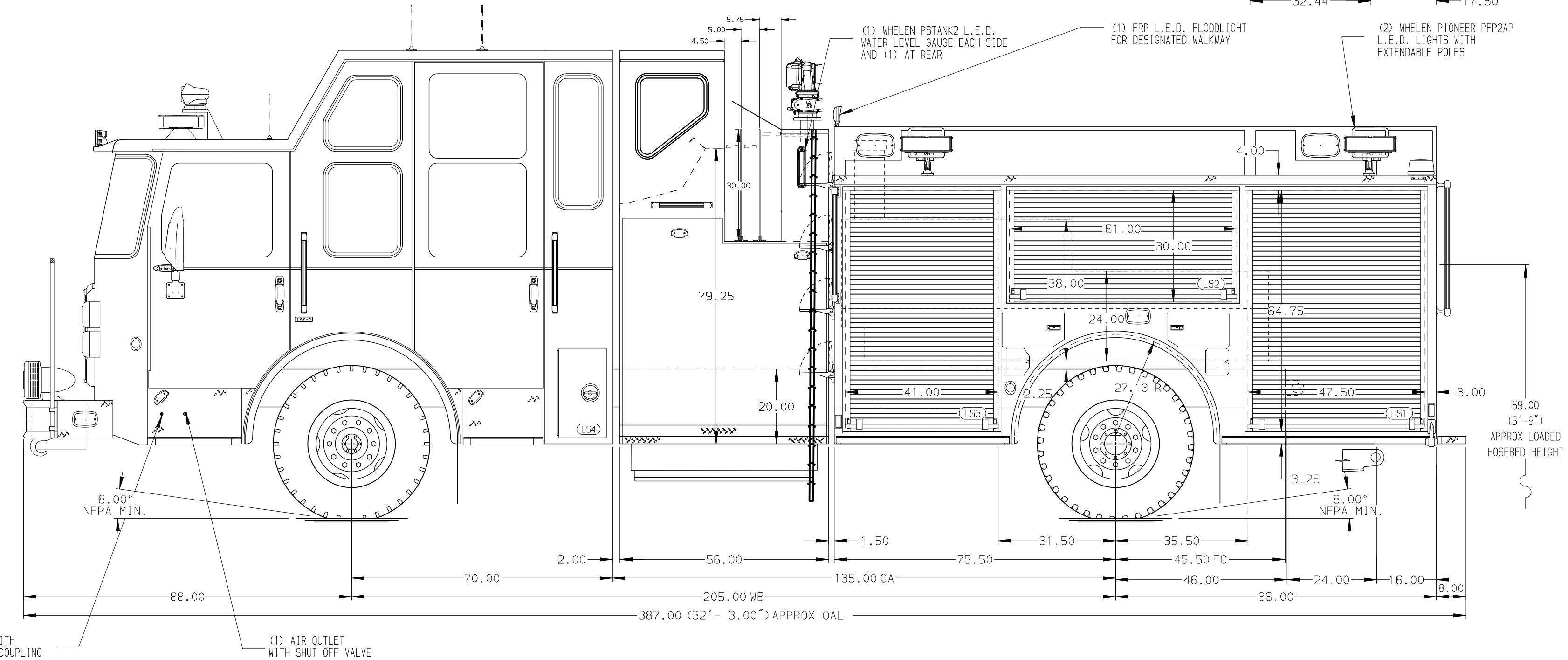


- HOSEBED CAPACITIES**
- ① - 750' OF 2.50" D.J. POLY HOSE
 - ② - 700' OF 5.00" L.D.H. HOSE
 - ③ - 750' OF 2.50" D.J. POLY HOSE
 - ④ - 200' OF 2.50" D.J. POLY HOSE



ALUMINUM BODY

MAXIMUM O.A.H. 126.00"

NOTE
DIMENSIONS SHOWN ARE APPROXIMATE AND ARE SUBJECT TO MINOR DEVIATIONS AS MAY OCCUR OR BE NECESSARY IN CONSTRUCTION. MINOR DETAILS NOT SHOWN.

CUSTOMER APPROVAL				Pierce MANUFACTURING INC.		JOB NO.	37560		
APPROVED BY: _____						SCALE	1:24	DATE	
DATE: _____						DRAWN BY	JJB	08SEP22	
CHASSIS DATA				TITLE	2000-D-660P, 600G WATER, 60G FOAM, 161" FDLER BODY HYDRAULIC LADDER RACK RS, ENCLOSED TOP MOUNT, DELUGE				
MAKE				FOR	LETHBRIDGE FIRE DEPARTMENT LETHBRIDGE, ALBERTA				
MODEL				DWG NO.	37560AD				
REV	DATE	BY	CH	ENFORCER	SHEET NO. 1 OF 1				