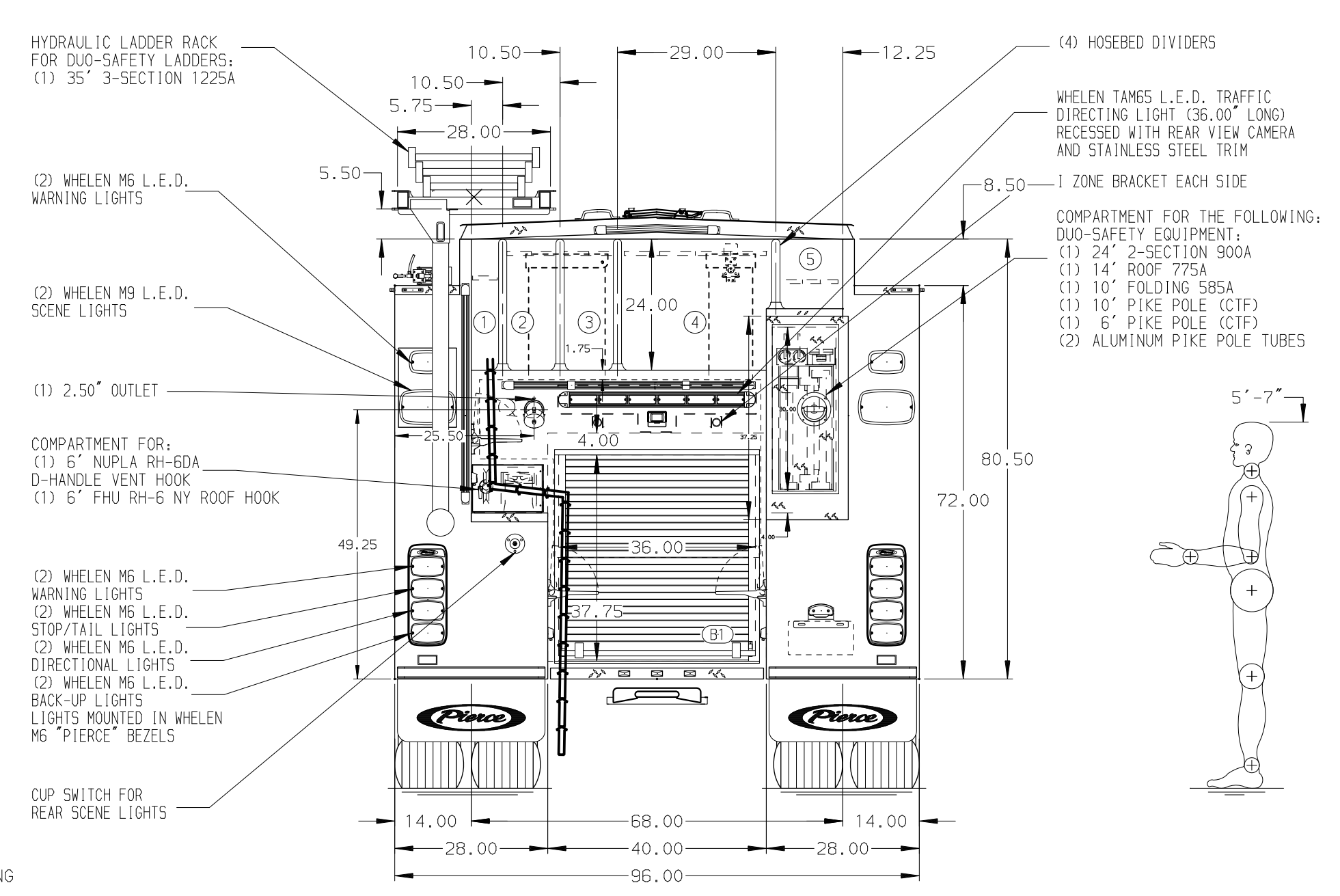
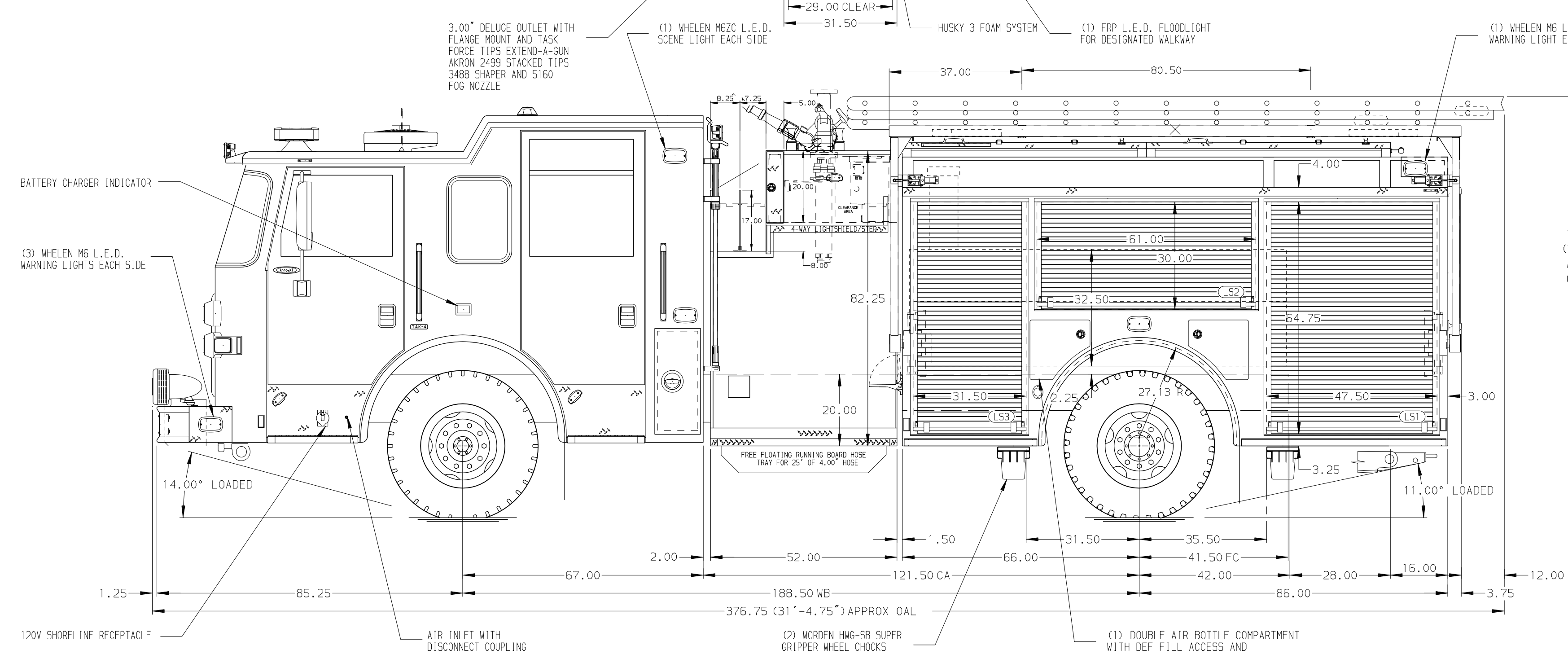


- HOSEBED CAPACITIES**
- ① - 200' OF 2.50" D.J. POLY HOSE
  - ② - 500' OF 2.50" D.J. POLY HOSE
  - ③ - 500' OF 2.50" D.J. POLY HOSE
  - ④ - 1000' OF 4.00" D.J. POLY HOSE
  - ⑤ - TWO 100' OF 1.75" HOSE HIGH RISE PACKS



ALUMINUM BODY      MAXIMUM O.A.H. 120.00"

**NOTE**  
DIMENSIONS SHOWN ARE APPROXIMATE AND ARE SUBJECT TO MINOR DEVIATIONS AS MAY OCCUR OR BE NECESSARY IN CONSTRUCTION. MINOR DETAILS NOT SHOWN.

1. DRIP PAN GUARD FOR ROLL-UP DOORS LOCATED PER SHOP ORDER
2. SIX FULL WIDTH/DEPTH ADJUSTABLE SHELVES LOCATED PER SHOP ORDER
3. ONE ADJUSTABLE SLIDE-OUT TRAY LOCATED PER SHOP ORDER
4. TWO FLOOR MOUNTED SLIDE-OUT TRAYS LOCATED PER SHOP ORDER
5. ONE CTECH THREE DRAWER LOCATED PER SHOP ORDER
6. ONE SWING-OUT TOOLBOARD LOCATED PER SHOP ORDER
7. PARTITION BETWEEN COMPARTMENTS L51/B1 AND R51/B1
8. TWO ZIAMATIC SCBA HOLDER BRACKETS LOCATED PER SHOP ORDER
9. FIVE PAC TRACS ON THE REAR WALLS LOCATED PER SHOP ORDER
10. THREE 120V DUPLEX RECEPTACLES LOCATED PER SHOP ORDER

CUSTOMER APPROVAL				
APPROVED BY:				
DATE:				
REV	DATE	BY	CH	ARROW XT

**Pierce MANUFACTURING INC.**

TITLE: 1500-D-530P, 500G WATER, 30G FOAM, 152" FDLER PUMPER LADDERS BTWN TANK & SS W/ LS HYD. RACK, (2) XLAYS

FOR: VISTA FIRE DEPARTMENT VISTA, CALIFORNIA

DWG NO. 37593AD

JOB NO.	37593-01-02
SCALE	1:24
DATE	
DRAWN BY	JJB
CHECKED BY	WKL
SHEET SIZE	D
SHEET NO.	1 OF 1