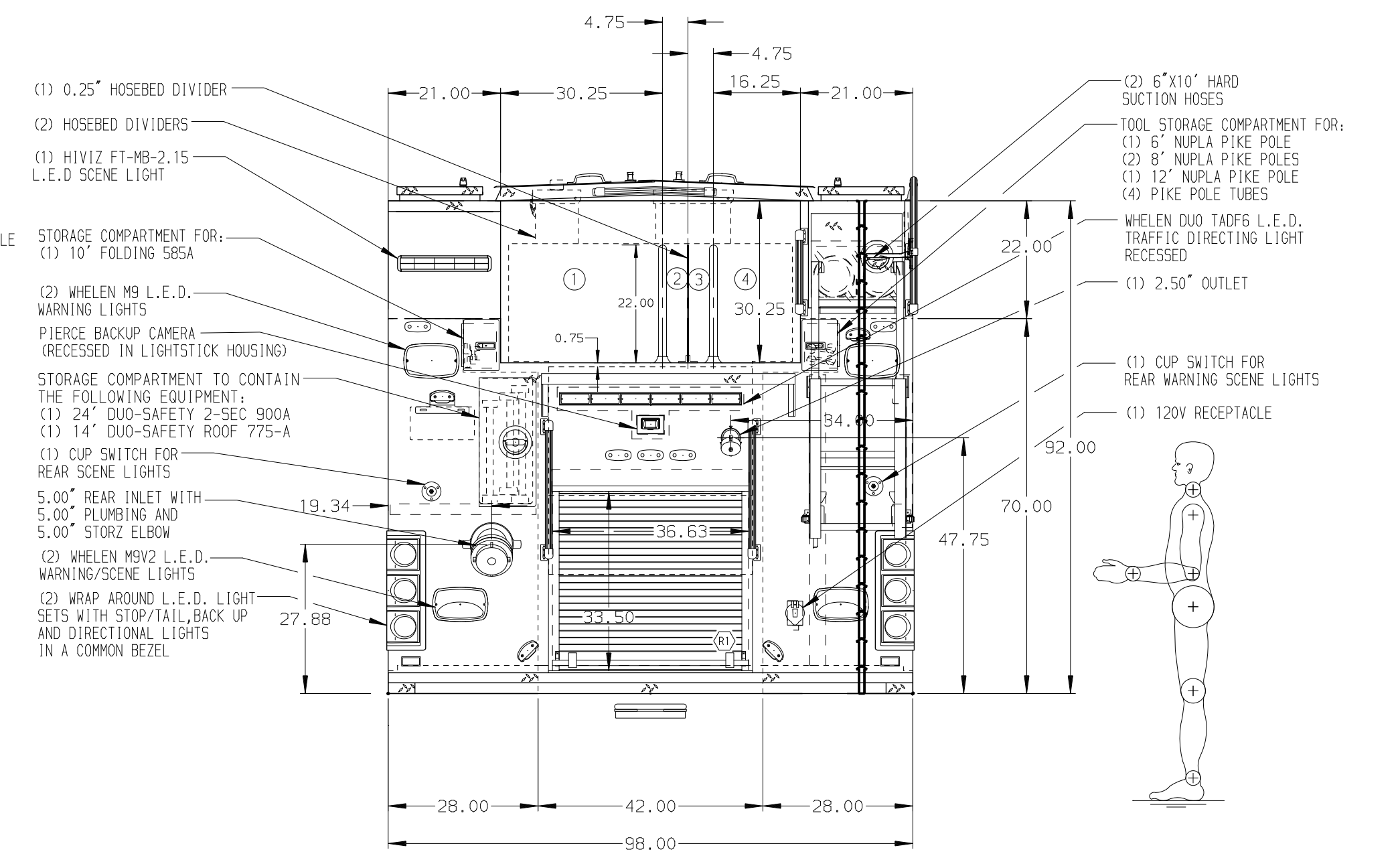
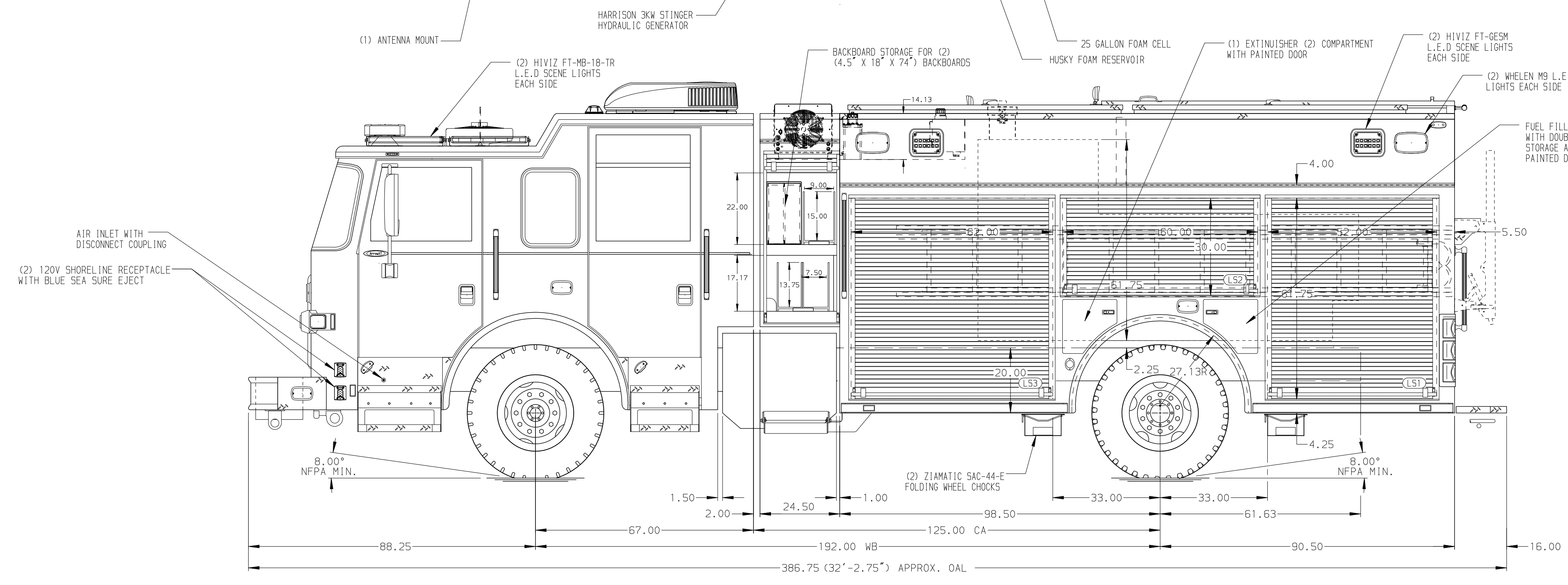


- HOSEBED CAPACITIES
- ① 700' OF 5.00" D.J. POLY HOSE
  - ② 150' OF 1.75" D.J. POLY HOSE
  - ③ 150' OF 1.75" D.J. POLY HOSE
  - ④ 600' OF 2.50" D.J. POLY HOSE



ALUMINUM BODY    MAXIMUM O.A.H. 123.00"    SIDE ROLL AND FRONTAL IMPACT PROTECTION

**NOTE**  
DIMENSIONS SHOWN ARE APPROXIMATE AND ARE SUBJECT TO MINOR DEVIATIONS AS MAY OCCUR OR BE NECESSARY IN CONSTRUCTION. MINOR DETAILS NOT SHOWN.

- 1. BATTERY CHARGER LOCATED IN COMPARTMENT RS3
- 2. ONE FLOOR MOUNTED SLIDE-OUT TRAY LOCATED PER ORDER
- 3. ONE VERTICAL PARTITION BETWEEN COMPARTMENTS L51/B1 AND R51/B1
- 4. SIX FULL WIDTH/DEPTH ADJUSTABLE SHELF LOCATED PER ORDER
- 5. CIRCUIT BREAKER PANEL LOCATED PER ORDER
- 6. ONE HANNAY ELECTRIC REWIND CORO REEL MODEL 1618-17-18 WITH 200' OF 10/3 CABLE LOCATED IN PS HATCH COMPARTMENT
- 7. ONE CTECH DRAWER (2) ASSEMBLY LOCATED PER ORDER
- 8. ONE 6" DUO SAFETY F/G PIKE POLE W/D HANDLE SHIPPED LOOSE
- 9. ELASTIC PULL STRAP LOCATED PER ORDER
- 10. PEGBOARD MOUNTED ON BACK WALL LOCATED PER ORDER
- 11. PEGBOARD MOUNTED ON SIDE WALL LOCATED PER ORDER
- 12. PEGBOARD MOUNTED ON BACK WALL WITH TRACK LOCATED PER ORDER

REV	DATE	BY	CH	ARROW XT
25JAN23	LME	DKH		
28OCT22	LME	GKH		
05AUG22	KLE	CZA		

		JOB NO.	37614
		SCALE	DATE
TITLE	1250-D-775P, 750 WATER W/25 FOAM, 189" PUC RESCUE (3) CROSSLAYS, DELUGE, HUSKY 12, LADDERS THRU BODY		
FOR	SOMERTON COCOPAH FIRE DEPARTMENT SOMERTON, ARIZONA		
DWG NO.	37614AD		
CHECKED BY	LME	DRAWN BY	28JUL22
CHECKED BY	CZA	DRAWN BY	29JUL22
SHEET SIZE	D	SHEET NO.	1 OF 1