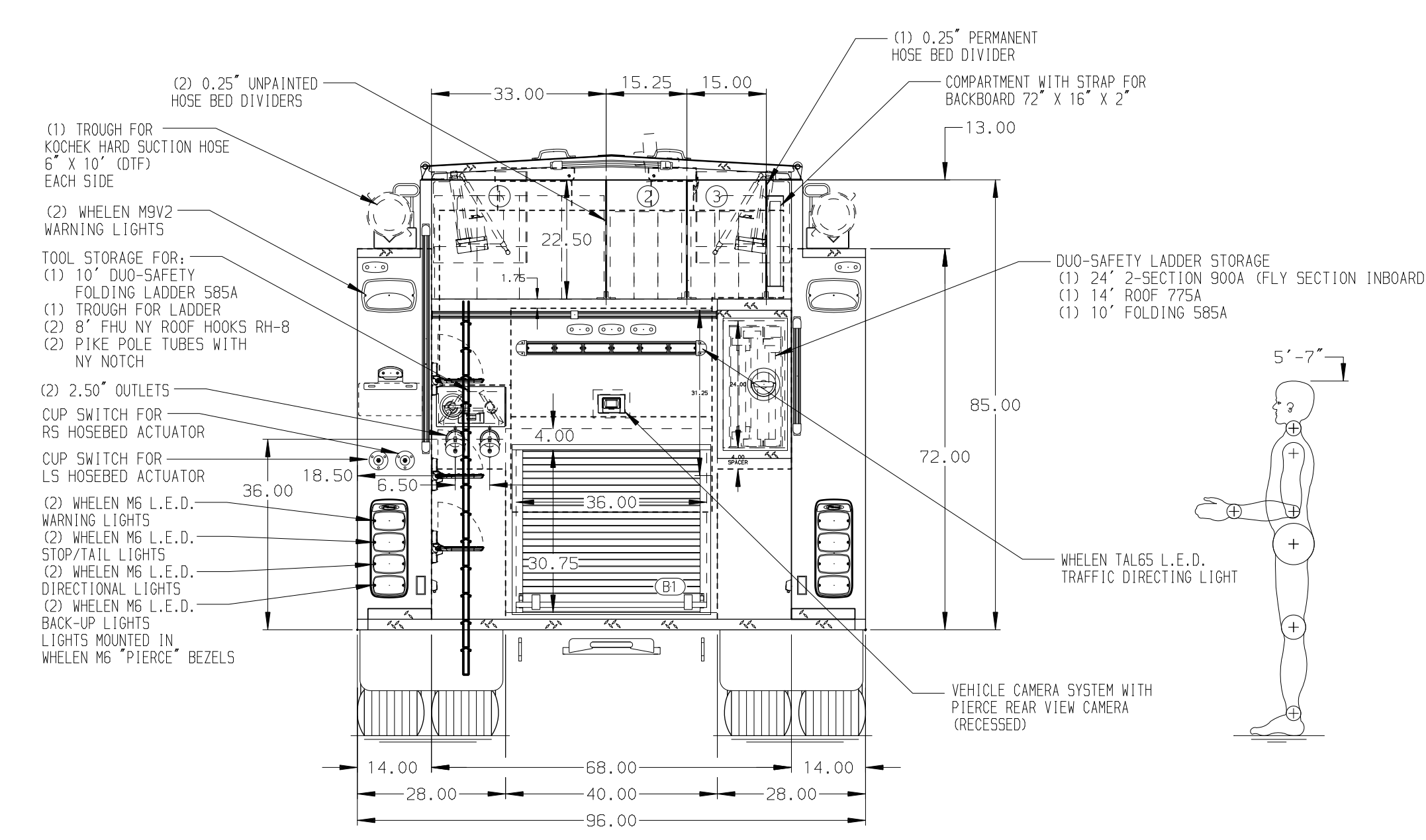


HOSEBED CAPACITIES

- ① - 800' OF 5.00" DJP HOSE
- ② - 500' OF 2.50" DJP HOSE
- ③ - 500' OF 2.50" DJP HOSE



ALUMINUM BODY

NOTE
DIMENSIONS SHOWN ARE APPROXIMATE AND ARE SUBJECT TO MINOR DEVIATIONS AS MAY OCCUR OR BE NECESSARY IN CONSTRUCTION. MINOR DETAILS NOT SHOWN.

1. ONE PAIR WORDEN HW6Y-SB SUPER GRIPPER WHEEL CHOCKS (BRACKETS PROVIDED BY FIRE DEPARTMENT)
2. INSTALL CUSTOMER FURNISHED ANTENNAS PER ORDER
3. BATTERY CHARGER MOUNTED BEHIND DRIVER'S SEAT PER ORDER
4. L.E.D. LIGHTS BELOW HOSE BED COVER PER ORDER
5. L.E.D. LIGHT STRIPS IN CARGO AREA

REV	DATE	BY	CH	ENFORCER
14APR23		SAM	BSE	CHASSIS DATA
26JAN23		SAM	BSE	MAKE
26JAN23		SAM	BSE	PIERCE
02DEC22		SAM	BSE	MODEL
12OCT22		SAM	BSE	

		JOB NO.	37621 (01-06)
		SCALE	1:24
TITLE 1500-D-770P, 750G WATER W/20G FOAM, 152" PUMPER BODY (2) CROSSLAYS, LADDERS BTWN TANK & SS, DELUGE		DRAWN BY	SAM
		DATE	16AUG22
FOR STOCKTON FIRE DEPARTMENT STOCKTON, CALIFORNIA		CHECKED BY	BSE
		DATE	19AUG22
DWG NO. 37621AD-SH1		SHEET SIZE	D
		SHEET NO.	1 OF 2