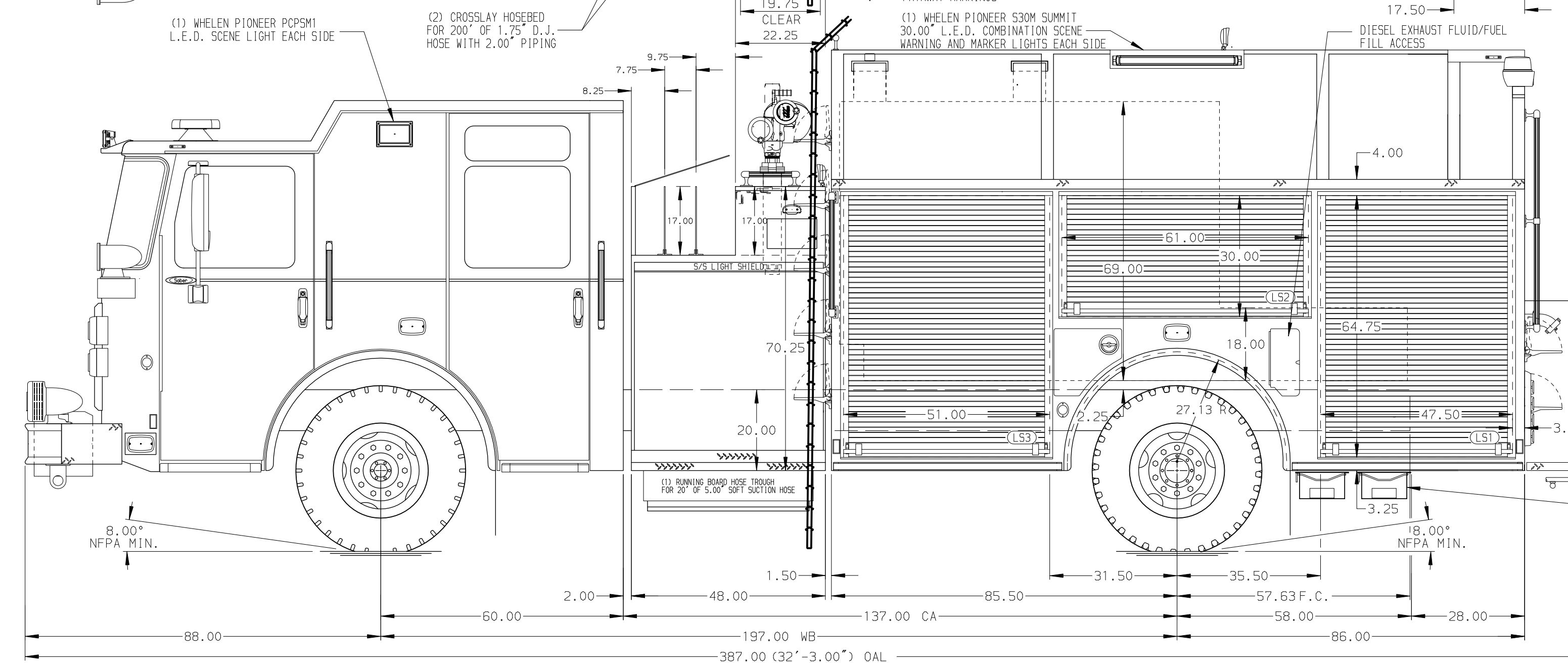
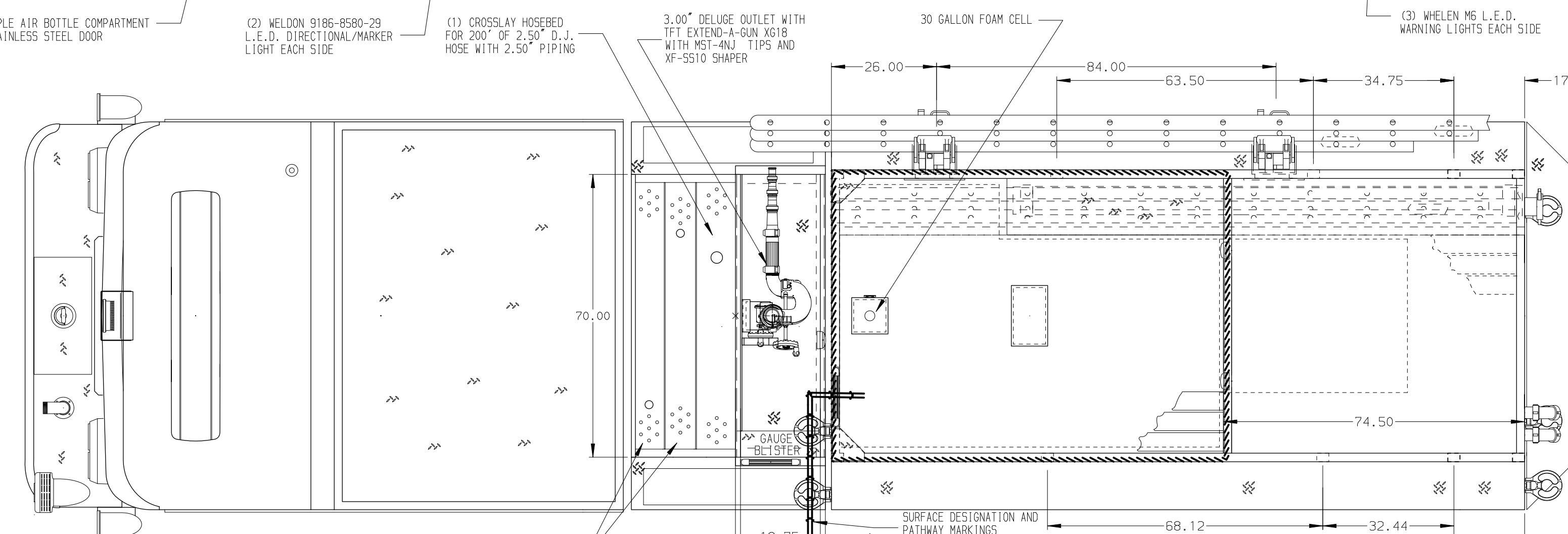
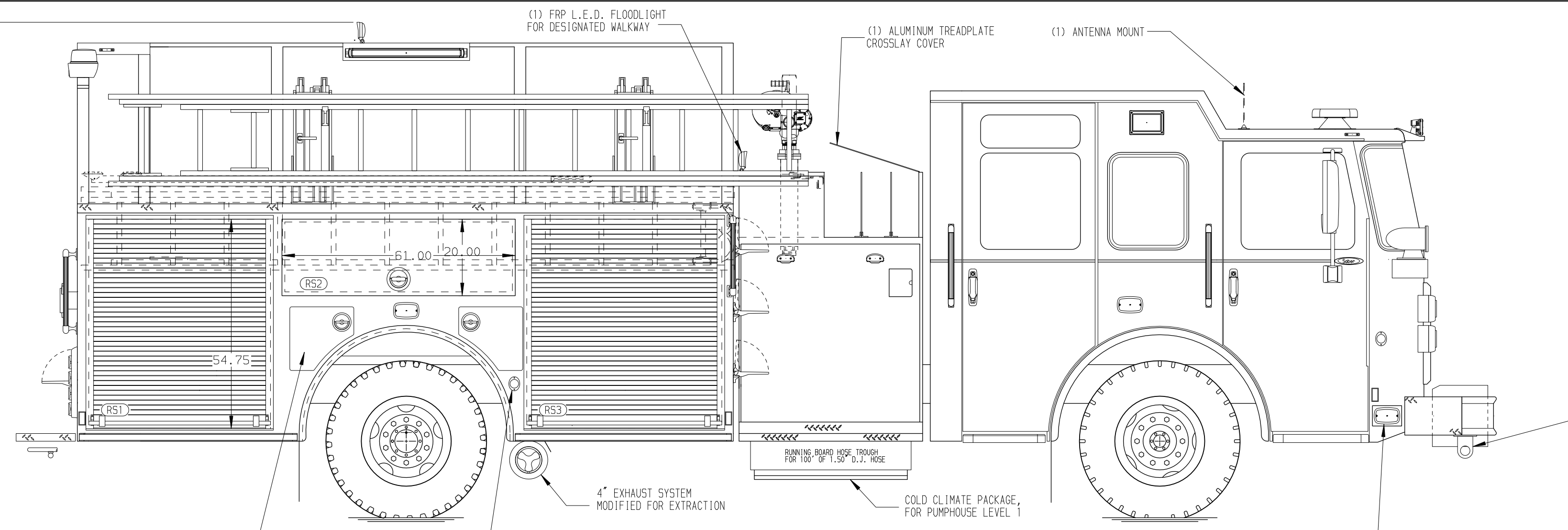
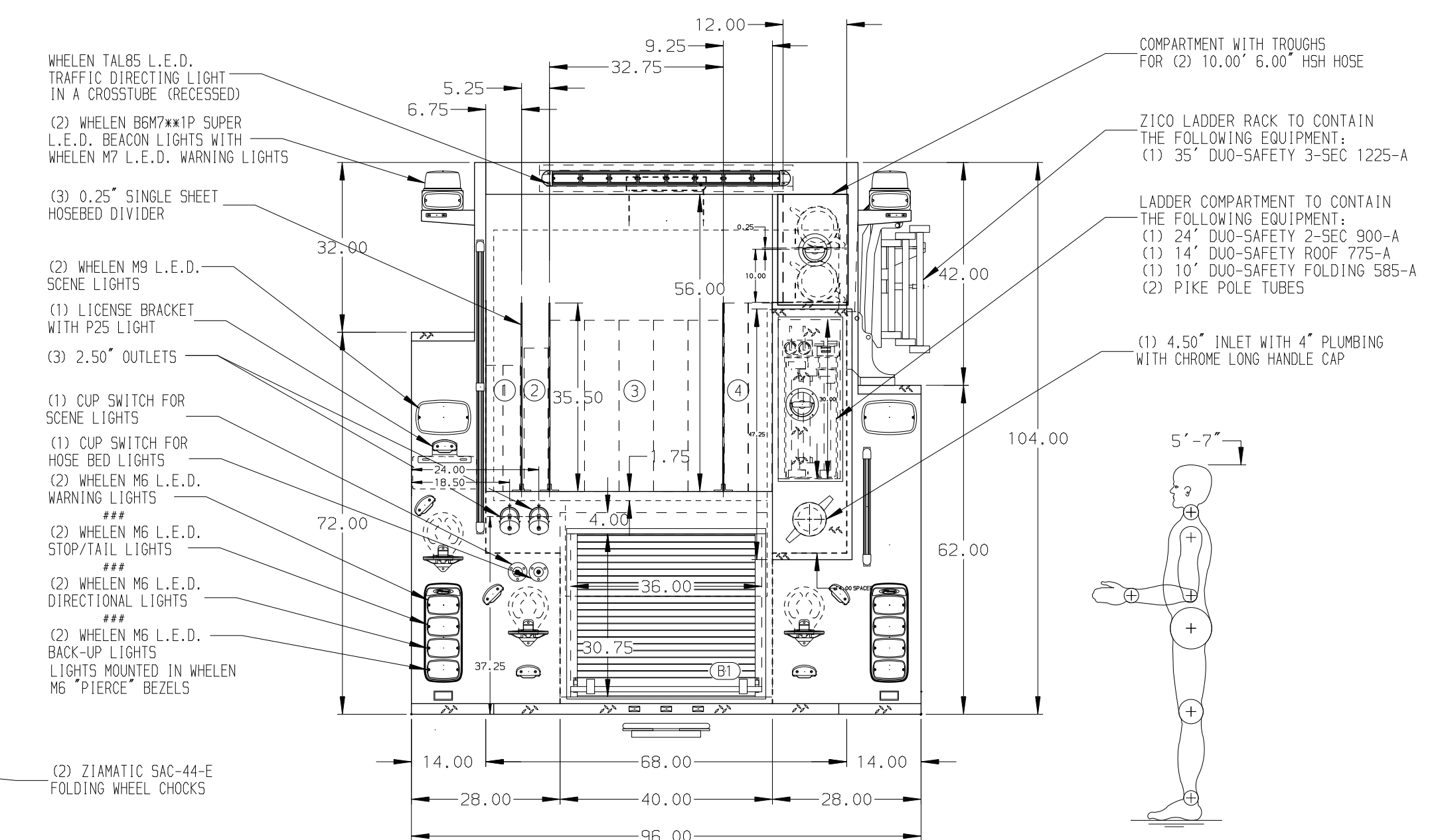


132.00  
(11'-0")  
APPROX  
O.A.H.



- HOSEBED CAPACITIES
- ① 400' OF 1.75" D.J. POLY HOSE
  - ② 200' OF 2.50" D.J. POLY HOSE
  - ③ 1200' OF 4.00" LDH HOSE
  - ④ 500' OF 2.50" D.J. POLY HOSE



ALUMINUM BODY

NOTE  
DIMENSIONS SHOWN ARE APPROXIMATE AND ARE SUBJECT TO MINOR DEVIATIONS AS MAY OCCUR OR BE NECESSARY IN CONSTRUCTION. MINOR DETAILS NOT SHOWN.

- 1. BATTERY CHARGER LOCATED PER ORDER
- 2. DUAL L.E.D. LIGHT STRIPS LOCATED IN HOSE BED
- 3. FIVE FULL WIDTH/DEPTH ADJUSTABLE SHELVES LOCATED PER ORDER
- 4. ONE FLOOR MOUNTED SLIDE-OUT TRAY LOCATED PER ORDER
- 5. ONE SWING-OUT TOOL BOARD WITH PEGBOARD PATTERN LOCATED PER ORDER
- 6. ONE SLIDE-OUT TOOL BOARD WITH PEGBOARD PATTERN LOCATED PER ORDER

CUSTOMER APPROVAL			
APPROVED BY:			
DATE:			
REV	DATE	BY	CH

		JOB NO.	37622		
		SCALE	DATE		
CHASSIS DATA	TITLE	1500-D-1280P, 1250 GAL OF WATER W/ 30 GAL FOAM CELL 171" BODY, ZICO RACK, LDERS. BTWN. TANK & SIDE SHEET	DRAWN BY	BTH	14MAR22
MAKE	FOR	HALLOWELL FIRE DEPARTMENT HALLOWELL, MAINE	CHECKED BY	PHA	16MAR22
MODEL	DWG NO.	37622AD	SHEET SIZE	D	SHEET NO. 1 OF 1