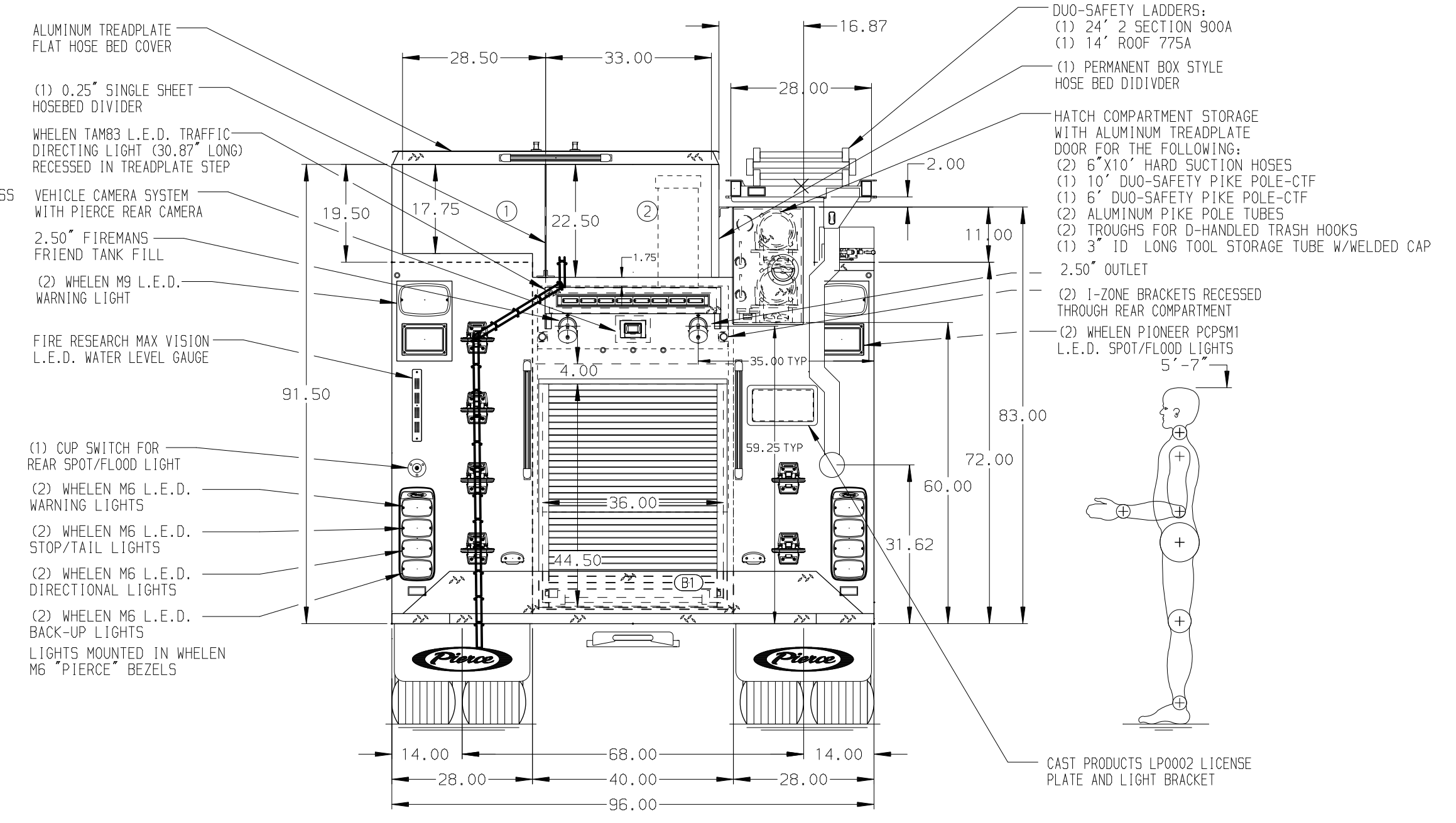


HOSEBED CAPACITIES  
 ① 800' OF 3.00" HOSE  
 ② 800' OF 5.00" HOSE



ALUMINUM BODY

SIDE ROLL AND FRONTAL IMPACT PROTECTION

CUSTOMER APPROVAL			
APPROVED BY:			
DATE:			
CHASSIS DATA	TITLE	1500-D-770P, 750G WATER, 20G FOAM, 152" PUMPER BODY	
MAKE	FOR	(1) CROSSLAY, (2) SPEEDLAYS, DELUGE, BOOSTER REEL	
PIERCE		SAINT HELENA FIRE DEPARTMENT	
MODEL		SAINT HELENA, CALIFORNIA	
ENFORCER	DWG NO.	37639AD	



JOB NO.	37639
SCALE	DATE
1:24	
DRAWN BY	200CT22
LME	
CHECKED BY	250CT22
WKL	
SHEET SIZE	SHEET NO.
D	1 OF 1

NOTE  
 DIMENSIONS SHOWN ARE APPROXIMATE AND ARE SUBJECT TO MINOR DEVIATIONS AS MAY OCCUR OR BE NECESSARY IN CONSTRUCTION. MINOR DETAILS NOT SHOWN.

- BATTERY CHARGER/COMPRESSOR LOCATED IN COMPARTMENT LS3
- BATTERY CHARGER INDICATOR LOCATED ON DRIVER'S SEAT RISER
- DRIP PAN GUARD FOR ROLL-UP DOOR LOCATED PER ORDER
- KEYED LOCK FOR LATCH LOCATED PER ORDER
- PULL STRAP ON DOOR LOCATED PER ORDER
- REVERSED HINGED DOOR ON COMPARTMENT LS3
- NINE FULL WIDTH/DEPTH ADJUSTABLE SHELVES LOCATED PER ORDER
- ONE FULL WIDTH/DEPTH FLOOR MOUNTED SLIDE-OUT TRAY WITH SIDE SLIDES LOCATED PER ORDER
- THREE FLOOR MOUNTED SLIDE-OUT TRAY WITH 3 SLIDES LOCATED PER ORDER
- ONE SLIDE-OUT TOOL BOARD WITH PEGBOARD PATTERN LOCATED PER ORDER
- ONE SWING-OUT TOOL BOARD WITH PEGBOARD PATTERN LOCATED PER ORDER
- ONE VERTICAL PEGBOARD PARTITION LOCATED PER ORDER
- TWO ADDITIONAL POLY TRAYS SHIPPED LOOSE
- ONE 120V DUPLEX RECEPTACLE LOCATED IN COMPARTMENT LS3
- AIR INLET/OUTLET WITH DISCONNECT FITTING LOCATED IN PS PUMP PANEL
- 120V BLUE SEA SURE EJECT 7851 SHORELINE RECEPTACLE LOCATED IN DS PUMP PANEL