

Pumper, PUC BODY

Pumper, PUC, Aluminum

CHASSIS

Enforcer Chassis, PUC

CHASSIS AXLE, FRONT, CUSTOM

22,800 Lb Meritor Axle

AXLE, REAR

31,000 Lb Meritor Axle

ENGINE

510 HP Paccor MX13 Engine

TRANSMISSION

Allison 5th Gen, 4000 EVS P

BUMPER

19" Extended Stainless Steel

CAB

7010 Enforcer Cab, PUC

BODY

WATER TANK

1000 Gallon Poly Water Tank

COMPT, PUMPER, REAR

40.50" FF RollUp Rear Compt w/Tailboard, PUC

COMPT, PUMPER, LEFT SIDE

189" RollUp Full Height & Depth Front & Rear, PUC

COMPT, PUMPER, RIGHT SIDE

189" RollUp Full Height & Depth Front & Rear, PUC

FIRE SUPPRESSION PUMPHOUSE

Control Zone, PUC

PUMP

1500 GPM Pierce PUC

CROSSLAYS, 1.50"

(2) 1.50", Poly Trays, 200'

CROSSLAYS, 2.50"

(1) 2.50", Poly Tray, 200'

GENERATOR

Generator Not Required

Foam System

Foam System Not Required

Foam Cell

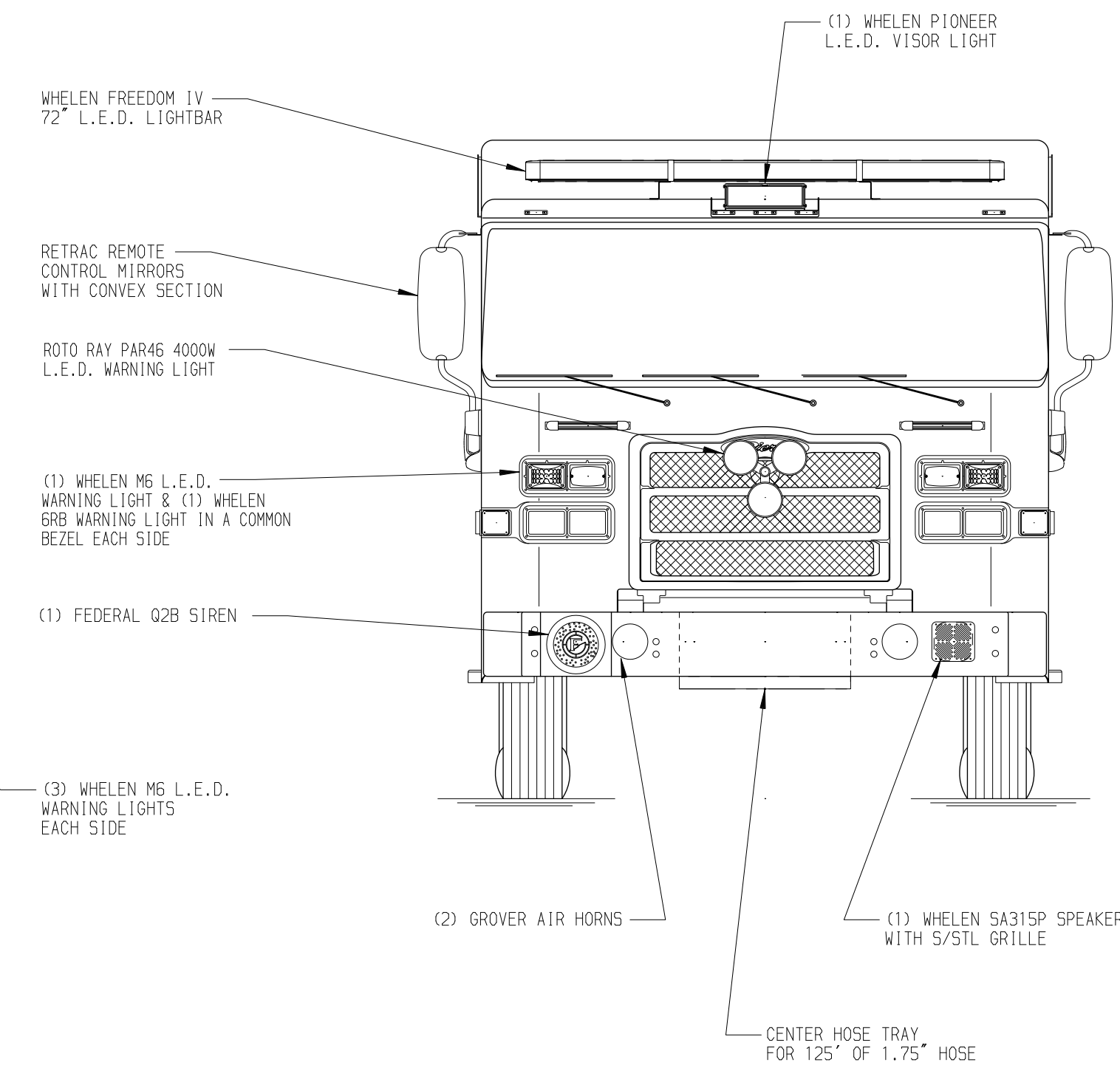
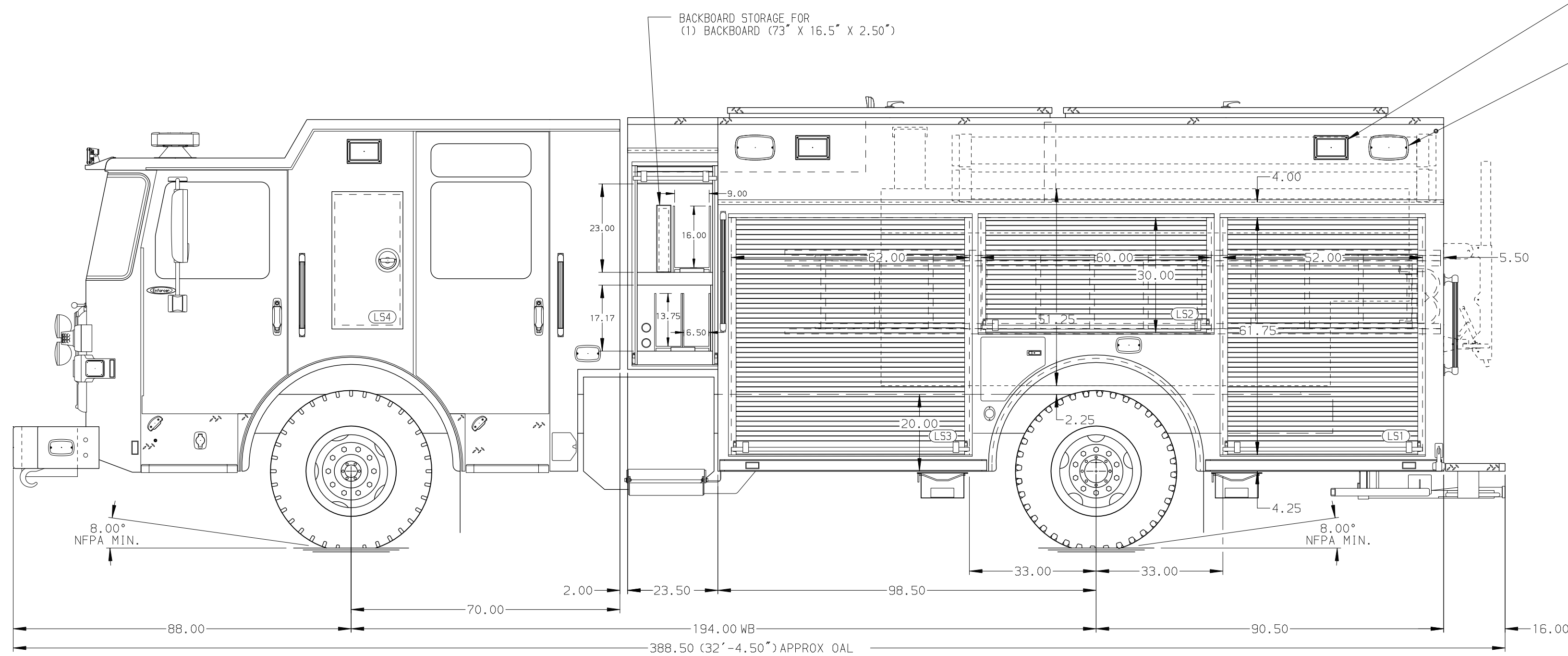
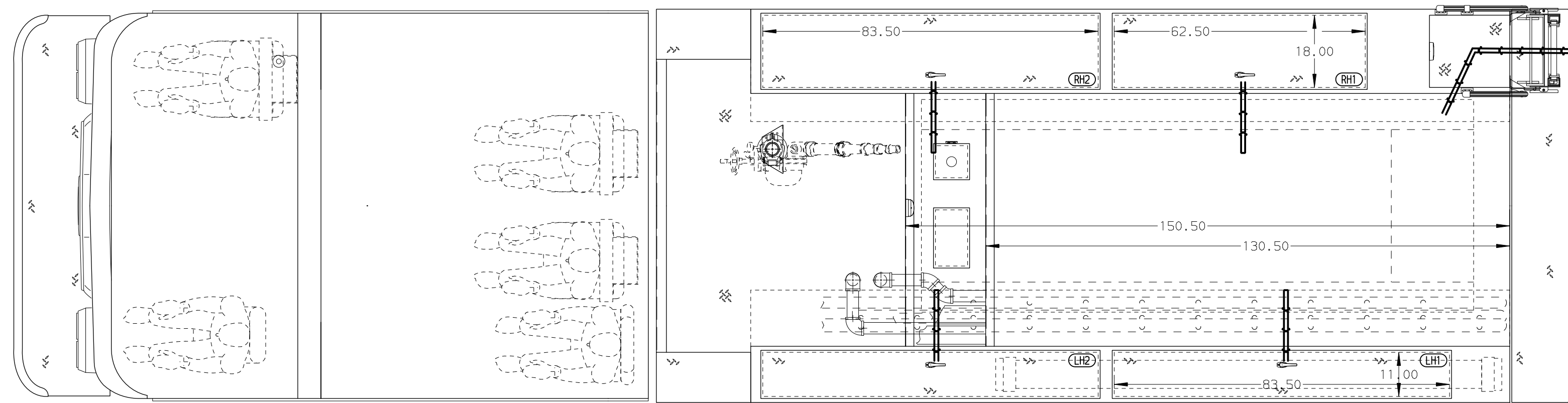
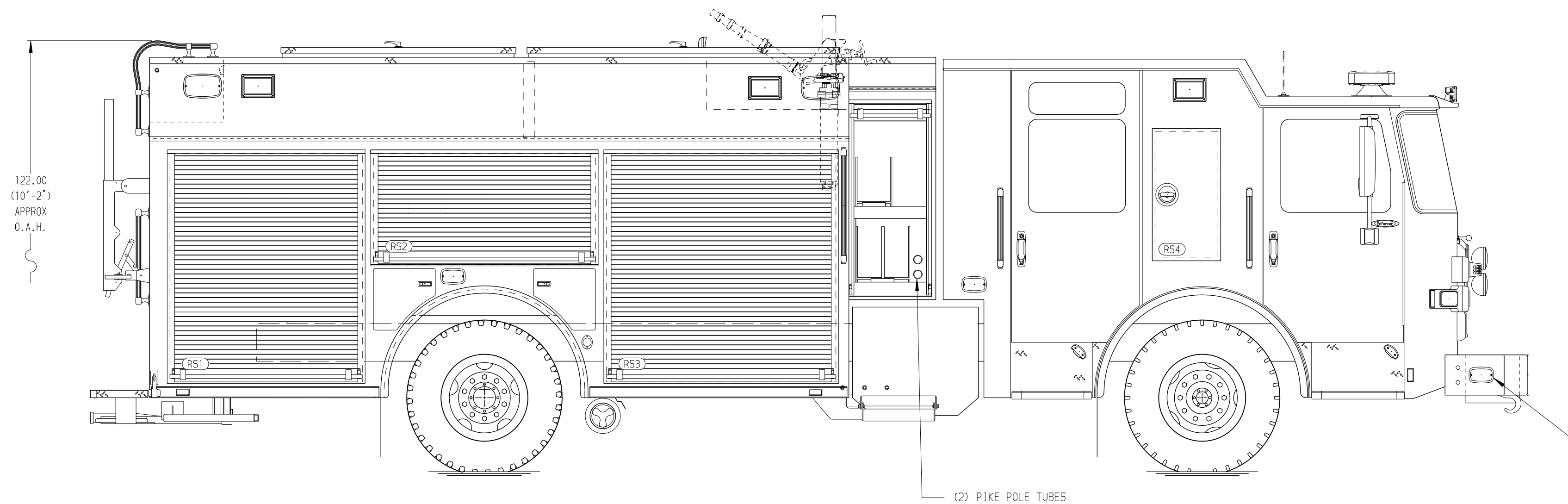
30 Gal Foam Cell Reduce Water

NOTE

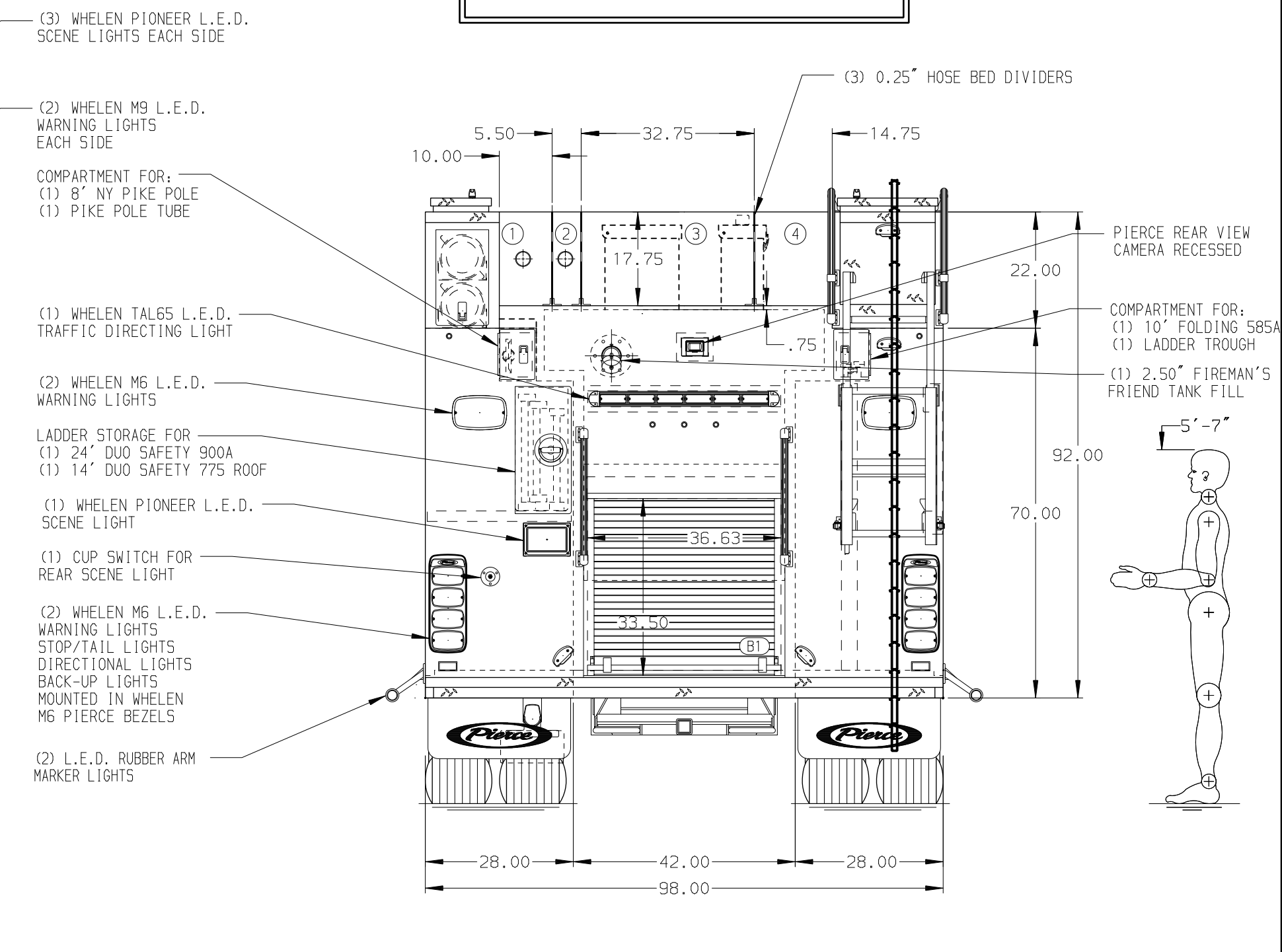
DIMENSIONS SHOWN ARE APPROXIMATE AND ARE SUBJECT TO MINOR DEVIATIONS AS MAY OCCUR OR BE NECESSARY IN CONSTRUCTION. MINOR DETAILS NOT SHOWN.

- ONE 1.50" OUTLET WITH 2.00" PIPING AND SMIVEL LOCATED IN CENTER HOSE TRAY
- SHORELINE RECEPTACLE WITH KUSSMAUL SUPER AUTO-EJECT LOCATED ON DRIVER SIDE STEP WELL
- AIR INLET WITH DISCONNECT COUPLING IN THE DRIVER SIDE STEPWELL
- AIR OUTLET WITH SHUT OFF VALVE LOCATED ON DRIVERS SIDE PUMP PANEL
- BATTERY CHARGER LOCATED IN COMPARTMENT PER SHOP ORDER
- BATTERY CHARGE INDICATOR LOCATED ON THE DRIVER SIDE SEAT RISER
- FOUR ADJUSTABLE SHELVES IN COMPARTMENTS PER SHOP ORDER
- THREE FLOOR MOUNTED SLIDE-OUT TRAY IN COMPARTMENT PER SHOP ORDER
- ONE SLIDE-OUT TRAY LOCATED IN COMPARTMENT PER SHOP ORDER
- TWO TILT/SLIDE-OUT TRAYS LOCATED IN COMPARTMENTS PER SHOP ORDER
- ONE SLIDE-OUT TOOLBOARD LOCATED IN COMPARTMENT PER SHOP ORDER

- ONE VERTICAL PARTITION IN COMPARTMENT PER SHOP ORDER
- PEGBOARD ON BACK WALL IN COMPARTMENTS PER SHOP ORDER
- TWO SWING-OUT TOOLBOARDS LOCATED IN COMPARTMENT PER SHOP ORDER



HOSEBED CAPACITY	
BED 1	200' OF 1.75" D.J. POLY HOSE (ABOVE) 200' OF 2.50" D.J. POLY HOSE (BELOW)
BED 2	200' OF 2.50" D.J. POLY HOSE
BED 3	975' OF 5.00" D.J. POLY HOSE
BED 4	400' OF 3.00" D.J. POLY HOSE



CUSTOMER APPROVAL

APPROVED BY: _____
DATE: _____



JOB NO. 37648
SCALE 1:24
DATE

CHASSIS DATA	TITLE	Pierce PUC Pumper Approval Drawing
MAKE	FOR	Beaufort Fire Department
PIERCE	DWG NO.	37648AD
MODEL		
ENFORCER		

CHECKED BY	COL	11MAY22
SHEET SIZE	D	SHEET NO. 1 OF 1