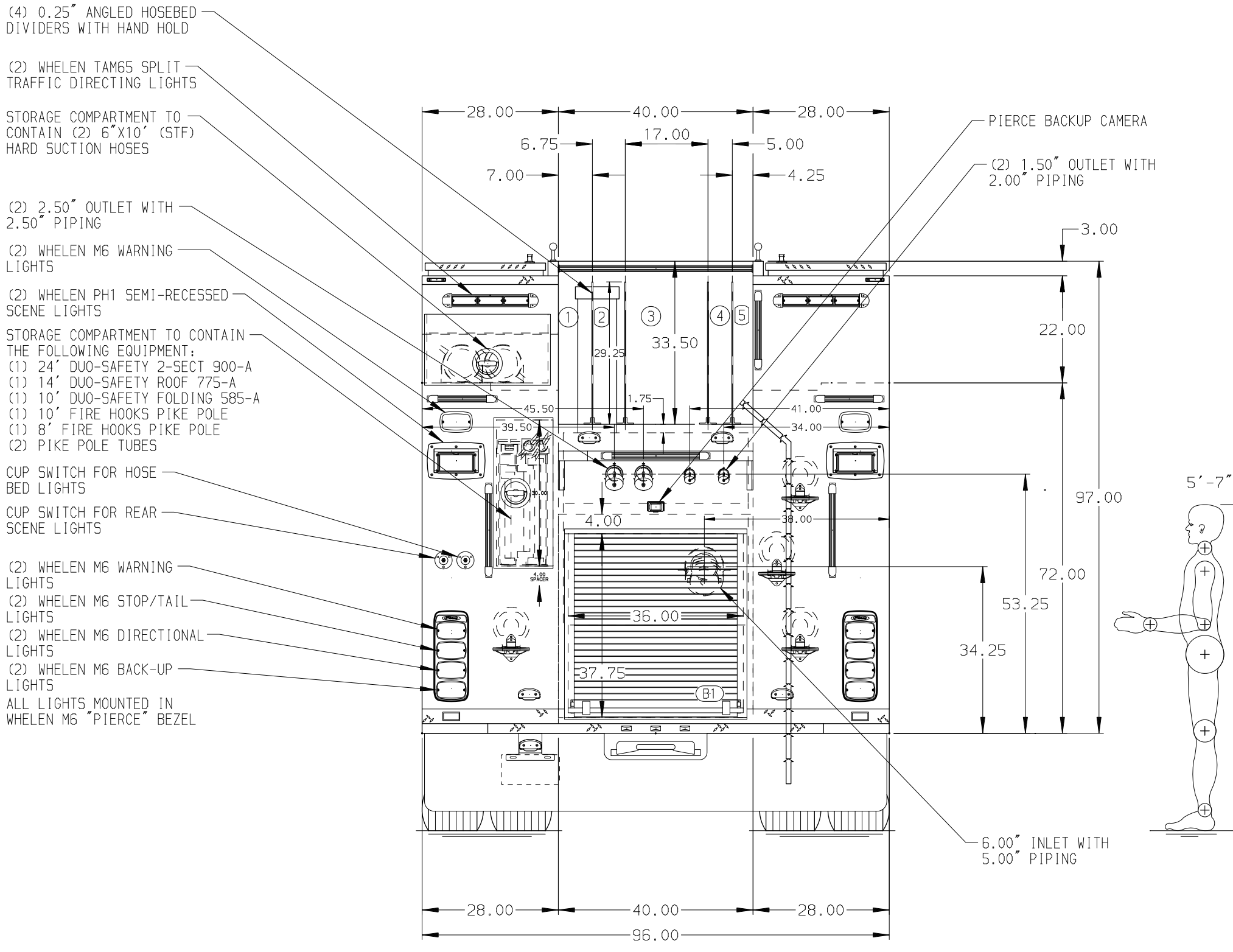


- HOSEBED CAPACITIES**
- ① 300' OF 3.00" D.J. POLY HOSE
  - ② 300' OF 3.00" D.J. POLY HOSE
  - ③ 1000' OF 5.00" SNAP-TITE TPX HOSE
  - ④ 300' OF 1.75" D.J. POLY HOSE
  - ⑤ 300' OF 1.75" D.J. POLY HOSE



STAINLESS STEEL BODY    MAXIMUM O.A.H. 125.00"    MAXIMUM O.A.L. 404.50"

**NOTE**  
DIMENSIONS SHOWN ARE APPROXIMATE AND ARE SUBJECT TO MINOR DEVIATIONS AS MAY OCCUR OR BE NECESSARY IN CONSTRUCTION. MINOR DETAILS NOT SHOWN.

1. BATTERY CHARGER LOCATED PER ORDER
2. BATTERY CHARGER INDICATOR DISPLAY THROUGH WINDOW BEHIND DRIVER SEAT
3. SIX FULL WIDTH/DEPTH ADJUSTABLE SHELVES WITH SIDES LOCATED PER ORDER
4. ONE ADJUSTABLE FULL WIDTH SLIDE-OUT TRAY LOCATED PER ORDER
5. TWO ADJUSTABLE TILT/SLIDE-OUT TRAYS LOCATED PER ORDER
6. ONE FLOOR MOUNTED SLIDE-OUT TRAY WITH SIDES LOCATED PER ORDER
7. THREE PARTITIONS LOCATED PER ORDER
8. CIRCUIT BREAKER PANEL LOCATED PER ORDER
9. ONE 120V DUPLEX RECEPTACLE LOCATED IN CAB PER ORDER
10. TWO 120V DUPLEX RECEPTACLES IN REAR BODY COMPARTMENT LOCATED PER ORDER

CUSTOMER APPROVAL				Pierce MANUFACTURING INC.		JOB NO.	37653
APPROVED BY:				TITLE	2000-D-750P, 171" PUMPER RESCUE BODY, BOOSTER REEL LADDERS THRU BODY, (3) CROSSLAYS, GENERATOR	SCALE	DATE
DATE:						1:24	
			CHASSIS DATA	FOR	BUSHNELL'S BASIN FIRE DEPARTMENT	DRAWN BY	260CT22
			PIERCE		PITTSFORD, NEW YORK	CHECKED BY	PHA
			MODEL	DWG NO.	37653AD	SHEET SIZE	SHEET NO.
REV	DATE	BY	CH	ENFORCER		D	1 OF 1