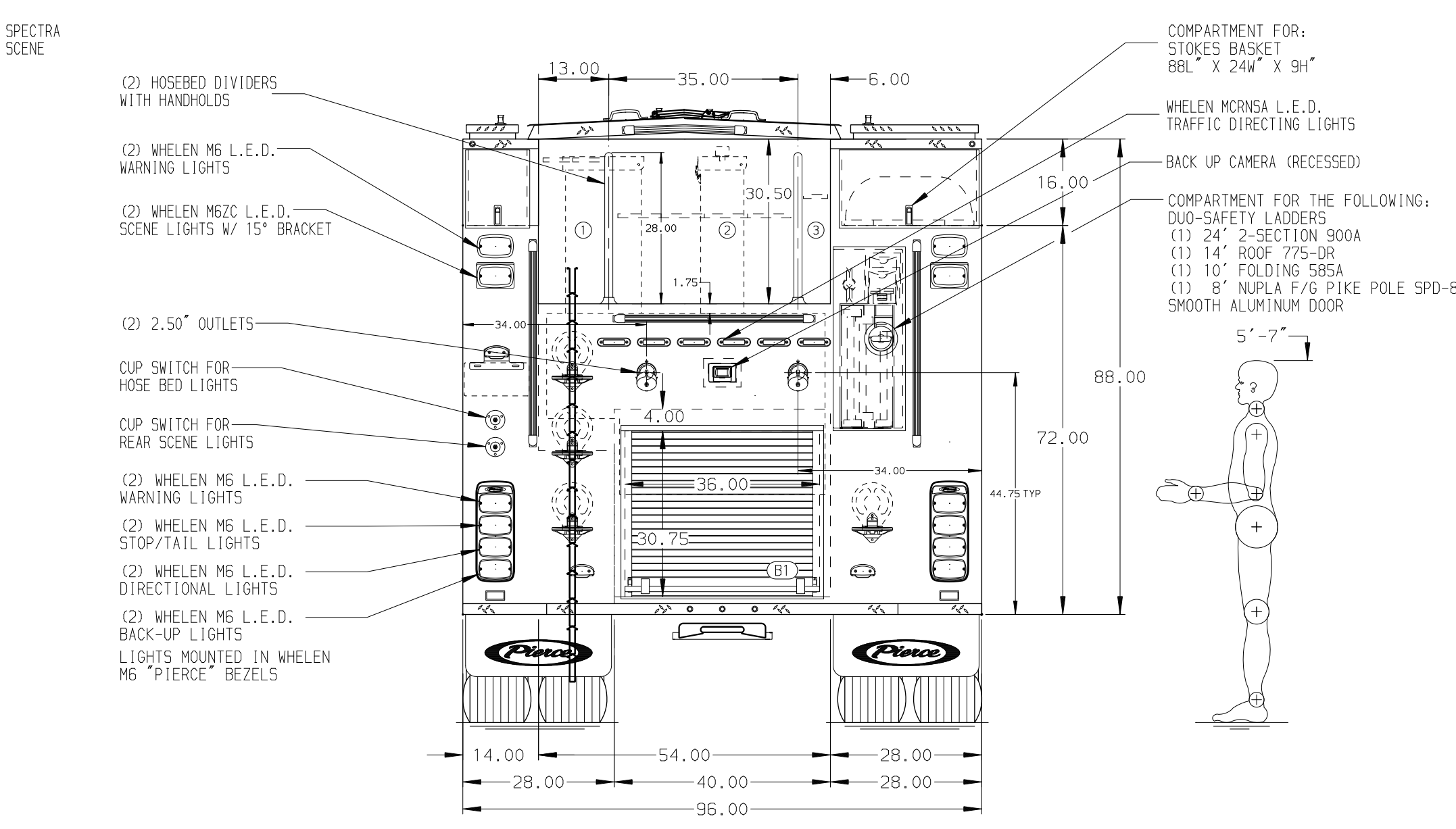
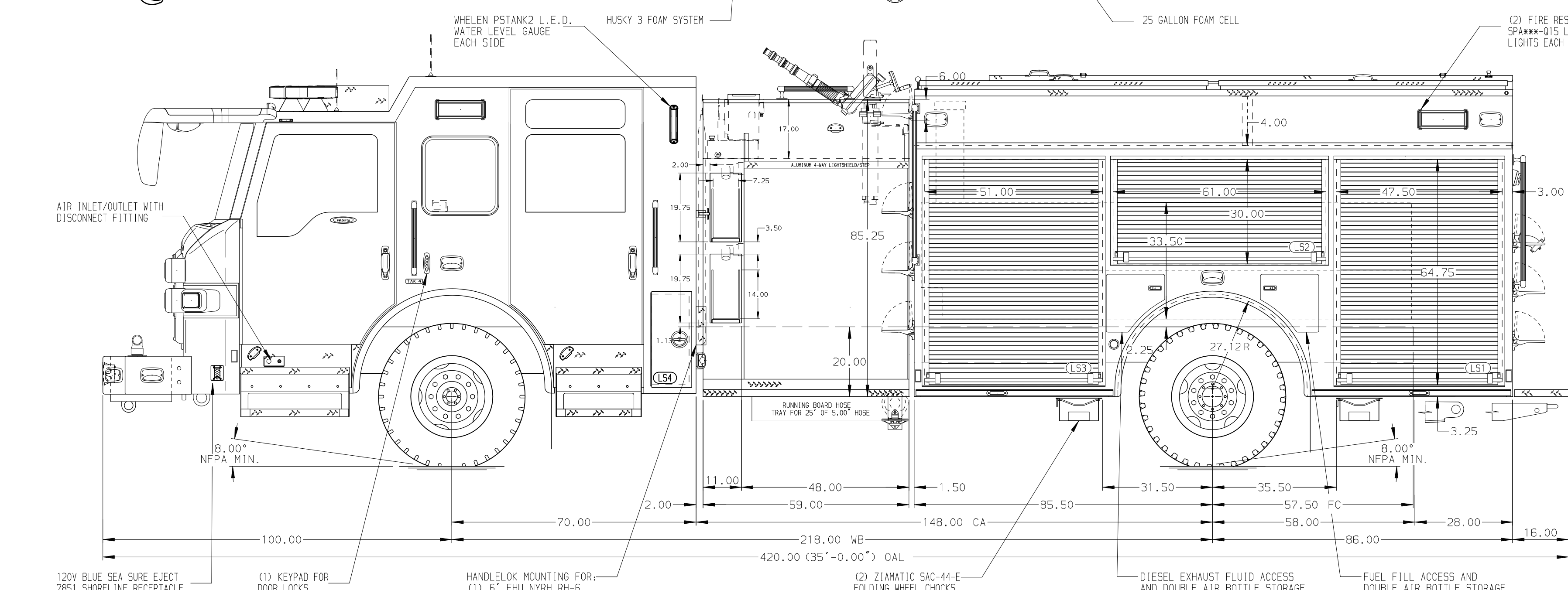


- HOSEBED CAPACITIES
- ① - 800' OF 3.00" KEY B16-10 HOSE
 - ② - 1000' OF 5.00" D.J. POLY HOSE
 - ③ - 300' OF 2.50" D.J. POLY HOSE



ALUMINUM BODY

SIDE ROLL AND FRONTAL IMPACT PROTECTION

NOTE
 DIMENSIONS SHOWN ARE APPROXIMATE AND ARE SUBJECT TO MINOR DEVIATIONS AS MAY OCCUR OR BE NECESSARY IN CONSTRUCTION. MINOR DETAILS NOT SHOWN.

1. KUSSMAUL AIR COMPRESSOR LOCATED BEHIND DRIVER'S SEAT
2. BATTERY CHARGER LOCATED BEHIND DRIVER'S SEAT
3. BATTERY CHARGE INDICATOR BEHIND DRIVER'S SEAT DISPLAYED THROUGH WINDOW
4. 12V L.E.D. LIGHT STRIPS ON UNDERSIDE OF HOSE BED COVER
5. FIVE FULL WIDTH/DEPTH ADJUSTABLE SHELVES LOCATED PER SHOP ORDER
6. TWO SWING-OUT TOOLBOARDS LOCATED PER SHOP ORDER
7. TWO FLOOR MOUNTED SLIDE-OUT TRAYS WITH 2" SIDES LOCATED PER SHOP ORDER
8. SIX SHELF TRACKS LOCATED PER SHOP ORDER
9. THREE PEGBOARDS MOUNTED ON WALLS PER SHOP ORDER
10. REAR COMPARTMENT PARTITION LOCATED BETWEEN B1/R51

11. SIX 5/8 DRIP PANS LOCATED PER SHOP ORDER
12. TWO TILT/SLIDE-OUT TRAYS LOCATED PER SHOP ORDER
13. TWO FLOOR MOUNTED SLIDE-OUT TRAYS LOCATED PER SHOP ORDER
14. ONE SLIDE-OUT PEGBOARD TOOLBOARD LOCATED PER SHOP ORDER
15. ONE SPECIAL SIZE SHELF LOCATED PER SHOP ORDER
16. ONE VERTICAL PARTITION LOCATED PER SHOP ORDER

CUSTOMER APPROVAL			
APPROVED BY:		CHASSIS DATA	TITLE
DATE:		MAKE	FOR
		PIERCE	MODEL
			REV
			DATE
			BY
			CH
			VELOCITY FR

		JOB NO.	37701-01-02
		SCALE	DATE
PIERCE MANUFACTURING INC.		TITLE	2000-D-775P, 750G WATER W/ 25G FOAM, 171" FH/FDLR LADDERS THROUGH BODY, (2) SPEEDLAYS, DELUGE
		FOR	BAYTOWN FIRE AND RESCUE BAYTOWN, TEXAS
		CHECKED BY	WKL
		SHEET SIZE	SHEET NO.
37701AD		DWG NO.	D
			1 OF 1