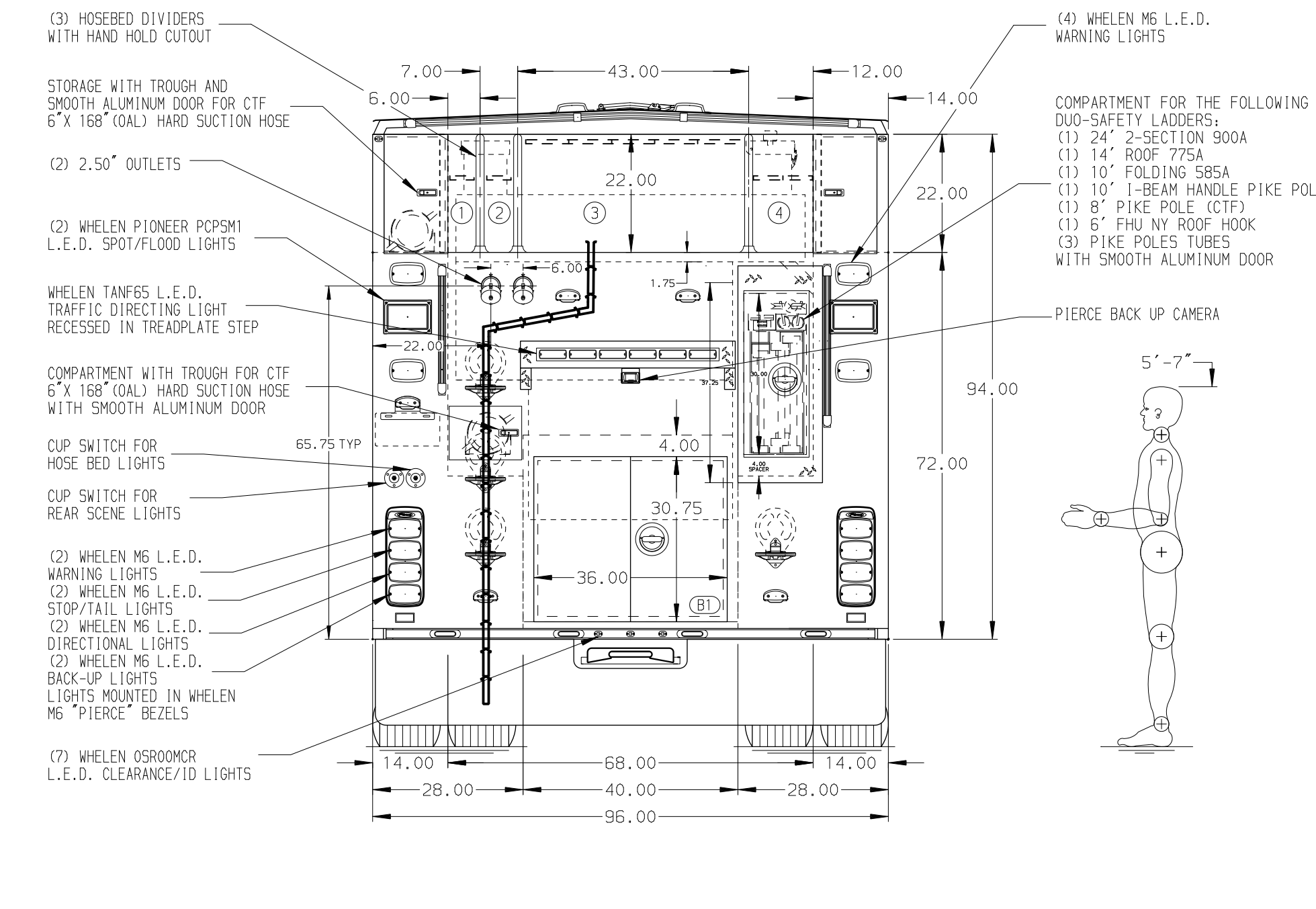
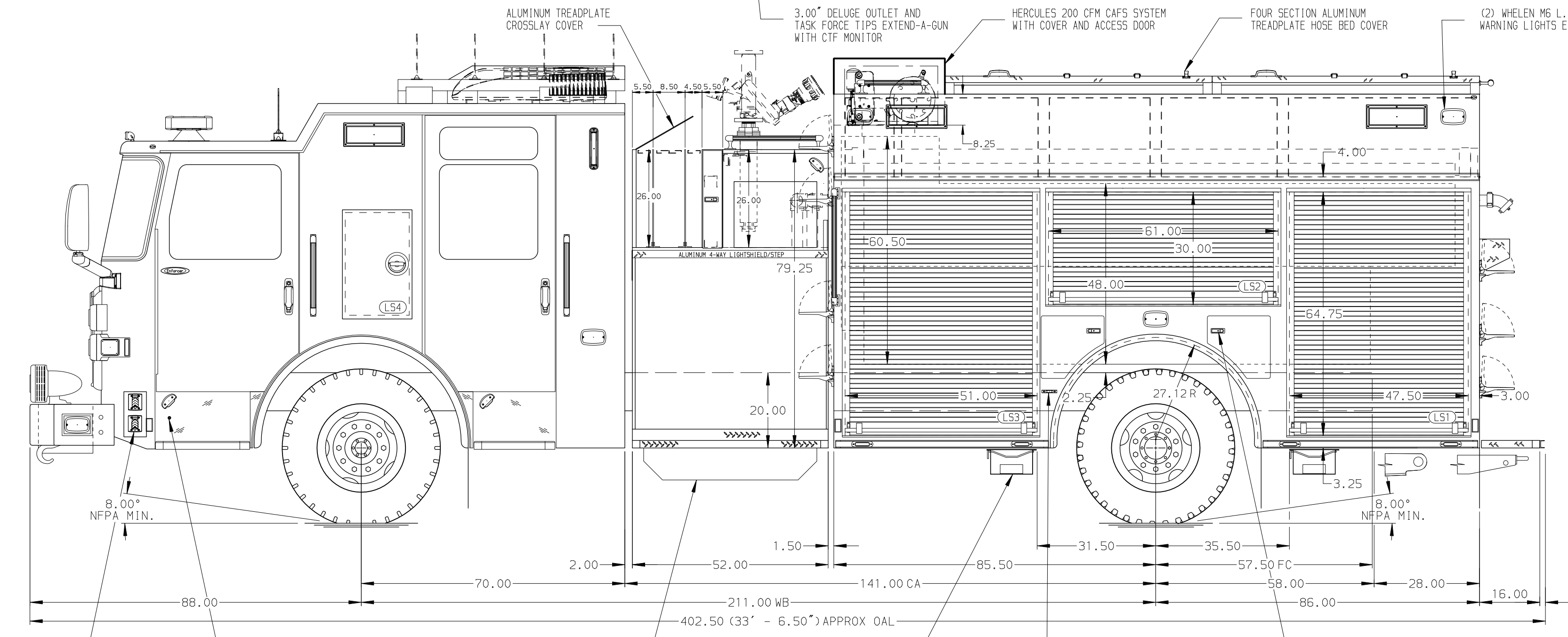


- HOSEBED CAPACITIES**
- ① - 200' OF 2.50\"/>



ALUMINUM BODY

MAXIMUM O.A.L. 403.00"

SIDE ROLL PROTECTION

NOTE
DIMENSIONS SHOWN ARE APPROXIMATE AND ARE SUBJECT TO MINOR DEVIATIONS AS MAY OCCUR OR BE NECESSARY IN CONSTRUCTION. MINOR DETAILS NOT SHOWN.

- 1. DUAL L.E.D. LIGHT STRIPS LOCATED IN HOSE BED
- 2. FOAM PRO 1600 SINGLE AGENT FOAM SYSTEM LOCATED PER SHOP ORDER

CUSTOMER APPROVAL			
APPROVED BY:			
DATE:			
CHASSIS DATA	TITLE	2000-D-1275P, 1250G WATER W/ 25G FOAM, 171\"/>	
MAKE	FOR	SOUTH MONTGOMERY COUNTY FD - MCESD #8	
PIERCE		CONROE, TEXAS	
MODEL	DWG NO.	37702AD-SH1	
ENFORCER			

Pierce MANUFACTURING INC.		JOB NO.	37702
SCALE	1:24	DATE	
DRAWN BY	JJB	DATE	22DEC22
CHECKED BY	WKL	DATE	22DEC22
SHEET SIZE	D	SHEET NO.	1 OF 2