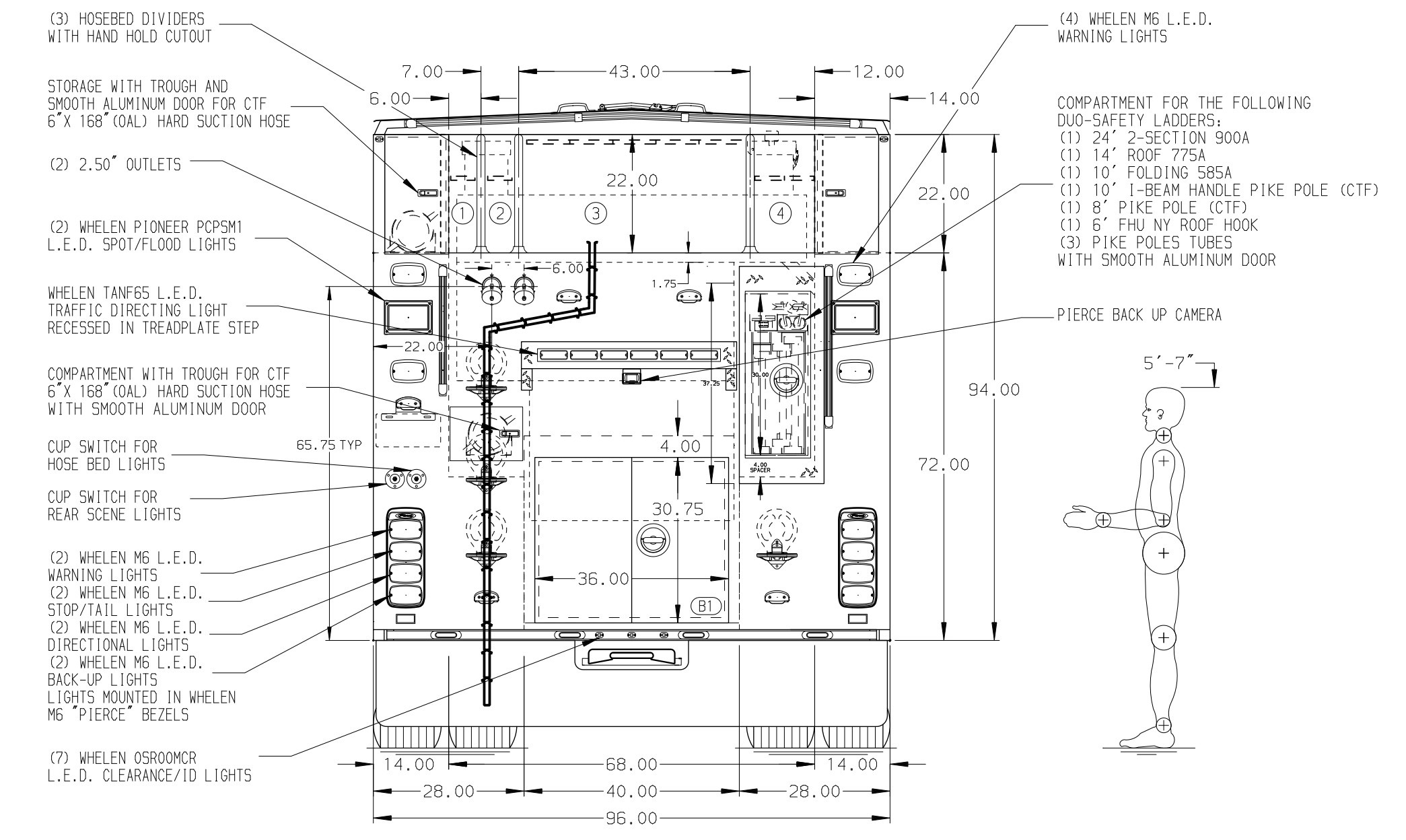
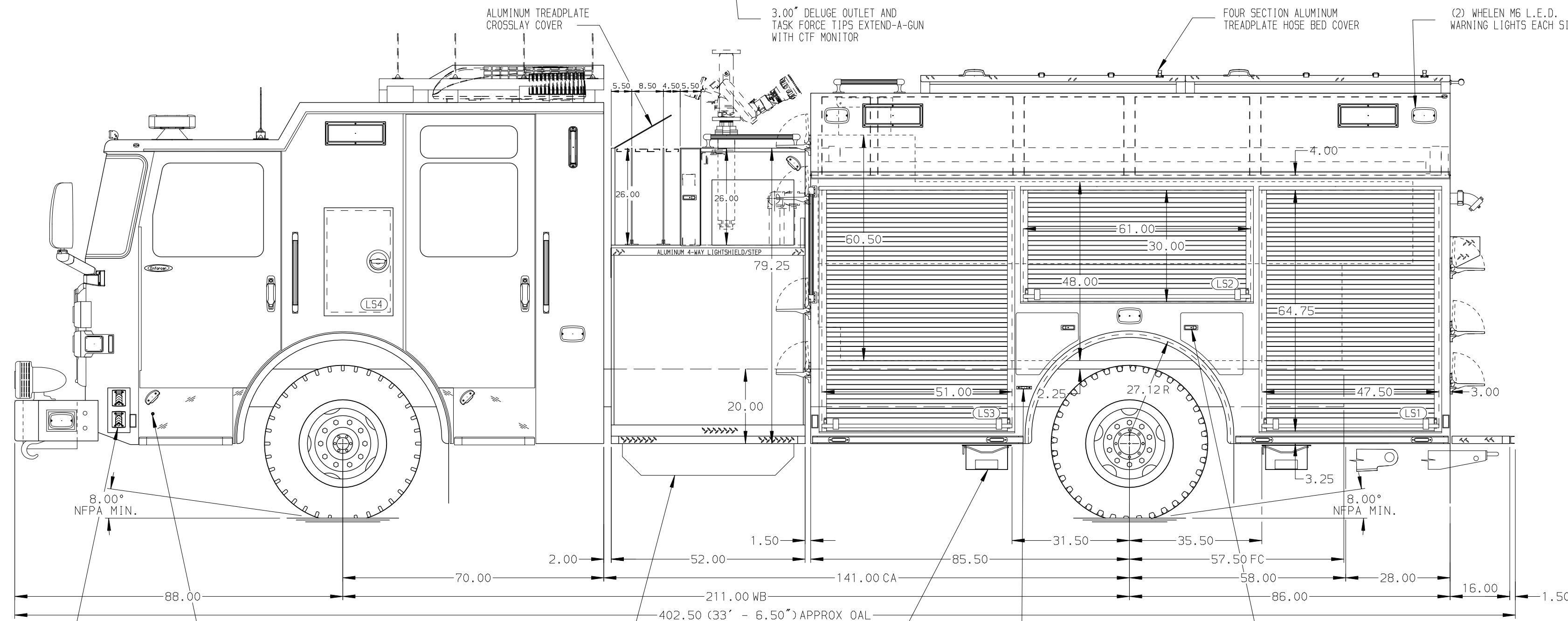


- HOSEBED CAPACITIES**
- ① - 200' OF 2.50" D.J. POLY HOSE
 - ② - 300' OF 2.50" D.J. POLY HOSE
 - ③ - 1500' OF 5.00" D.J. POLY HOSE
 - ④ - 400' OF 3.00" D.J. POLY HOSE



ALUMINUM BODY

MAXIMUM O.A.L. 403.00"

SIDE ROLL PROTECTION

NOTE
DIMENSIONS SHOWN ARE APPROXIMATE AND ARE SUBJECT TO MINOR DEVIATIONS AS MAY OCCUR OR BE NECESSARY IN CONSTRUCTION. MINOR DETAILS NOT SHOWN.

- 1. DUAL L.E.D. LIGHT STRIPS LOCATED IN HOSE BED
- 2. FOAM PRO 1600 SINGLE AGENT FOAM SYSTEM LOCATED PER SHOP ORDER

CUSTOMER APPROVAL				
APPROVED BY:				
DATE:				
REV	DATE	BY	CH	ENFORCER

Pierce MANUFACTURING INC.		JOB NO.	37703
TITLE	2000-D-1275P, 1250G WATER W/ 25G FOAM, 171" FOLDR LADDERS BTWN TANK& SS, (3)CROSSLAYS, DELUGE, COLEMAN	SCALE	1:24 DATE
FOR	SOUTH MONTGOMERY COUNTY FD - MCESD #8 CONROE, TEXAS	DRAWN BY	JJB 02JAN23
DWG NO.	37703AD-SH1	CHECKED BY	WKL 02JAN23
		SHEET SIZE	D SHEET NO. 1 OF 2