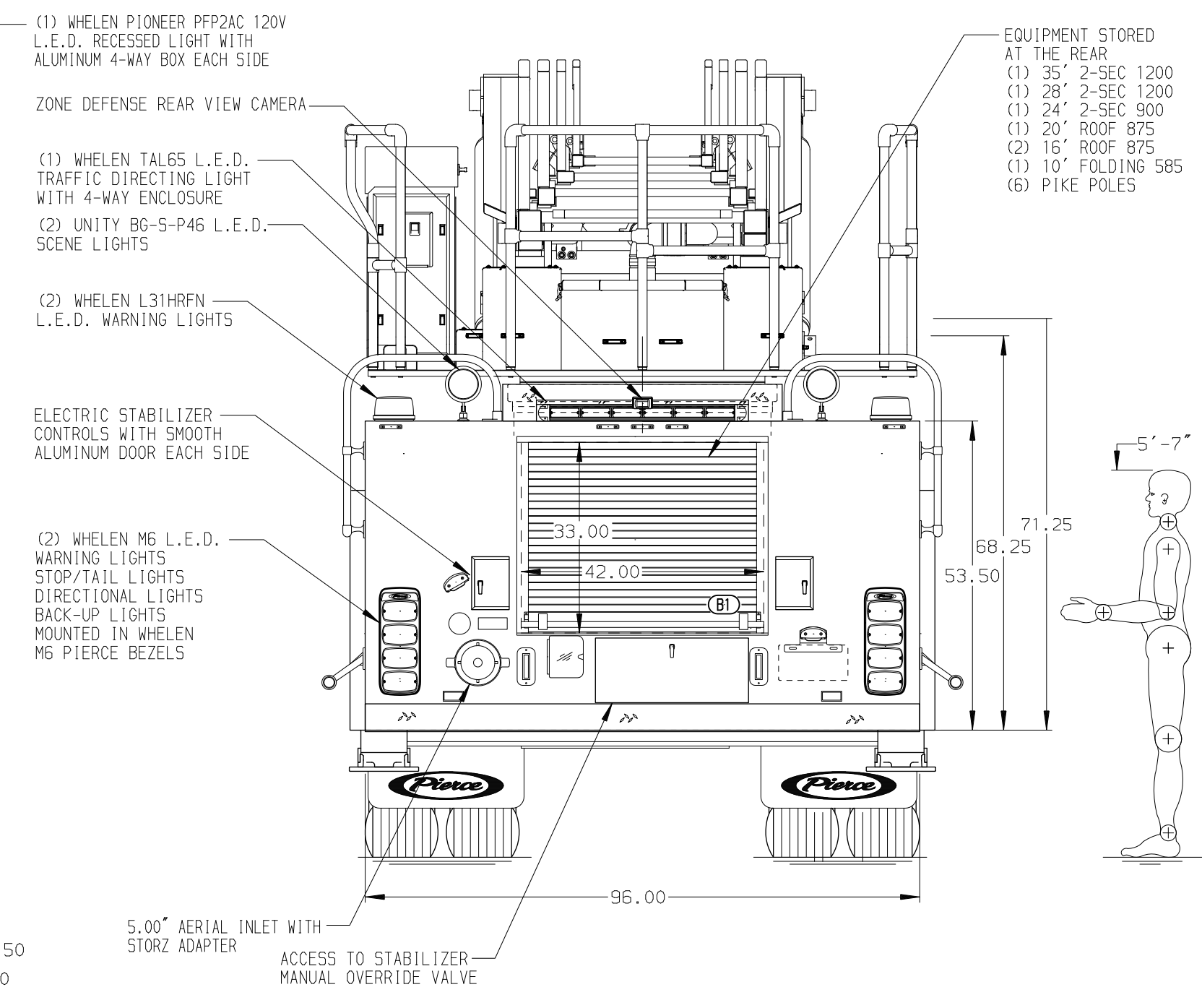
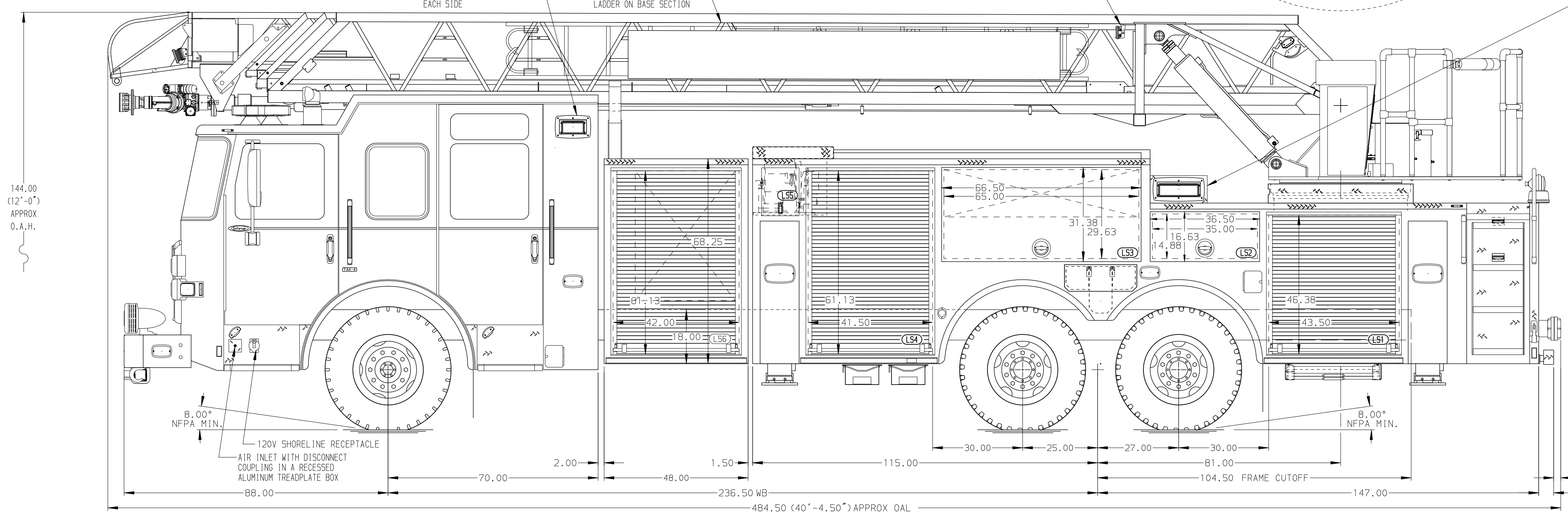


BODY
 Aerial, HD Ladder 105', Alum Body
COMPT, LEFT SIDE FRONT
 FH/FD RollUp Forward w/o Chute
COMPT, LEFT SIDE REAR
 FH/FD RollUp and Lift-up Rearward
COMPT, RIGHT SIDE FRONT
 FH/FD RollUp Forward w/o Chute
COMPT, RIGHT SIDE REAR
 FH/FD RollUp Rearward



CHASSIS Enforcer Chassis ENGINE 510 HP Paccor MX13 Engine	CAB 7010 Notched Enforcer Cab BUMPER 19" Extended Painted Steel	AXLE, FRONT, CUSTOM 22,800 Lb TAK-4 Axle AXLE, REAR 48,000 Lb Meritor Axle	TRANSMISSION Allison 6th Gen, 4000 EVS P GENERATOR Harrison 10kw MCR Hydraulic	COMPARTMENT-NO PUMP 48" Wide w/RollUp Door	-
--	--	---	---	--	---

CUSTOMER APPROVAL
 APPROVED BY: _____
 DATE: _____

PIERCE MANUFACTURING INC.	JOB NO.	37714
	SCALE	DATE
	DRAWN BY	JGA
	CHECKED BY	KBO
	SHEET SIZE	D
	SHEET NO.	1 OF 1

NOTE
 DIMENSIONS SHOWN ARE APPROXIMATE AND ARE SUBJECT TO MINOR DEVIATIONS AS MAY OCCUR OR BE NECESSARY IN CONSTRUCTION. MINOR DETAILS NOT SHOWN.

- PACCOR DEF TANK MOUNTED UNDER CAB ON THE DRIVER'S SIDE
- BATTERY CHARGER/COMPRESSOR LOCATED IN COMPARTMENT PER ORDER
- BATTERY CHARGER INDICATOR LOCATED ON DRIVER'S SEAT RISER
- STABILIZER COMPARTMENTS MODIFIED FOR 18" GROUND PENETRATION
- 5/STL DRIP PAN/GUARD FOR ROLL-UP DOOR LOCATED PER ORDER
- EIGHT ADJUSTABLE FULL WIDTH/FULL DEPTH SHELVES IN COMPARTMENT PER ORDER
- ONE ADJUSTABLE 2-WAY SLIDE-OUT TRAY WITH 4" SIDES IN COMPARTMENT PER ORDER
- TWO ADJUSTABLE TILTING SLIDE-OUT TRAYS IN COMPARTMENT PER ORDER
- SIX FLOOR MOUNTED SLIDE-OUT TRAYS IN COMPARTMENT PER ORDER
- ONE ADJUSTABLE TOOLBOARD MOUNTED ON A 2-WAY TRAY IN COMPARTMENT PER ORDER
- CIRCUIT BREAKER PANEL IN COMPARTMENT PER ORDER
- ONE HANWAY ELECTRIC REWIND CORD REEL MODEL 1618-17-18 WITH 200' OF 10/3 CABLE IN COMPARTMENT PER ORDER
- 120V DUPLEX RECEPTACLE LOCATED IN COMPARTMENT PER ORDER
- TRIDENT FOLDING STEPS ON AERIAL DEVICE
- STABILIZERS MODIFIED FOR 18" GROUND PENETRATION
- L.E.D. LIGHTING ON AERIAL LADDER SECTIONS
- 120V POWER TO AERIAL TIP
- 2-WAY INTERCOM SYSTEM BETWEEN AERIAL SECTION AND TURNTABLE
- AERIAL PEDESTAL RAISED 3.00"
- LIFTING EYE RESCUE ATTACHMENT AT AERIAL TIP
- AERIAL LIMITED RETRACTION NOT REQUIRED

(MAX. OAL = 482.00" (40'-2.00") - EXCEEDED)

CHASSIS DATA	TITLE	105' AERIAL LADDER AND BODY ASSEMBLY NO PUMP/NO TANK
MAKE	FOR	INDIANAPOLIS FIRE DEPARTMENT INDIANAPOLIS, IN
MODEL	DWG NO.	37714AD
REV	DATE	BY
CH		