

BODY

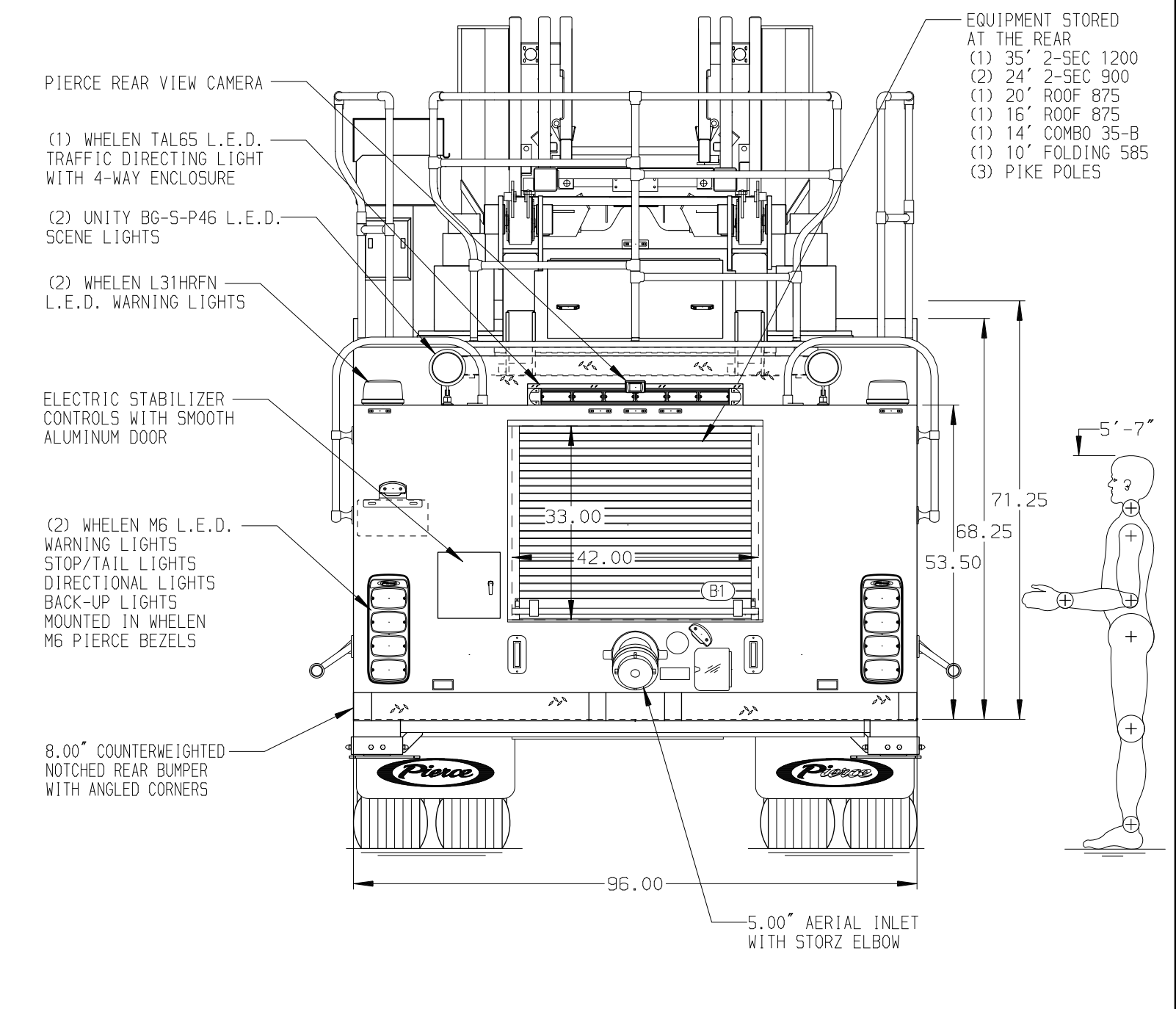
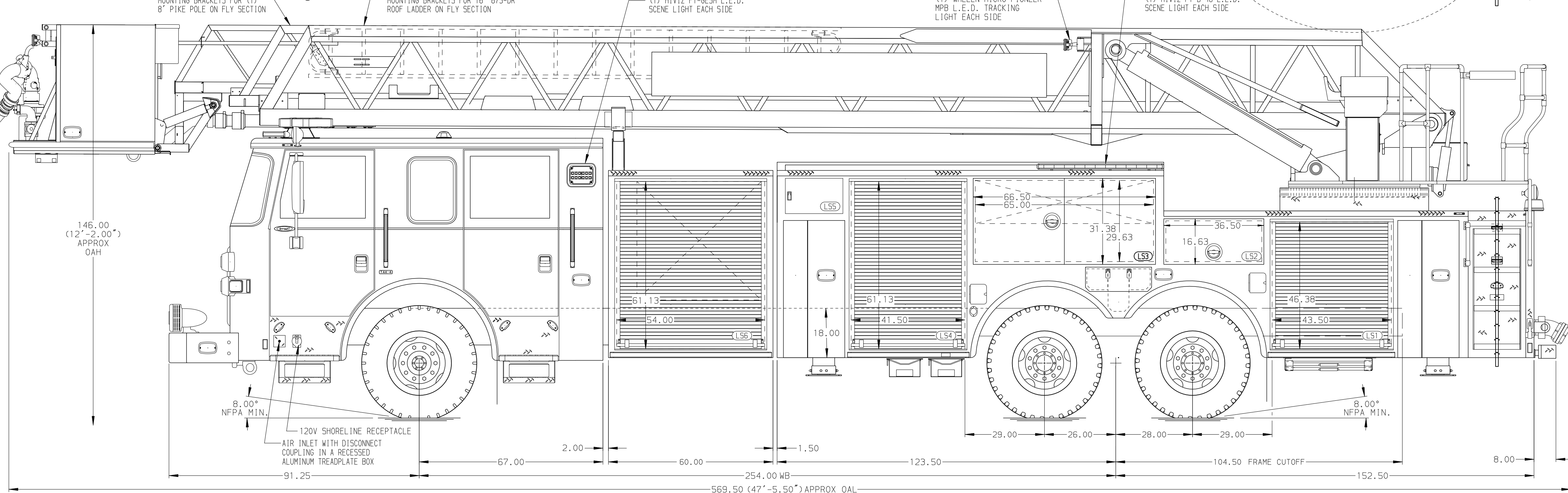
100' Steel Platform Alum Body

COMPT, LEFT SIDE FRONT
FH/FD RollUp and Lap w/o Chute

COMPT, LEFT SIDE REAR
FH/FD RollUp and Lift-up

COMPT, RIGHT SIDE FRONT
FH/FD RollUp and Lap w/o Chute

COMPT, RIGHT SIDE REAR
FH/FD RollUp and Lift-up



CHASSIS Arrow XT Chassis 565 HP Cummins X15 Engine	CAB 6700 Arrow XT Cab 22' Extended Painted Steel	AXLE, FRONT, CUSTOM 22,800 Lb TAK-4 Axle	TRANSMISSION Allison 6th Gen, 4000 EVS P	COMPARTMENT-NO PUMP 60" Wide w/RollUp Door	-
ENGINE	BUMPER	AXLE, REAR 58,000 Lb Meritor Axle	GENERATOR Smart Power ER 6.2kw Hydraulic		

NOTE

DIMENSIONS SHOWN ARE APPROXIMATE AND ARE SUBJECT TO MINOR DEVIATIONS AS MAY OCCUR OR BE NECESSARY IN CONSTRUCTION. MINOR DETAILS NOT SHOWN.

1. BATTERY CHARGER/COMPRESSOR LOCATED IN COMPARTMENT PER ORDER
2. BATTERY CHARGE INDICATOR LOCATED NEAR DRIVER'S SEAT RISER WITH BRACKET
3. 5/STL DRIP PAN/GUARD FOR ROLL-UP DOOR LOCATED PER ORDER
4. TEN ADJUSTABLE FULL WIDTH/FULL DEPTH SHELVES IN COMPARTMENT PER ORDER
5. ONE ADJUSTABLE 2-WAY SLIDE-OUT TRAY WITH 4" SIDES IN COMPARTMENT PER ORDER
6. TWO FLOOR MOUNTED SLIDE-OUT TRAYS IN COMPARTMENT PER ORDER
7. AERIAL LIMITED RETRACTION NOT REQUIRED
8. 3"-11" LIFE/COMBO BRACKETS AT AERIAL BASKET
9. GTT 794 L.E.D. OPTICOM TRAFFIC LIGHT CONTROLLER MOUNTED ON FRONT OF BASKET
10. CIRCUIT BREAKER PANEL IN COMPARTMENT PER ORDER
11. FOUR 120V DUPLEX RECEPTACLES LOCATED IN COMPARTMENTS PER ORDER
12. HOSE STORAGE BOX ON RIGHT SIDE OF BASKET FOR 100' OF 1.75" D.I. POLY HOSE
13. L.E.D. LIGHTING ON AERIAL LADDER SECTIONS
14. 120V POWER TO AERIAL BASKET
15. AERIAL PEDESTAL RAISED 3.00"

Pierce MANUFACTURING INC.

JOB NO. 37715

SCALE 1:24 DATE

DRAWN BY JGA 02AUG22

CHECKED BY KBO 4AUG22

SHEET SIZE D SHEET NO. 1 OF 1

CHASSIS DATA

REV	DATE	BY	CH	ARROW XT
10MAR23	ANZ	KBO		
30JAN23	SHU	KBO		
10NOV22	SHU	KBO		

TITLE 100 AERIAL PLATFORM & BODY ASSEMBLY NO PUMP/NO TANK

FOR INDIANAPOLIS FIRE DEPARTMENT INDIANAPOLIS, IN

DWG NO. 37715AD