

**PUMPER
BODY**

Medium Aluminum 2nd Gen Pumper

CHASSIS

Sober FR Chassis

**CHASSIS
AXLE, FRONT, CUSTOM**

18,000 Lb Dana Axle

AXLE, REAR

24,000 Lb Dana Axle

ENGINE

450 HP Cummins L9 Engine

TRANSMISSION

Allison 5th Gen, 3000 EVS P

BUMPER

26" Extended Painted Steel

CAB

7010 Sober FR Cab

**BODY
WATER TANK**

500 Gallon New York Style Water Tank

COMPT, PUMPER, REAR

30.75" FF RollUp 41.88" Deep Flush Rear Compt

COMPT, PUMPER, LEFT SIDE

152" RollUp Full Height Front & Rear FDLER

COMPT, PUMPER, RIGHT SIDE

152" RollUp, 3/4 Height Front & Rear, Lap Broom, FDLER

**FIRE SUPPRESSION
PUMPHOUSE**

45" Control Zone Top Mount

PUMP

2000 GPM WATEROUS CMU

CROSSLAYS, 1.50"

(1) 1.50" Special Capacity

CROSSLAYS, 2.50"

(1) 2.50" Standard Capacity

SPEEDLAYS

SpeedLays Not Required

GENERATOR

Generator Not Required

Foam System

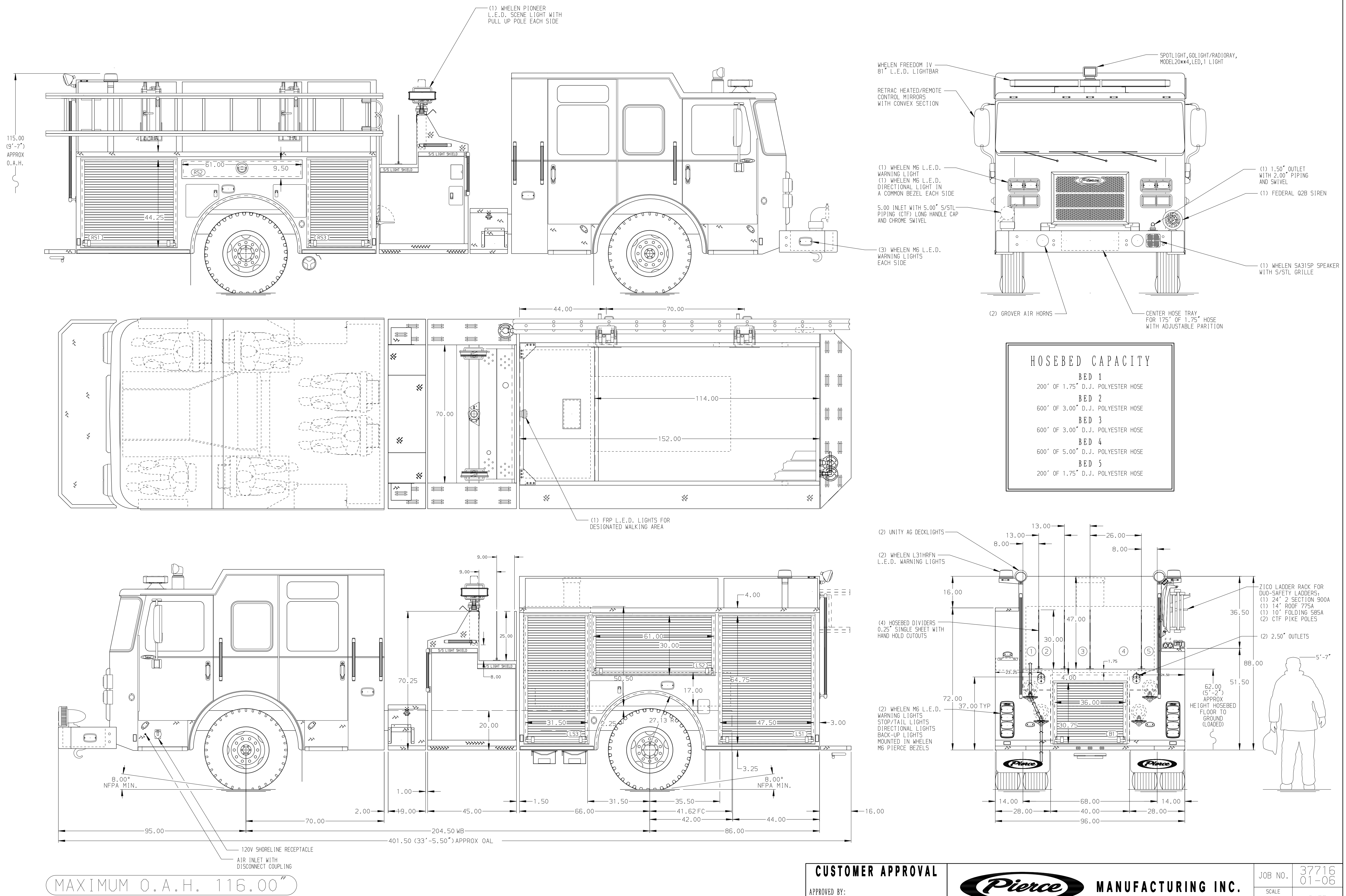
Foam System Not Required

Foam Cell

Foam Cell Not Required

NOTE

DIMENSIONS SHOWN ARE APPROXIMATE AND ARE SUBJECT TO MINOR DEVIATIONS AS MAY OCCUR OR BE NECESSARY IN CONSTRUCTION. MINOR DETAILS NOT SHOWN.



HOSEBED CAPACITY

BED 1	200' OF 1.75" D.J. POLYESTER HOSE
BED 2	600' OF 3.00" D.J. POLYESTER HOSE
BED 3	600' OF 3.00" D.J. POLYESTER HOSE
BED 4	600' OF 5.00" D.J. POLYESTER HOSE
BED 5	200' OF 1.75" D.J. POLYESTER HOSE

CUSTOMER APPROVAL				Pierce MANUFACTURING INC.		JOB NO.	37716 01-06
APPROVED BY: _____				TITLE		SCALE	DATE
DATE: _____				Pierce Pumper Approval Drawing		1:24	
				MAKE		DRAWN BY	02MAR22
				PIERCE		COL	
				MODEL		CHECKED BY	02MAR22
				SABER FR		MMF	
				DWG NO.		SHEET SIZE	SHEET NO.
				37716AD		D	1 OF 1