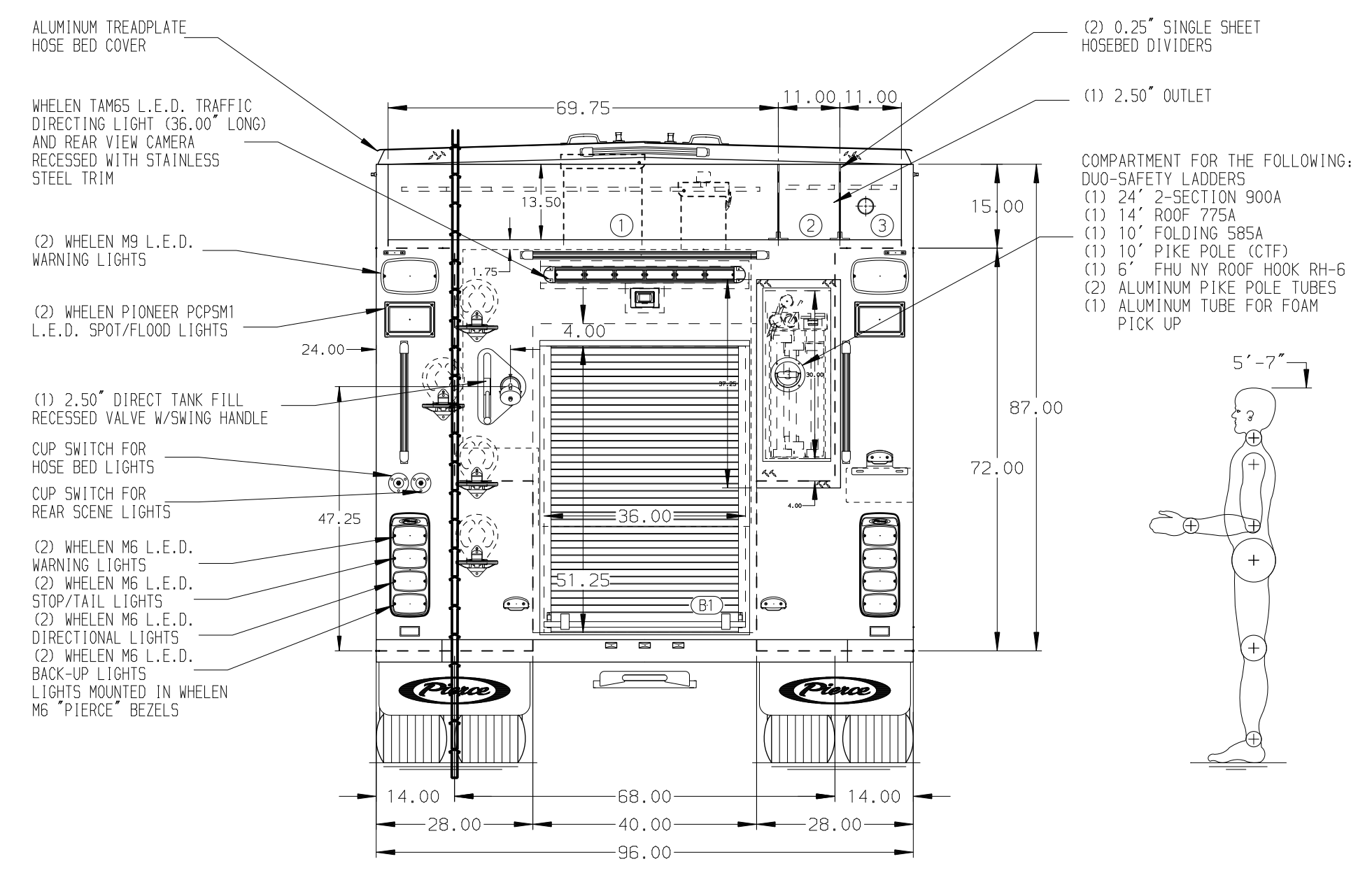
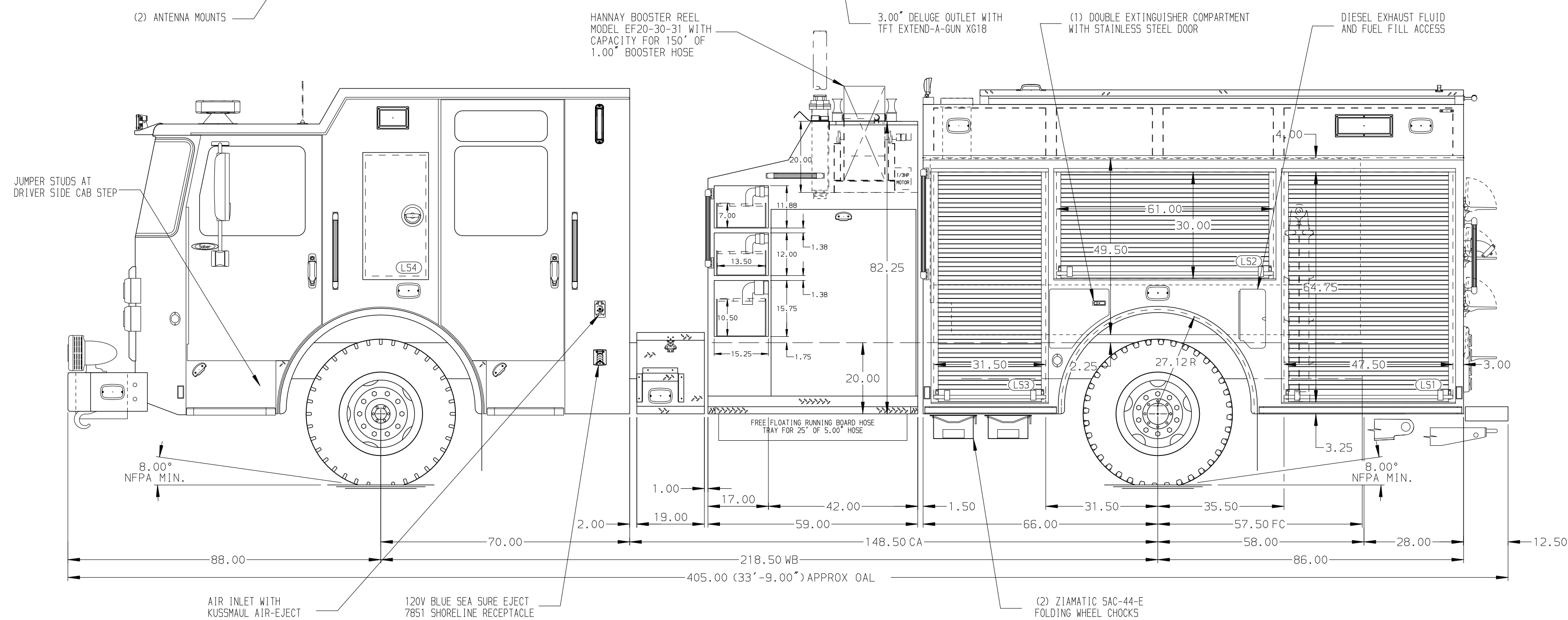


- HOSEBED CAPACITIES
- ① - 1000' OF 5.00" D.J. POLY HOSE
 - ② - 250' OF 2.50" D.J. POLY HOSE
 - ③ - 250' OF 2.50" D.J. POLY HOSE



ALUMINUM BODY

NOTE
DIMENSIONS SHOWN ARE APPROXIMATE AND ARE SUBJECT TO MINOR DEVIATIONS AS MAY OCCUR OR BE NECESSARY IN CONSTRUCTION. MINOR DETAILS NOT SHOWN.

CUSTOMER APPROVAL				
APPROVED BY:				
DATE:				
CHASSIS DATA	TITLE	1750-D-1030P, 1000G WATER, 30G FOAM, 152" FDLER BODY LADDERS BTWN TANK & SS, (3) SPEEDLAYS, DELUGE		
MAKE	FOR	CITY OF WHITEHOUSE, WHITEHOUSE, TEXAS		
MODEL	DWG NO.	37718AD		
REV	DATE	BY	CH	SABER FR

Pierce MANUFACTURING INC.		JOB NO.	37718
SCALE	1:24	DATE	
DRAWN BY	JJB	DATE	25APR22
CHECKED BY	WKL	DATE	25APR22
SHEET SIZE	D	SHEET NO.	1 OF 1