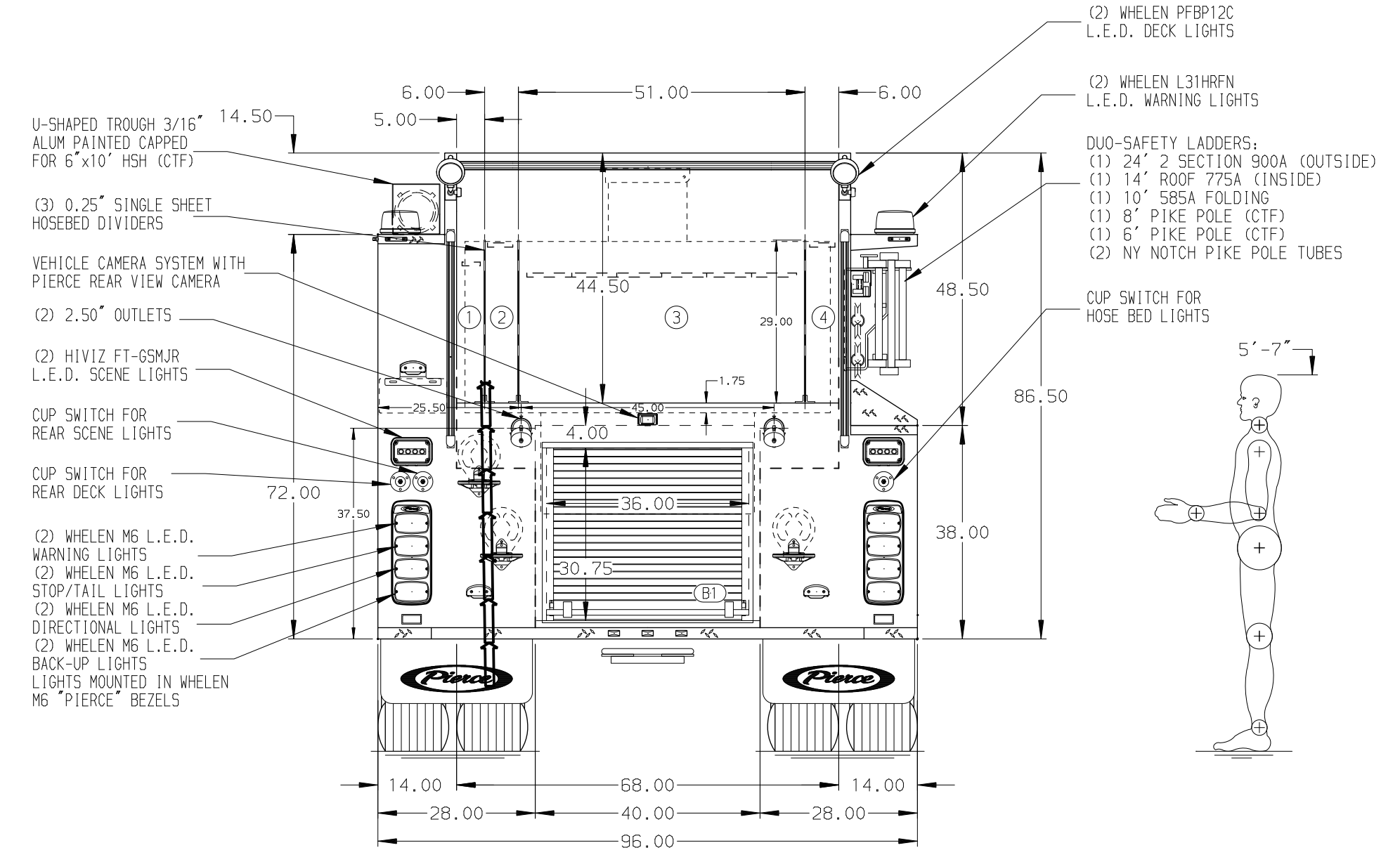
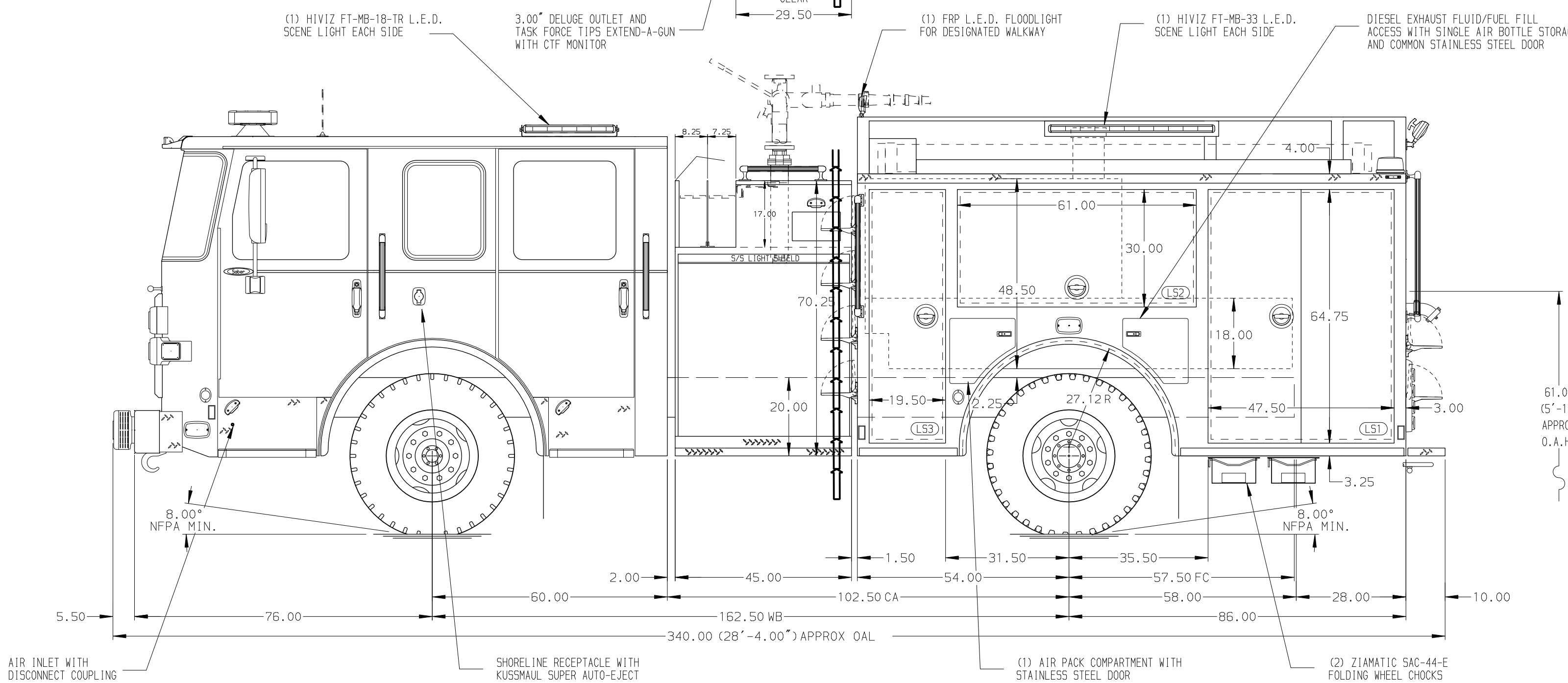


- HOSEBED CAPACITIES
- ① - 200' OF 1.75" D.J. POLY HOSE
  - ② - 200' OF 2.50" D.J. POLY HOSE
  - ③ - 1000' OF 5.00" L.D.H. HOSE
  - ④ - 200' OF 2.50" D.J. POLY HOSE



ALUMINUM BODY

NOTE  
DIMENSIONS SHOWN ARE APPROXIMATE AND ARE SUBJECT TO MINOR DEVIATIONS AS MAY OCCUR OR BE NECESSARY IN CONSTRUCTION. MINOR DETAILS NOT SHOWN.

CUSTOMER APPROVAL				Pierce MANUFACTURING INC.		JOB NO.	37746		
APPROVED BY: _____						SCALE	1:24	DATE	
DATE: _____						DRAWN BY	JJB	17MAY22	
CHASSIS DATA				TITLE	1750-D-750P, 750 GAL. WATER TANK, 140" FDLR PUMPER RS LADDER BRACKET, (2) XLAYS, DELUGE, SIDE CONTROL				
MAKE				FOR	PITCAIRN HOSE COMPANY #1 PITCAIRN, PENNSYLVANIA				
MODEL				DWG NO.	37746AD				
REV	DATE	BY	CH	SABER FR					
					SHEET SIZE	D		SHEET NO.	1 OF 1