

Pumper, PUC

BODY
Pumper, PUC, Aluminum
CHASSIS
Enforcer Chassis, PUC

CHASSIS
AXLE, FRONT, CUSTOM
18,000 Lb Dana Axle

AXLE, REAR
27,000 Lb Dana Axle

ENGINE
400 HP Cummins L9 Engine

TRANSMISSION
Allison 5th Gen, 3000 EVS P

BUMPER
19" Extended Painted Steel

CAB
7010 Enforcer Cab, PUC

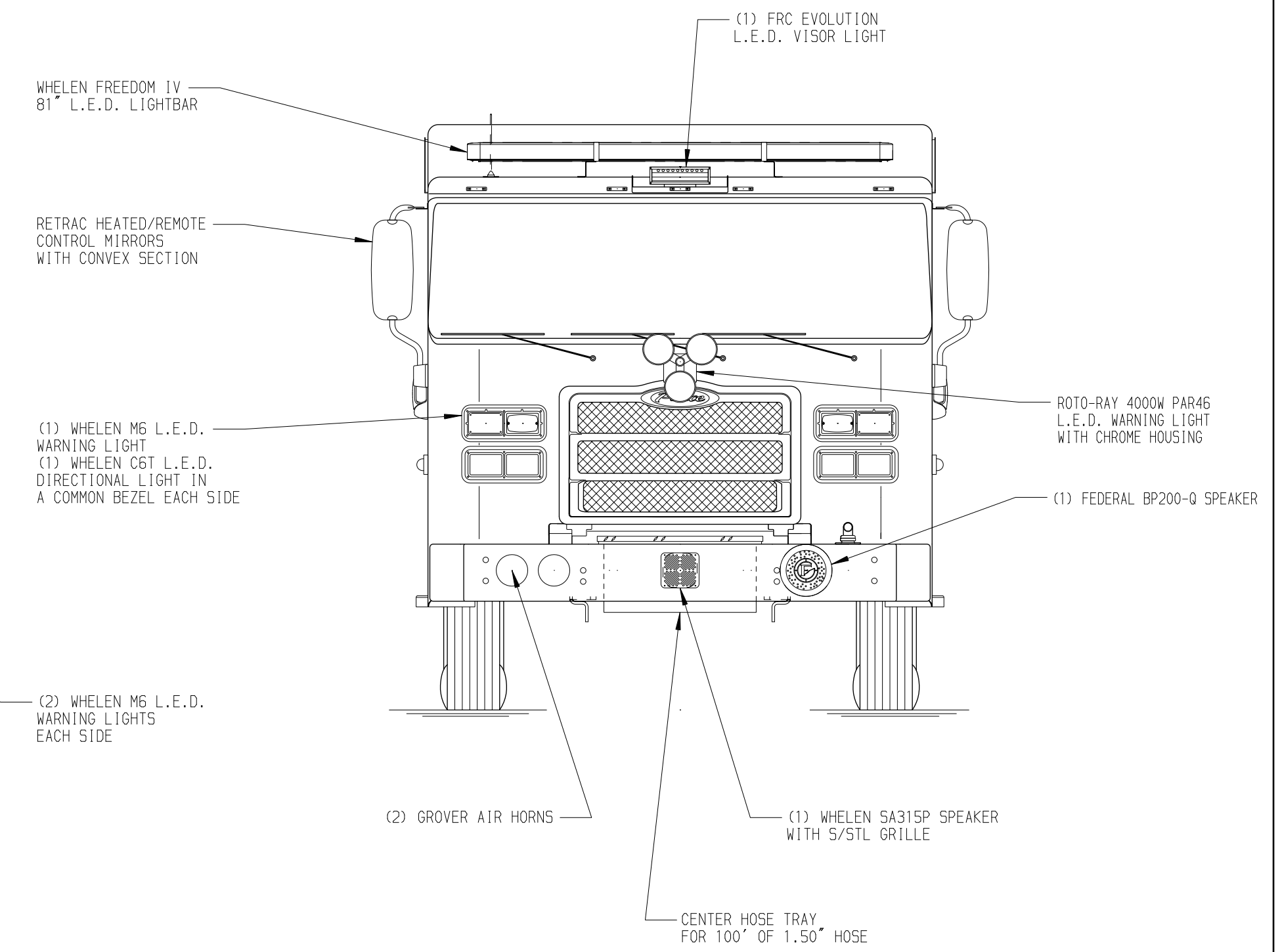
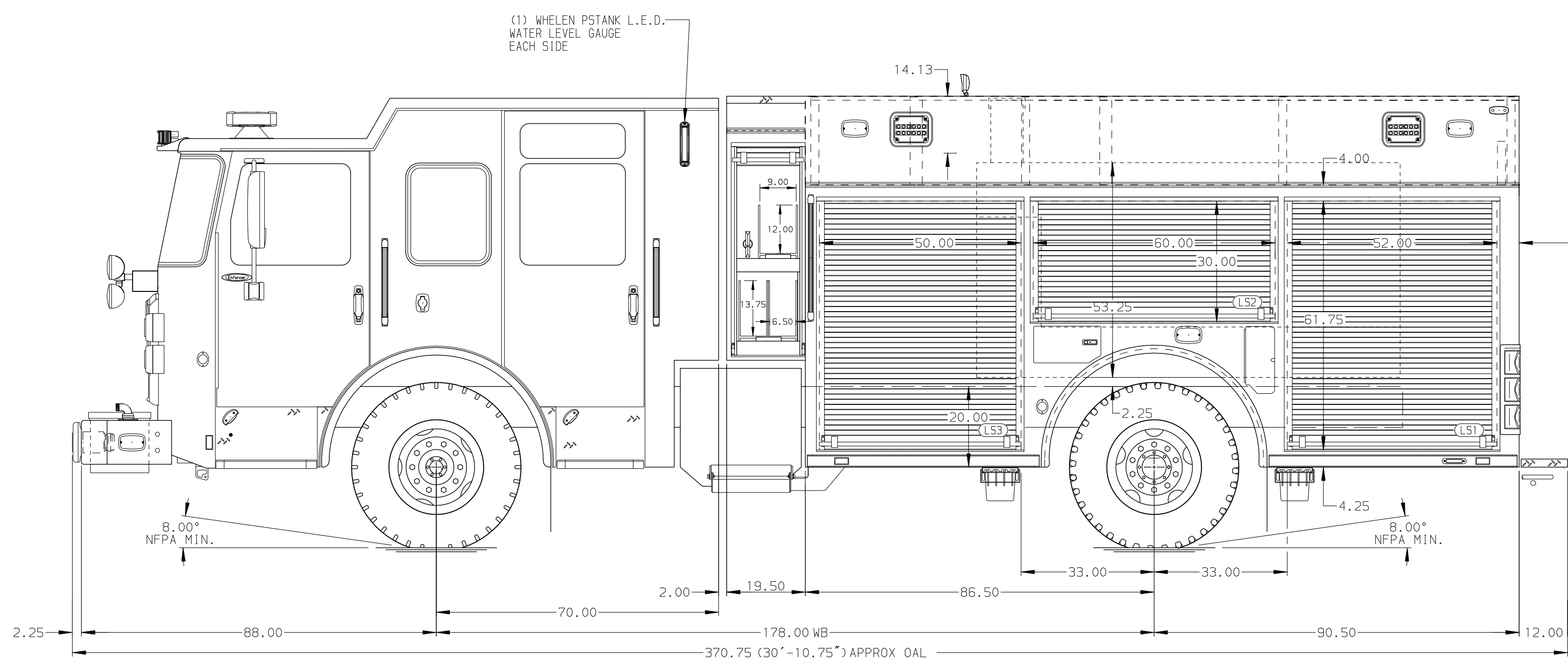
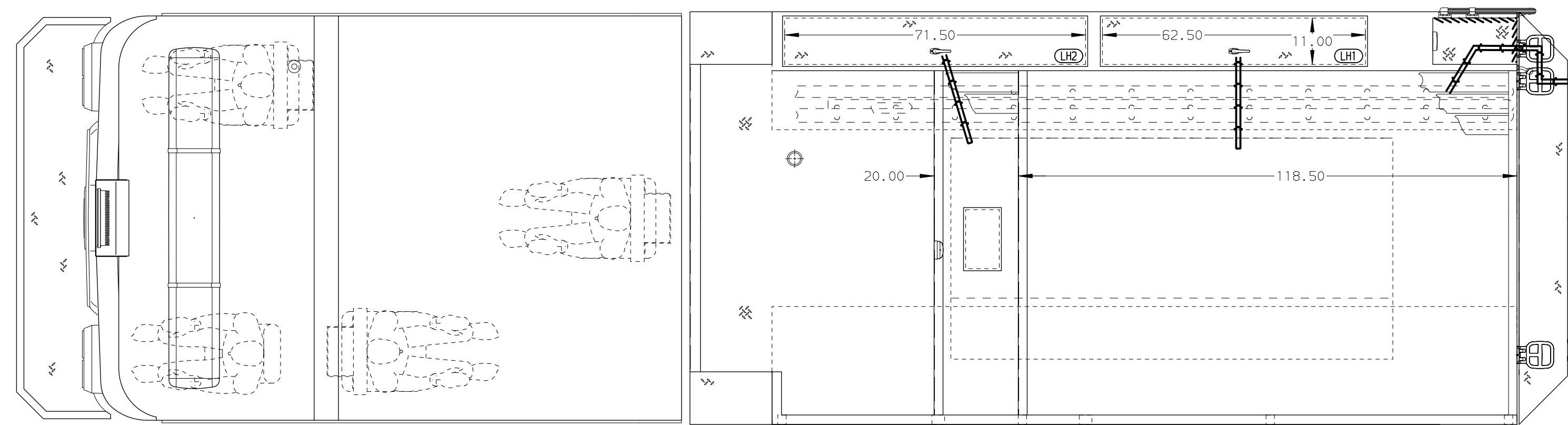
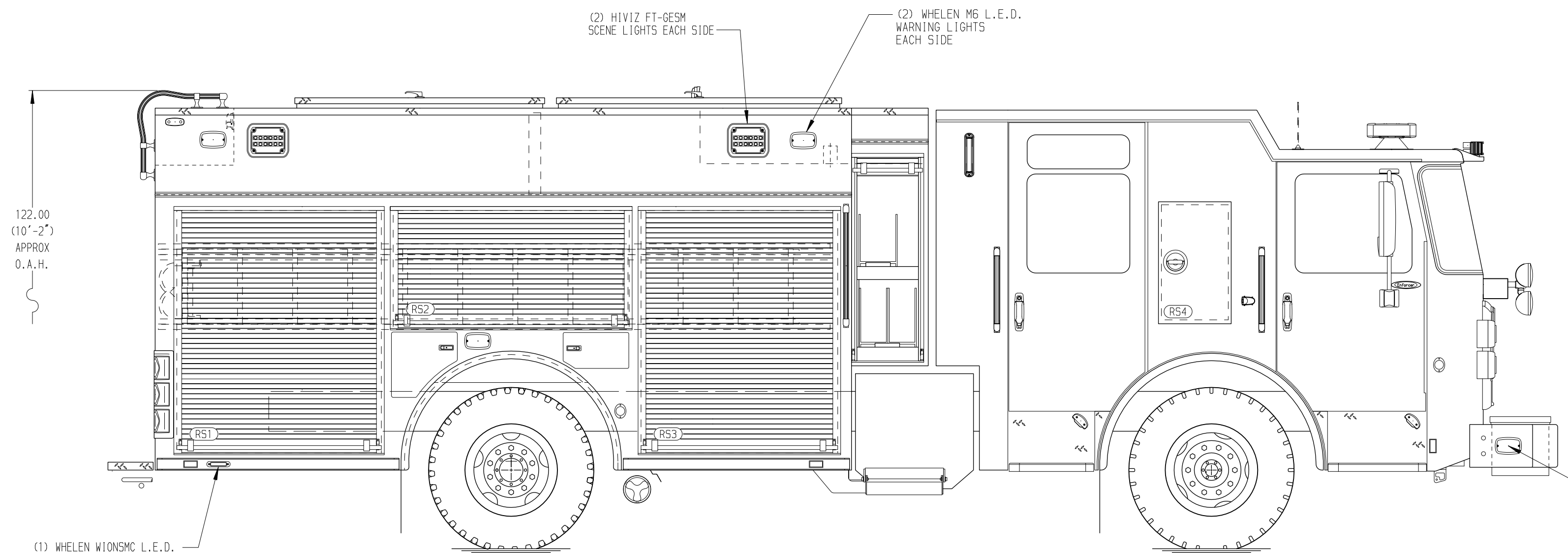
BODY

- WATER TANK
1000 Gallon Poly Water Tank
- COMPT, PUMPER, REAR
40.50" FF RollUp Rear Compt w/Tailboard, PUC
- COMPT, PUMPER, LEFT SIDE
177" RollUp Standard Depth, PUC
- COMPT, PUMPER, RIGHT SIDE
177" RollUp Full Height & Depth Front, Std Depth Rear, PUC

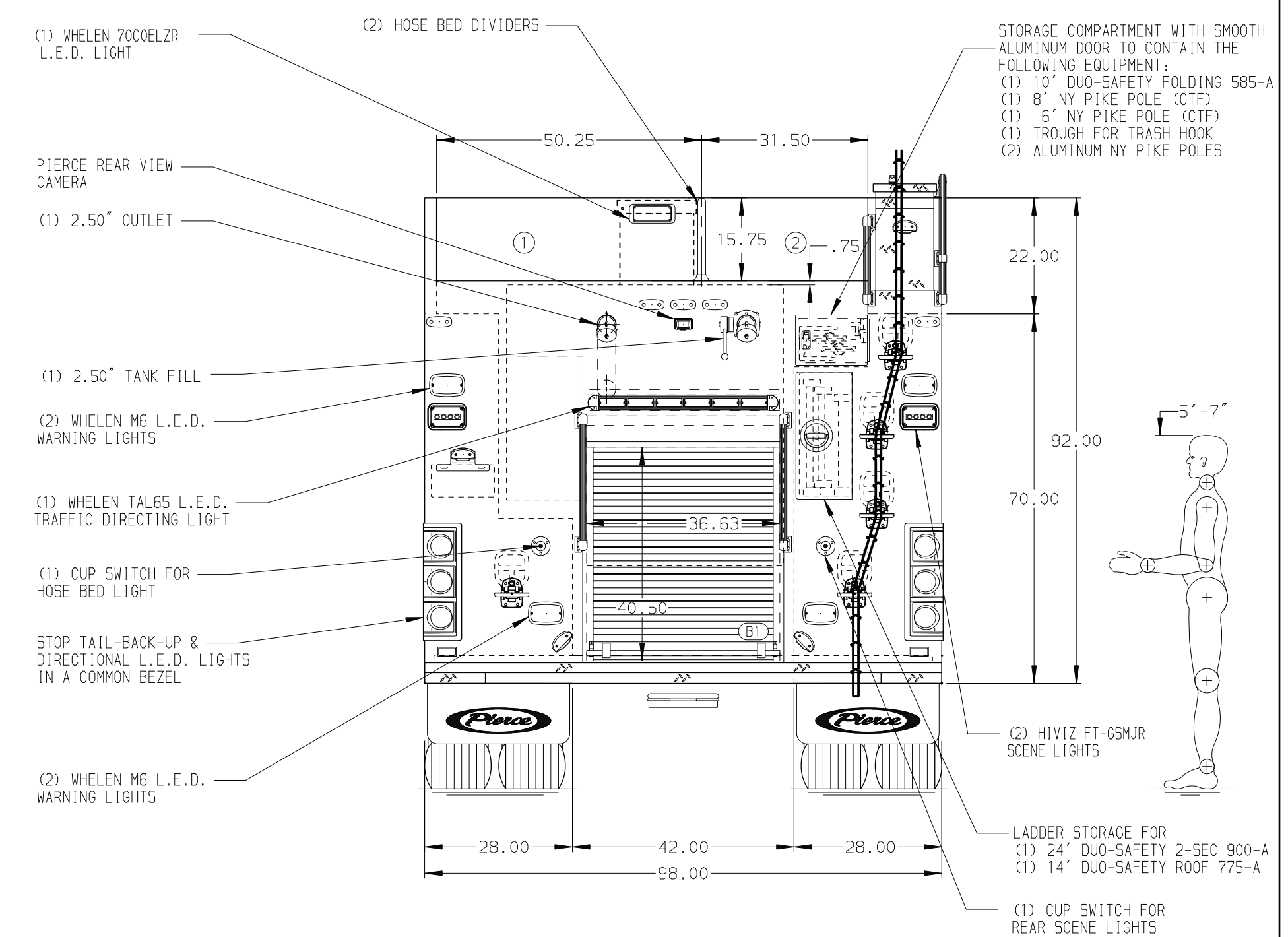
FIRE SUPPRESSION

- PUMPHOUSE
Control Zone, PUC
- PUMP
1500 GPM Pierce PUC
- CROSSLAYS, 1.50"
(2) 1.50", Poly Trays, 200'
- CROSSLAYS, 2.50"
(1) 2.50", Poly Tray, 200' Deadlay

- GENERATOR
Generator Not Required
- Foam System
Foam System Not Required
- Foam Cell
Foam Cell Not Required



HOSEBED CAPACITY	
BED 1	1500' OF 2.50" D.J. POLY HOSE
BED 2	400' OF 1.50" D.J. POLY HOSE



NOTE
DIMENSIONS SHOWN ARE APPROXIMATE AND ARE SUBJECT TO MINOR DEVIATIONS AS MAY OCCUR OR BE NECESSARY IN CONSTRUCTION. MINOR DETAILS NOT SHOWN.

- ONE 1.50 OUTLET WITH 2.00 PIPING AND SWIVEL LOCATED ON TOP BUMPER LEFT SIDE
- SHORELINE RECEPTACLE WITH KUSSMAUL SUPER AUTO-EJECT LOCATED ON DRIVER SIDE OF THE CAB
- AIR INLET WITH DISCONNECT COUPLING IN THE DRIVER SIDE STEPWELL
- BATTERY CHARGER LOCATED IN COMPARTMENT PER SHOP ORDER
- BATTERY CHARGE INDICATOR LOCATED ON THE DRIVER SIDE SEAT RISER
- FIVE ADJUSTABLE SHELVES IN COMPARTMENTS PER SHOP ORDER
- ONE FLOOR MOUNTED SLIDE-OUT TRAY IN COMPARTMENT PER SHOP ORDER
- ONE ADJUSTABLE SLIDE-OUT TRAY LOCATED PER SHOP ORDER
- PAC TRAC INSTALLED ON COMPARTMENT WALL PER SHOP ORDER

CUSTOMER APPROVAL

APPROVED BY: _____
DATE: _____



JOB NO. 37757

SCALE 1:24 DATE

DRAWN BY MMF 16MAY22

CHECKED BY COL 17MAY22

SHEET SIZE D SHEET NO. 1 OF 1

REV	DATE	BY	CH	ENFORCER

TITLE	FOR	DWG NO.
Pierce Pumper Approval Drawing	Cisco Fire Department	37757AD