

PUMPER BODY

Long Aluminum 2nd Gen Pumper

CHASSIS

Enforcer Chassis

CHASSIS AXLE, FRONT, CUSTOM

19,500 Lb TAK-4 Axle

AXLE, REAR

27,000 Lb Dana Axle

ENGINE

510 HP Paccar MX13

TRANSMISSION

Allison 5th Gen, 4000 EVS P

BUMPER

19" Extended Painted Steel

CAB

7010 Enforcer Cab

BODY WATER TANK

750 Gallon Poly Water Tank

COMPT, PUMPER, REAR

37.75" FF RollUp Rear Compt

COMPT, PUMPER, DRIVER SIDE

161" RollUp Full Height Front & Rear FDLR

COMPT, PUMPER PASS. SIDE

161" RollUp Full Height Front & Rear FDLR

FIRE SUPPRESSION PUMPHOUSE

48" Control Zone Side Mount

PUMP

1500 GPM Waterous CSU

CROSSLAYS, 1.50"

(1) 1.50" Spcl. Capacity 150' of 1.75"
(1) 1.50" Spcl. Capacity 250' of 1.75"

CROSSLAYS, 2.50"

2.50" Crosslay Not Required

SPEEDLAYS

Speedlays Not Required

GENERATOR

Generator Not Required

Foam System

Husky 12 Dual Agent Foam System

Foam Cell

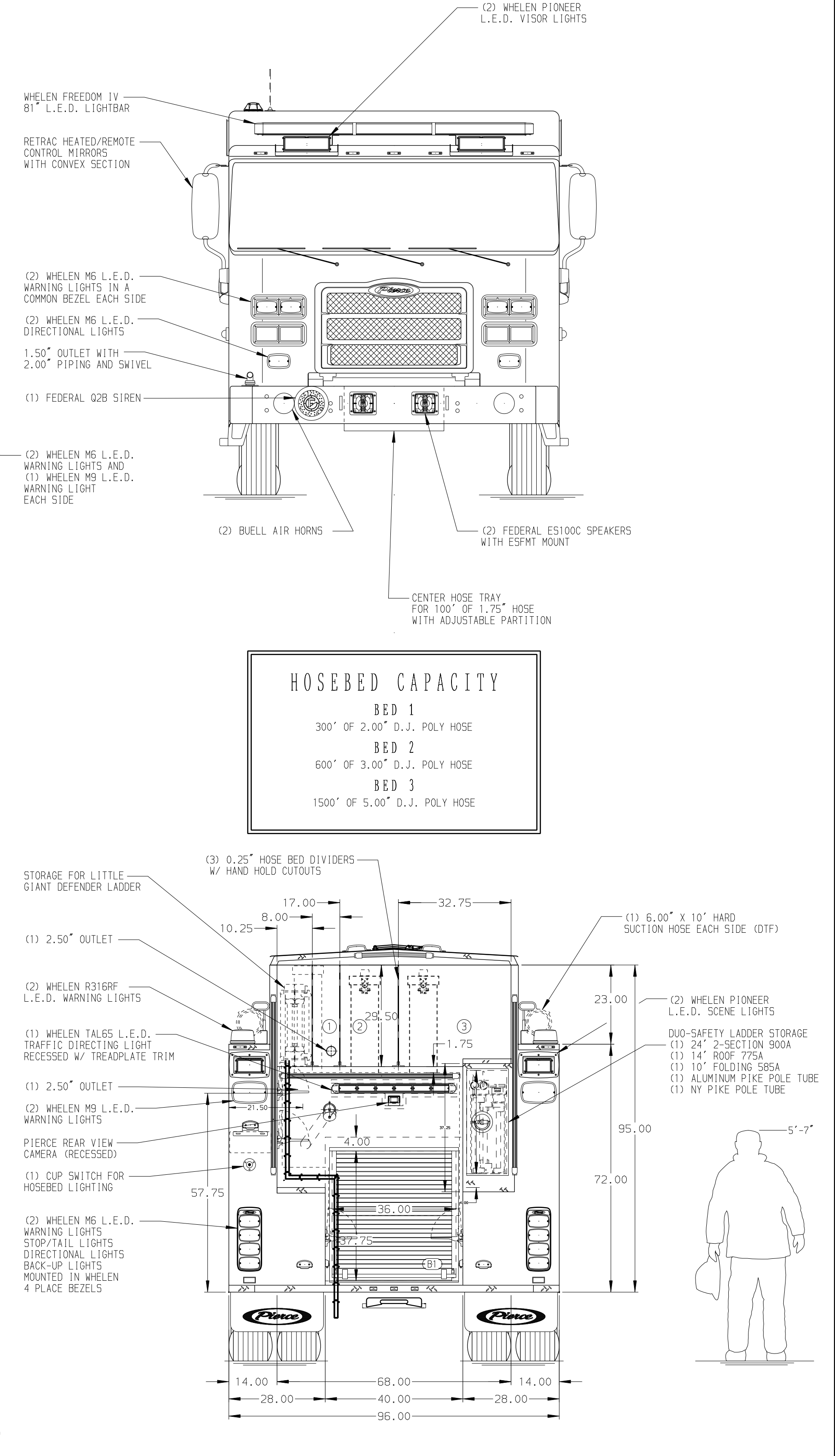
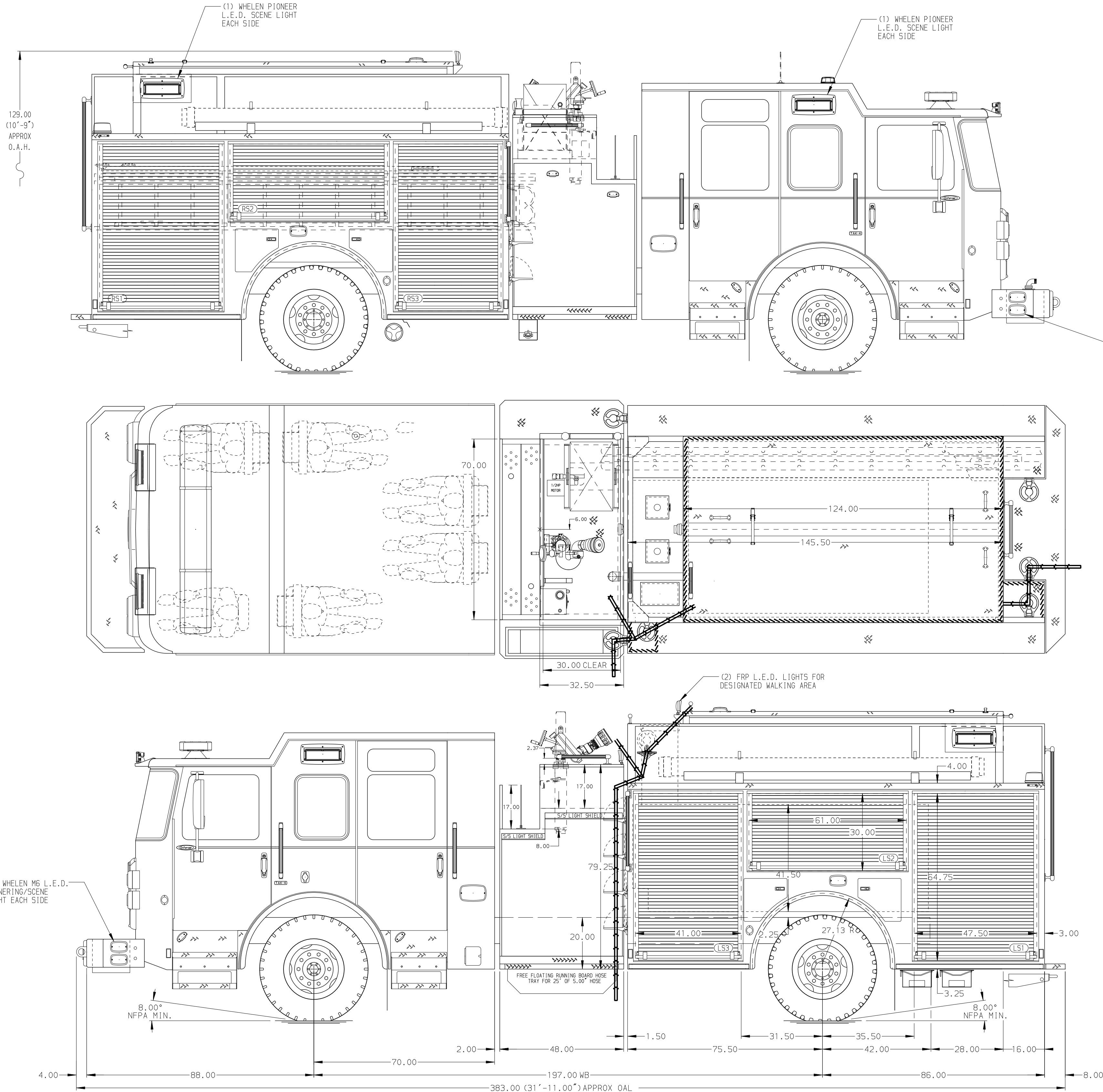
25 Gallon Foam Cell, Not Reduced Water
25 Gallon Foam Cell, Not Reduced Water

Side Roll and Frontal Impact Protection

NOTE

DIMENSIONS SHOWN ARE APPROXIMATE AND ARE SUBJECT TO MINOR DEVIATIONS AS MAY OCCUR OR BE NECESSARY IN CONSTRUCTION. MINOR DETAILS NOT SHOWN.

- SHORELINE RECEPTACLE WITH KUSSMAUL SUPER AUTO-EJECT LOCATED ON DRIVER SIDE OF THE CAB
- AIR INLET WITH DISCONNECT COUPLING ON DS PUMP PANEL
- BATTERY CHARGER LOCATED BEHIND DRIVERS SEAT
- BATTERY CHARGE INDICATOR LOCATED ON THE DRIVER SIDE SEAT RISER
- FOUR ADJUSTABLE SHELVES LOCATED PER SHOP ORDER
- TWO SWING-OUT TOOLBOARDS LOCATED PER SHOP ORDER
- FOUR ALUMINUM TOOLBOARDS LOCATED PER SHOP ORDER
- HANNAY BOOSTER REEL MODEL EF24-28-28 LOCATED IN CARGO AREA WITH CAPACITY FOR 200' OF 1.00" BOOSTER HOSE



CUSTOMER APPROVAL

APPROVED BY: _____
DATE: _____



JOB NO.	37763
SCALE	1:24
DATE	
DRAWN BY	MMF
CHECKED BY	COL
SHEET SIZE	D
SHEET NO.	1 OF 1

TITLE	Pierce Pumper Approval Drawing
MAKE	PIERCE
MODEL	ENFORCER
DWG NO.	37763AD

FOR	Edinburg Fire Department
DWG NO.	37763AD