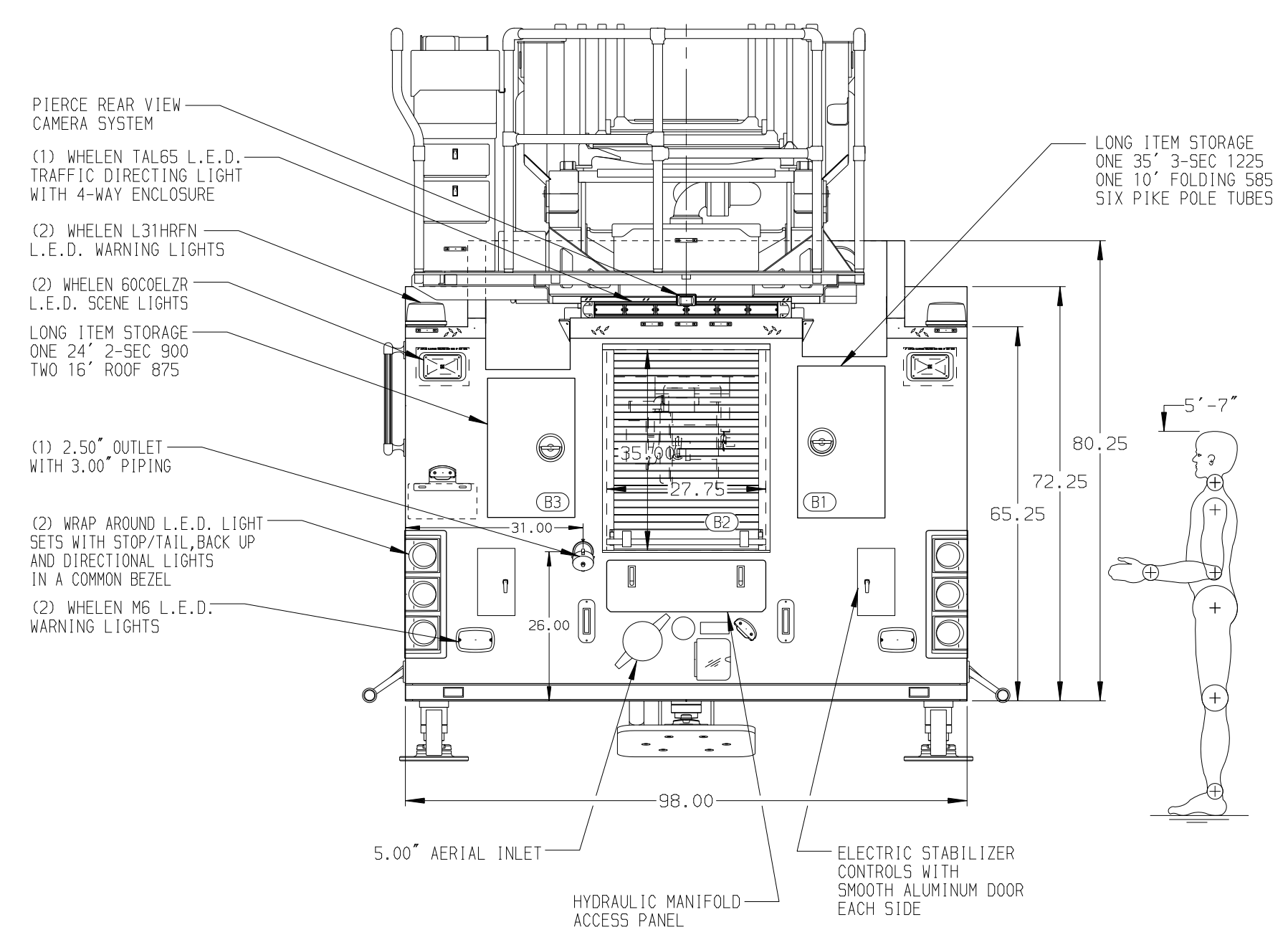
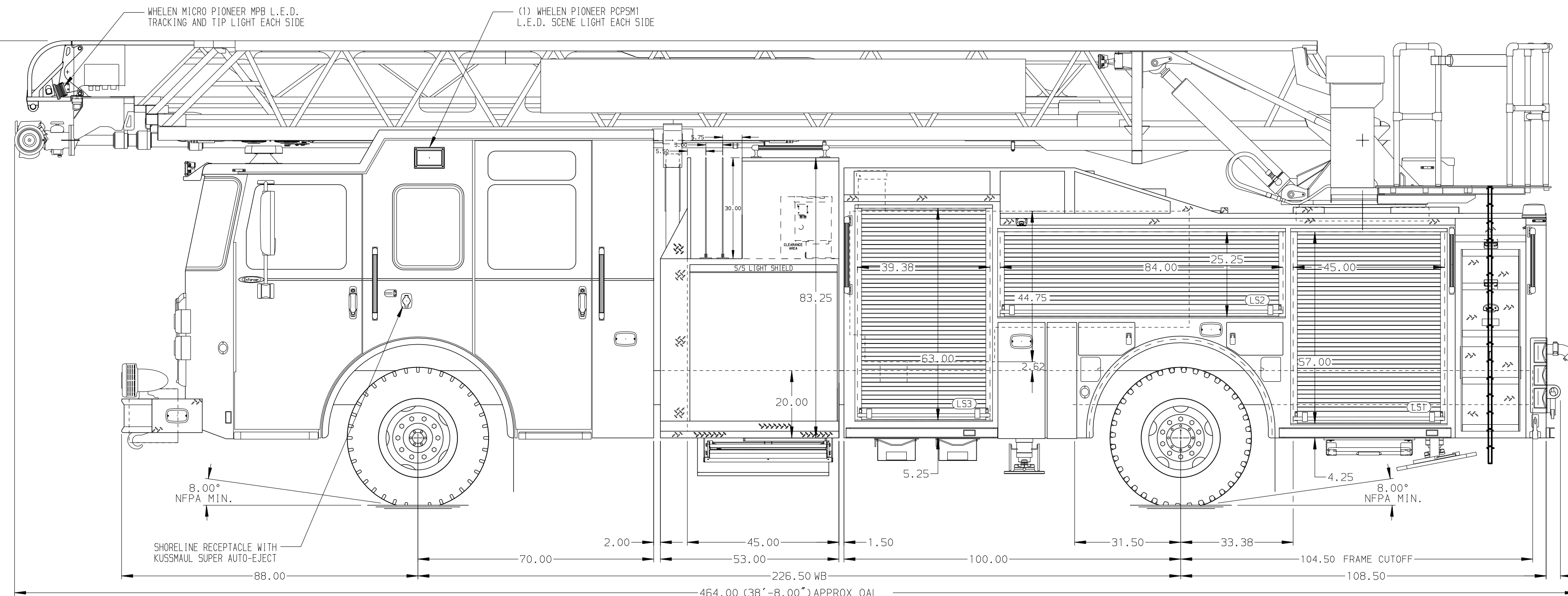


BODY	WATER TANK
107' ASL Aluminum Body	480 Gallon Poly Water Tank
COMPT, LEFT SIDE FRONT	Foam System
Full Height RollUp Forward	Husky 3 Single Agent Foam System
COMPT, LEFT SIDE REAR	Foam Cell
Full Height RollUp Rearward	20 Gallon Foam Cell, Reduced Water
COMPT, RIGHT SIDE FRONT	
Full Height RollUp Forward	
COMPT, RIGHT SIDE REAR	
Full Height RollUp Rearward-Large Rear	



CHASSIS	CAB	AXLE, FRONT, CUSTOM	TRANSMISSION	PUMPHOUSE	CROSSLAYS, 1.50"	SPEEDLAYS	SAFETY	CUSTOMER APPROVAL	Pierce MANUFACTURING INC.		JOB NO.		
Enforcer Chassis	7010 Notched Enforcer Cab	20,000 Lb Dana Axle	Allison 5th Gen, 3000 EV5 P	45" Control Zone Side Mount	(2) 1.50" Std Cap-Single Stack	Speedlays Not Required	Frontal Impact Protection	APPROVED BY: _____			37764		
ENGINE	BUMPER	AXLE, REAR		PUMP	CROSSLAYS, 2.50"	GENERATOR		DATE: _____			SCALE	DATE	
450 HP Cummins L9 Engine	19" Extended Stainless Steel	33,500 Lb Meritor Axle		2000 GPM Waterous CSU	(1) 2.50" Std Cap-Single Stack	Harrison 6kw Stinger MSV Hyd			TITLE	107' ASCENDANT AERIAL LADDER AND BODY ASSEMBLY	DRAWN BY		
NOTE DIMENSIONS SHOWN ARE APPROXIMATE AND ARE SUBJECT TO MINOR DEVIATIONS AS MAY OCCUR OR BE NECESSARY IN CONSTRUCTION. MINOR DETAILS NOT SHOWN.									MAKE	PLAINVIEW FIRE DEPARTMENT	CHECKED BY		
									MODEL	PLAINVIEW, MN	SHEET SIZE	SHEET NO.	
									ENFORCER	DWG NO.	37764AD	D	1 OF 1

(MAX. OAL = 468.00" (39'-0"))