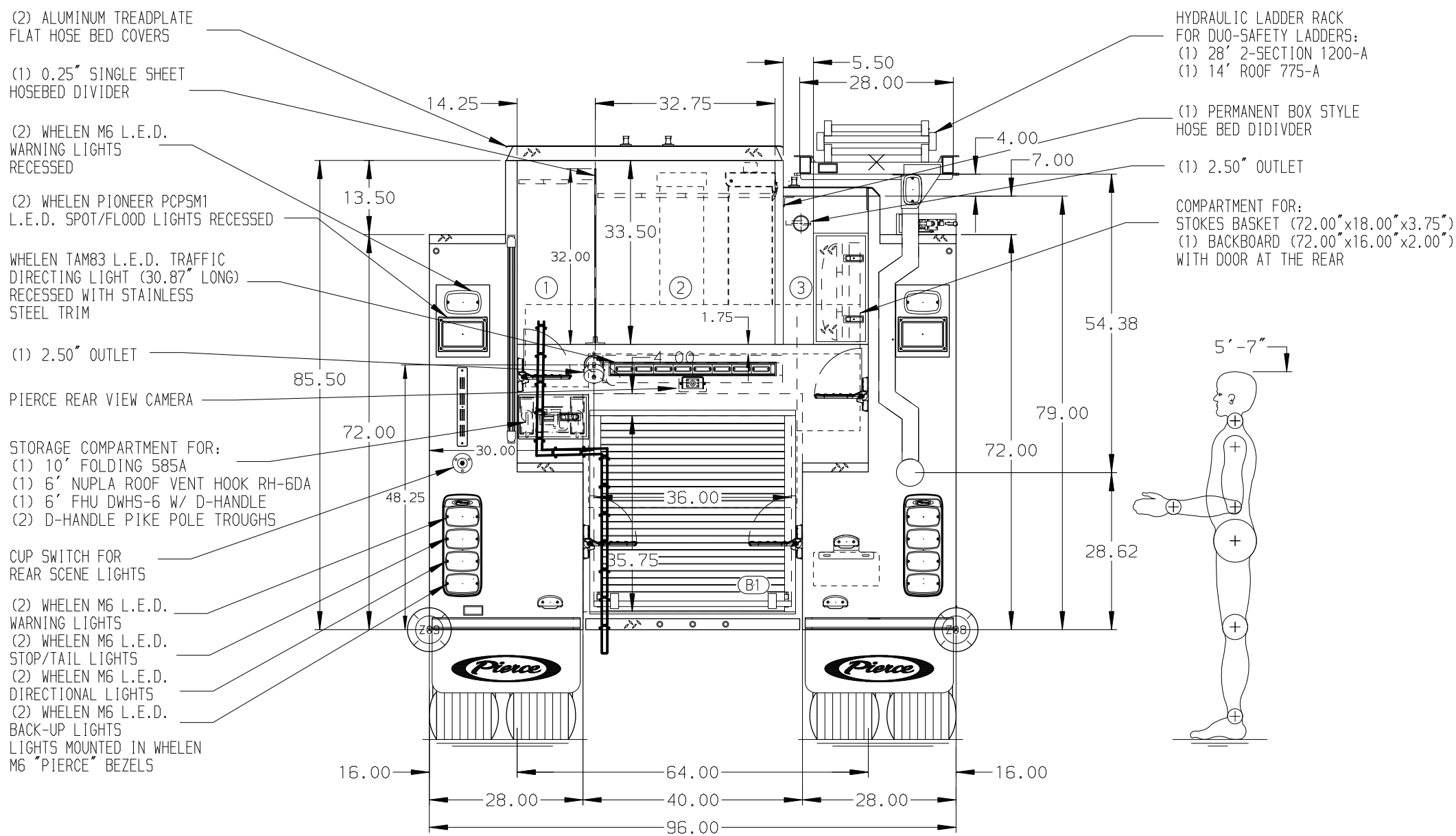


- HOSEBED CAPACITIES
- ① - 800' OF 2.50" D.J. POLY HOSE
  - ② - 1000' OF 5.00" D.J. POLY HOSE
  - ③ - 200' OF 2.50" D.J. POLY HOSE



## ALUMINUM BODY

## SIDE ROLL AND FRONTAL IMPACT PROTECTION

**NOTE**  
DIMENSIONS SHOWN ARE APPROXIMATE AND ARE SUBJECT TO MINOR DEVIATIONS AS MAY OCCUR OR BE NECESSARY IN CONSTRUCTION.  
MINOR DETAILS NOT SHOWN.

1. KUSSMAUL BATTERY CHARGER LOCATED PER SHOP ORDER
2. BATTERY CHARGER LOCATED PER SHOP ORDER
3. BATTERY CHARGER INDICATOR LOCATED ON DRIVER'S SEAT RISER
4. DRIP PAN GUARD FOR ROLL-UP DOOR LOCATED PER SHOP ORDER
5. KEYS LOCATED FOR LATCHES LOCATED PER SHOP ORDER
6. PULL STRAPS ON DOORS LOCATED PER SHOP ORDER
7. REVERSED HINGED DOOR LOCATED PER SHOP ORDER
8. BRUSHED STAINLESS STEEL SCUFFPLATE INSIDE EACH BODY COMPARTMENT DOOR
9. TEN FULL WIDTH/DEPTH ADJUSTABLE SHELVES LOCATED PER SHOP ORDER
10. ONE FIXED FULL WIDTH/DEPTH SHELF LOCATED PER SHOP ORDER

11. ONE ADJUSTABLE SLIDE-OUT TRAY LOCATED PER SHOP ORDER
12. ONE ADJUSTABLE TILTING SLIDE-OUT TRAY LOCATED PER SHOP ORDER
13. ONE FLOOR MOUNTED SLIDE-OUT TRAY WITH SIDE SLIDES LOCATED PER SHOP ORDER
14. ONE FLOOR MOUNTED SLIDE-OUT TRAY LOCATED PER SHOP ORDER
15. SWING-OUT TOOL BOARD WITH PEGBOARD PATTERN LOCATED PER SHOP ORDER
16. PARTITION BETWEEN COMPARTMENTS L51/B1 AND R51/B1
17. TWO VERTICAL PARTITIONS LOCATED PER SHOP ORDER
18. TWO ALUMINUM PEGBOARD WITH TRACKS ON THE SIDE WALLS LOCATED PER SHOP ORDER
19. ALUMINUM PEGBOARD ON BACK WALL LOCATED PER SHOP ORDER
20. FOUR 120V DUPLEX RECEPTACLES LOCATED PER SHOP ORDER

21. ONE TOOL DRAWER CABINET LOCATED PER SHOP ORDER
22. SHORELINE RECEPTACLE WITH KUSSMAUL SUPER AUTO-EJECT LOCATED PER SHOP ORDER
23. AIR INLET WITH AIR-EJECT AND WEATHERPROOF COVER LOCATED PER SHOP ORDER
24. AIR OUTLET WITH SHUT OFF VALVE RECESSED LOCATED PER SHOP ORDER

### CUSTOMER APPROVAL

APPROVED BY: \_\_\_\_\_  
DATE: \_\_\_\_\_

REV	DATE	BY	CH	ENFORCER



TITLE 1500-D-520P, 500G WATER W/ 20G FOAM, 145" FDLER BODY  
FOR RS LADDER RACK, (1) DEADLAY, (2) SPEEDLAYS, DELUGE  
CITY OF NAPA  
NAPA, CALIFORNIA  
DWG NO. 37768AD

JOB NO.	37768
SCALE	1:24
DRAWN BY	JJB
CHECKED BY	NPE
SHEET SIZE	D
SHEET NO.	1 OF 1