

RIGHT SIDE COMPARTMENTS CONTAIN THE FOLLOWING:

COMPARTMENT R51 CONTAINS:

- (1) VERTICAL PEGBOARD DIVIDER
- (1) HORIZONTAL FLOOR EXTENSION
- (1) STD DEPTH FLOOR MTD TRAY W/SIDE SLIDES
- (1) 3/4 DEPTH SLIDEMASTER TRAY W/TOOLBOARD
- TOOLBOARD MOUNTED TO REAR WALL, FORWARD FACING SIDE WALL AND REAR FACING SIDE OF VERTICAL DIVIDER

COMPARTMENT R52 CONTAINS:

- (1) VERTICAL REAR WALL DIVIDER
- PITCHED COMPARTMENT FLOOR
- CARGO RETENTION NETTING
- (1) PLYWOOD STORAGE TROUGH
- (1) REINFORCED HORIZONTAL DIVIDER

COMPARTMENT R53 CONTAINS:

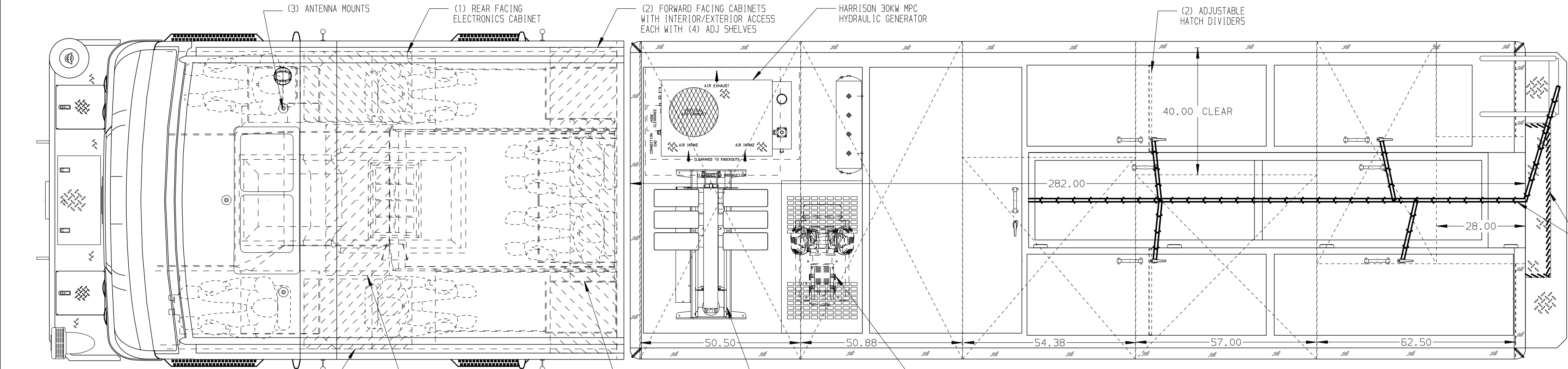
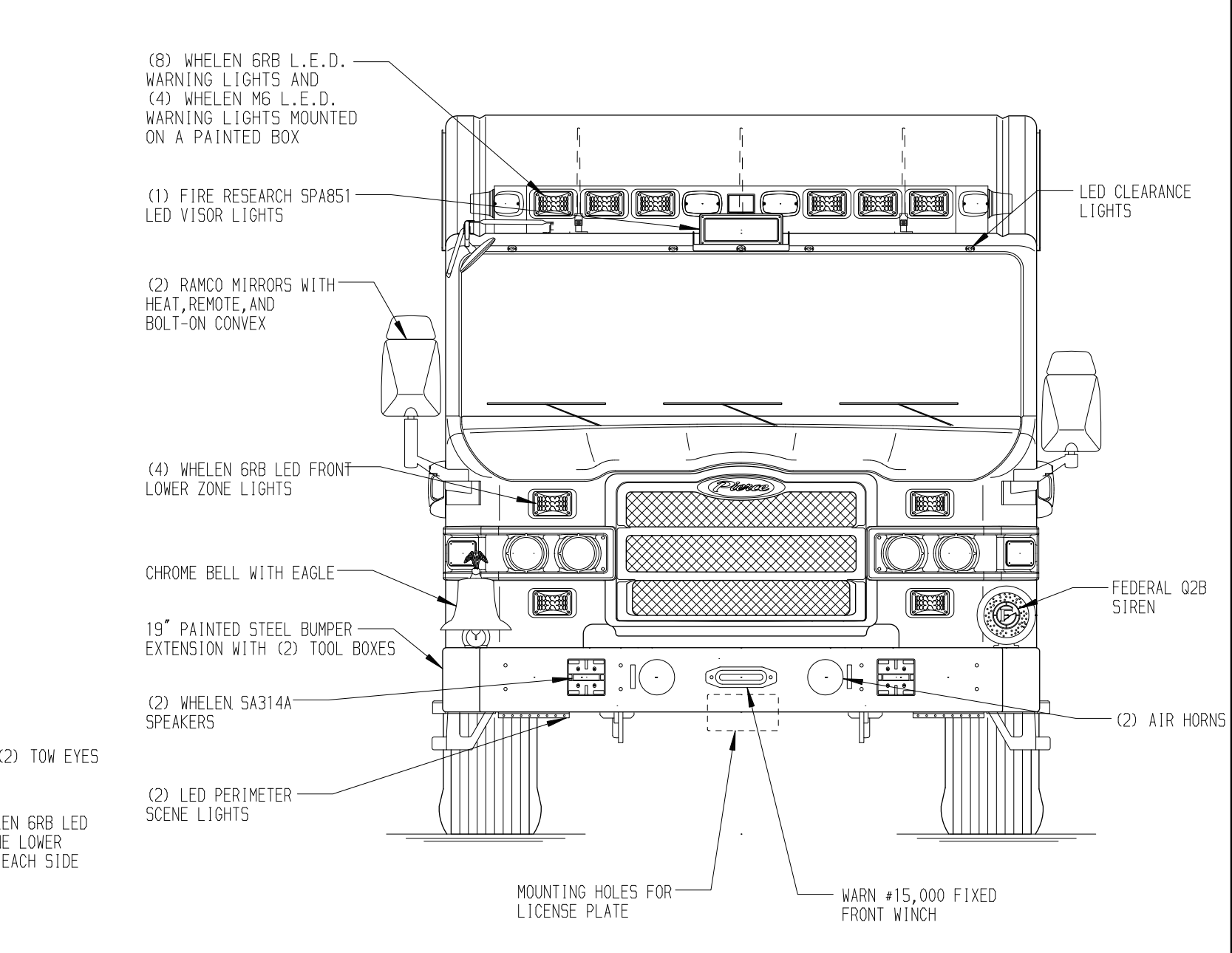
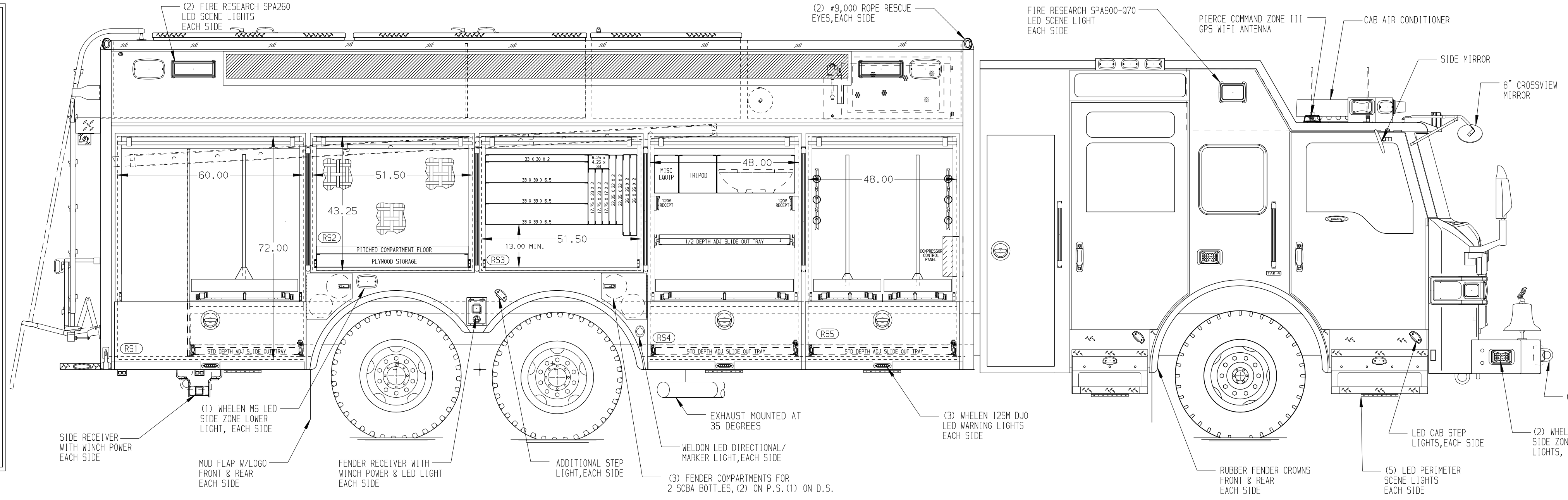
- (1) RACK FOR AIR BAGS

COMPARTMENT R54 CONTAINS:

- (1) HORIZONTAL FLOOR EXTENSION
- (1) 1/2 DEPTH SLIDEMASTER FLOOR MTD TRAY
- (1) STD DEPTH FLOOR MTD TRAY W/SIDE SLIDES
- (1) 1/2 DEPTH ADJ SLIDE OUT TRAY
- (1) STOKES BASKET TROUGH
- (1) TRIPOD STORAGE TROUGH
- (1) EQUIPMENT STORAGE TROUGH
- (2) 15/20A, 120V DUPLEX RECEPTACLES

COMPARTMENT R55 CONTAINS:

- (1) HORIZONTAL FLOOR EXTENSION
- (2) 1/2 DEPTH SLIDE MASTER TRAYS W/TOOLBOARDS
- (1) STD DEPTH FLOOR MTD TRAY W/SIDE SLIDES
- (6) PIKE POLE TUBES MTD MOUNTED AT SLANT
- (1) ATLAS COPCO COMPRESSOR CONTROLLER



LEFT SIDE COMPARTMENTS CONTAIN THE FOLLOWING:

COMPARTMENT L51 CONTAINS:

- (1) 4-DRAWER CABINET
- (1) STD DEPTH ADJ SLIDE OUT TRAY
- (1) STD DEPTH FLOOR MTD TRAY W/SIDE SLIDES
- (2) STD DEPTH ADJ SHELVES
- (1) VERTICAL REAR WALL DIVIDER

COMPARTMENT L52 CONTAINS:

- (2) 1/2 DEPTH FLOOR MTD SLIDEMASTER TRAYS
- (1) PLYWOOD STORAGE TROUGH
- (1) REINFORCED HORIZONTAL DIVIDER

COMPARTMENT L53 CONTAINS:

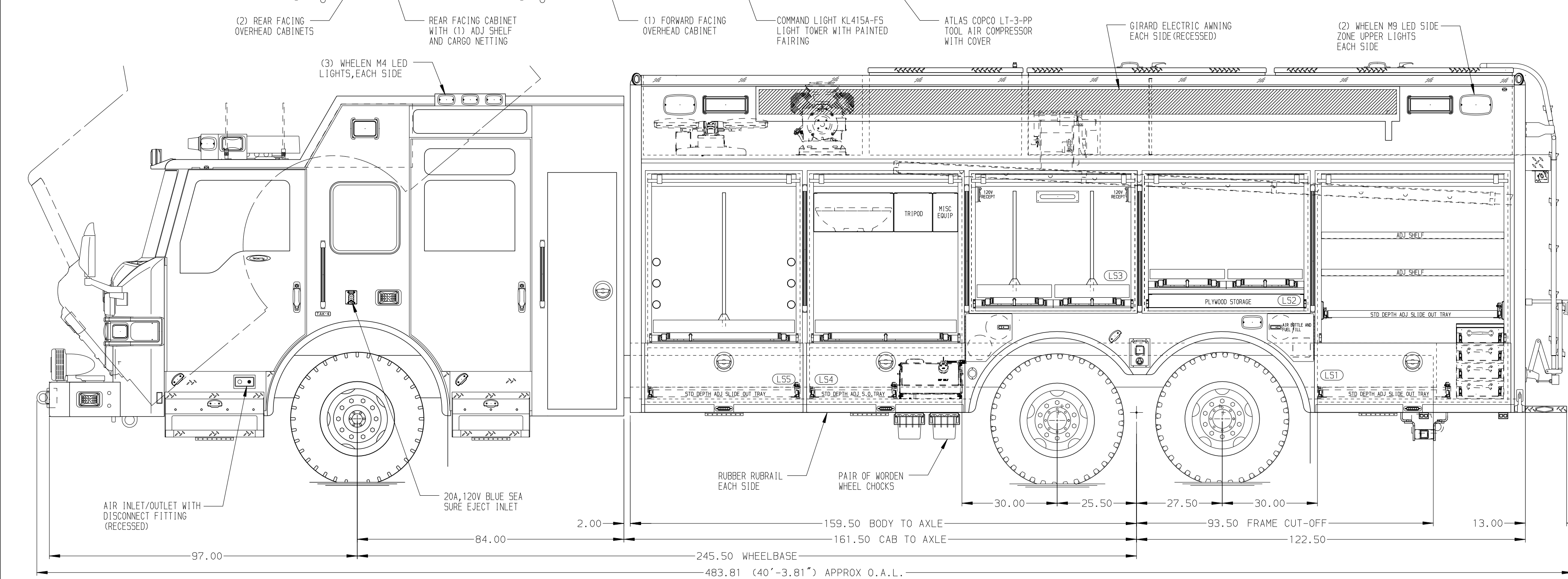
- (2) SPECIAL DEPTH SLIDEMASTER TRAYS W/TOOLBOARDS
- (2) 15/20A, 120V DUPLEX RECEPTACLES
- (1) 5 GALLON DEF FLUID TANK
- (1) ELECTRIC CORD REEL WITH 200' OF 10/3 YELLOW CORD

COMPARTMENT L54 CONTAINS:

- (1) HORIZONTAL FLOOR EXTENSION
- (1) 1/2 DEPTH SLIDEMASTER FLOOR MTD TRAY
- (1) STD DEPTH FLOOR MTD TRAY W/SIDE SLIDES
- (1) STOKES BASKET TROUGH
- (1) TRIPOD STORAGE TROUGH
- (1) EQUIPMENT STORAGE TROUGH

COMPARTMENT L55 CONTAINS:

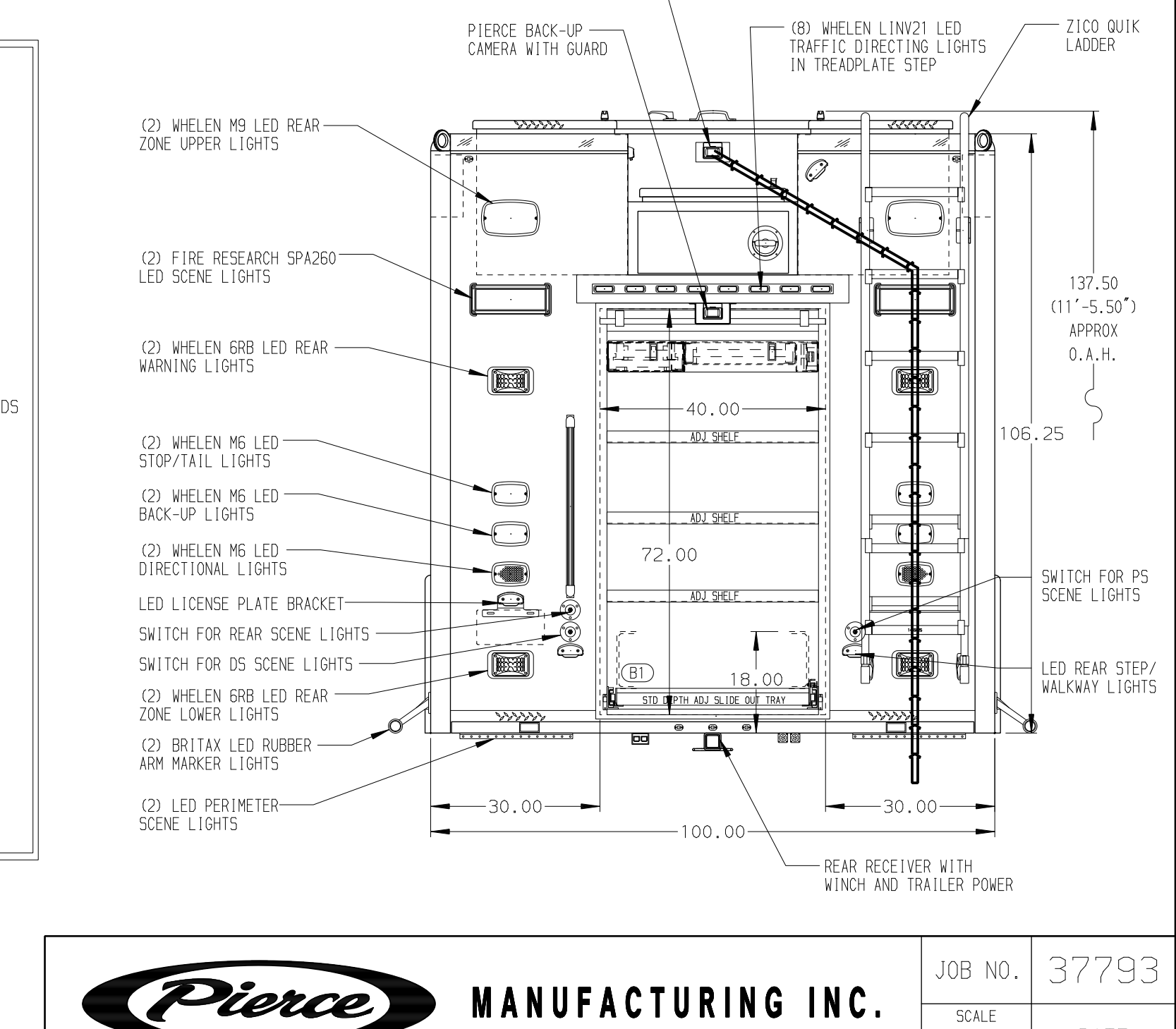
- (1) HORIZONTAL FLOOR EXTENSION
- (1) 1/2 DEPTH ADJ SLIDEMASTER TRAY W/TOOLBOARD
- (1) STD DEPTH FLOOR MTD TRAY W/SIDE SLIDES
- (1) BLUE SEA P12 BATTERY CHARGER
- (1) COMMAND LIGHT CONTROLLER



REAR COMPARTMENT CONTAINS THE FOLLOWING:

COMPARTMENT B1 CONTAINS:

- (3) STD DEPTH ADJ SHELVES
- (1) STD DEPTH FLOOR MTD TRAY W/SIDE SLIDES
- (1) 16\"/>



NOTE

DIMENSIONS SHOWN ARE APPROXIMATE AND ARE SUBJECT TO MINOR DEVIATIONS AS MAY OCCUR OR BE NECESSARY IN CONSTRUCTION. MINOR DETAILS NOT SHOWN.

NOTES:

- WARN #10,000 PORTABLE WINCH
- (6) STREAM LIGHT SURVIVOR C4 LED HAND LIGHTS MOUNTED IN CAB AND CREW CAB
- FLOOR IN CAB AND CREW CAB TO BE PADDED RUBBER
- BRUSHED S/S ON RADIUS BODY ROOF EDGES
- (4) #9,000 RECEIVER STYLE ROPE ANCHORS
- LED STRIP LIGHTS IN ALL BODY AND HATCH COMPARTMENTS
- 15/20A, 120V DUPLEX RECEPTACLE ABOVE EACH FORWARD FACING CABINET AND (1) INSIDE REAR FACING CABINET ON ENGINE TUNNEL
- BATTERY CHARGE INDICATOR LOCATED ON DRIVER'S SEAT WITH BRACKET
- PULL STRAPS ON ALL BODY ROLL-UP DOORS
- PIERCE LED LIGHT STRIPS IN ALL BODY AND HATCH COMPARTMENTS

SIDE ROLL AND FRONTAL IMPACT PROTECTION

CLEAR DOOR WIDTH KEY	
AMDR ROLL UP DOORS:	-2 1/4"
CORITITE ROLL UP DOORS:	-2 1/2"
PIERCE DOUBLE LAP DOORS:	-4 1/4"
PIERCE LIFT-UP LAP DOORS:	-1 1/2"

(EX: 60" F-F - 2 1/4" = 57 3/4" CLEAR)
(F-F) = FRAME TO FRAME

		JOB NO.	37793
		SCALE	DATE
TITLE	HEAVY DUTY RESCUE NON-WALK-IN	DRAWN BY	DHE 11AUG22
FOR	SAN ANTONIO FIRE DEPARTMENT SAN ANTONIO, TX	CHECKED BY	AZU 22AUG22
DWG NO.	37793AD	SHEET SIZE	SHEET NO.
			D 1 of 1