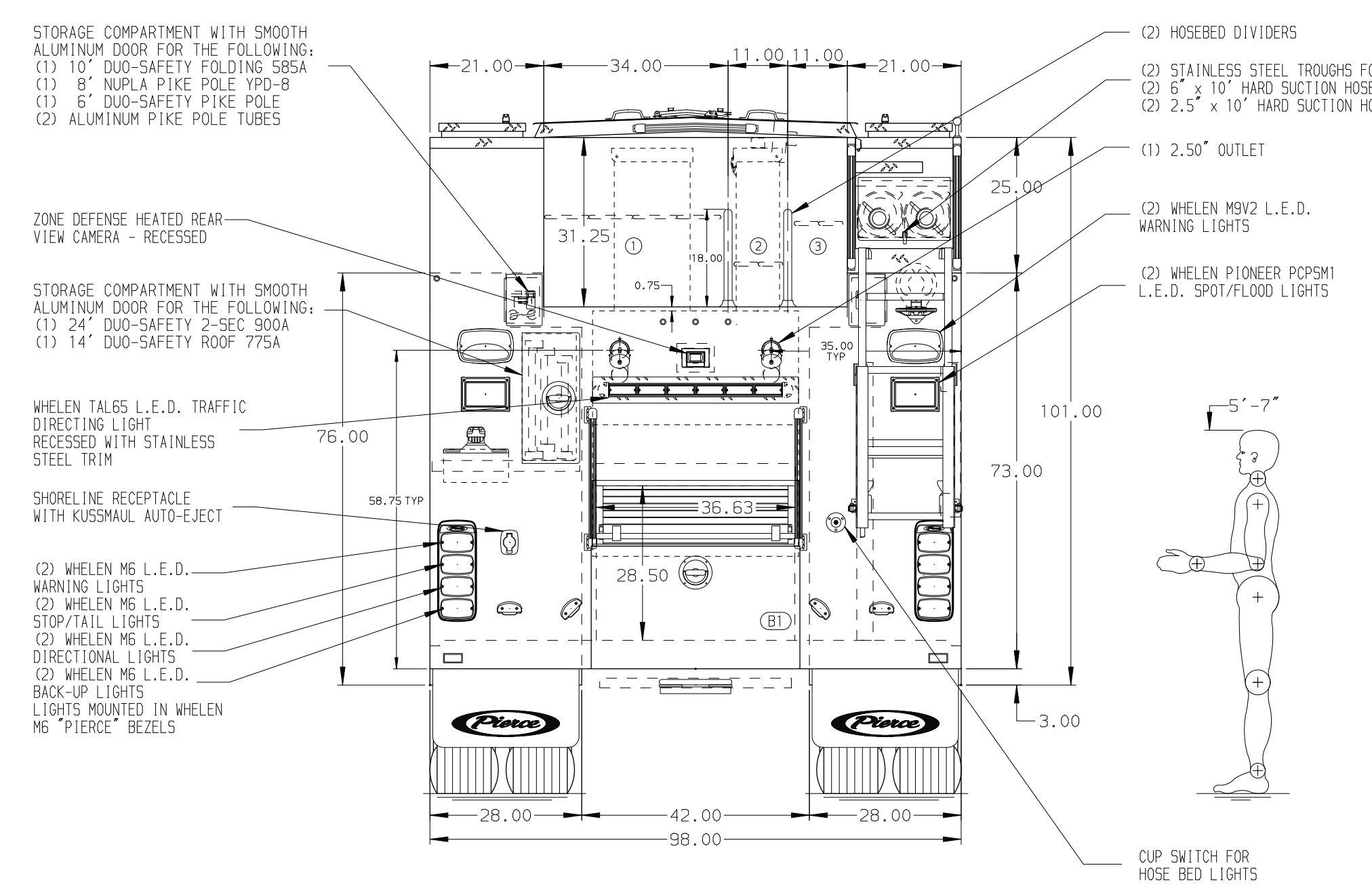
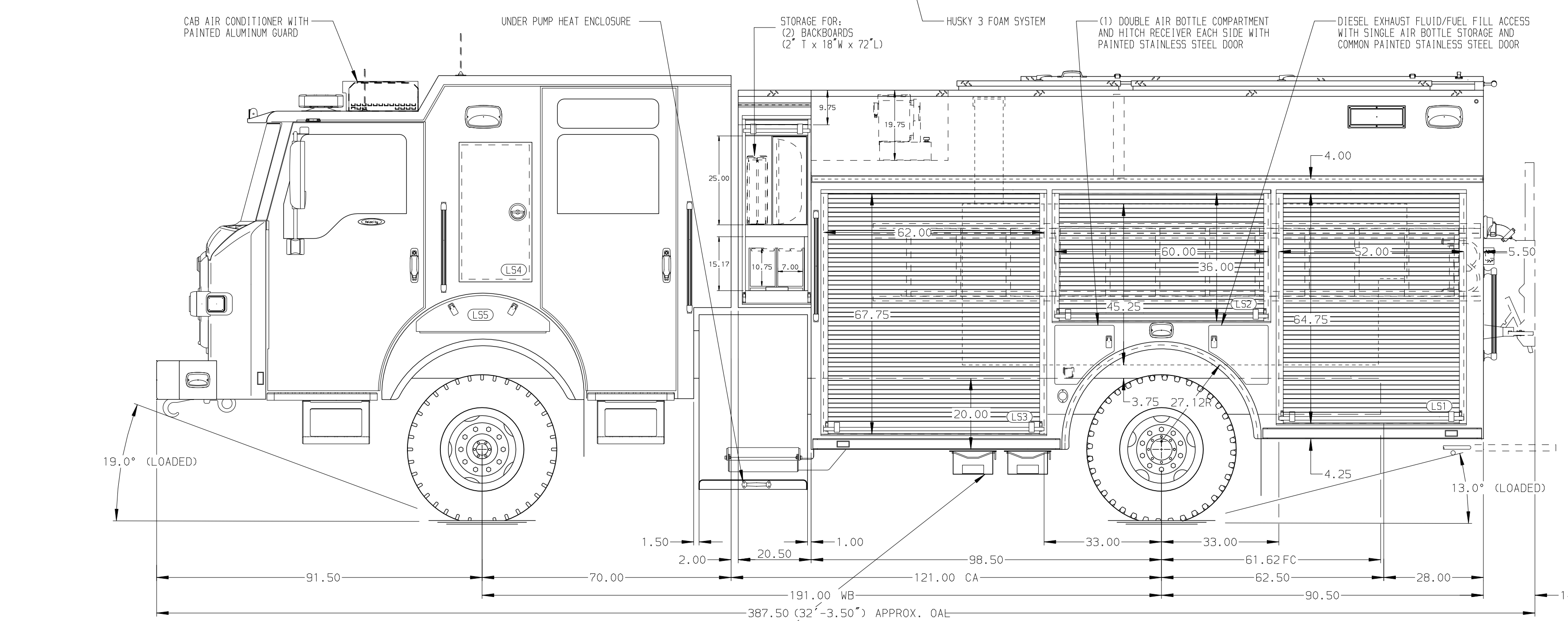


**HOSEBED CAPACITIES**

- 1000' OF 5.00" SUPPLYLINE HOSE
- 200' OF 4.50" D.J. POLY HOSE
- 400' OF 2.50" D.J. POLY HOSE



ALUMINUM BODY      MAXIMUM O.A.L. 372.00"      (2) ZIAMATIC SAC-44-E FOLDING WHEEL CHOCKS      SIDE ROLL AND FRONTAL IMPACT PROTECTION

**NOTE**  
 DIMENSIONS SHOWN ARE APPROXIMATE AND ARE SUBJECT TO MINOR DEVIATIONS AS MAY OCCUR OR BE NECESSARY IN CONSTRUCTION. MINOR DETAILS NOT SHOWN.

- BATTERY CHARGER LOCATED BEHIND DRIVER'S SEAT
- BATTERY CHARGE INDICATOR LOCATED PER SHOP ORDER
- AIR INLET/OUTLET WITH DISCONNECT FITTING LOCATED PER SHOP ORDER
- DUAL L.E.D. LIGHT STRIPS LOCATED IN HOSE BED

**CUSTOMER APPROVAL**

APPROVED BY: \_\_\_\_\_  
 DATE: \_\_\_\_\_

REV	DATE	BY	CH	VELOCITY FR

**Pierce MANUFACTURING INC.**

CHASSIS DATA  
 MAKE PIERCE  
 MODEL

TITLE 1500-750P, 730G WATER, 20G FOAM, 189" PUC RESCUE 4X4 LADDERS THRU BODY, (3) XLYS, DELUGE, HUSKY 3 FOAM  
 FOR CITY OF SOUTH LAKE TAHOE SOUTH LAKE TAHOE, CALIFORNIA  
 DWG NO. 37815AD-SH1

JOB NO.	37815
SCALE	1:24
DATE	
DRAWN BY	JJB
CHECKED BY	NPE
SHEET SIZE	SHEET NO.
D	1 OF 2