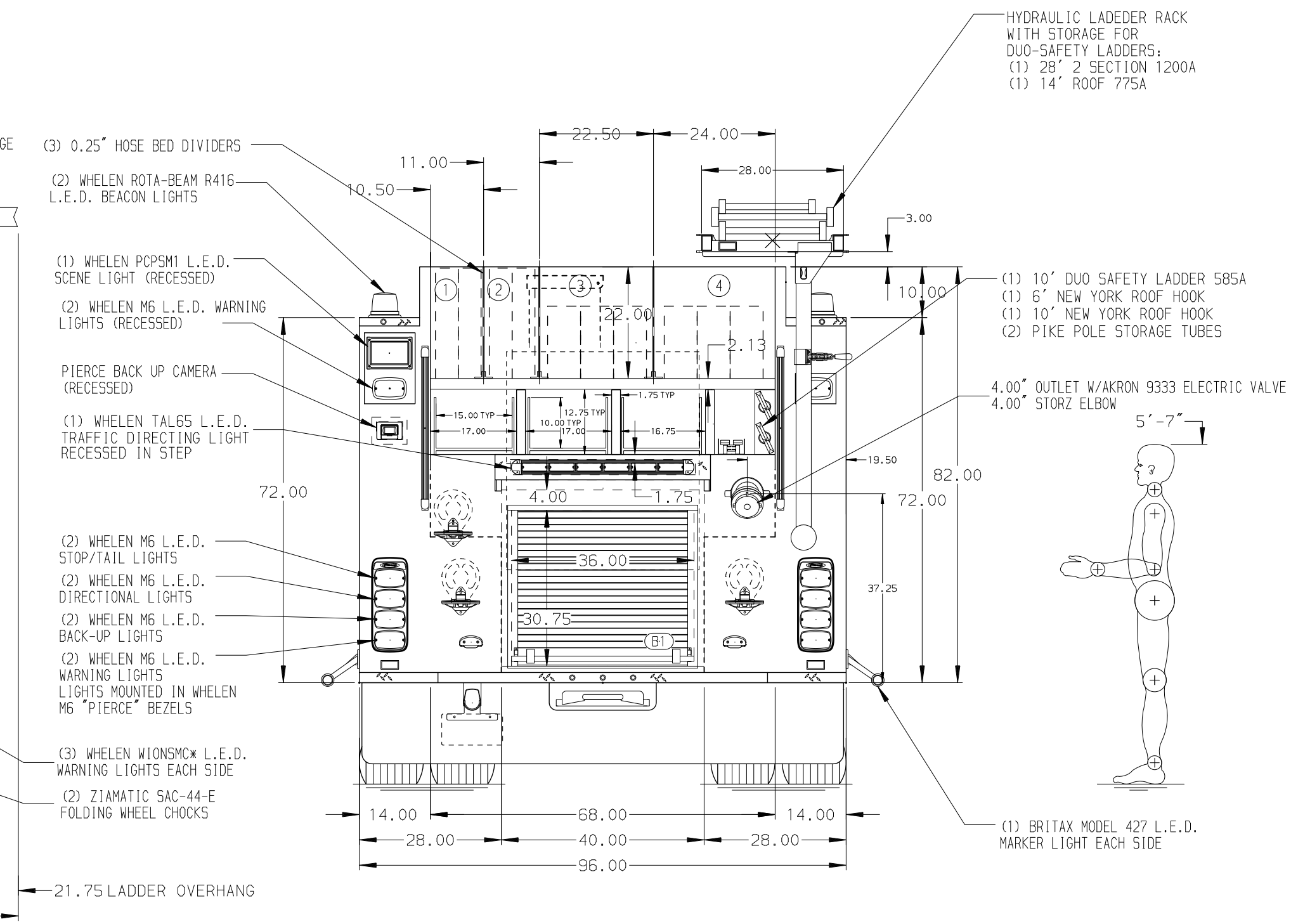


- HOSEBED CAPACITIES**
- ① 400' OF 2.5\"/>



ALUMINUM BODY

NOTE
 DIMENSIONS SHOWN ARE APPROXIMATE AND ARE SUBJECT TO MINOR DEVIATIONS AS MAY OCCUR OR BE NECESSARY IN CONSTRUCTION. MINOR DETAILS NOT SHOWN.

- 1. BATTERY CHARGER LOCATED PER ORDER
- 2. SEVEN 5/8\"/>

SHORELINE STRIGHT BLADE NEMA 5-20 RECEPTACLE

(1) FREE FLOATING RUNNING BOARD HOSE TRAY WITH TO HOLD 20\"/>

REV	DATE	BY	CH	ENFORCER
30JAN24	KLE	CLM		CHASSIS DATA
20NOV23	KLE	AST		MAKE
16NOV23	KLE	CLM		PIERCE
11SEP23	KLE	CLM		MODEL
14JUL23	KLE	CLM		

		JOB NO.	37841
		SCALE	DATE
TITLE 1500-D-500 GAL, 152\"/>	DRAWN BY	SD5	02FEB23
	CHECKED BY	EGO	10FEB23
	SHEET SIZE	D	SHEET NO.
DWG NO.	37841AD		