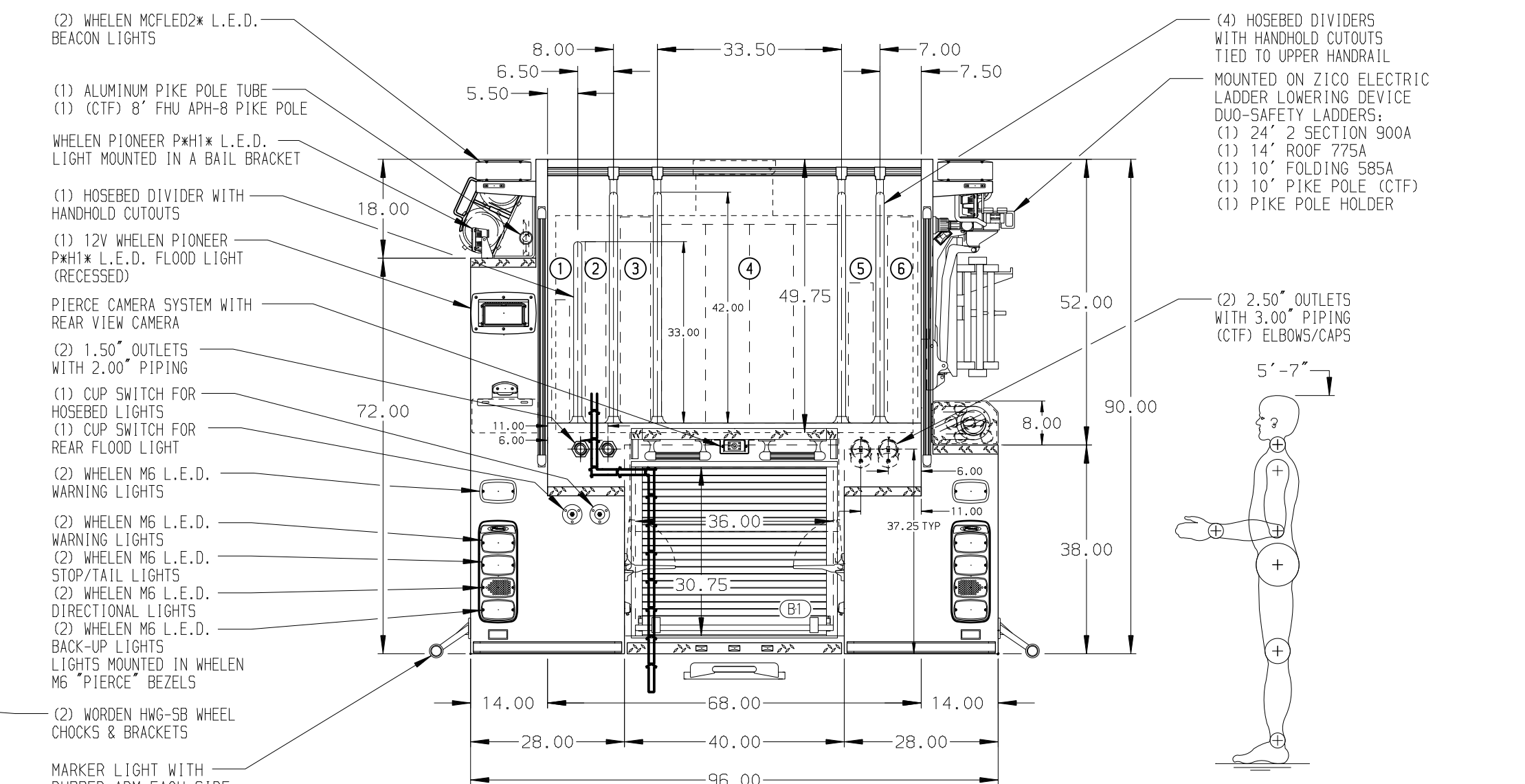
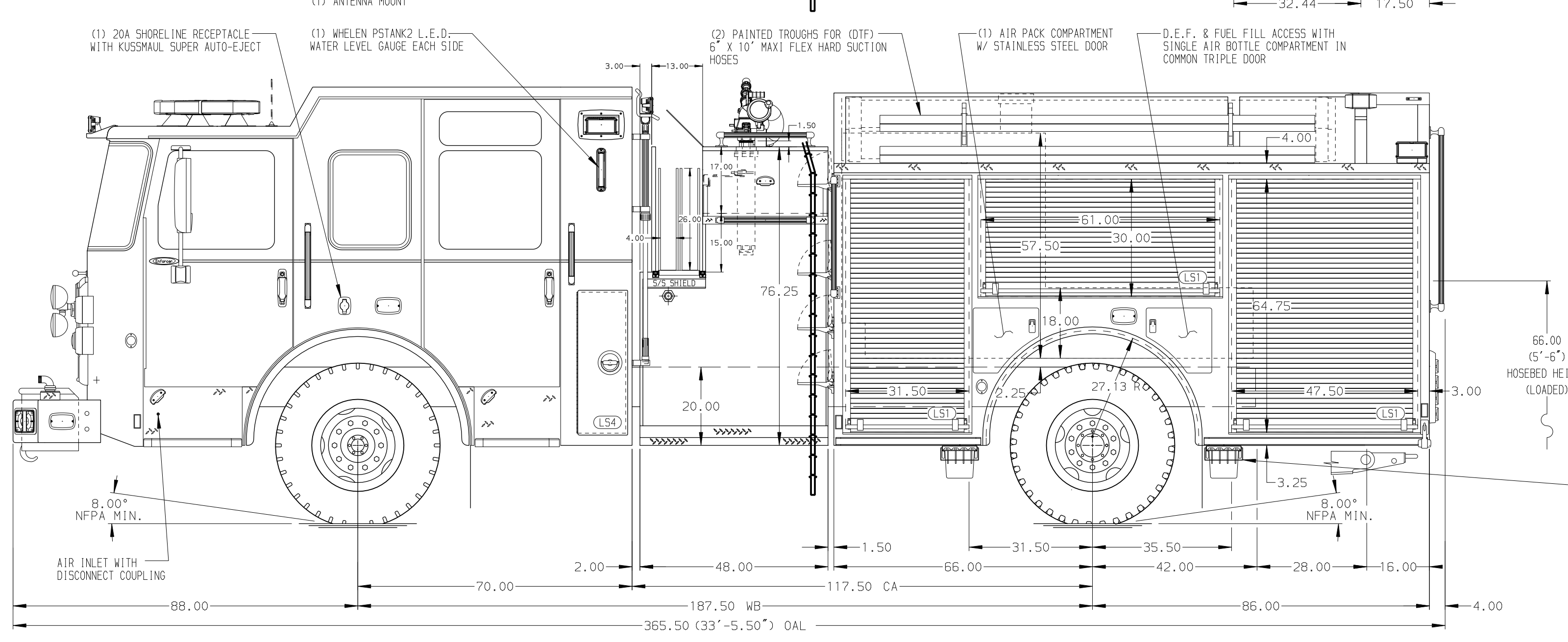


- HOSEBED CAPACITIES**
- ① 200' OF 1.75" D.J. HOSE
 - ② 300' OF 2.00" D.J. HOSE
 - ③ 300' OF 3.00" D.J. HOSE
 - ④ 1200' OF 5.00" D.J. HOSE
 - ⑤ 200' OF 2.50" D.J. HOSE
 - ⑥ 300' OF 3.00" D.J. HOSE



ALUMINUM BODY

SIDE ROLL AND FRONTAL IMPACT PROTECTION

NOTE
DIMENSIONS SHOWN ARE APPROXIMATE AND ARE SUBJECT TO MINOR DEVIATIONS AS MAY OCCUR OR BE NECESSARY IN CONSTRUCTION. MINOR DETAILS NOT SHOWN.

- 1. BATTERY CHARGER & AIR COMPRESSOR INSTALLED BEHIND DRIVER & OFFICER SEATS
- 2. BATTERY CHARGER INDICATOR LOCATED ON DRIVER'S SEAT RISER
- 3. AMOR LUMBAR H20 L.E.D. LIGHTING STRIPS IN CARGO AREAS
- 4. FIVE FULL WIDTH/DEPTH ADJUSTABLE SHELVES LOCATED PER SHOP ORDER
- 5. ONE SLIDE-OUT ADJUSTABLE TRAY LOCATED PER SHOP ORDER
- 6. ONE SWING-OUT TOOLBOARD LOCATED PER SHOP ORDER
- 7. 12" x 12" NOTCH CUTOUT AT THE TOP FRONT OF EACH HOSEBED DIVIDER
- 8. FOUR 15/20A 120V DUPLEX 4-PLACE RECEPTACLES IN CAB

CUSTOMER APPROVAL

APPROVED BY:	
DATE:	
CHASSIS DATA	TITLE
MAKE	FOR
PIERCE	DWG NO.
MODEL	
ENFORCER	



1500-D-750P, 152" FH FDLER DS / LOW FDLER PS
(2) CROSSSLAYS, DELUGE, Z1CO LADDER RACK
WEST MANCHESTER TOWNSHIP
YORK, PENNSYLVANIA
37859AD

JOB NO.	37859
SCALE	DATE
1:24	
DRAWN BY	09NOV22
JWO	
CHECKED BY	11NOV22
CDU	
SHEET SIZE	SHEET NO.
D	1 OF 1