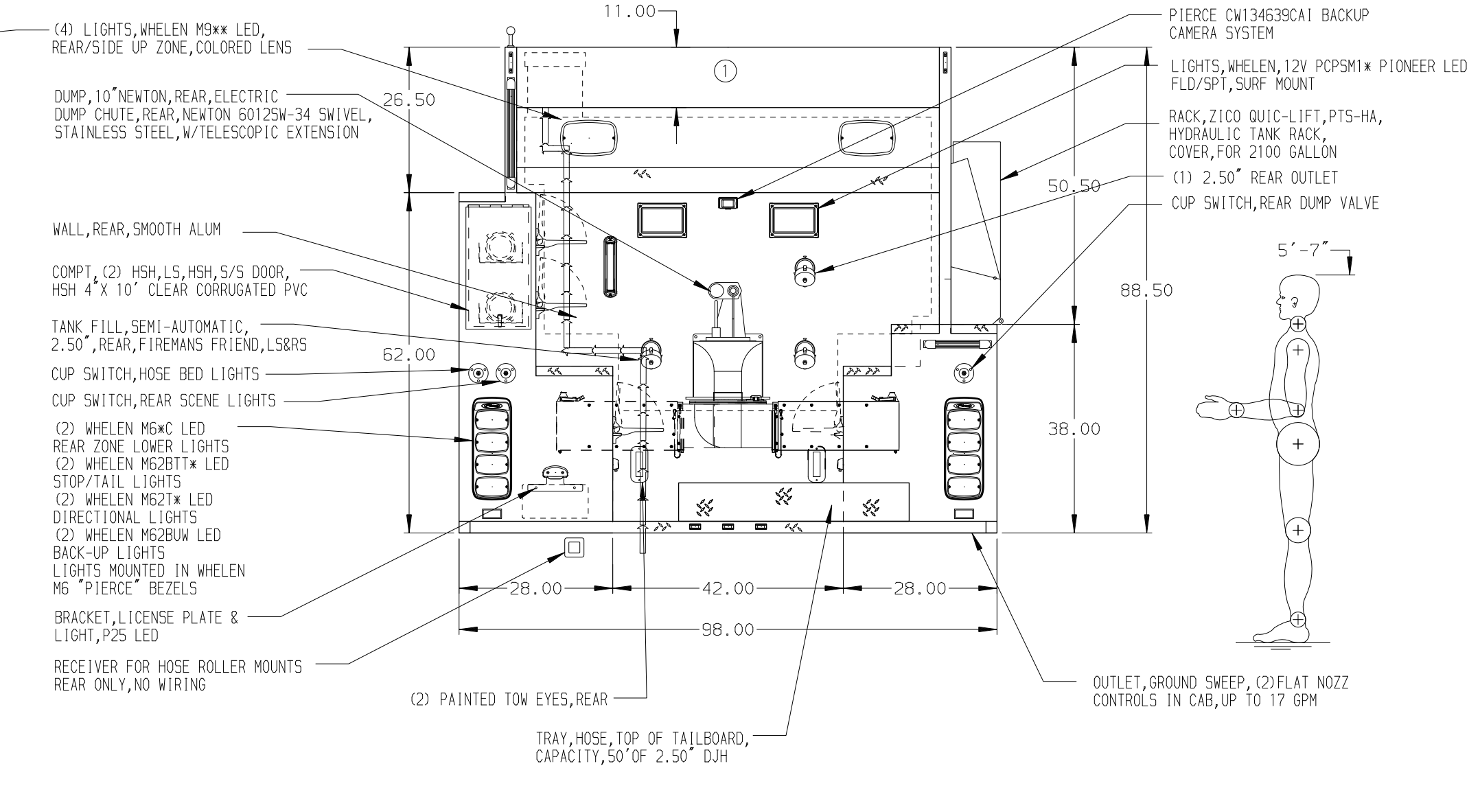
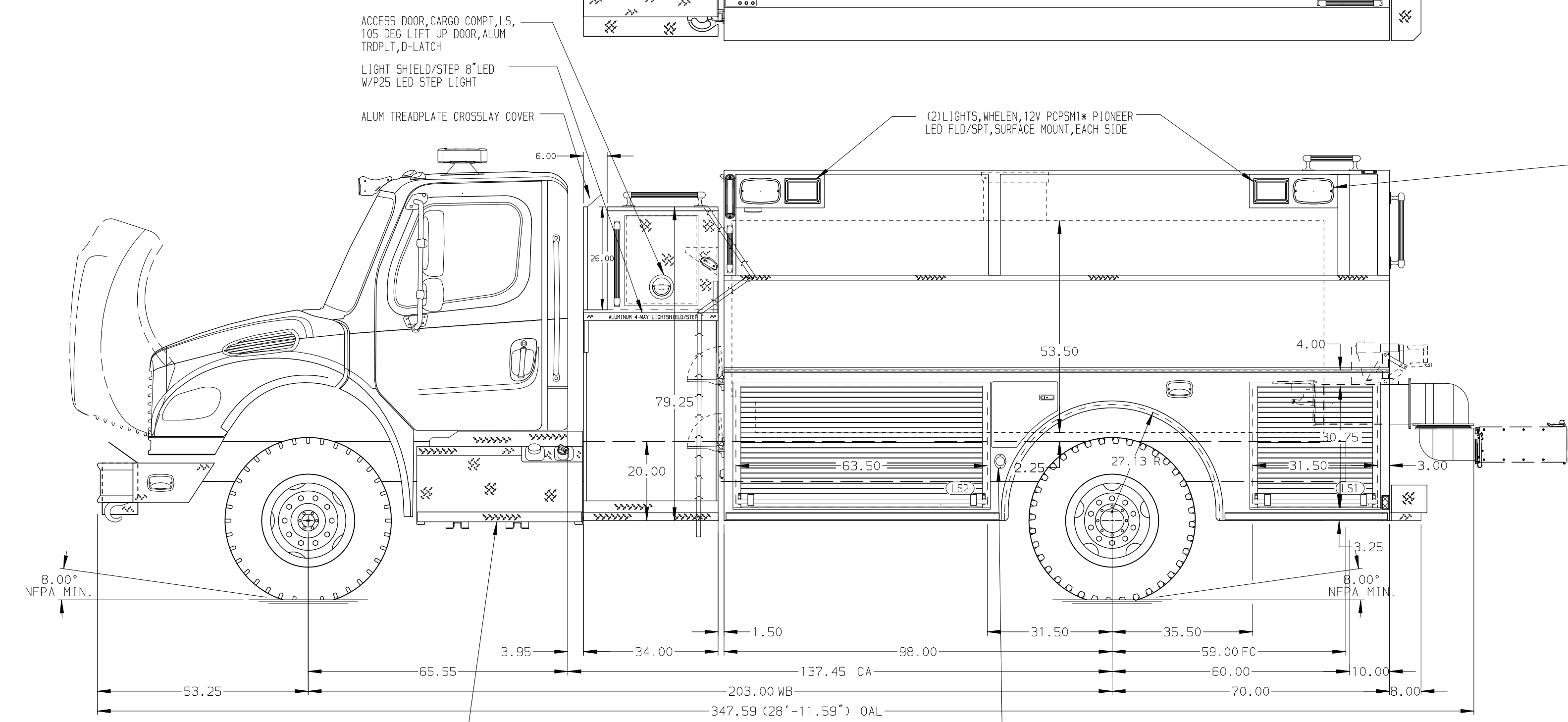


HOSEBED CAPACITIES  
 ① 200' OF 2.50" D.J. POLYESTER HOSE



ALUMINUM BODY

NOTE  
 DIMENSIONS SHOWN ARE APPROXIMATE AND ARE SUBJECT TO MINOR DEVIATIONS AS MAY OCCUR OR BE NECESSARY IN CONSTRUCTION. MINOR DETAILS NOT SHOWN.

**Pierce** MANUFACTURING INC.  
 BRADENTON, FLORIDA

JOB NO. 37869  
 SCALE 1:24  
 DATE

|              |         |                                                        |            |     |           |
|--------------|---------|--------------------------------------------------------|------------|-----|-----------|
| CHASSIS DATA | TITLE   | 500-D-2000 POLY, 168" DRYSIDE (TENDER)                 | DRAWN BY   | JLA | 01DEC22   |
| MAKE         | FOR     | 34" SIDE CONTROL, (1) 1.5" CROSSLAYS, SPECIAL CAPACITY | CHECKED BY | AJA | 02DEC22   |
| FL           |         | CONTRA COSTA COUNTY FIRE PROTECTION DISTRICT           | SHEET SIZE |     | SHEET NO. |
| MODEL        | DWG NO. | 37869AD                                                |            |     | 1 OF 1    |
| REV          | DATE    | BY                                                     | CH         |     |           |