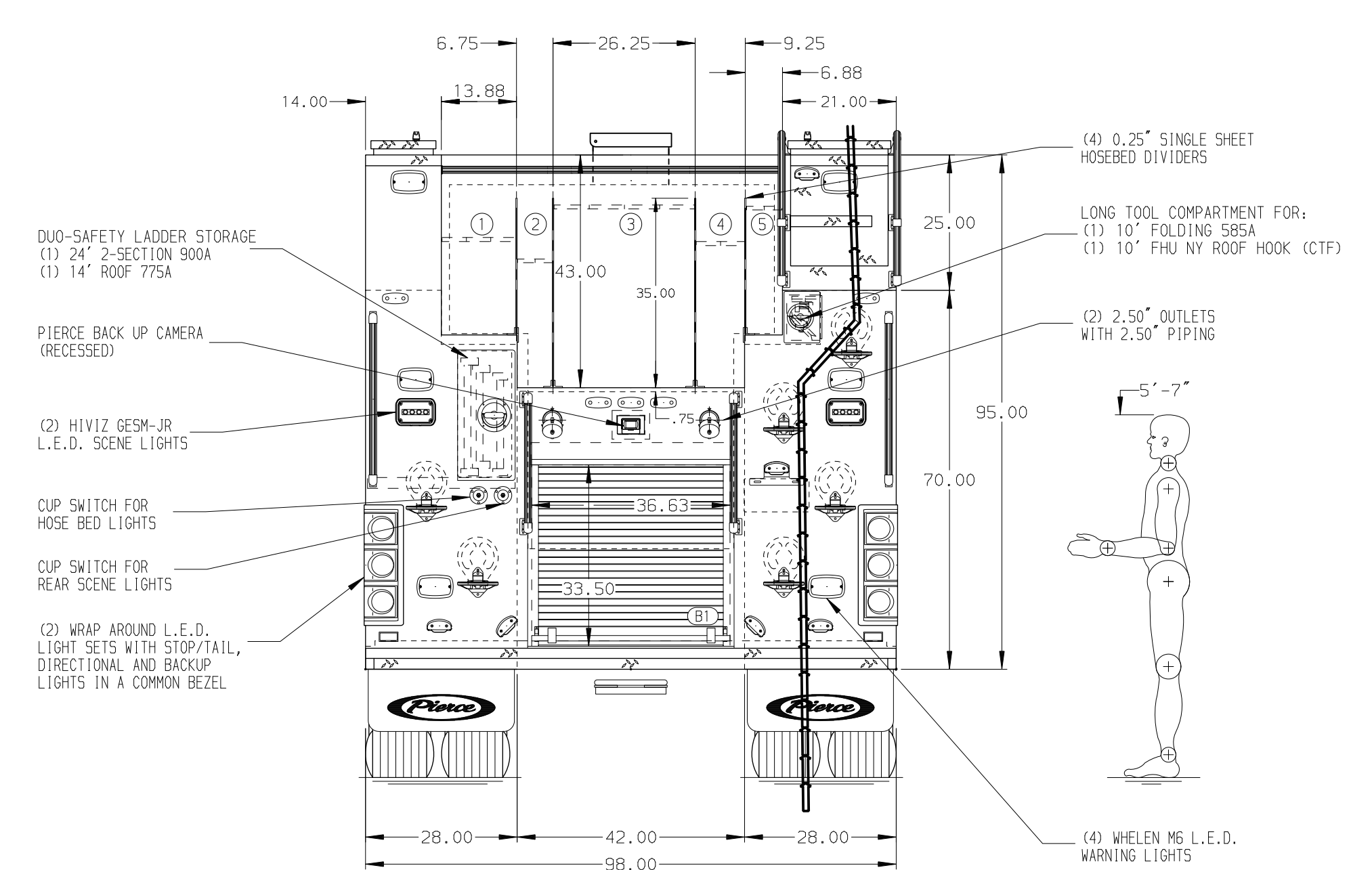
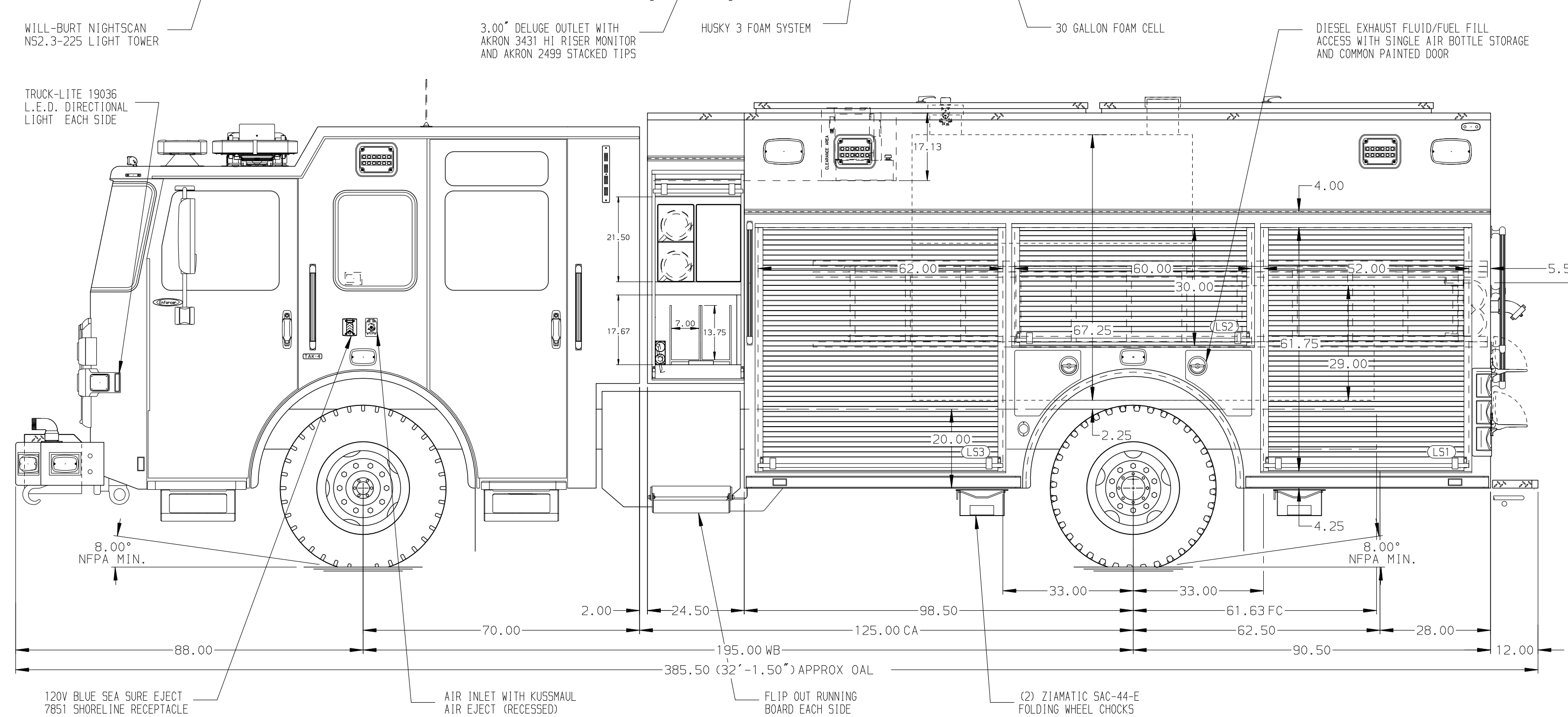


- HOSEBED CAPACITIES
- ① - 400' OF 2.50" D.J. POLY HOSE
 - ② - 400' OF 1.75" D.J. POLY HOSE
 - ③ - 1000' OF 4.00" D.J. POLY HOSE
 - ④ - 400' OF 2.50" D.J. POLY HOSE
 - ⑤ - 400' OF 1.75" D.J. POLY HOSE



ALUMINUM BODY

SIDE ROLL AND FRONTAL IMPACT PROTECTION

NOTE
DIMENSIONS SHOWN ARE APPROXIMATE AND ARE SUBJECT TO MINOR DEVIATIONS AS MAY OCCUR OR BE NECESSARY IN CONSTRUCTION. MINOR DETAILS NOT SHOWN.

- BATTERY CHARGER LOCATED PER SHOP ORDER
- BATTERY CHARGER INDICATOR BEHIND DRIVER'S SEAT DISPLAYED THROUGH WINDOW
- DUAL L.E.D. LIGHT STRIPS LOCATED IN HOSE BED
- PULL STRIPS ON DOORS LOCATED PER SHOP ORDER
- BLUE SEA BATTERY CHARGER BAR GRAPH DISPLAY LOCATED PER SHOP ORDER
- ONE SWING-OUT ALUMINUM TOOL BOARD LOCATED PER SHOP ORDER
- XANTREX INVERTER LOCATED PER SHOP ORDER
- FIVE 120V 6-PLACE RECEPTACLE STRIPS LOCATED PER SHOP ORDER
- AIR OUTLET WITH SHUT OFF VALVE LOCATED PER SHOP ORDER

REV	DATE	BY	CH	ENFORCER
11SEP23	JJB	JGO		MAKE
22JUN23	JJB	JGO		PIERCE
10APR23	JJB	CDU		MODEL

		JOB NO.	37884
		SCALE	DATE
TITLE	1500-D-1030P, 1000G WATER, 30G FOAM, 189" PUC RESCUE LADDERS THRU LS BODY, (2) XLYS, DELUGE, LIGHT TOWER	DRAWN BY	JJB
FOR	RICHFIELD FIRE DEPARTMENT RICHFIELD, OHIO	CHECKED BY	CDU
DWG NO.	37884AD	SHEET SIZE	SHEET NO.
		D	1 OF 1